

NEW MEXICO OIL CONSERVATION COMMISSION
WELL LOCATION AND ACREAGE DEDICATION PLAT

Form C-102
Supersedes C-128
Effective 1-1-65

All distances must be from the outer boundaries of the Section

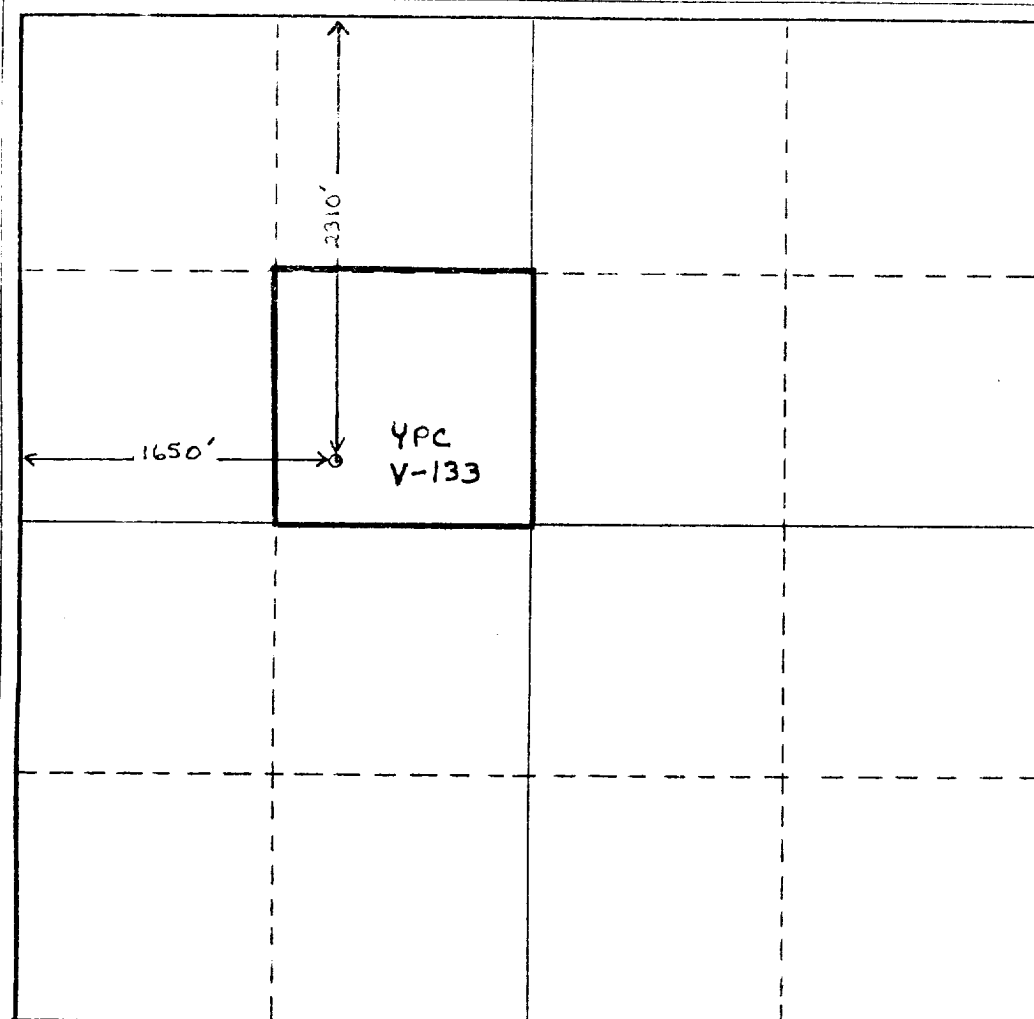
Operator YATES PETROLEUM CORPORATION			Lease Faircloth "VD" State		Well No. 1
Unit Letter F	Section 7	Township 8 South	Range 27 East	County Chaves	
Actual Footage Location of Well: 2310 feet from the North line and 1650 feet from the West line Ground Level Elev. 4027.1' Producing Formation San Andres Pool Wildcat Dedicated Acreage: 40 Acres					

1. Outline the acreage dedicated to the subject well by colored pencil or hachure marks on the plat below.
2. If more than one lease is dedicated to the well, outline each and identify the ownership thereof (both as to working interest and royalty).
3. If more than one lease of different ownership is dedicated to the well, have the interests of all owners been consolidated by communitization, unitization, force-pooling, etc?

☐ Yes ☐ No If answer is "yes," type of consolidation _____

If answer is "no," list the owners and tract descriptions which have actually been consolidated. (Use reverse side of this form if necessary.) _____

No allowable will be assigned to the well until all interests have been consolidated (by communitization, unitization, forced-pooling, or otherwise) or until a non-standard unit, eliminating such interests, has been approved by the Commission.



CERTIFICATION

I hereby certify that the information contained herein is true and complete to the best of my knowledge and belief.

Name

Gliserio Rodriguez

Position

Regulatory Manager

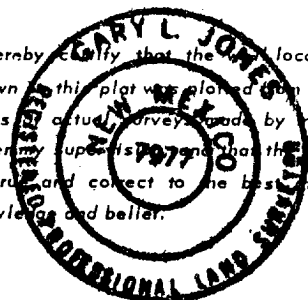
Company

Yates Petroleum Corp.

Date

9/2/82

I hereby certify that the location shown in this plat was plotted from field notes of a survey made by me or under my supervision and that the same is true and correct to the best of my knowledge and belief.



Date Surveyed

August 31, 1982

Registered Professional Engineer
and/or Land Surveyor

Certificate No.

7977

