

NO. OF COPIES RECEIVED	
DISTRIBUTION	
SANTA FE FILE	✓
U.S.M.S.	✓
LAND OFFICE	
OPERATOR	

RECEIVED

SEP 2 1982

O. C. D.
ARTESIA, OFFICE

APPLICATION FOR PERMIT TO DRILL, DEEPEN, OR PLUG BACK

Type of Work

Type of Well: DRILL ☒ DEEPEN ☐ PLUG BACK ☐
 IL WELL ☐ GAS WELL ☒ OTHER ☐ SINGLE ZONE ☐ MULTIPLE ZONE ☐

Yates Petroleum Corporation ✓

Address of Operator

207 E. 4th, Artesia, New Mexico 88210

Location of Well

UNIT LETTER B LOCATED 660 FEET FROM THE North LINE

1980

East LINE OF WELL 36 TWP. 10S RGE. 25E

5A. Indicate Type of Lease
STATE ☒ REC ☐

5. State Oil & Gas Lease No.
LG-681

7. Unit Agreement Lease

8. Form or Lease Name
Comanche Hill VE St.

9. Well No.
1

10. Field and Pool, or Wildcat
Wildcat - *pl. 10*

11. County
Chaves

Proposed Depth 5731.3' GL	Formation Blanket	Formation Abo	Rotary or C.T. Rotary
Drilling Contractor LaRue Drilling	Approx. Date Work will start ASAP		

PROPOSED CASING AND CEMENT PROGRAM

SIZE OF CASING	LENGTH OF CASING	WEIGHT PER FOOT	SETTING DEPTH	SACKS OF CEMENT	EST. TOP
14 3/4"	10 3/4"	40.5# J-55	1000'	800 sk	circulated
7 7/8"	4 1/2"	9.5#	TD	350 sk	

We propose to drill and test the Abo and intermediate formations. Approximately 1000' of surface casing will be set and cement circulated to shut off gravel and caving. If needed (lost circulation) 8 5/8" intermediate casing will be run to 1500' and cemented with enough cement calculated to tie back into the surface casing. If commercial, production casing will be run and cemented with adequate cover, perforated and stimulated as needed for production.

MUD PROGRAM: FW gel and LCM to 1000', Brine to 3200', salt gel/starch to TD.

BOP PROGRAM: BOP's will be installed at the offset and tested daily.

GAS NOT DEDICATED.

*Postecl JDI
API + NY
Book*

APPROVAL VALID FOR 170 DAYS
PERMIT EXPIRES 3-7-83
UNLESS DRILLING UNDERWAY

NOTE: SPACE DESCRIBE PROPOSED PROGRAM: IF PROPOSAL IS TO DEEPEN OR PLUG BACK, GIVE DATA ON PRESENT PRODUCTIVE ZONE AND PROPOSED NEW PRODUCTIVE ZONE. GIVE BLENDING PREVENTER PROGRAM, IF ANY.

I hereby certify that the information above is true and complete to the best of my knowledge and belief.

[Signature] Title Regulatory Manager Date 9/1/82
(This space for State Use)

APPROVED BY *[Signature]* TITLE OIL AND GAS INSPECTOR DATE SEP 7 1982
CONDITIONS OF APPROVAL, IF ANY:

Notify N.M.O.C.C. in sufficient
time to witness cementing
the 8 5/8" casing

NEW MEXICO OIL CONSERVATION COMMISSION
WELL LOCATION AND ACPLAGE DEDICATION PLAT

Form C-102
Supersedes C-128
Effective 1-1-65

All distances must be from the outer boundaries of the Section.

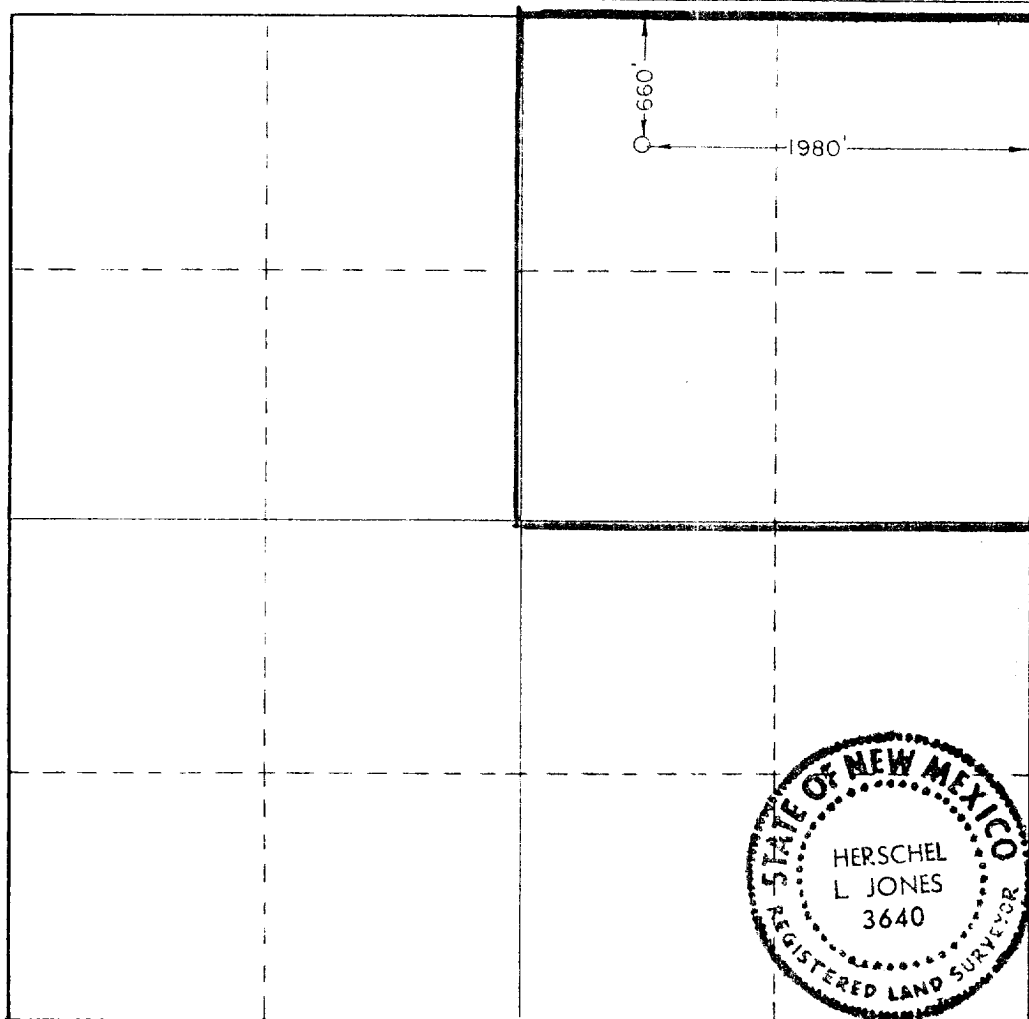
Operator YATES PETROLEUM CORPORATION				Lease Comanche Hill "VF" State		Well No. 1
Section B	Location 36	Township 10 South	Range 25 East	County Chaves		
Actual Horizontal Location of Well:						
660 feet from the North line and		1980 feet from the East line				
Section Level Elev. 3731.2'		Producing Formation Abo		Pool u/k Under Abo		Dedicated Acreage: 160 Acres

- Outline the acreage dedicated to the subject well by colored pencil or hachure marks on the plat below.
- If more than one lease is dedicated to the well, outline each and identify the ownership thereof (both as to working interest and royalty).
- If more than one lease of different ownership is dedicated to the well, have the interests of all owners been consolidated by communitization, unitization, force-pooling, etc?

☐ Yes ☐ No If answer is "yes," type of consolidation _____

If answer is "no," list the owners and tract descriptions which have actually been consolidated. (Use reverse side of this form if necessary.) _____

No allowable will be assigned to the well until all interests have been consolidated (by communitization, unitization, forced-pooling, or otherwise) or until a non-standard unit, eliminating such interests, has been approved by the Commission.



CERTIFICATION

I hereby certify that the information contained herein is true and complete to the best of my knowledge and belief.

Name
Gliserio Rodriguez
Position
Regulatory Manager
Company
Yates Petroleum Corp.

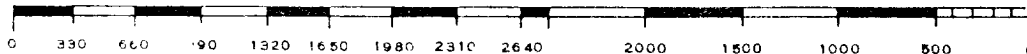
Date
9/1/82

I hereby certify that the well location shown on this plat was plotted from field notes of actual surveys made by me or under my supervision, and that the same is true and correct to the best of my knowledge and belief.

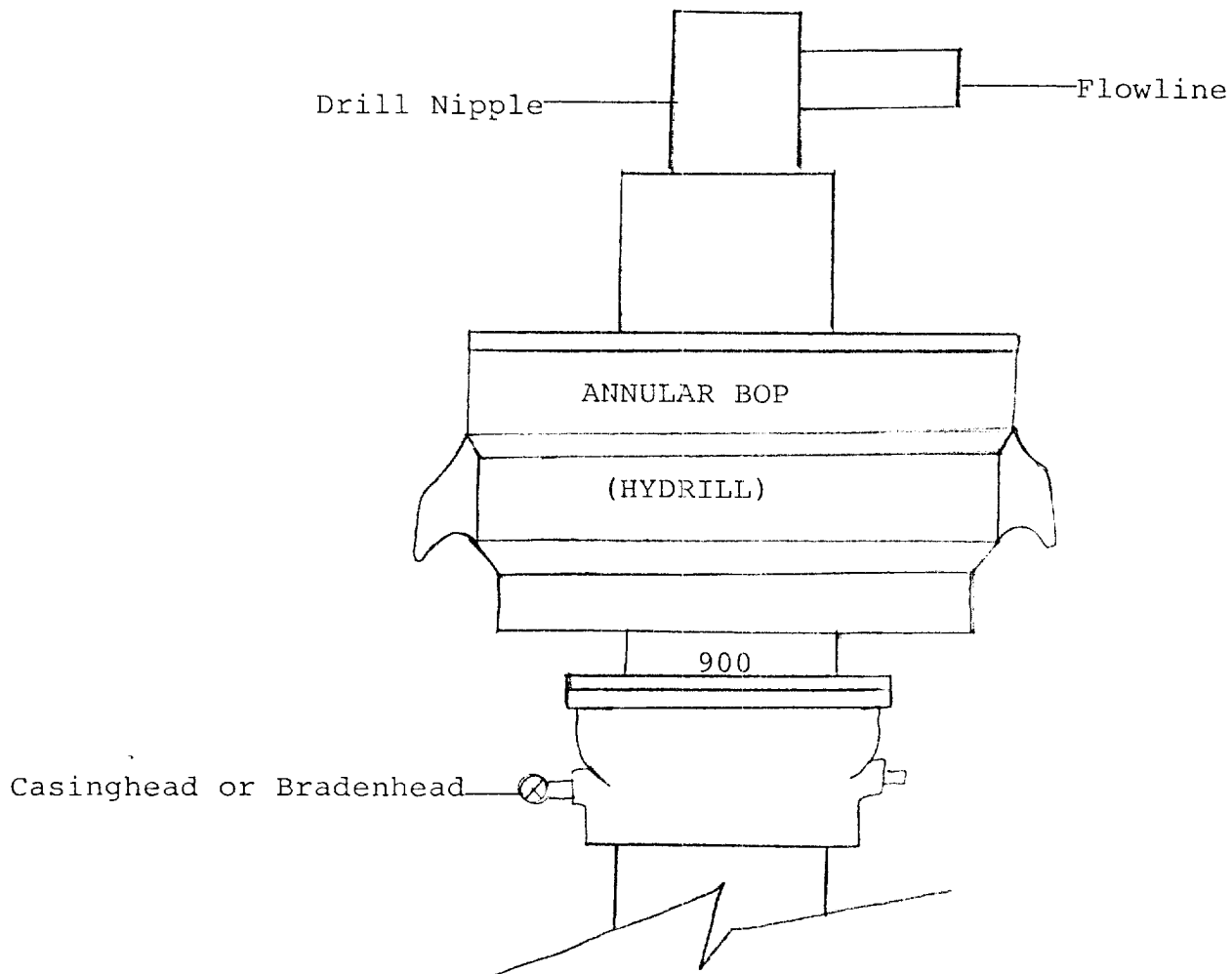
Date Surveyed
August 31, 1982

Registered Professional Engineer and/or Land Surveyor

[Signature]
Certificate No.
3640



- EXHIBIT I



THE FOLLOWING CONSTITUTE MINIMUM BLOWOUT PREVENTER REQUIREMENTS

1. All preventers to be hydraulically operated with secondary manual controls installed prior to drilling out from under casing.
2. All connections from operating manifolds to preventers to be all steel. Hole or tube a minimum of one inch in diameter.
3. The available closing pressure shall be at least 15% in excess of that required with sufficient volume to operate the BOP's.
4. All connections to and from preventer to have a pressure rating equivalent to that of the BOP's.
5. Hole must be kept filled on trips below intermediate casing.