

UNION STATES
DEPARTMENT OF THE INTERIOR
GEOLOGICAL SURVEY(Other instructions on
reverse side)

APPLICATION FOR PERMIT TO DRILL, DEEPEN, OR PLUG BACK

1a. TYPE OF WORK DRILL <input checked="" type="checkbox"/> DEEPEN <input checked="" type="checkbox"/> PLUG BACK <input type="checkbox"/>			5. LEASE DESIGNATION AND SERIAL NO. NM-29406	
b. TYPE OF WELL OIL WELL <input type="checkbox"/> GAS WELL <input checked="" type="checkbox"/> OTHER <input type="checkbox"/>			6. IF INDIAN, ALLOTTEE OR TRIBE NAME	
2. NAME OF OPERATOR MESA PETROLEUM CO. ✓			7. UNIT AGREEMENT NAME	
3. ADDRESS OF OPERATOR P. O. BOX 2009 ONE MESA SQUARE ALBUQUERQUE, NM 87103			8. FARM OR LEASE NAME SCOTT FEDERAL	
4. LOCATION OF WELL (Report location clearly and in accordance with any State requirements.)* At surface 1980' FNL & 1980' FWL SE 1/4 NW 1/4 F At proposed prod. zone Same			9. WELL NO. 1	
14. DISTANCE IN MILES AND DIRECTION FROM NEAREST TOWN OR POST OFFICE* 40 miles North of Roswell, New Mexico			10. FIELD AND POOL, OR WILDCAT WILDCAT ABO	
15. DISTANCE FROM PROPOSED* LOCATION TO NEAREST PROPERTY OR LEASE LINE, FT. (Also to nearest drlg. unit line, if any) 1980'			11. SEC., T., R., M., OR BLK. AND SURVEY OR AREA Sec 14, T4S, R22E	
16. NO. OF ACRES IN LEASE 2560.4			12. COUNTY OR PARISH CHAVES	
17. NO. OF ACRES ASSIGNED TO THIS WELL 160			13. STATE NM	
18. DISTANCE FROM PROPOSED LOCATION* TO NEAREST WELL, DRILLING, COMPLETED, OR APPLIED FOR, ON THIS LEASE, FT. N/A			19. PROPOSED DEPTH 4000	
20. ROTARY OR CABLE TOOLS Rotary			21. APPROX. DATE WORK WILL START* September 15, 1982	
22. ELEVATIONS (Show whether DF, RT, GR, etc.) 4517' GR				

23. PROPOSED CASING AND CEMENTING PROGRAM

SIZE OF HOLE	SIZE OF CASING	WEIGHT PER FOOT	SETTING DEPTH	QUANTITY OF CEMENT
14 3/4"	10 3/4"	40.5#	950'	700/300 SURFACE
9 1/2"	7 5/8"	26.4#	1600'	700/300 TIE BACK
7 7/8"	4 1/2"	10.5#	4000'	COVER ABO

Propose to drill 14 3/4" hole with mud or air to approximately 950' and run 10 3/4" casing. Will cement to surface and test casing with cementing head to 600 psi. Will reduce hole to 9 1/2" and drill on mud or air to approximately 1600' and run 7 5/8" casing if circulation has been lost and cement with sufficient amounts to tie-back to 10 3/4" casing. Will then reduce hole to 6 1/2" or 6 1/4", test BOP's and casing and drill to total depth. If hole conditions are favorable, the 7 5/8" casing will be omitted and the hole will be reduced to 7 7/8" and drilled to total depth. Either 4 1/2" or 5 1/2" casing will be run as production casing depending upon hole size drilled to TD.

Operator's gas sales are dedicated.

XC: MMS (7), TLS, CEN RCDS, ACCTG, MIDLAND: MED, LAND, ROSWELL, REM, FILE (PARTNERS)

IN ABOVE SPACE DESCRIBE PROPOSED PROGRAM: If proposal is to deepen or plug back, give data on present productive zone and proposed new productive zone. If proposal is to drill or deepen directionally, give pertinent data on subsurface locations and measured and true vertical depths. Give blowout preventer program, if any.

24. SIGNED <i>[Signature]</i> APPROVED <i>[Signature]</i>		REGULATORY COORDINATOR		8/26/82	
(This space for Federal or State office use) (Orig. Sgd.) GEORGE H. STEWART		TITLE		DATE	
PERMIT NO. 406311982		APPROVAL DATE			
APPROVED BY JAMES A. GILLHAM DISTRICT SUPERVISOR		TITLE		DATE	

RECEIVED

AUG 27 1982

OIL & GAS
MINERALS MGMT. SERVICE
ROSWELL, NEW MEXICO

*See Instructions On Reverse Side

All distances must be from the outer boundaries of the Section.

Operator Mesa Petroleum Co.			Lease Scott Federal		Well No. #1
Unit Letter F	Section 14	Township 4 South	Range 22 East	County Chaves	
Actual Postage Location of Well:					
1980 feet from the North line and		1980 feet from the West line			
Ground Level Elev. 4517	Producing Formation ABO	Pool WILDCAT		Dedicated Acreage: NW/4 160 Acres	

1. Outline the acreage dedicated to the subject well by colored pencil or hatchure marks on the plat below.
2. If more than one lease is dedicated to the well, outline each and identify the ownership thereof (both as to working interest and royalty).
3. If more than one lease of different ownership is dedicated to the well, have the interests of all owners been consolidated by communitization, unitization, force-pooling, etc?

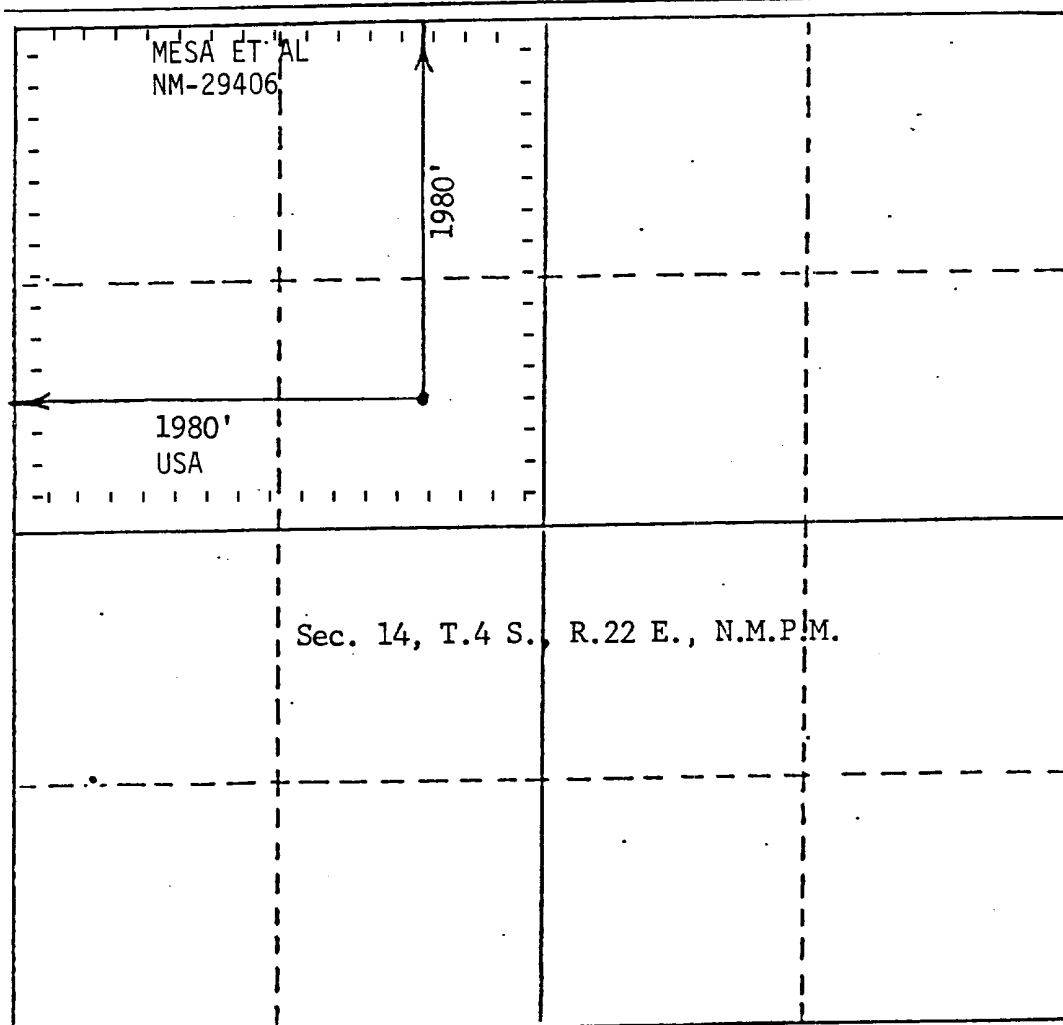
☐ Yes ☐ No If answer is "yes," type of consolidation _____

If answer is "no," list the owners and tract descriptions which have actually been consolidated. (Use reverse side of this form if necessary.) _____

No allowable will be assigned to the well until all interests have been consolidated (by communitization, unitization, forced-pooling, or otherwise) or until a non-standard unit, eliminating such interests, has been approved by the Division.

RECEIVED
AUG 27 1982

OIL & GAS
MINERALS MGMT. SERVICE
ROSWELL, NEW MEXICO



CERTIFICATION

I hereby certify that the information contained herein is true and complete to the best of my knowledge and belief.

Name
Richard E. Mathis

Position
Regulatory Coordinator

Company
Mesa Petroleum Co.

Date
8-26-82

I hereby certify that the well location shown on this plat was plotted from field notes of actual surveys made by me or under my supervision, and that the same is true and correct to the best of my knowledge and belief.

JOHN D. JAQUES
Date Surveyed
August 24, 1982
Registered Professional Engineer
and/or Land Surveyor
John D. Jaques, P.E. & L.S.
Certificate No.
6290

APPLICATION FOR PERMIT TO DRILL

MESA PETROLEUM CO.
SCOTT FEDERAL #1
1980' FSL & 1980' FWL, SEC 14, T4S, R22E
CHAVES COUNTY, NEW MEXICO

LEASE NO. NM-29406

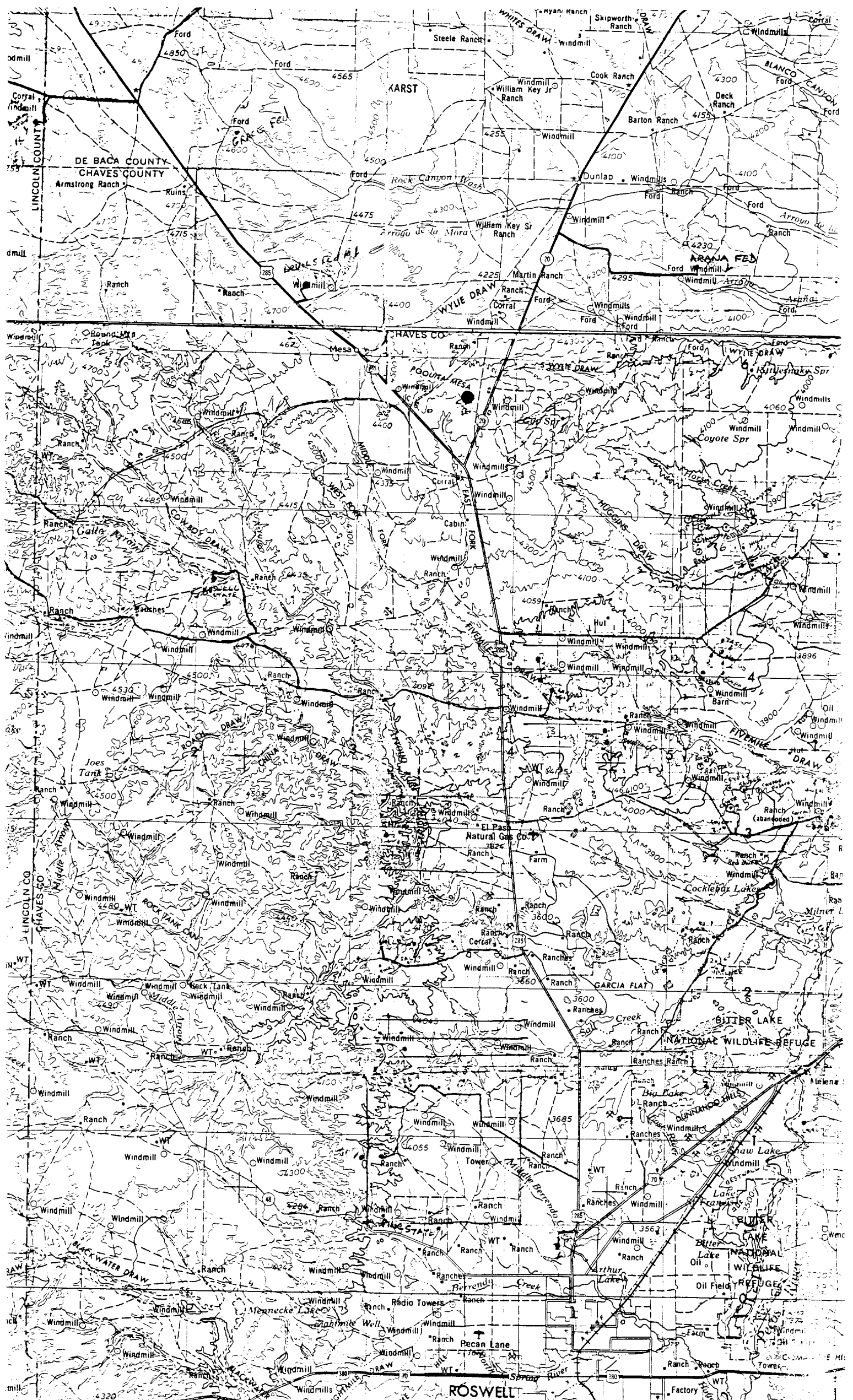
RECEIVED
AUG 27 1982

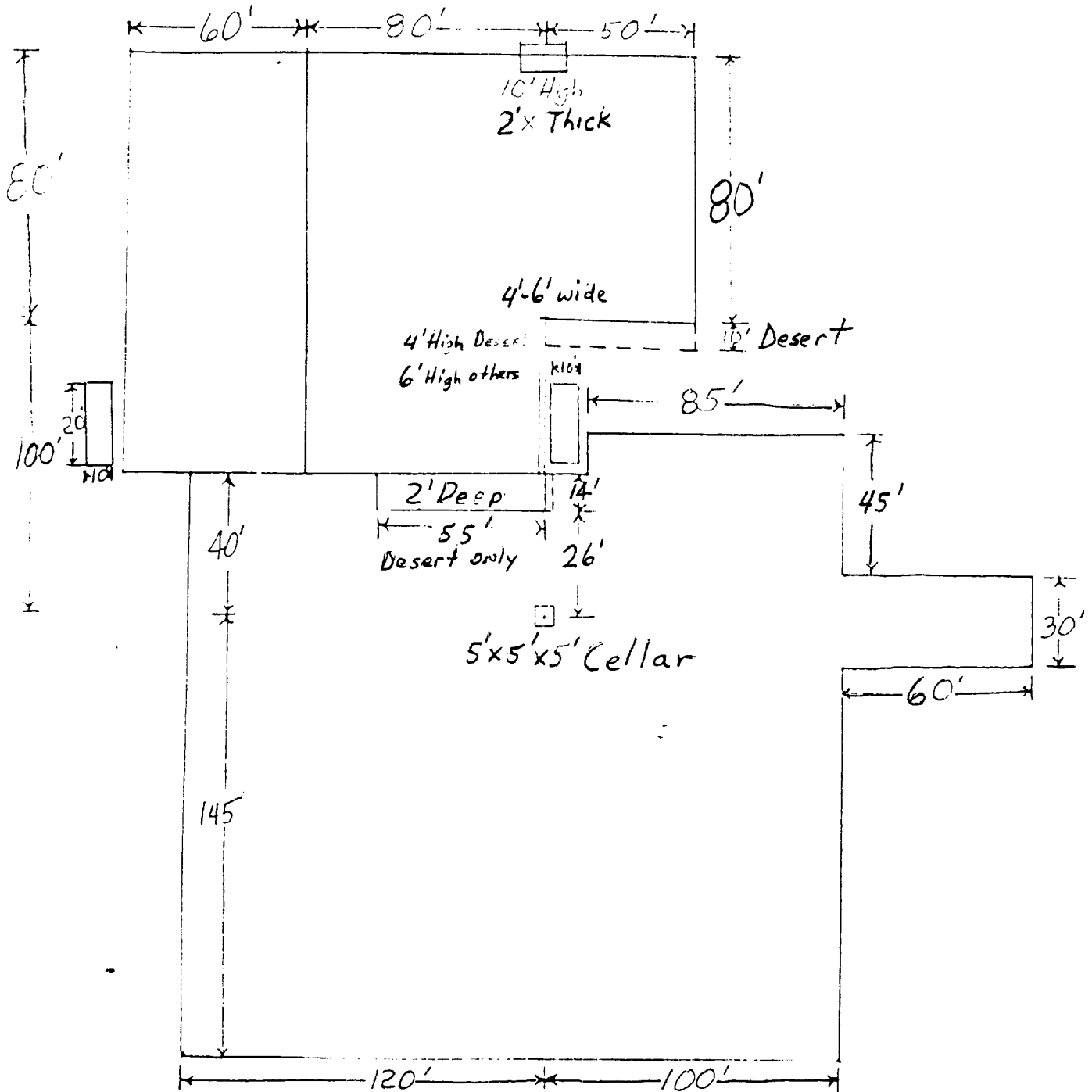
OIL & GAS
MINERALS MGMT. SERVICE
ROSWELL, NEW MEXICO

In conjunction with Form 9331-C, Application For Permit to Drill subject well, the following additional information is provided:

1. Applicable portions of the GENERAL REQUIREMENTS FOR OIL AND GAS OPERATIONS ON FEDERAL LEASES, Roswell District, Geological Survey of September 1, 1980 will be adhered to.
2. Geological markers are estimated as follows:

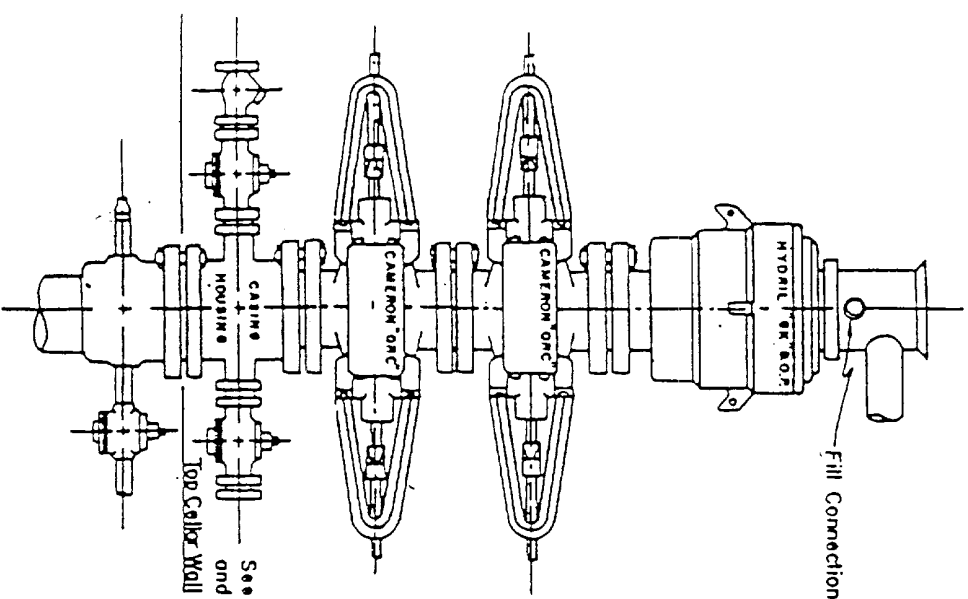
SAN ANDRES	Surface
GLORIETA	924
YESO	1264
TUBB	2686
ABO	3228
3. Hydrocarbon bearing strata may occur in the Abo formation(s). No fresh water is expected to be encountered below 900'.
4. The Casing and Blowout Preventer Program will be determined by hole conditions as encountered. See Exhibit VI. Anticipate drilling with mud, air or foam using ram type preventer and rotating head for well control. The 10 3/4" casing will be set at approximately 900' to protect any fresh water zones and cemented to the surface. The 7 5/8" casing will be set at approximately 1600' if water zones have been encountered or omitted if not and ram type preventers installed. Sufficient amounts and kinds of cement would be used to ensure any water, gas, or oil zones encountered are isolated and shut off down to the casing point if run. The 4 1/2" production casing will be set at total depth or shallower depending upon the depth of the deepest commercial hydrocarbon bearing strata encountered.
5. No drill stem test or coring program is planned. The logging program may consist of a GR-CNL from surface total depth and FDC from casing point to total depth.
6. Anticipated drilling time is ten days with completion operations to follow as soon as a completion unit is available.



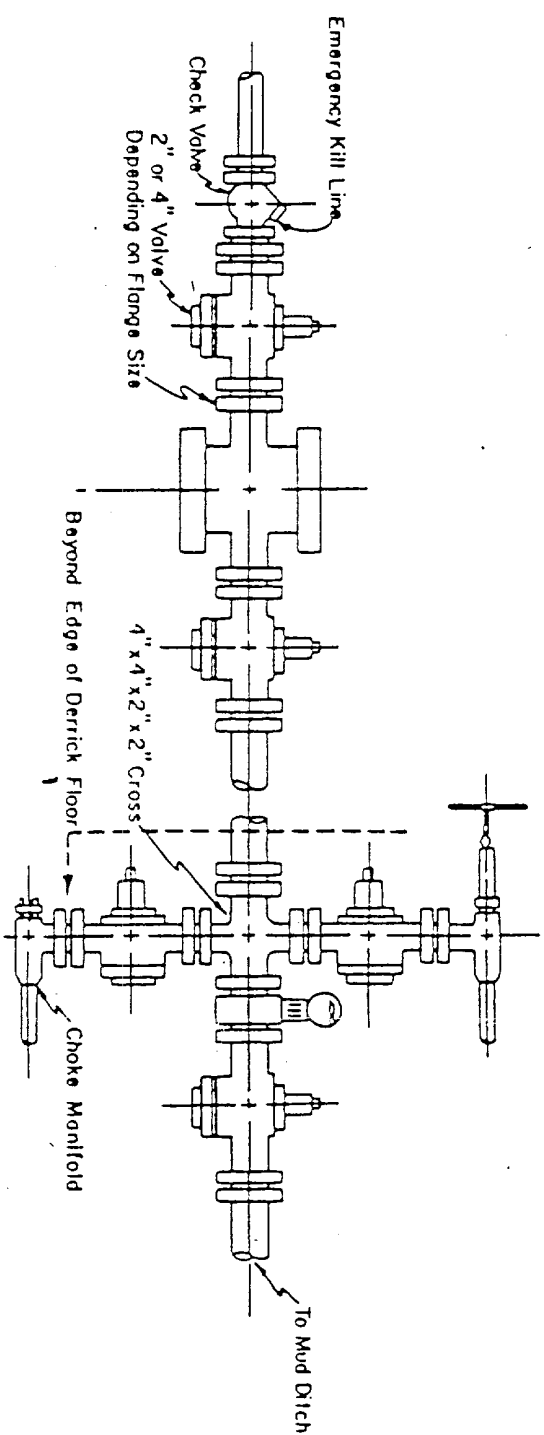


6"-8" Watered & Compacted Caliche
ON PAD & ROAD IF NEEDED

Blow-out Preventers hydril and choke manifold are all 900 Series



3,000 PSI WORKING PRESSURE
BLOW-OUT PREVENTER HOOK-UP



3,000 PSI WORKING PRESSURE KILL, CHOKE, AND FILL CONNECTIONS

DETAIL OF 4" FLOW LINE CHOKE ASSEMBLY

Minimum assembly for 3,000 PSI working pressure will consist of three preventers.
The bottom and middle preventers may be Cameron.

NOTE: HYDRIL not installed on shallow-low pressure wells.
RAM type BOPs are API 10" X 3000 PSI



E X H I B I T

V I