

UNITED STATES DEPARTMENT OF THE INTERIOR
GEOLOGICAL SURVEY

(Other instructions on NM OIL CONSERVATION COMMISSION DD Form 100)

Docket Number No. 42-R1425.
30-005-61761

Artesia, NM 88210

APPLICATION FOR PERMIT TO DRILL, DEEPEN, OR PLUG BACK

1a. TYPE OF WORK

DRILL ☒

DEEPEN ☐

PLUG BACK ☐

b. TYPE OF WELL

OIL WELL ☐

GAS WELL ☒

OTHER ☐

SINGLE ZONE ☒

MULTIPLE ZONE ☐

2. NAME OF OPERATOR

DEPCO, INC.

SEP 7 1982

3. ADDRESS OF OPERATOR

800 Central, Odessa, TX 79761

O. C. D.

4. LOCATION OF WELL (Report location clearly and in accordance with any State requirements.)

At surface

C-1980 FWL & 660 FNL, Section 21, T-5-S, R-25-E

At proposed prod. zone

NE NW
1/4, C

14. DISTANCE IN MILES AND DIRECTION FROM NEAREST TOWN OR POST OFFICE*

43 miles NNE of Roswell, New Mexico

15. DISTANCE FROM PROPOSED*

LOCATION TO NEAREST PROPERTY OR LEASE LINE, FT.
(Also to nearest drlg. unit line, if any)

18. DISTANCE FROM PROPOSED LOCATION*

TO NEAREST WELL, DRILLING, COMPLETED, OR APPLIED FOR, ON THIS LEASE, FT.

16. NO. OF ACRES IN LEASE

19. PROPOSED DEPTH

4220'

17. NO. OF ACRES ASSIGNED TO THIS WELL

160

20. ROTARY OR CABLE TOOLS

Rotary

21. ELEVATIONS (Show whether DF, RT, GR, etc.)

3759 G.R.

23.

PROPOSED CASING AND CEMENTING PROGRAM

SIZE OF HOLE	SIZE OF CASING	WEIGHT PER FOOT	SETTING DEPTH	QUANTITY OF CEMENT
14 3/4"	10 3/4"	40.50#	1000	Circ.
7 7/8"	4 1/2"	10.50#	4220'	675 sx. w/DV collar @ 1780'

Mud Program: See letter from Marrs Mud Company

BOP Program: See Exhibit "D"

Transwestern Pipeline Company will purchase gas

RECEIVED

AUG 18 1982

OIL & GAS
MINERALS MGMT. SERVICE
ROSWELL, NEW MEXICO

IN ABOVE SPACE DESCRIBE PROPOSED PROGRAM: If proposal is to deepen or plug back, give data on present productive zone and proposed new productive zone. If proposal is to drill or deepen directionally, give pertinent data on subsurface locations and measured and true vertical depths. Give blowout preventer program, if any.

24.

SIGNED

R. L. Denney

R. L. Denney

TITLE

Chief Production Clerk

DATE

8-17-82

(This space for Federal or State Office use)

PERMIT NO.

(Orig. Sgd.) GEORGE H. STEWART

APPROVAL DATE

APPROVED BY

CONDITIONS OF APPROVAL, IF ANY:

TITLE

DATE

*See Instructions On Reverse Side

All A

see must be from the outer boundaries of the Section

Operator Depco		Lease Rose Federal Com		Well No. 13 2 12	
Unit Letter C	Section 21	Township 5 South	Range 25 East	County Chaves	
Actual Postage Location of Well: 660 feet from the North line and 1980 feet from the West line					
Ground Level Elev. 3795	Producing Formation Abo	Pool Pecos Slopes Abo		Dedicated Acreage: 160 Acres	

1. Outline the acreage dedicated to the subject well by colored pencil or hatchure marks on the plat below.
2. If more than one lease is dedicated to the well, outline each and identify the ownership thereof (both as to working interest and royalty).
3. If more than one lease of different ownership is dedicated to the well, have the interests of all owners been consolidated by communitization, unitization, force-pooling, etc?

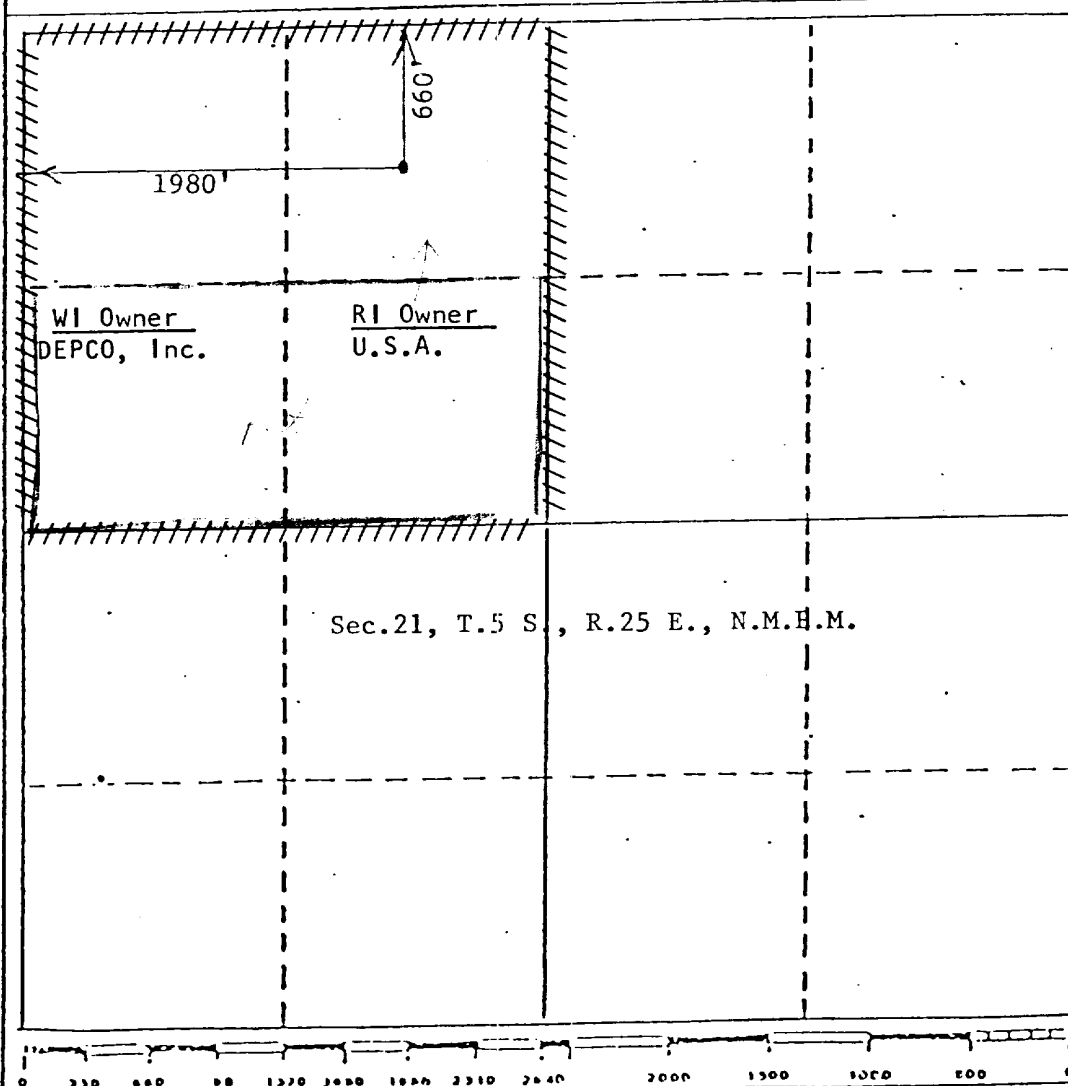
☒ Yes ☐ No If answer is "yes," type of consolidation _____

If answer is "no," list the owners and tract descriptions which have actually been consolidated (reverse side of this form if necessary.) _____

No allowable will be assigned to the well until all interests have been consolidated (by communitization, unitization, forced-pooling, or otherwise) or until a non-standard unit, eliminating such interests, has been approved by the Division.

RECEIVED
AUG 18 1982

OIL & GAS
MINERALS MONITORING SERVICE
SANTA FE, NEW MEXICO



CERTIFICATION

I hereby certify that the information contained herein is true and complete to the best of my knowledge and belief.

R.L. Denney

Name

R.L. Denney

Position

Chief Production Clerk

Company

DEPCO, Inc.

Date

8-17-82

I hereby certify that the well location shown on this plat was plotted from field notes of actual surveys made by me or under my supervision, and that the same is true and correct to the best of my knowledge and belief.

Date Signed

JULY 30 1982

Registered Professional Engineer and/or Land Surveyor

John D. Jaques
John D. Jaques, P.E. & L.S.
Certificate No. 6290

RECEIVED

AUG 18 1982

APPLICATION FOR DRILLING

DEPCO, INC.
No. 3 Rose Federal Com.
CHAVES COUNTY, NEW MEXICO

OIL & GAS
MINERALS MGMT. SERVICE
ROSWELL, NEW MEXICO

In conjunction with Form 9-331C, Application for permit to drill, DEPCO, INC. submits the following items of pertinent information in accordance with USGS requirements.

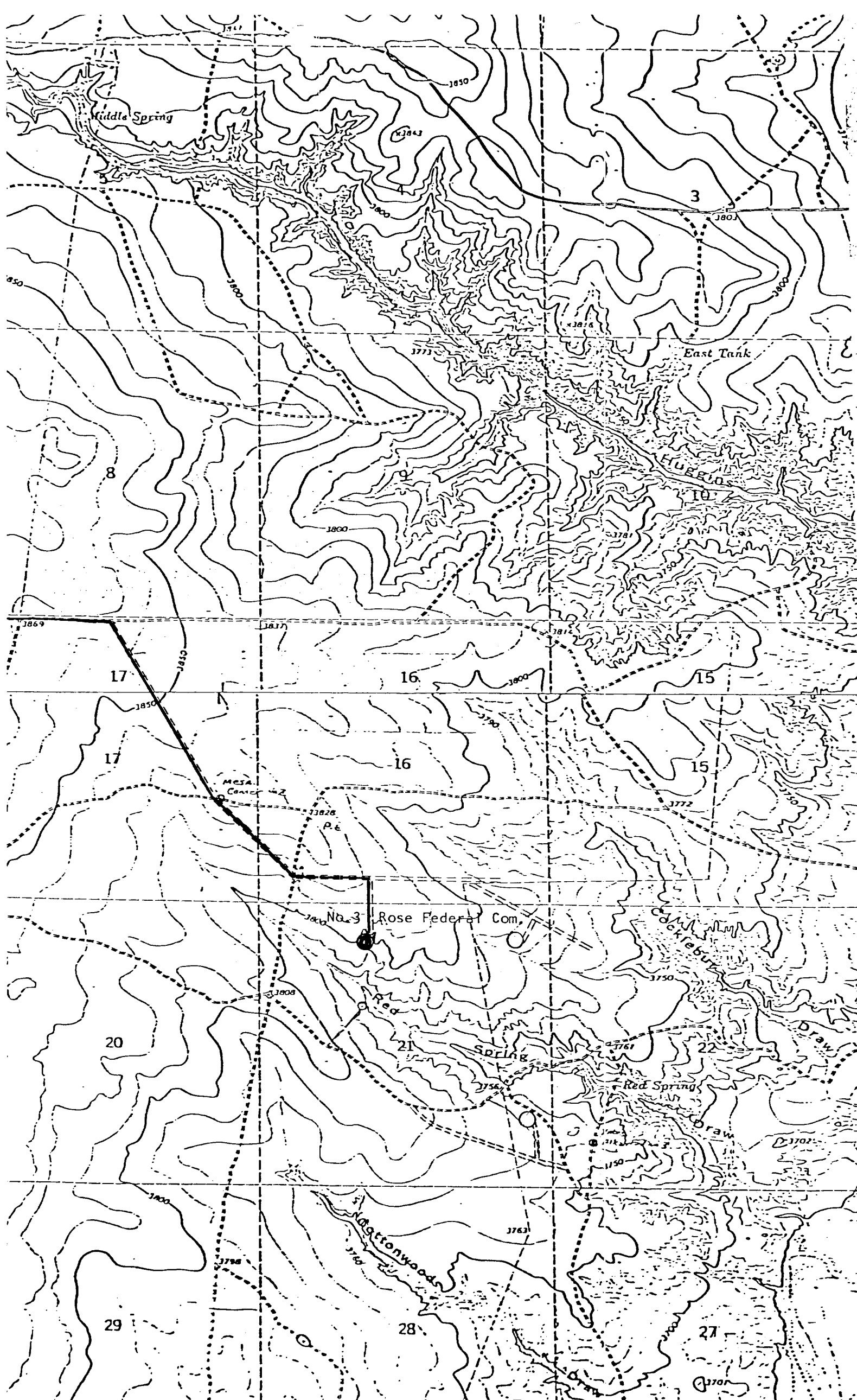
1. The estimated tops of geologic markers are as follows:

San Andres	560'
Glorieta	1580'
Tubb	3050'
Abo	3620'

2. The depths at which anticipated water, oil or gas formations are expected to be encountered:

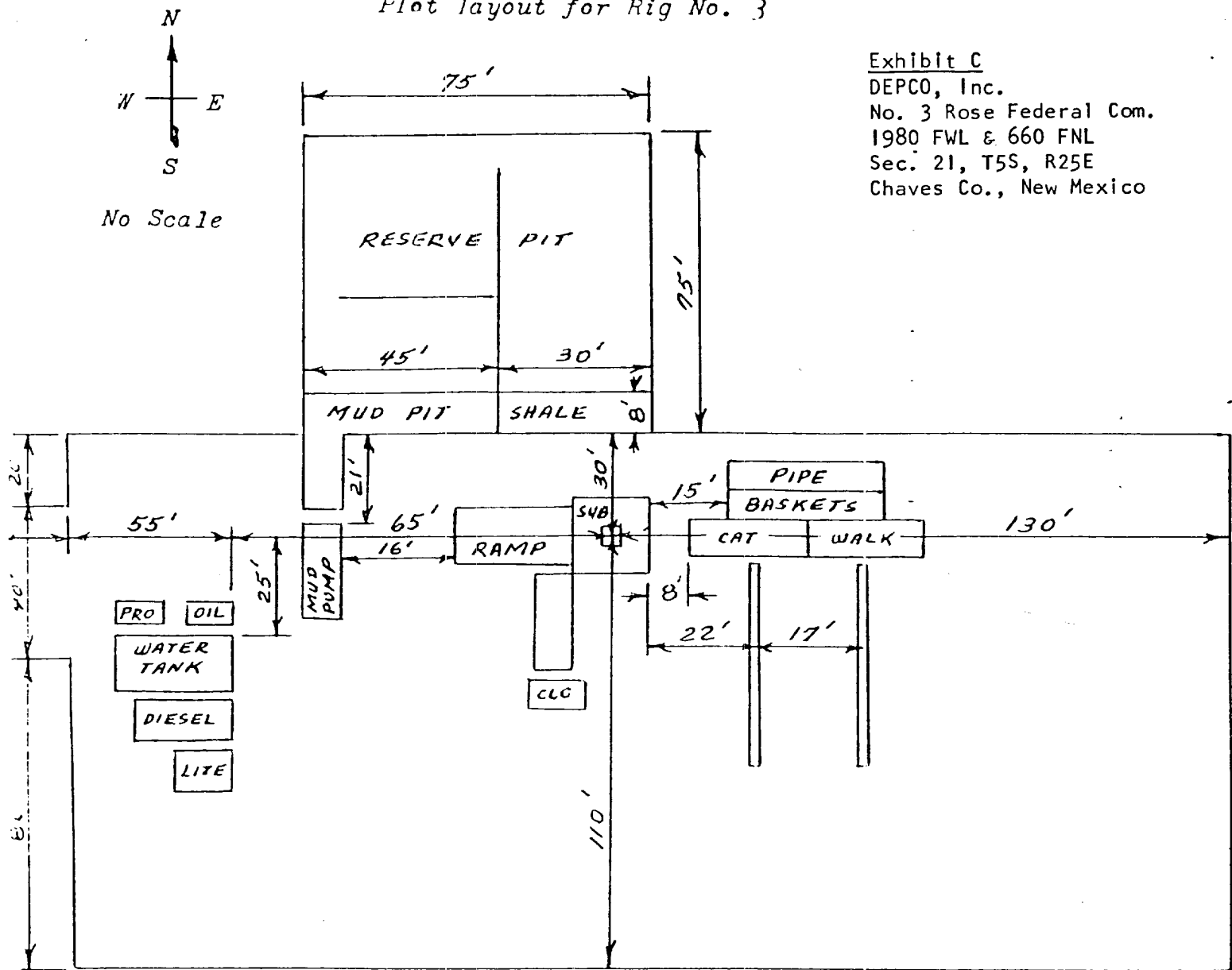
Water:	Approximately 950 feet or less
Gas:	Abo 3620'

3. Proposed casing program: See Form 9-331C.
4. Pressure Control Equipment: See Form 9-331C and Exhibit D.
5. Mud Program: See Form 9-331C and attached letter from Marrs Mud Company.
6. Auxiliary Equipment: Blowout Preventer, Inside Blowout Preventer, Kelley Cock.
7. Testing, Logging and Coring Program:
- | | |
|---|--|
| Drill Stem Test: | Abo |
| 10-foot samples from surface casing to TD | |
| Logging: | Dual Laterolog and Compensated Neutron/Density |
| | With Gamma Ray and Caliper |
8. No abnormal pressures or temperatures are anticipated.
9. Anticipated starting date: As soon as possible.



Plot layout for Rig No. 3

Exhibit C
DEPCO, Inc.
No. 3 Rose Federal Com.
1980 FWL & 660 FNL
Sec. 21, T5S, R25E
Chaves Co., New Mexico



Cellar - 5' x 5' x 5'

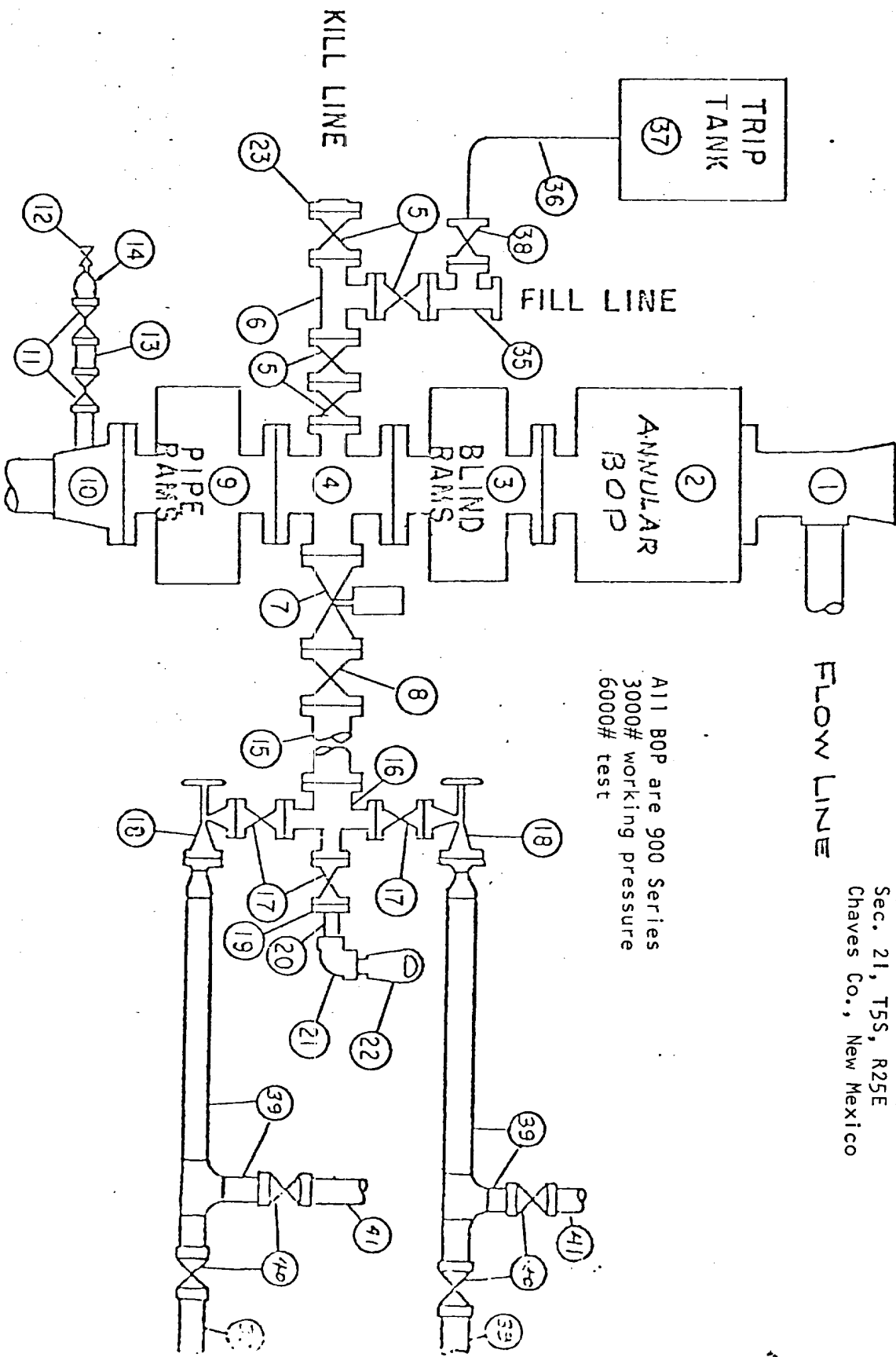
This Rig equipped with Schaffer type "E" 10" series 900 BOP with 4" blind rams, kill line and choke manifold. Koomey hydraulic controls and accumulator with remote controls.

Maintain six (6) foot spacing between oil tank, water tank, diesel tank and light plant.

Twenty (20) foot by Forty(40) foot stinger area at west end of location.

BLOWOUT PREVENTER SPECIFICATION

Exhibit D
DEPCO, Inc.
No. 3 Rose Federal Com.
1980 FWL & 660 FNL
Sec. 21, T5S, R25E
Chaves Co., New Mexico



All BOP are 900 Series
3000# working pressure
6000# test