

P. O. BOX 2088
SANTA FE, NEW MEXICO 87501

SEP 1 1982

O. C. D.
ARTESIA, OFFICE

NO. OF COPIES RECEIVED	
DISTRIBUTION	
SANTA FE	1
FILE	1
U.S.G.S.	1
LAND OFFICE	1
OPERATION	1

APPLICATION FOR PERMIT TO DRILL, DEEPEN, OR PLUG BACK

Type of work

Type of Well DRILL ☒ DEEPEN ☐ PLUG BACK ☐

Oil Well ☐ Gas Well ☒ OTHER ☐ SINGLE ZONE ☐ MULTIPLE ZONE ☐

Name of Operator

Yates Petroleum Corporation

Address of Operator

207 S. 4th, Artesia, New Mexico 88210

Location of well

UNIT LETTER A LOCATED 990 FEET FROM THE North

220 660 FEET FROM THE East LINE OF SEC. 32 TWP. 8 NSE. 23

5A. Indicate Type of Lease
STATE <input checked="" type="checkbox"/> REC <input type="checkbox"/>
5. State Oil & Gas Lease No.
LG-779
7. Unit Agreement Name
8. For or Lease Name
Chaves "UY" State
9. Well No.
1
10. Field and Pool, or Wildcat
Undes. Slope
11. County
Chaves

12. Depth of well	13. Casing	14. Rotary or C.T.
5569.3' GL	Blanket	Rotary
15. Drilling Contractor	16. Approx. Date Work will start	
L&M	ASAP	

PROPOSED CASING AND CEMENT PROGRAM

SIZE OF HOLE	SIZE OF CASING	WEIGHT PER FOOT	SETTING DEPTH	SALES OF CEMENT	EST. TOP
14 3/4"	10 3/4"	40.5# J-55	800'	600 sx	circulated
7 7/8"	4 1/2"	9.5#	TD	350 sx	

We propose to drill and test the Abo and intermediate formations. Approximately 800' of surface casing will be set and cement circulated to shut off gravel and caving. If needed (lost circulation) 8 5/8" intermediate casing will be run to 1500' and cemented with enough cement calculated to tie back into the surface casing. If commercial, production casing will be run and cemented with adequate cover, perforated and stimulated as needed for production.

MUD PROGRAM: FW gel and LCM to 800', KCL and starch to 3500', brine and KCL water to TD.

BOP PROGRAM: BOP's will be installed at the offset and tested daily.

GAS NOT DEDICATED.

APPROVAL VALID FOR 180 DAYS
PERMIT EXPIRES 3-9-83
UNLESS DRILLING UNDERWAY

BOVE SPACE DESCRIBE PROPOSED PROGRAM: IF PROPOSAL IS TO DEEPEN OR PLUG BACK, GIVE DATA ON PRESENT PRODUCTIVE ZONE AND PROPOSED NEW PRODUCTIVE ZONE. GIVE DOWHOLE PREVENTER PROGRAM, IF ANY.

I hereby certify that the information above is true and complete to the best of my knowledge and belief.

By [Signature] Title Regulatory Manager Date 9/1/82

(This space for State Use)

APPROVED BY [Signature] TITLE SUPERVISOR, DISTRICT II

DATE SEP 9 1982

CONDITIONS OF APPROVAL, IF ANY:

Notify N.M.O.C.C. in sufficient time to witness cementing the casing

MEXICO OIL CONSERVATION COMMISSION
WELL LOCATION AND ACREAGE DEDICATION PLAT

Form C-102
Supersedes C-128
Effective 1-1-65

All distances must be from the outer boundaries of the Section.

Operator YATES PETROLEUM CORPORATION		Lease Chaves "UY" State		Well No. 1
Unit Letter A	Section 32	Township 8 South	Range 25 East	County Chaves

Actual Footage Location of Well:

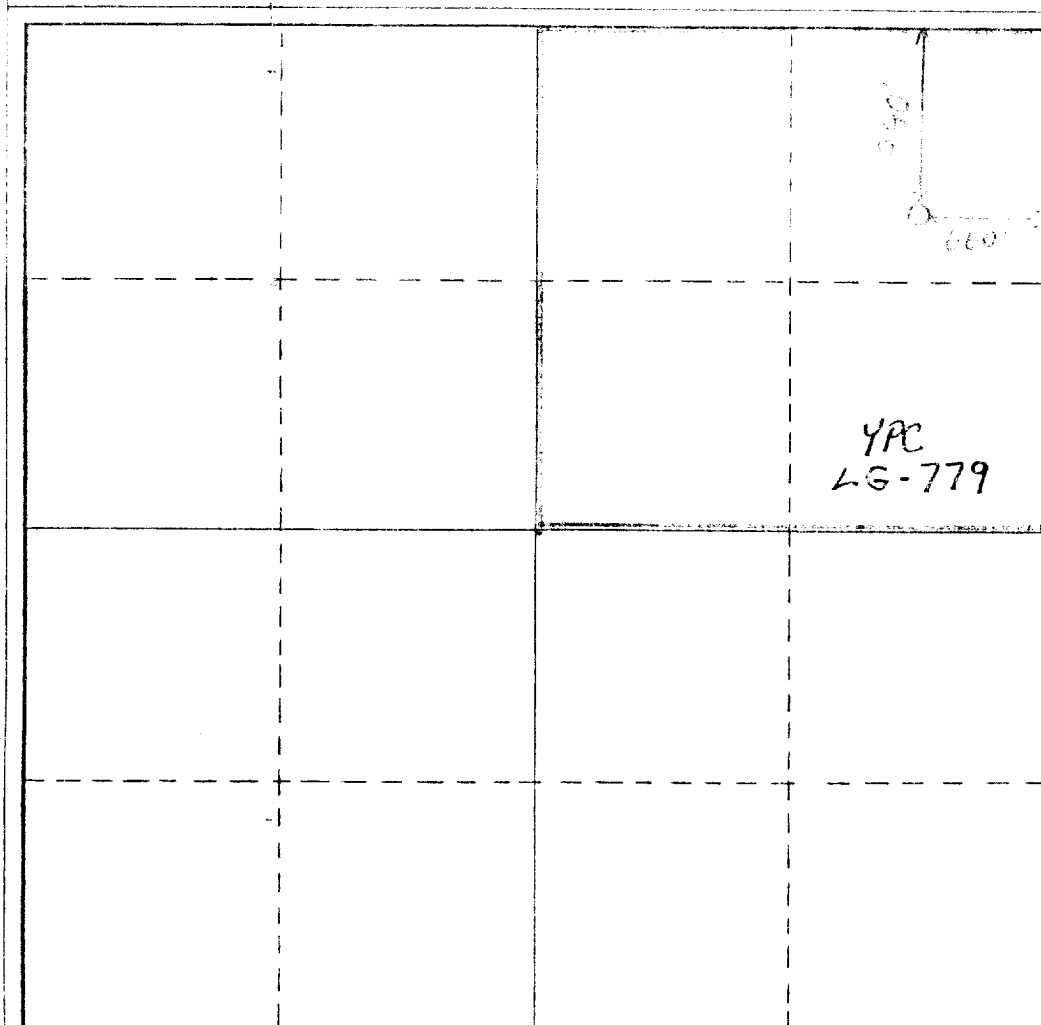
990	feet from the North	line and 660	feet from the East	line
Ground Level Elev. 3569.5' GL	Producing Formation ABO	Post (INDEX REECS Slope ABO)	Dedicated Acreage: 160 Acres	

1. Outline the acreage dedicated to the subject well by colored pencil or hatchure marks on the plat below.
2. If more than one lease is dedicated to the well, outline each and identify the ownership thereof (both as to working interest and royalty).
3. If more than one lease of different ownership is dedicated to the well, have the interests of all owners been consolidated by communitization, unitization, force-pooling, etc?

☐ Yes ☒ No If answer is "yes," type of consolidation _____

If answer is "no," list the owners and tract descriptions which have actually been consolidated. (Use reverse side of this form if necessary.) _____

No allowable will be assigned to the well until all interests have been consolidated (by communitization, unitization, forced-pooling, or otherwise) or until a non-standard unit, eliminating such interests, has been approved by the Commission.



CERTIFICATION

I hereby certify that the information contained herein is true and complete to the best of my knowledge and belief.

Name

Cy Cowan

Position

Regulatory Coordinator

Company

Yates Petroleum Corp.

Date

9/3/82

I hereby certify that the well location shown on this plat is plotted from field notes of actual surveys made by me or under my supervision, and that the same is true and correct to the best of my knowledge and belief.



Date Surveyed

September 2, 1982

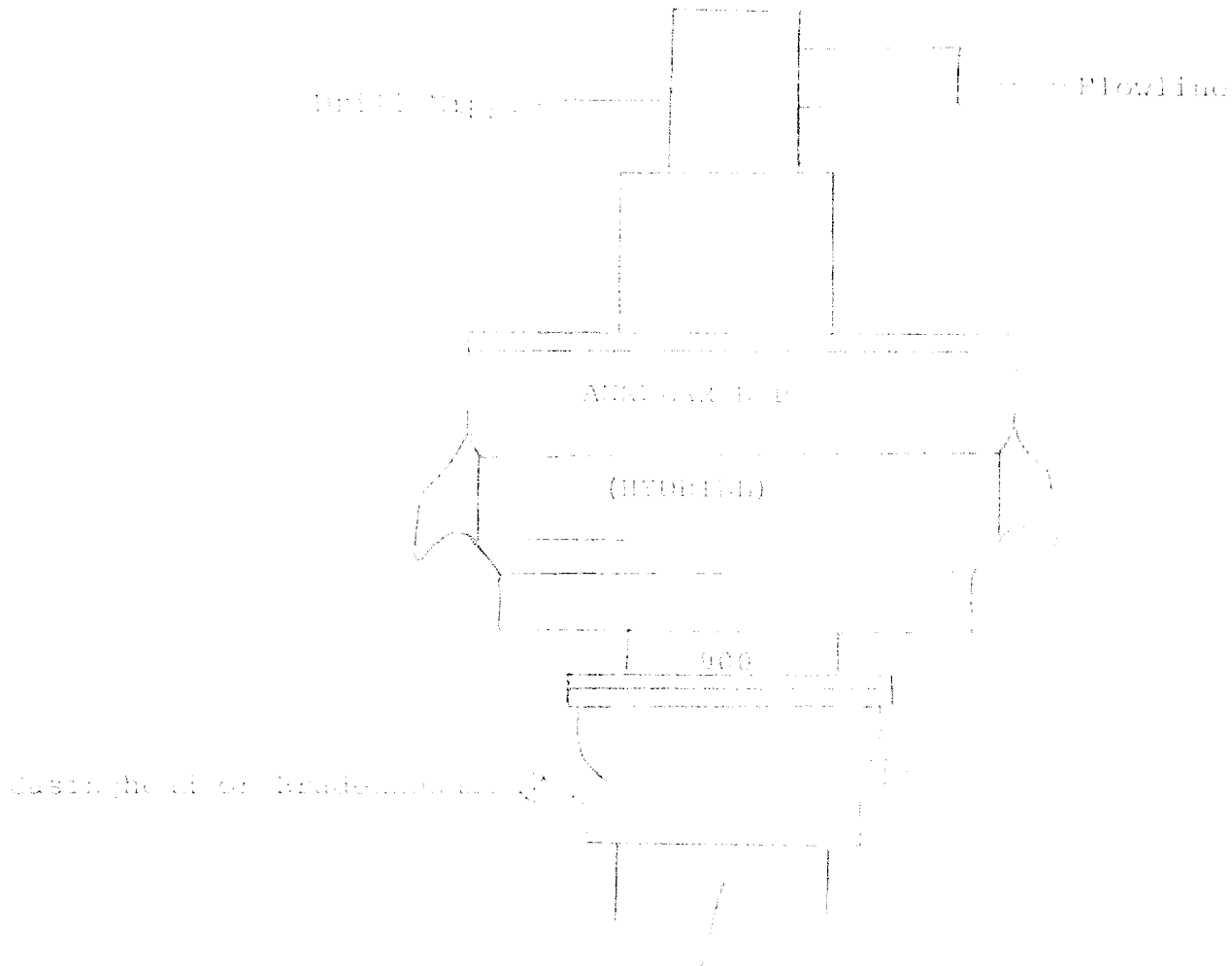
Registered Professional Engineer
and/or Land Surveyor

Certificate No.

7977

0 330 660 990 1320 1650 1980 2310 2640 2000 1500 1000 500 0

-EXHIBIT 5



THE FOLLOWING CONSTITUTE MINIMUM BLOWOUT PREVENTER REQUIREMENTS

1. All preventers to be hydraulically operated with secondary manual controls installed prior to drilling out from under casing.
2. All connections from operating manifolds to preventers to be all steel. Hole or tube a minimum of one inch in diameter.
3. The available closing pressure shall be at least 15% in excess of that required with sufficient volume to operate the BOP's.
4. All connections to and from preventer to have a pressure rating equivalent to that of the BOP's.
5. Hole must be kept filled on trips below intermediate casing.