

SEP 3 1982

O. C. D.
ARTESIA, OFFICEForm C-101
Revised 10-1-78

NO. OF COPIES RECEIVED	
DISTRIBUTION	
SANTA FE	1
FILE	1
U.S.G.S.	2
LAND OFFICE	1
OPERATOR	1

5A. Indicate Type of Lease
STATE <input type="checkbox"/> FEE <input checked="" type="checkbox"/>
5. State Oil & Gas Lease No.
7. Unit Agreement Name
8. Farm or Lease Name
Geraldine "VG" Com
9. Well No.
1
10. Field and Pool, or Wildcat
Unders. Pecos Slope
12. County
Chaves

APPLICATION FOR PERMIT TO DRILL, DEEPEN, OR PLUG BACK

Type of Work

Type of Well DRILL ☒ DEEPEN ☐ PLUG BACK ☐
OIL WELL ☐ GAS WELL ☒ OTHER ☐ SINGLE ZONE ☐ MULTIPLE ZONE ☐

Name of Operator

Yates Petroleum Corporation

Address of Operator

207 S. 4th Street, Artesia, New Mexico 88210

Location of Well

UNIT LETTER EG LOCATED 1980 FEET FROM THE North LINED 1980 FEET FROM THE East LINE OF SEC. 29 TWP. 6S RGE. 26E NMPM

19. Proposed Depth	4145'	19A. Formation	Abo	20. History or C.T.	Rotary
Elevations (Show whether DF, RT, etc.)	3660' GL	21A. Kind & Status Plug. Bond	Blanket	21B. Drilling Contractor	not determined
				22. Approx. Date Work will start	ASAP

PROPOSED CASING AND CEMENT PROGRAM

SIZE OF HOLE	SIZE OF CASING	WEIGHT PER FOOT	SETTING DEPTH	SACKS OF CEMENT	EST. TOP
14 3/4"	10 3/4"	40.5# J-55	950'	775 sx	circulated
7 7/8"	4 1/2"	9.5#	TD	350 sx	

We propose to drill and test the Abo and intermediate formations. Approximately 950' of surface casing will be set and cement circulated to shut off gravel and caving. If needed (lost circulation) 8 5/8" intermediate casing will be run to 1500' and cemented with enough cement calculated to tie back into the surface casing. If commercial, production casing will be run and cemented with adequate cover, perforate, and stimulate as needed for production.

MUD PROGRAM: FW gel and LCM to 950', Brine to 3200', Salt gel/starch to TD.

BOP PROGRAM: BOP's will be installed at the offset and tested daily.

GAS NOT DEDICATED.

APPROVAL VALID FOR 180 DAYS
PERMIT EXPIRES 3-4-83
UNLESS DRILLING UNDERWAY

BELOW SPACE DESCRIBE PROPOSED PROGRAM; IF PROPOSAL IS TO DEEPEN OR PLUG BACK, GIVE DATA ON PRESENT PRODUCTIVE ZONE AND PROPOSED NEW PRODUCTION ZONE. GIVE BLOWOUT PREVENTER PROGRAM, IF ANY.

I hereby certify that the information above is true and complete to the best of my knowledge and belief.

by Ken Beardsley Title Regulatory Coordinator Date 9/3/82

(This space for State Use)

APPROVED BY Mike Walker TITLE SUPERVISOR, DISTRICT II DATE SEP 9 1982

CONDITIONS OF APPROVAL, IF ANY:

Notify N.M.O.C.C. in sufficient
time to witness cementing

the 10 3/4 casing

/ MEXICO OIL CONSERVATION COMMISS N
WELL LOCATION AND ACREAGE DEDICATION PLAT

Form C-102
Supersedes C-128
Effective 1-1-65

All distances must be from the outer boundaries of the Section.

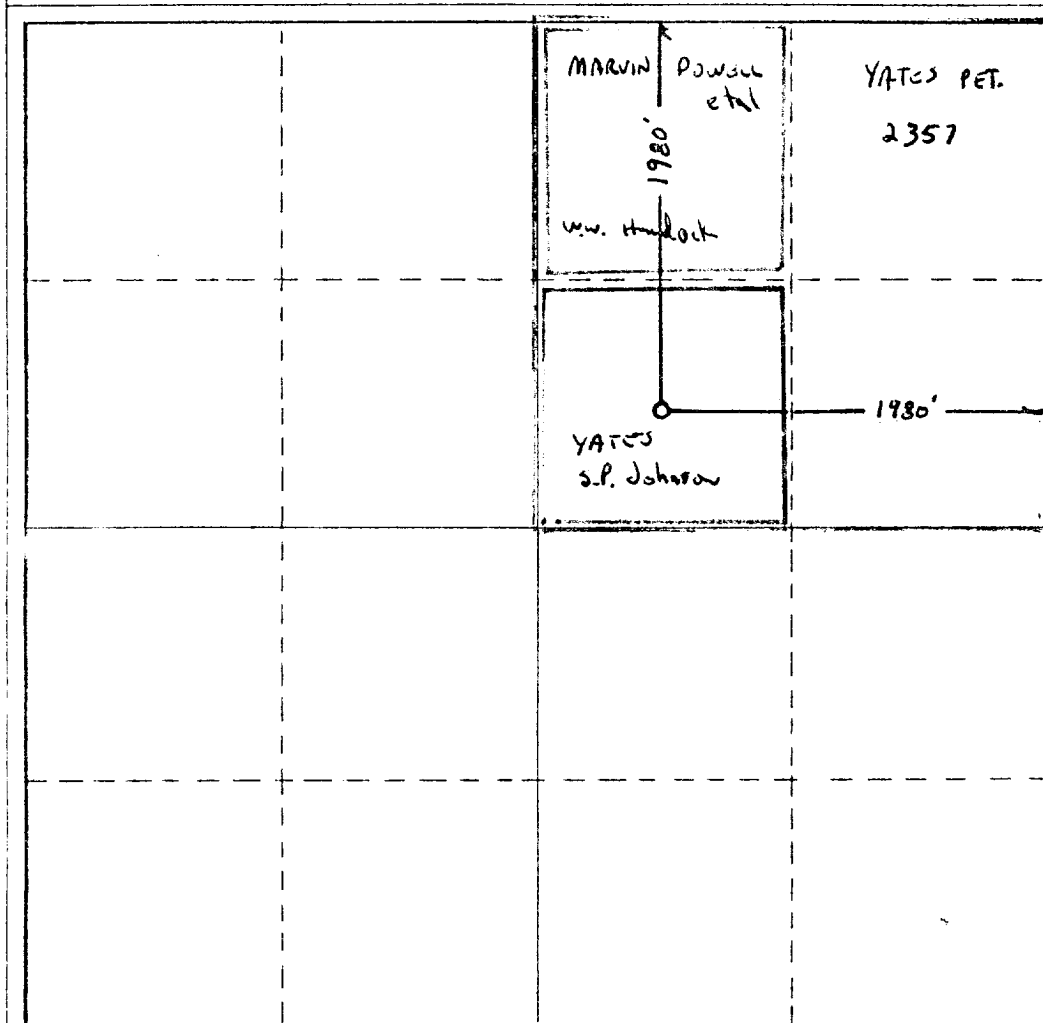
Operator YATES PETROLEUM CORPORATION			Lease Geraldine "VG" Com		Well No. 1
Unit Letter F 6	Section 29	Township 6 South	Range 26 East	County Chaves	
Actual Footage Location of Well:					
1980 feet from the North line and		1980 feet from the East line			
Ground Level Elev. 3660.0'	Producing Formation Abo	Pool Undesignated Abo	Dedicated Acreage: 160 Acres		

1. Outline the acreage dedicated to the subject well by colored pencil or hachure marks on the plat below.
2. If more than one lease is dedicated to the well, outline each and identify the ownership thereof (both as to working interest and royalty).
3. If more than one lease of different ownership is dedicated to the well, have the interests of all owners been consolidated by communitization, unitization, force-pooling, etc?

☒ Yes ☐ No If answer is "yes," type of consolidation **to be communitized**

If answer is "no," list the owners and tract descriptions which have actually been consolidated. (Use reverse side of this form if necessary.) _____

No allowable will be assigned to the well until all interests have been consolidated (by communitization, unitization, forced-pooling, or otherwise) or until a non-standard unit, eliminating such interests, has been approved by the Commission.



CERTIFICATION

I hereby certify that the information contained herein is true and complete to the best of my knowledge and belief.

Ken Beardemphl

Name

Ken Beardemphl

Position

Regulatory Coordinator

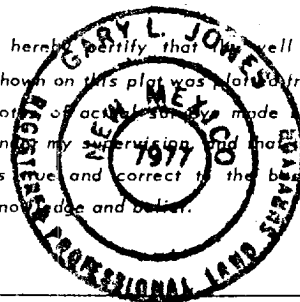
Company

Yates Petroleum Corp.

Date

9/3/82

I hereby certify that the well location shown on this plat was located from field notes or actual survey made by me or under my supervision and that the same is true and correct to the best of my knowledge and belief.



Date Surveyed

September 1, 1982

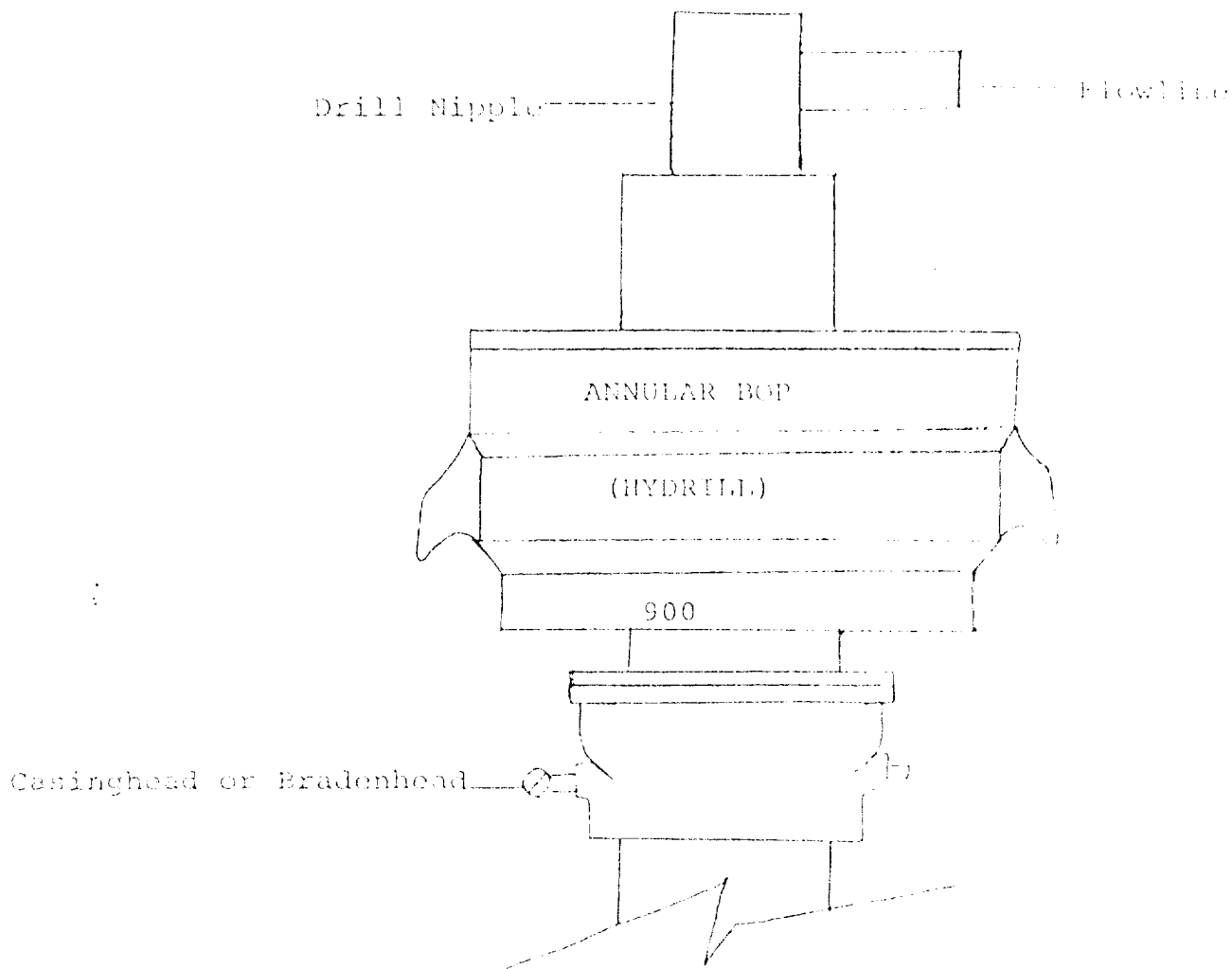
Registered Professional Engineer
and/or Land Surveyor

Dan Johnson

Certificate No.

7977

0 330 660 990 1320 1650 1980 2310 2640 2000 1500 1000 500 0



THE FOLLOWING CONSTITUTE MINIMUM BLOWOUT PREVENTER REQUIREMENTS

1. All preventers to be hydraulically operated with secondary manual controls installed prior to drilling out from under casing.
2. All connections from operating manifolds to preventers to be all steel. Hole or tube a minimum of one inch in diameter.
3. The available closing pressure shall be at least 15% in excess of that required with sufficient volume to operate the BOP's.
4. All connections to and from preventer to have a pressure rating equivalent to that of the BOP's.
5. Hole must be kept filled on trips below intermediate casing.