

NM L CONS. COMMISSION
Drawer DD
NM 88210
UNITED STATES
DEPARTMENT OF THE INTERIOR
GEOLOGICAL SURVEYSUBMIT IN LOCATE*
(Other instructions on
reverse side)Form approved.
Budget Bureau No. 42-R1425.

5. LEASE DESIGNATION AND SERIAL NO.

NM 32335

6. IF INDIAN, ALLOTTEE OR TRIBE NAME

NA

7. UNIT AGREEMENT NAME

NA

8. FARM OR LEASE NAME

Antelope Federal

9. WELL NO.

2

10. FIELD AND POOL OR WILDCAT

Undesignated - Abo

11. SEC., T., R., M., OR BLK.
AND SURVEY OR AREA

Sec. 29-4S-22E

12. COUNTY OR PARISH

Chaves

13. STATE

N.M.

APPLICATION FOR PERMIT TO DRILL, DEEPEN, OR PLUG BACK

1a. TYPE OF WORK

DRILL ☒DEEPEN ☐PLUG BACK ☐

b. TYPE OF WELL

OIL
WELL ☐GAS
WELL ☒

OTHER

SINGLE
ZONE ☒MULTIPLE
ZONE ☐

2. NAME OF OPERATOR

TRANSWESTERN GAS SUPPLY COMPANY

3. ADDRESS OF OPERATOR

P.O. Box 2521, Houston, TX 77001

4. LOCATION OF WELL (Report location clearly and in accordance with any State requirements)
At surface

1980' FSL 1980' FEL Sec. 29-4S-22E

At proposed prod. zone

Same

14. DISTANCE IN MILES AND DIRECTION FROM NEAREST TOWN OR POST OFFICE*

38 Miles Northwest of Roswell, New Mexico

15. DISTANCE FROM PROPOSED*

LOCATION TO NEAREST
PROPERTY OR LEASE LINE, FT.
(Also to nearest drig. unit line, if any)

1980'

16. NO. OF ACRES IN LEASE

2555.70

17. NO. OF ACRES ASSIGNED
TO THIS WELL

160

18. DISTANCE FROM PROPOSED LOCATION*

TO NEAREST WELL, DRILLING, COMPLETED,
OR APPLIED FOR, ON THIS LEASE, FT.

2951.61'

19. PROPOSED DEPTH

3800'

20. ROTARY OR CABLE TOOLS

Rotary

21. ELEVATIONS (Show whether DF, RT, GR, etc.)

4443' GL

22. APPROX. DATE WORK WILL START*

September 8, 1982

23.

PROPOSED CASING AND CEMENTING PROGRAM

SIZE OF HOLE	SIZE OF CASING	WEIGHT PER FOOT	SETTING DEPTH	QUANTITY OF CEMENT
17 1/2"	13 3/8"	48.0#	60'	45 Cu. Ft. Grouted To Surface
9 7/8"	7 5/8"	26.4#	1500'	450 sx Circulated
6 3/4"	4 1/2"	10.5#	TD 3800'	300 sx Cemented back to 2200'±

*Above casing program conforms to oral approval by New Mexico Oil Conservation Division.

Propose to drill to approximately 3800' to test Abo and intermediate formations. Will be drilled with rotary tools using mud as the circulating medium. Complete by perforating casing and treating the formation.

Double-ram 3000# WP BOP will be installed on the 7 5/8" casing and tested daily.

See attached "Supplemental Drilling Data".

Gas is dedicated.

IN ABOVE SPACE DESCRIBE PROPOSED PROGRAM: If proposal is to deepen or plug back, give data on present productive zone and proposed new productive zone. If proposal is to drill or deepen directionally, give pertinent data on subsurface locations and measured and true vertical depths. Give blowout preventer program, if any.

24.

SIGNED

JERRY L. LONG

TITLE Agent

SEP 7 1982

DATE September 6, 1982

(This space for Federal or State office use)

G. S. GEORGE H. STEWART

OIL & GAS
U.S. GEOLOGICAL SURVEY
ROSWELL, NEW MEXICO

PERMIT NO.

APPROVAL DATE

APPROVED BY

TITLE

DATE

CONDITIONS OF APPROVAL, IF ANY:

JAMES J. GILHAM
DIRECTOR OF SILVER BOR

*See Instructions On Reverse Side

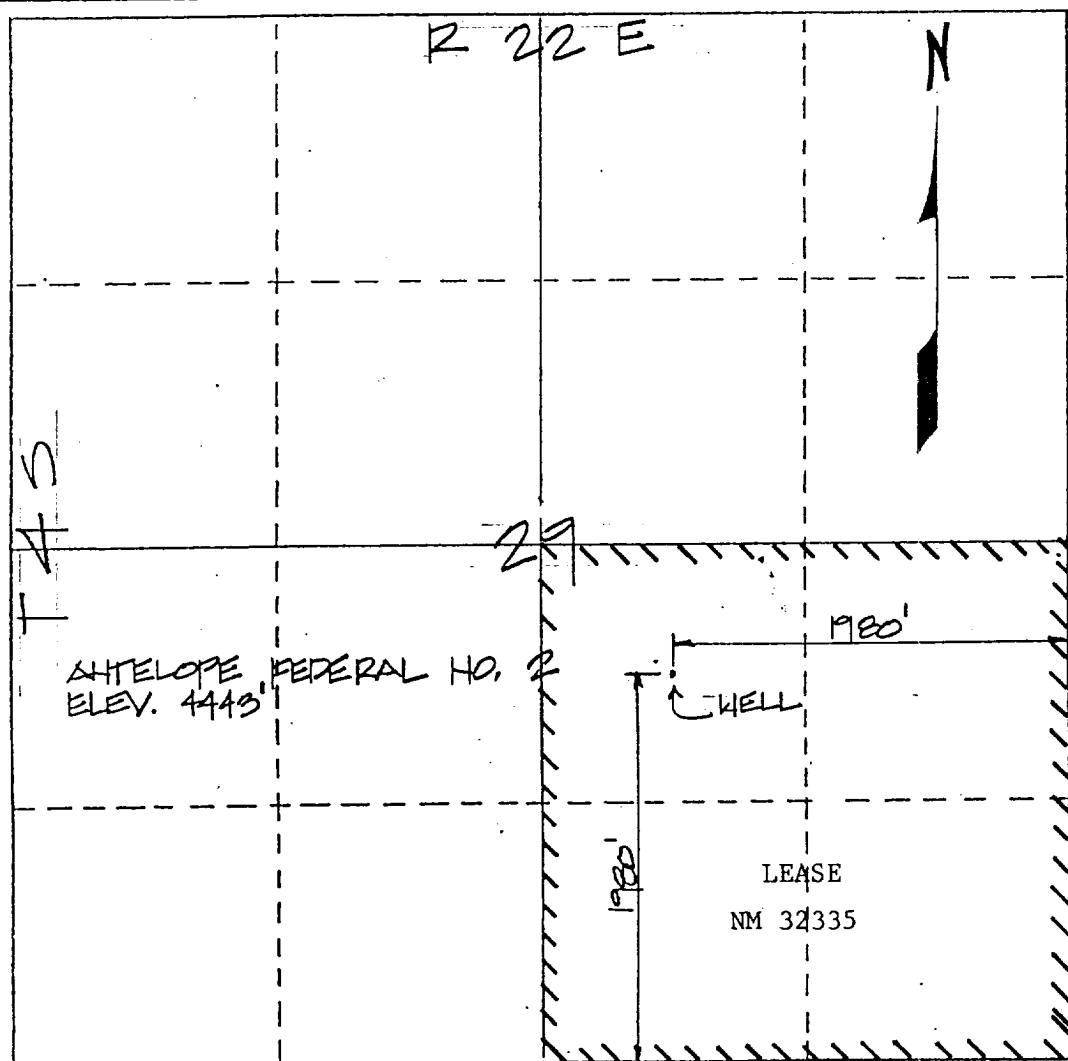
Operator TRANSWESTERN GAS SUPPLY COMPANY		Lease Antelope Federal		Well No. 2
Unit Letter J	Section 29	Township T-4-S	Range R-22-E	County Chaves
Actual Footage Location of Well:				
1980		EAST	1980	SOUTH
feet from the		line and	feet from the	line
Ground Level Elev. 4443'	Producing Formation Abo	Pool Undesignated- Abo	Dedicated Acreage: 160 Acres	

1. Outline the acreage dedicated to the subject well by colored pencil or hatchure marks on the plat below.
2. If more than one lease is dedicated to the well, outline each and identify the ownership thereof (both as to working interest and royalty). Single Lease
3. If more than one lease of different ownership is dedicated to the well, have the interests of all owners been consolidated by communitization, unitization, force-pooling, etc?

☐ Yes ☐ No If answer is "yes," type of consolidation _____

If answer is "no," list the owners and tract descriptions which have actually been consolidated. (Use reverse side of this form if necessary.) _____

No allowable will be assigned to the well until all interests have been consolidated (by communitization, unitization, forced-pooling, or otherwise) or until a non-standard unit, eliminating such interests, has been approved by the Division.



CERTIFICATION

I hereby certify that the information contained herein is true and complete to the best of my knowledge and belief.

Name JERRY W. LONG

Name _____

JERRY W. LONG

Position
Agent

Company

TRANSWESTERN GAS SUPPLY CO.

Date _____

September 6, 1982

I hereby certify that the well location shown on this plat was plotted from field notes of actual surveys made by me or under my supervision, and that the same is true and correct to the best of my knowledge and belief.

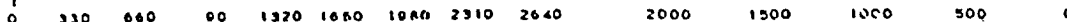
2 September 1982

Date Surveyed _____

Registered Professional Engineer
and/or Land Surveyor

David C. Clausen, P.L.S.

N.M. License 6547
Certificate No.



SUPPLEMENTAL DRILLING DATA

TRANSWESTERN GAS SUPPLY COMPANY
No.2 Antelope Federal
1980'FSL 1980'FEL Sec.29-4S-22E
Chaves County, N.M.

NM 32335

The following items supplement Form 9-331C in accordance with instructions contained in NTL-6.

1. SURFACE FORMATION: Permian San Andres

2. ESTIMATED TOPS OF GEOLOGIC MARKER:

San Andres	Surface
Glorieta	1130'
Tubb	2280'
Abo	2725'

3. ESTIMATED DEPTHS TO WATER, OIL OR GAS FORMATION:

Fresh Water - None (Water wells in this area have been unsuccessful)
Salt Water - 2280' to TD
Gas - 2725' to 3800'

4. PROPOSED CASING PROGRAM:

13 3/8" Casing - Set two joints with rat hole machine and grout to surface.
7 5/8" Casing - Set at 1500'± and cement with an estimated 450 sx of cement. (Circulate)
4 1/2" - Set to total depth and cement with an estimated 300 sx of cement to isolate all water, oil and gas zones.

Type of cement and additives will be determined by hole conditions. The intermediate and production casing strings will be tested to 1000 psi.

5. PRESSURE CONTROL EQUIPMENT: Blowout preventer stack will consist of double-ram blowout preventer rated to 3000# WP. A sketch of the BOP is attached.

6. CIRCULATING MEDIUM: Hole for 13 3/8" conductor pipe will be drilled with a rat hole auger. Mud will

R. 21 E.

R. 22 E.

R. 23 E.

TRANSWESTERN GAS SUPPLY COMPANY
No. 2 Antelope Federal
1980' FSL 1980' FEL Sec. 29-4S-22E
Chaves County, N.M.

NM 32335

ROSWELL

DISTRICT-6

DeBACA
CHAVES

Arroyo

Igneo

POQUITA

MESA

HWY 20

EXISTING ROAD

ROSWELL
37 Mi.

MARTIN

DANIELS

R. 21 E.

R. 22 E.

R. 23 E.

R. 23 E.

R. 22 E.

PIERCE

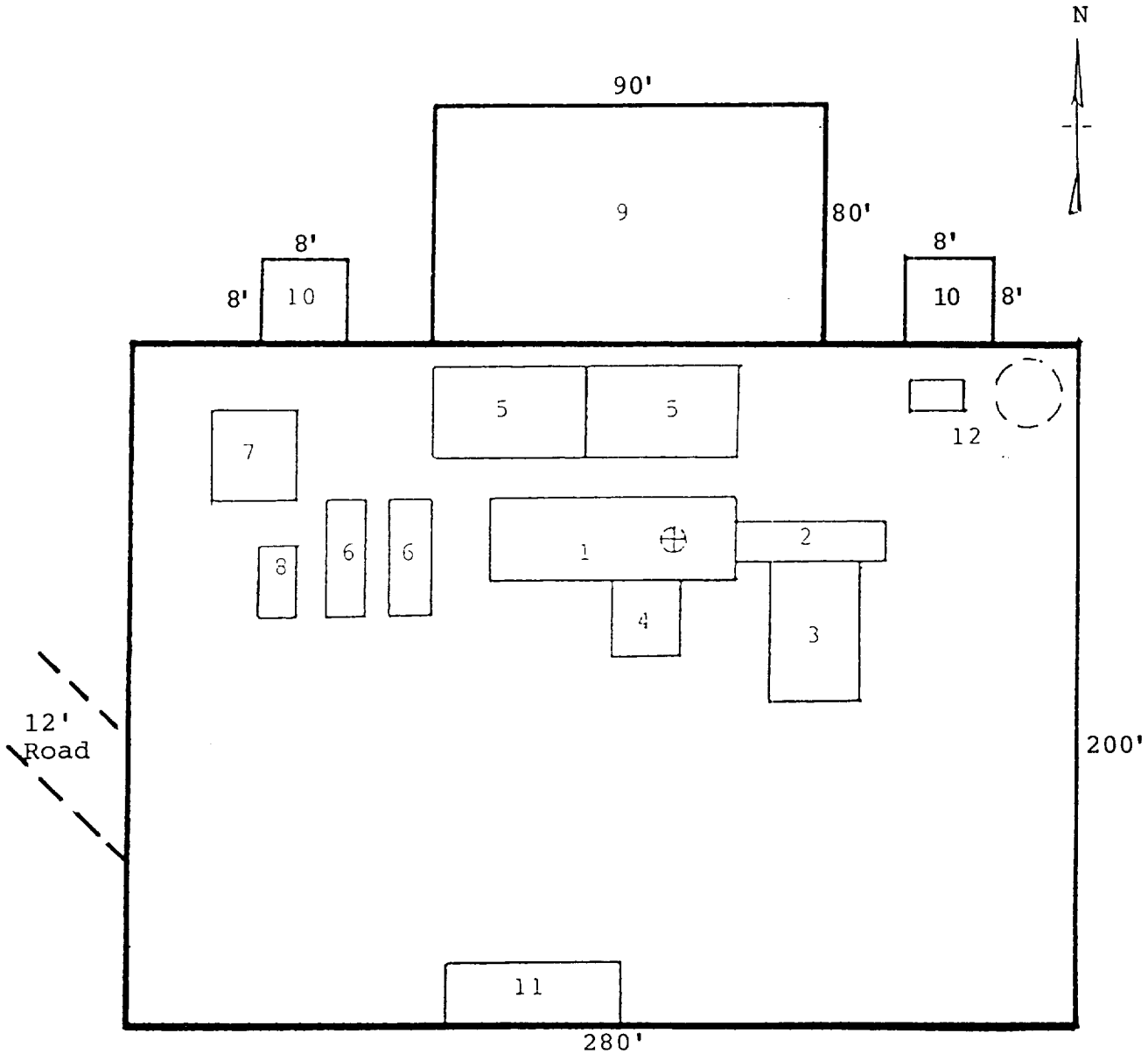
FIRST

HWY 285

EXHIBIT A

NE-7

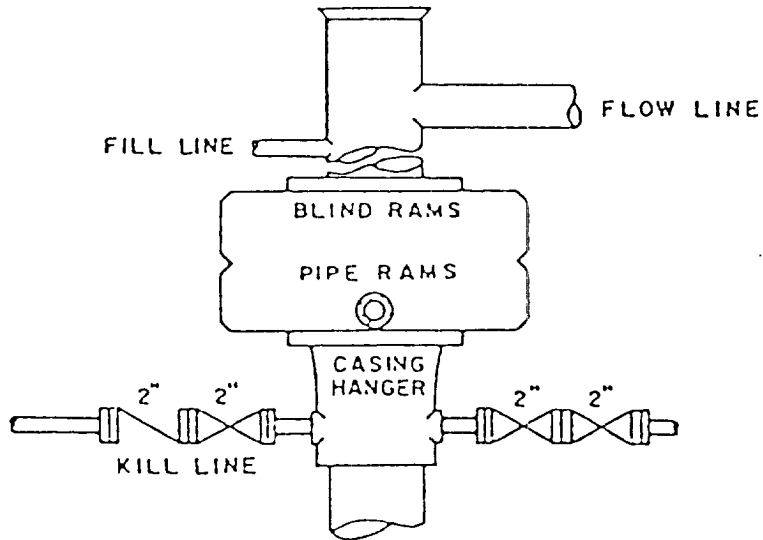
TRANSWESTERN GAS SUPPLY COMPANY
 No.2 Antelope Federal
 1980'FSL 1980'FEL Sec.29-4S-22E
 Chaves County, N.M.



RIG LAYOUT

- | | |
|-----------------|---------------------------|
| 1. Substructure | 7. Water Tank |
| 2. Catwalk | 8. Light Plant |
| 3. Pipe Rack | 9. Reserve Pit |
| 4. Doghouse | 10. Trash Pit |
| 5. Mud Pits | 11. Trailer House |
| 6. Mud Pumps | 12. Production Facilities |

TRANSWESTERN GAS SUPPLY COMPANY
No.2 Antelope Federal
1980'FSL 1980'FEL Sec.29-4S-22E
Chaves County, N.M.



BOP STACK

3000 PSI WORKING PRESSURE
RAMS TO BE OPERATED DAILY