

30-003-61774

Form 9-331 C  
(May 1963)

## NEW OIL CONS. COMMISSION

Draw: DD

Artesia, NM 88210

SUBMIT IN ' LOCATE'  
(Other instructions on  
reverse side)Form approved.  
Budget Bureau No. 42-R1425.UNITED STATES  
DEPARTMENT OF THE INTERIOR  
GEOLOGICAL SURVEY

c/sf

## APPLICATION FOR PERMIT TO DRILL, DEEPEN, OR PLUG BACK

## 1a. TYPE OF WORK

DRILL ☒DEEPEN ☐PLUG BACK ☐

## b. TYPE OF WELL

OIL  
WELL ☐GAS  
WELL ☒

OTHER

SINGLE  
ZONE ☒MULTIPLE  
ZONE ☐

## 2. NAME OF OPERATOR

TRANSWESTERN GAS SUPPLY COMPANY

## 3. ADDRESS OF OPERATOR

P.O. Box 2521, Houston, TX 77001

## 4. LOCATION OF WELL (Report location clearly and in accordance with any State requirements.)

At surface

660' FSL 660' FWL Sec. 29-4S-22E

At proposed prod. zone

Same

## 14. DISTANCE IN MILES AND DIRECTION FROM NEAREST TOWN OR POST OFFICE\*

38 Miles Northwest of Roswell, New Mexico

## 15. DISTANCE FROM PROPOSED\*

LOCATION TO NEAREST  
PROPERTY OR LEASE LINE, FT.  
(Also to nearest drlg. unit line, if any)

660'

16. NO. OF ACRES IN LEASE  
2555.7017. NO. OF ACRES ASSIGNED  
TO THIS WELL

160

## 18. DISTANCE FROM PROPOSED LOCATION\*

TO NEAREST WELL, DRILLING, COMPLETED,  
OR APPLIED FOR, ON THIS LEASE, FT.

2640'

19. PROPOSED DEPTH  
3800'20. ROTARY OR CABLE TOOLS  
Rotary

## 21. ELEVATIONS (Show whether DF, RT, GR, etc.)

4458' GL

## 22. APPROX. DATE WORK WILL START\*

September 8, 1982

## 23.

## PROPOSED CASING AND CEMENTING PROGRAM

SIZE OF HOLE	SIZE OF CASING	WEIGHT PER FOOT	SETTING DEPTH	QUANTITY OF CEMENT
17 1/2"	13 3/8"	48.0#	60'	45 Cu. Ft. Grouted To Surface
9 7/8"	7 5/8"	26.4#	1500'	450 sx Circulated
6 3/4"	4 1/2"	10.5#	TD 3800'	300 sx Cemented back to 2200'±

\*Above casing program conforms to oral approval by New Mexico Oil Conservation Division.

Propose to drill to approximately 3800' to test Abo and intermediate formations. Will be drilled with rotary tools using mud as the circulating medium. Complete by perforating casing and treating the formation.

Double-ram 3000# WP BOP will be installed on the 7 5/8" casing and tested daily.

See attached "Supplemental Drilling Data".

Gas is dedicated.

IN ABOVE SPACE DESCRIBE PROPOSED PROGRAM: If proposal is to deepen or plug back, give data on present productive zone and proposed new productive zone. If proposal is to drill or deepen directionally, give pertinent data on subsurface locations and measured and true vertical depths. Give blowout preventer program, if any.

## 24.

SIGNED

JERRY W. LONG

TITLE Agent

DATE September 6, 1982

(This space for Federal or State office use)

(Orig. Sgd.) GEORGE H. STEWART

PERMIT NO.

APPROVAL DATE

APPROVED BY

TITLE

DATE

CONDITIONS OF APPROVAL, IF ANY:

JERRY W. LONG  
DIRECTOR

\*See Instructions On Reverse Side

RECEIVED  
SEP 7 1982Posted IN  
9-24-82  
HPE: MB

All distances must be from the outer boundaries of the Section.

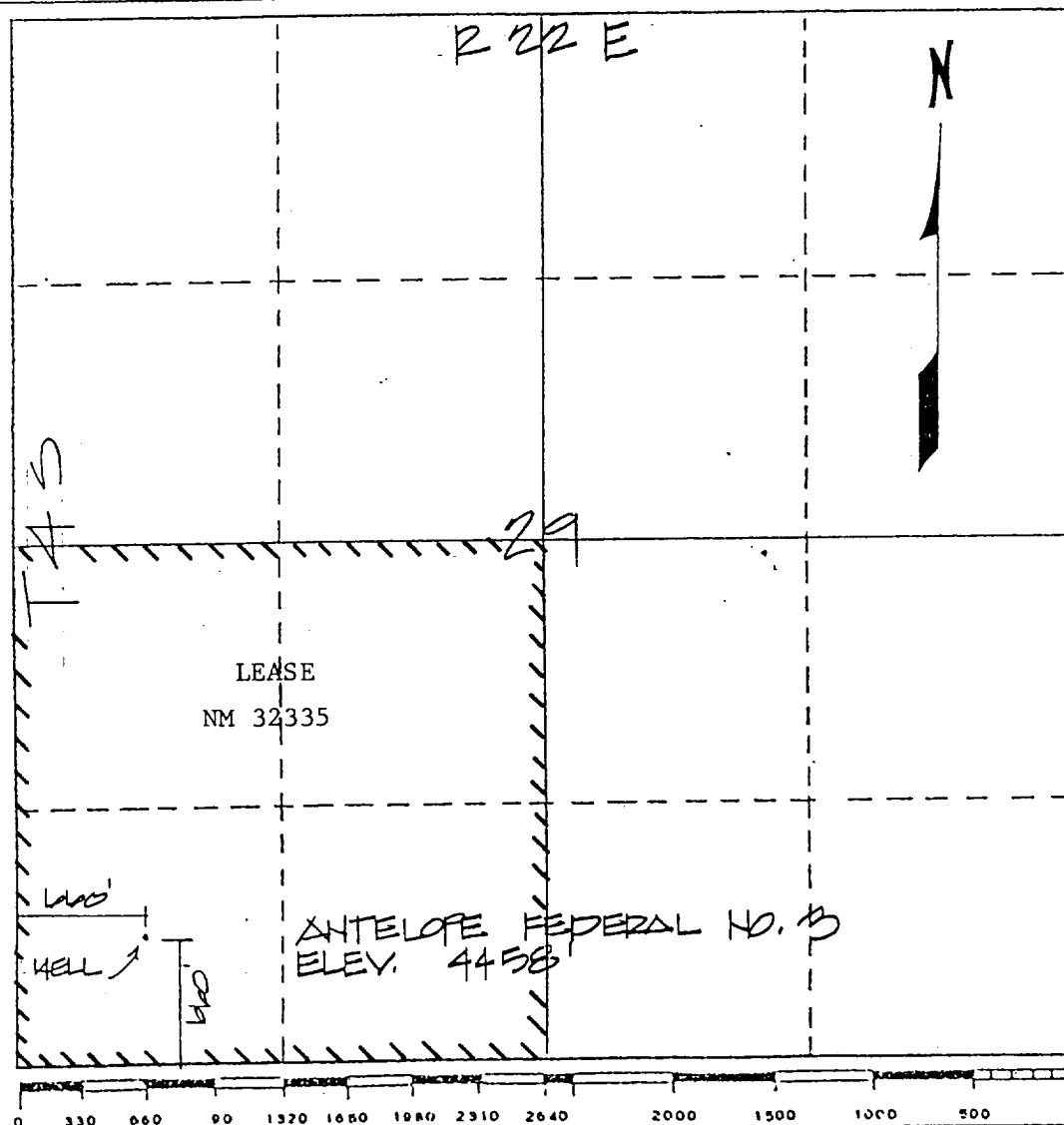
Operator TRANSWESTERN GAS SUPPLY COMPANY			Lease Antelope Federal		Well No. 3
Unit Letter M	Section 29	Township T-4-S	Range R-22-E	County Chaves	
Actual Footage Location of Well: 660 feet from the WEST line and 660 feet from the SOUTH line					
Ground Level Elev. 4458'	Producing Formation Abo		Pool Undesignated - Abo		Dedicated Acreage: 160 Acres

1. Outline the acreage dedicated to the subject well by colored pencil or hatchure marks on the plat below.
2. If more than one lease is dedicated to the well, outline each and identify the ownership thereof (both as to working interest and royalty). Single Lease
3. If more than one lease of different ownership is dedicated to the well, have the interests of all owners been consolidated by communitization, unitization, force-pooling, etc?

☐ Yes ☐ No If answer is "yes," type of consolidation \_\_\_\_\_

If answer is "no," list the owners and tract descriptions which have actually been consolidated. (Use reverse side of this form if necessary.) \_\_\_\_\_

No allowable will be assigned to the well until all interests have been consolidated (by communitization, unitization, forced-pooling, or otherwise) or until a non-standard unit, eliminating such interests, has been approved by the Division



## CERTIFICATION

I hereby certify that the information contained herein is true and complete to the best of my knowledge and belief.

*Jerry W. Long*  
Name  
JERRY W. LONG

Position  
Agent

Company

TRANSWESTERN GAS SUPPLY CO.

Date

September 6, 1982

*David C. Clausen*  
I hereby certify that the well location shown on this plat was obtained from field notes of actual survey made by me or under my supervision and that the same are true and correct to the best of my knowledge and belief.  
DAVID C. CLAUSEN  
REGISTERED LAND SURVEYOR  
6540

2 September 1982

Date Surveyed

Registered Professional Engineer  
and/or Land Surveyor

David C. Clausen, P.L.S.

N.M. License 6547

Certificate No.

## SUPPLEMENTAL DRILLING DATA

TRANSWESTERN GAS SUPPLY COMPANY  
No.3 Antelope Federal  
660'FSL 660'FWL Sec.29-4S-22E  
Chaves County, N.M.

NM 32335

The following items supplement Form 9-331C in accordance with instructions contained in NTL-6.

1. SURFACE FORMATION: Permian San Andres

2. ESTIMATED TOPS OF GEOLOGIC MARKERS:

San Andres	Surface
Glorieta	1130'
Tubb	2280'
Abo	2725'

3. ESTIMATED DEPTHS TO WATER, OIL OR GAS FORMATIONS:

Fresh Water	- None (Water Wells in this area have been unsuccessful)
Salt Water	- 2280' to TD
Gas	- 2725' to 3800'

4. PROPOSED CASING PROGRAM:

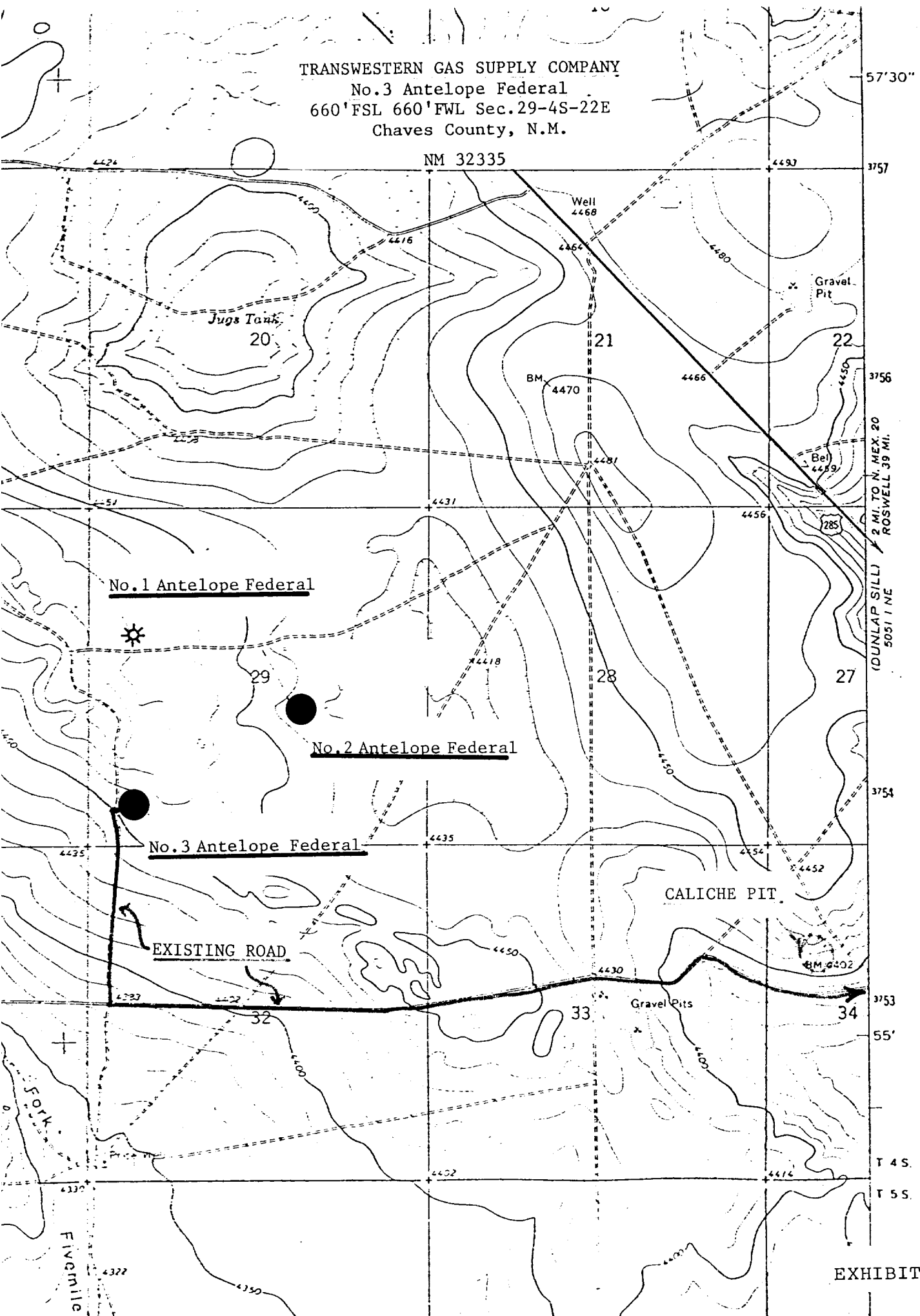
13 3/8" Casing	- Set two joints with rat hole machine and grout to surface.
7 5/8" Casing	- Set at 1500'± and cement with an estimated 450 sx of cement. (Circulate)
4 1/2" Casing	- Set to total depth and cement with an estimated 300 sx of cement to isolate all water, oil and gas zones.

Type of cement and additives will be determined by hole conditions. The intermediate and production casing strings will be tested to 1000 psi.

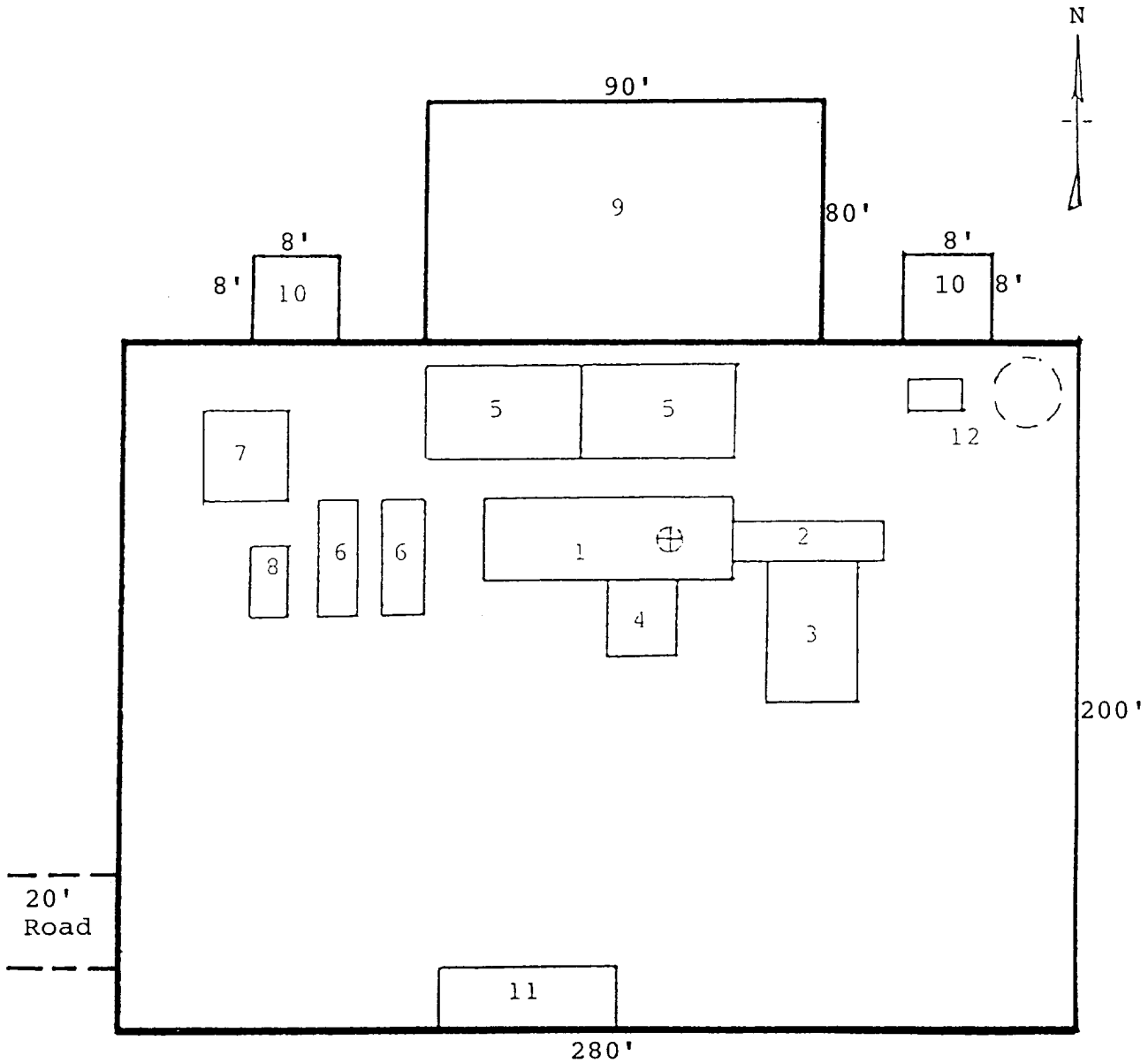
5. PRESSURE CONTROL EQUIPMENT: Blowout preventer stack will consist of double-ram blowout preventer rated to 3000# WP. A sketch of the BOP is attached.

6. CIRCULATING MEDIUM: Hole for 13 3/8" conductor pipe will be drilled with a rat hole auger. Mud will

TRANSWESTERN GAS SUPPLY COMPANY  
No.3 Antelope Federal  
660' FSL 660' FWL Sec.29-4S-22E  
Chaves County, N.M.



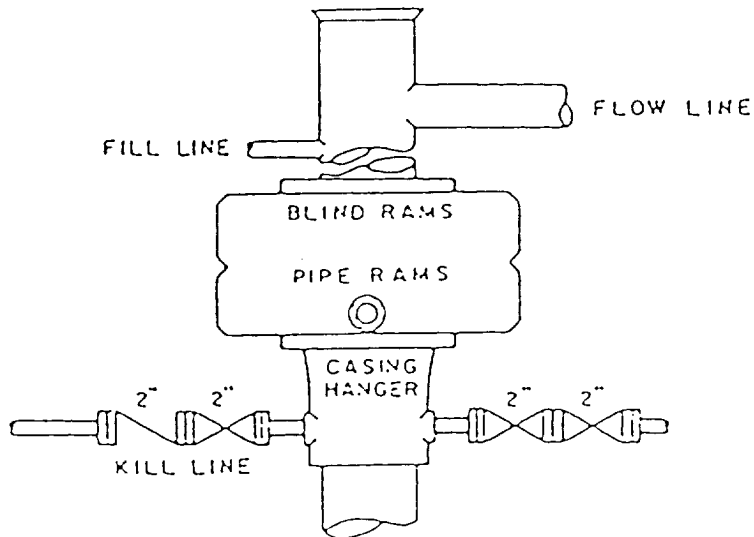
TRANSWESTERN GAS SUPPLY COMPANY  
 No.3 Antelope Federal  
 660'FSL 660'FWL Sec.29-4S-22E  
 Chaves County, N.M.



RIG LAYOUT

- |                 |                           |
|-----------------|---------------------------|
| 1. Substructure | 7. Water Tank             |
| 2. Catwalk      | 8. Light Plant            |
| 3. Pipe Rack    | 9. Reserve Pit            |
| 4. Doghouse     | 10. Trash Pit             |
| 5. Mud Pits     | 11. Trailer House         |
| 6. Mud Pumps    | 12. Production Facilities |

TRANSWESTERN GAS SUPPLY COMPANY  
No.3 Antelope Federal  
660'FWL 660'FWL Sec.29-4S-22E  
Chaves County, N.M.



BOP STACK

3000 PSI WORKING PRESSURE  
RAMS TO BE OPERATED DAILY