

UNITED STATES
DEPARTMENT OF THE INTERIOR
GEOLOGICAL SURVEY

APPLICATION FOR PERMIT TO DRILL, DEEPEN, OR PLUG BACK

1a. TYPE OF WORK DRILL <input checked="" type="checkbox"/> DEEPEN <input type="checkbox"/> RECEIVEDUG BACK <input type="checkbox"/>			5. LEASE DESIGNATION AND SERIAL NO. NM-18483		
b. TYPE OF WELL OIL WELL <input type="checkbox"/> GAS WELL <input checked="" type="checkbox"/> OTHER <input type="checkbox"/>			6. IF INDIAN, ALLOTTEE OR TRIBE NAME		
2. NAME OF OPERATOR Yates Petroleum Corporation ✓			7. UNIT AGREEMENT NAME		
3. ADDRESS OF OPERATOR 207 S. 4th, Artesia, New Mexico 88210, OFFICE			8. FARM OR LEASE NAME Morton "SZ" Federal		
4. LOCATION OF WELL (Report location clearly and in accordance with any State requirements.)* At surface 660' FSL and 660' FEL At proposed prod. zone same			9. WELL NO. 4		
14. DISTANCE IN MILES AND DIRECTION FROM NEAREST TOWN OR POST OFFICE* Approximately 22 miles NNE of Roswell, NM			10. FIELD AND POOL, OR WILDCAT Unders. Pecos Slope Abo		
15. DISTANCE FROM PROPOSED* LOCATION TO NEAREST PROPERTY OR LEASE LINE, FT. (Also to nearest drlg. unit line, if any) 660'			11. SEC., T., R., M., OR BLK. AND SURVEY OR AREA Sec. 10-T8S-R25E		
16. NO. OF ACRES IN LEASE 640			12. COUNTY OR PARISH Chaves		
17. NO. OF ACRES ASSIGNED TO THIS WELL 160			13. STATE NM		
18. DISTANCE FROM PROPOSED* LOCATION TO NEAREST WELL, DRILLING, COMPLETED, OR APPLIED FOR, ON THIS LEASE, FT. 4200'			20. ROTARY OR CABLE TOOLS Rotary		
21. ELEVATIONS (Show whether DF, RT, GR, etc.) 3601.1' GL			22. APPROX. DATE WORK WILL START* ASAP		

23. PROPOSED CASING AND CEMENTING PROGRAM

SIZE OF HOLE	SIZE OF CASING	WEIGHT PER FOOT	SETTING DEPTH	QUANTITY OF CEMENT
14 3/4"	10 3/4"	40.5# J-55	appr. 1000'	660 sx circulated
7 7/8"	4 1/2"	9.5#	TD	350 sx

We propose to drill and test the Abo and intermediate formations. Approximately 1000' of surface casing will be set and cement circulated to shut off gravel and caving. If needed (lost circulation) 7" intermediate casing will be run to 1500' and cemented with enough cement calculated to tie back into the surface casing. If commercial, production casing will be run and cemented with adequate cover, perforated and stimulated as needed for production.

MUD PROGRAM: FW gel and LCM to 1000', Brine to 3500', Brine & KCL water to TD.

BOP PROGRAM: BOP's will be installed at the offset and tested daily.

GAS NOT DEDICATED.

IN ABOVE SPACE DESCRIBE PROPOSED PROGRAM: If proposal is to deepen or plug back, give data on present productive zone and proposed new productive zone. If proposal is to drill or deepen directionally, give pertinent data on subsurface locations and measured and true vertical depths. Give blowout preventer program, if any.

24.

SIGNED

Cy Cowan

TITLE Regulatory Coordinator DATE 9/28/82

(This space for Federal or State office use)

(Orig. Sgd.) **GEORGE H. STEWART**

PERMIT NO.

OCT 7 1982

APPROVAL DATE

APPROVED BY

CONDITIONS OF APPROVAL, IF ANY:

D. L. GILHAM
DISTRICT SUPERVISOR

TITLE

RECEIVED

SEP 30 1982

OIL & GAS
MINERALS MGMT. SERVICE

N MEXICO OIL CONSERVATION COMMISS
WELL LOCATION AND ACREAGE DEDICATION PLAT

Form C-102
Supersedes C-128
Effective 1-1-65

All distances must be from the outer boundaries of the Section.

Operator YATES PETROLEUM CORPORATION			Lease Morton "SZ" Federal		Well No. 4
Unit Letter P	Section 10	Township 8 South	Range 25 East	County Chaves	
Actual Footage Location of Well: 660' feet from the South line and 660 feet from the East line					
Ground Level Elev. 3601.1'	Producing Formation ABO		Pool PECOS Slope ABO	Dedicated Acreage: 160 Acres	

1. Outline the acreage dedicated to the subject well by colored pencil or hachure marks on the plat below.
2. If more than one lease is dedicated to the well, outline each and identify the ownership thereof (both as to working interest and royalty).
3. If more than one lease of different ownership is dedicated to the well, have the interests of all owners been consolidated by communitization, unitization, force-pooling, etc?

☐ Yes ☐ No If answer is "yes," type of consolidation _____

If answer is "no," list the owners and tract descriptions which have actually been consolidated. (Use reverse side of this form if necessary.) _____

No allowable will be assigned to the well until all interests have been consolidated (by communitization, unitization, forced-pooling, or otherwise) or until a non-standard unit, eliminating such interests, has been approved by the Commission.

CERTIFICATION

I hereby certify that the information contained herein is true and complete to the best of my knowledge and belief.

Cy Cowan

Name

Cy Cowan

Position

Regulatory Coordinator

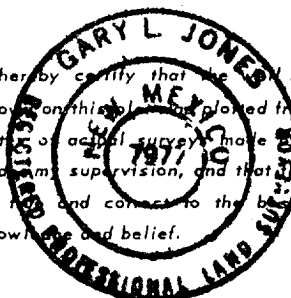
Company

Yates Petroleum Corp.

Date

9/28/82

I hereby certify that the location shown on this plat was plotted from field notes of actual surveys made by me or under my supervision, and that the same is true and correct to the best of my knowledge and belief.



Date Surveyed

September 27, 1982

Registered Professional Engineer and/or Land Surveyor

Gary L. Jones

Certificate No.

7977

0 330 660 990 1320 1650 1980 2310 2640 2000 1500 1000 500 0

YATES PETROLEUM CORPORATION

Fullerton "SZ" Federal #4
1980' FNL and 660' FEL
Section 10-T8S-R25E
Developmental Well

In conjunction with Form 9-331C, Application for Permit to Drill subject well, Yates Petroleum Corporation submits the following ten items of pertinent information in accordance with USGS requirements.

1. The geologic surface formation is quaternary alluvium.
2. The estimated tops of geologic markers are as follows:

San Andres	375'
Glorieta	1479'
Fullerton	2924'
Abo	3641'
TD	4200'

3. The estimated depths at which anticipated water, oil or gas formations are expected to be encountered:

Water: approximately 200'

Oil or Gas: Abo 3660'

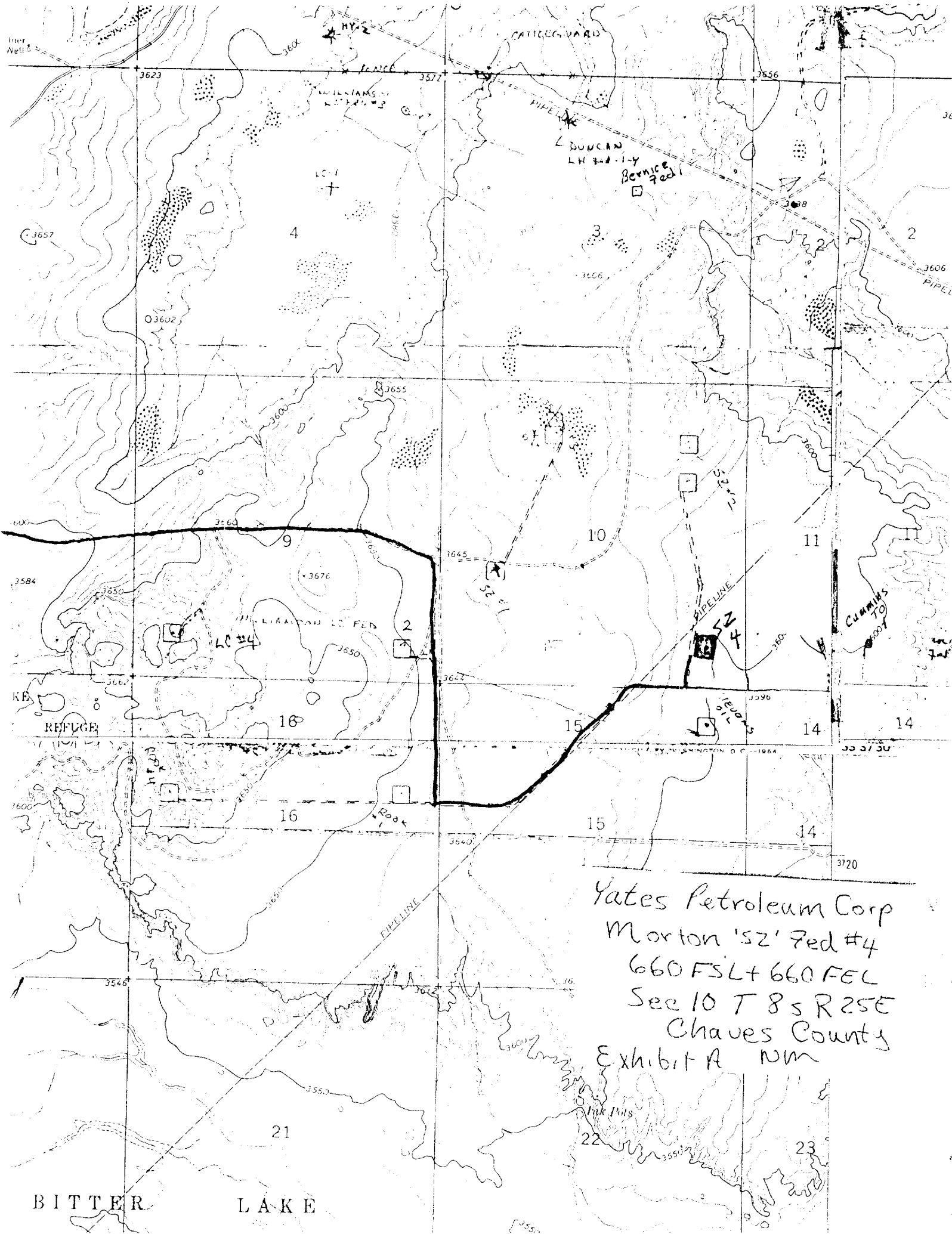
4. Proposed Casing Program: See Form 9-331C.
5. Pressure Control Equipment: See Form 9-331C and Exhibit B.
6. Mud Program: See Form 9-331C.
7. Auxiliary Equipment: Kelly Cock; pit level indicators and flow sensor equipment;
sub with full-opening valve on floor, drill pipe connection.
8. Testing, Logging and Coring Program:

Samples: Surface casing to TD.

DST's: As warranted

Coring: None

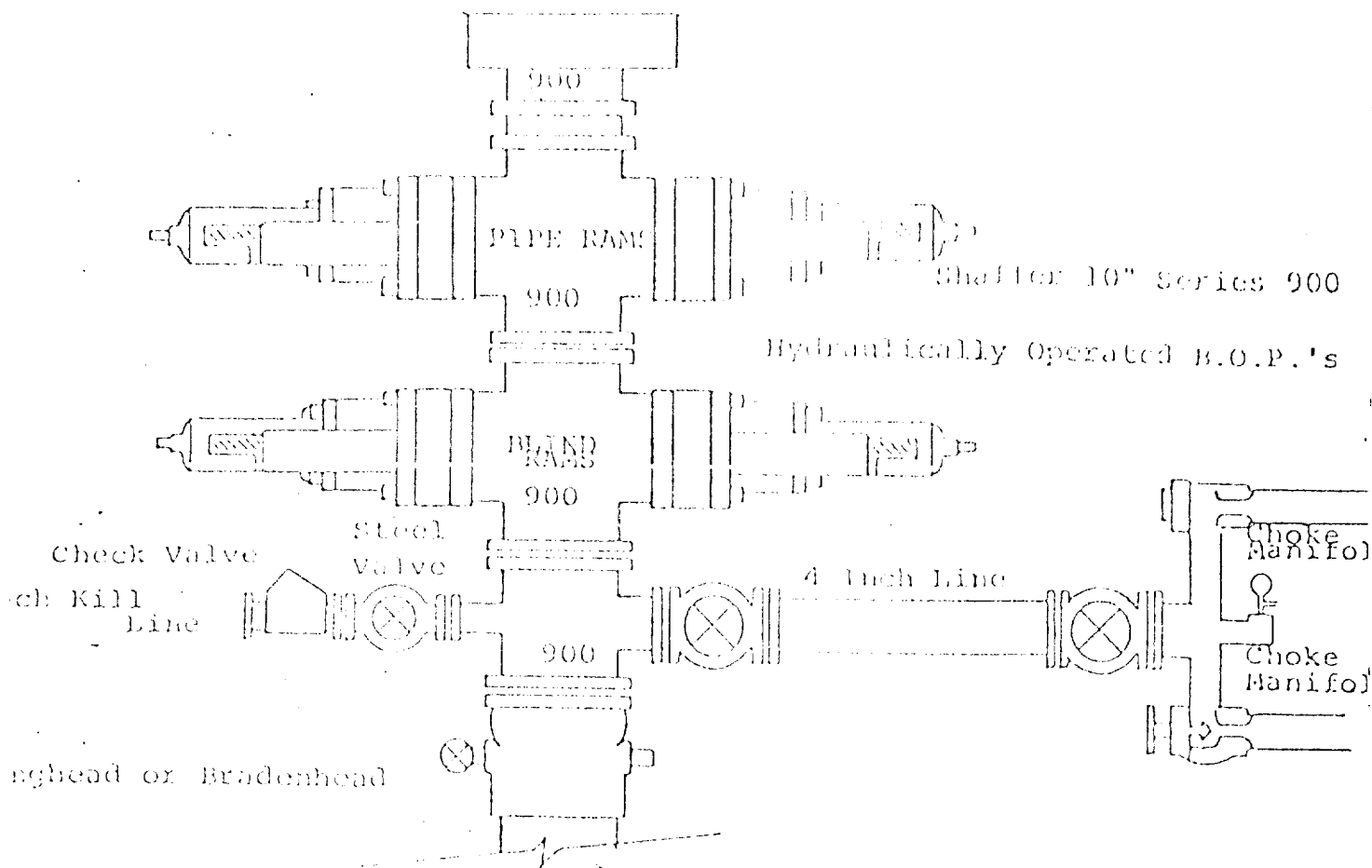
Logging: CNL-FDC TD to casing w/GR-CNL to surface & DLL from TD to casing with selected min RxO.
9. No abnormal pressures or temperatures are anticipated.
10. Anticipated starting date: As soon as possible after approval.



Yates Petroleum Corp
Morton '52' Fed #4
660 FSL + 660 FEL
Sec 10 T 8 S R 25 E
Chaves County
Exhibit A WM

BITTER LAKE

EXHIBIT B



FOLLOWING CONSTITUTE MINIMUM BLOWOUT PREVENTER REQUIREMENTS

- All preventers to be hydraulically operated with secondary manual control installed prior to drilling out from under casing.
- Choke outlet to be a minimum of 4" diameter.
- Kill line to be of all steel construction of 2" minimum diameter.
- All connections from operating manifolds to preventers to be all steel.
- hole or tube a minimum of one inch in diameter.
- The available closing pressure shall be at least 15% in excess of that required with sufficient volume to operate the B.O.P.'s.
- All connections to and from preventer to have a pressure rating equivalent to that of the B.O.P.'s.
- Inside blowout preventer to be available on rig floor.
- Operating controls located a safe distance from the rig floor.
- Hole must be kept filled on trips below intermediate casing. Operator not responsible for blowouts resulting from not keeping hole full.
- B. P. float must be installed and used below zone of first gas intrusion

