

Dr. r DD  
Antesla, NM 88210  
**UNITED STATES**  
**DEPARTMENT OF THE INTERIOR**  
**GEOLOGICAL SURVEY**

SUBMIT IN 1 LOCATE\*  
(Other instructions on reverse side)

Form approved.  
Budget Bureau No. 42-R1425.

**APPLICATION FOR PERMIT TO DRILL, DEEPEN, OR PLUG BACK**

1a. TYPE OF WORK

DRILL ☒

DEEPEN ☐

RECEIVED

PLUG BACK ☐

b. TYPE OF WELL

OIL WELL ☐

GAS WELL ☒

OTHER

SINGLE ZONE ☐

MULTIPLE ZONE ☐

2. NAME OF OPERATOR

STEVENS OPERATING CORPORATION

OCT 18 1982

3. ADDRESS OF OPERATOR

P. O. Box 2408, Roswell, New Mexico 88201

O. C. D.

4. LOCATION OF WELL (Report location clearly and in accordance with any State requirements.)

At surface

660 FNL 990 FWL, Sec. 33, T-7-S, R-26-E

At proposed prod. zone SAME

14. DISTANCE IN MILES AND DIRECTION FROM NEAREST TOWN OR POST OFFICE\*

23.5 airmiles northeast of Roswell, New Mexico

15. DISTANCE FROM PROPOSED\*

660'

LOCATION TO NEAREST PROPERTY OR LEASE LINE, FT. (Also to nearest drig. unit line, if any)

16. NO. OF ACRES IN LEASE

600

18. DISTANCE FROM PROPOSED LOCATION\*

TO NEAREST WELL, DRILLING, COMPLETED, OR APPLIED FOR, ON THIS LEASE, FT.

19. PROPOSED DEPTH

4650'

21. ELEVATIONS (Show whether DF, RT, GR, etc.)

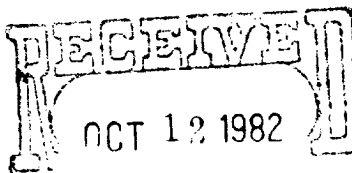
23. PROPOSED CASING AND CEMENTING PROGRAM

SIZE OF HOLE	SIZE OF CASING	WEIGHT PER FOOT	SETTING DEPTH
12 1/4"	8 3/8"	24.0#	700'
7 7/8"	4 1/2"	10.5#	4650'

After setting and cementing production string, payzones will be perforated and stimulated as needed for production.

Gas is not dedicated.

Attached are: Well Location and Acreage Dedication Plat  
Supplemental Drilling Data  
Surface Use Plan



IN ABOVE SPACE DESCRIBE PROPOSED PROGRAM: If proposal is to deepen or plug back, give data on present productive zone and proposed productive zone. If proposal is to drill or deepen directionally, give pertinent data on subsurface location and measured and true stratigraphic depth of blowout preventer program, if any.

24.

SIGNED

TITLE

Production Coordinator

(This space for Federal or State office use)

(Orig. Sgd.) GEORGE H. STEWART

PERMIT NO.

APPROVAL DATE

APPROVED BY

TITLE

CONDITIONS OF APPROVAL, IF ANY:

\*See Instructions On Reverse Side

5. LEASE DESIGNATION AND SERIAL NO.  
L.C. 5672111

6. INDIAN ALLOTTEE OR TRIBAL NAME  
NICHOLS-Dale

7. AGREEMENT NAME  
NICHOLS-Dale

8. OR LEASE NAME  
NICHOLS-Dale

9. SURVEY AREA  
NICHOLS-Dale

10. COUNTY OR PARISH  
Chaves

11. STATE  
NM

12. NO. OF ACRES ASSIGNED TO THIS WELL  
180

13. NO. OF ACRES IN LEASE  
600

14. PROPOSED DATE WHEN WELL START\*  
October 20, 1982

15. PROPOSED DATE WHEN WELL START\*  
October 20, 1982

16. PROPOSED DATE WHEN WELL START\*  
October 20, 1982

17. PROPOSED DATE WHEN WELL START\*  
October 20, 1982

18. PROPOSED DATE WHEN WELL START\*  
October 20, 1982

19. PROPOSED DATE WHEN WELL START\*  
October 20, 1982

20. PROPOSED DATE WHEN WELL START\*  
October 20, 1982

21. PROPOSED DATE WHEN WELL START\*  
October 20, 1982

22. PROPOSED DATE WHEN WELL START\*  
October 20, 1982

23. PROPOSED DATE WHEN WELL START\*  
October 20, 1982

24. PROPOSED DATE WHEN WELL START\*  
October 20, 1982

25. PROPOSED DATE WHEN WELL START\*  
October 20, 1982

26. PROPOSED DATE WHEN WELL START\*  
October 20, 1982

27. PROPOSED DATE WHEN WELL START\*  
October 20, 1982

28. PROPOSED DATE WHEN WELL START\*  
October 20, 1982

29. PROPOSED DATE WHEN WELL START\*  
October 20, 1982

30. PROPOSED DATE WHEN WELL START\*  
October 20, 1982

31. PROPOSED DATE WHEN WELL START\*  
October 20, 1982

32. PROPOSED DATE WHEN WELL START\*  
October 20, 1982

33. PROPOSED DATE WHEN WELL START\*  
October 20, 1982

34. PROPOSED DATE WHEN WELL START\*  
October 20, 1982

35. PROPOSED DATE WHEN WELL START\*  
October 20, 1982

36. PROPOSED DATE WHEN WELL START\*  
October 20, 1982

37. PROPOSED DATE WHEN WELL START\*  
October 20, 1982

38. PROPOSED DATE WHEN WELL START\*  
October 20, 1982

39. PROPOSED DATE WHEN WELL START\*  
October 20, 1982

40. PROPOSED DATE WHEN WELL START\*  
October 20, 1982

41. PROPOSED DATE WHEN WELL START\*  
October 20, 1982

42. PROPOSED DATE WHEN WELL START\*  
October 20, 1982

43. PROPOSED DATE WHEN WELL START\*  
October 20, 1982

44. PROPOSED DATE WHEN WELL START\*  
October 20, 1982

45. PROPOSED DATE WHEN WELL START\*  
October 20, 1982

46. PROPOSED DATE WHEN WELL START\*  
October 20, 1982

47. PROPOSED DATE WHEN WELL START\*  
October 20, 1982

48. PROPOSED DATE WHEN WELL START\*  
October 20, 1982

49. PROPOSED DATE WHEN WELL START\*  
October 20, 1982

50. PROPOSED DATE WHEN WELL START\*  
October 20, 1982

51. PROPOSED DATE WHEN WELL START\*  
October 20, 1982

52. PROPOSED DATE WHEN WELL START\*  
October 20, 1982

53. PROPOSED DATE WHEN WELL START\*  
October 20, 1982

54. PROPOSED DATE WHEN WELL START\*  
October 20, 1982

55. PROPOSED DATE WHEN WELL START\*  
October 20, 1982

56. PROPOSED DATE WHEN WELL START\*  
October 20, 1982

57. PROPOSED DATE WHEN WELL START\*  
October 20, 1982

58. PROPOSED DATE WHEN WELL START\*  
October 20, 1982

59. PROPOSED DATE WHEN WELL START\*  
October 20, 1982

60. PROPOSED DATE WHEN WELL START\*  
October 20, 1982

61. PROPOSED DATE WHEN WELL START\*  
October 20, 1982

62. PROPOSED DATE WHEN WELL START\*  
October 20, 1982

63. PROPOSED DATE WHEN WELL START\*  
October 20, 1982

64. PROPOSED DATE WHEN WELL START\*  
October 20, 1982

65. PROPOSED DATE WHEN WELL START\*  
October 20, 1982

66. PROPOSED DATE WHEN WELL START\*  
October 20, 1982

67. PROPOSED DATE WHEN WELL START\*  
October 20, 1982

68. PROPOSED DATE WHEN WELL START\*  
October 20, 1982

69. PROPOSED DATE WHEN WELL START\*  
October 20, 1982

70. PROPOSED DATE WHEN WELL START\*  
October 20, 1982

71. PROPOSED DATE WHEN WELL START\*  
October 20, 1982

72. PROPOSED DATE WHEN WELL START\*  
October 20, 1982

73. PROPOSED DATE WHEN WELL START\*  
October 20, 1982

74. PROPOSED DATE WHEN WELL START\*  
October 20, 1982

75. PROPOSED DATE WHEN WELL START\*  
October 20, 1982

76. PROPOSED DATE WHEN WELL START\*  
October 20, 1982

77. PROPOSED DATE WHEN WELL START\*  
October 20, 1982

78. PROPOSED DATE WHEN WELL START\*  
October 20, 1982

79. PROPOSED DATE WHEN WELL START\*  
October 20, 1982

80. PROPOSED DATE WHEN WELL START\*  
October 20, 1982

81. PROPOSED DATE WHEN WELL START\*  
October 20, 1982

82. PROPOSED DATE WHEN WELL START\*  
October 20, 1982

83. PROPOSED DATE WHEN WELL START\*  
October 20, 1982

84. PROPOSED DATE WHEN WELL START\*  
October 20, 1982

85. PROPOSED DATE WHEN WELL START\*  
October 20, 1982

86. PROPOSED DATE WHEN WELL START\*  
October 20, 1982

87. PROPOSED DATE WHEN WELL START\*  
October 20, 1982

88. PROPOSED DATE WHEN WELL START\*  
October 20, 1982

89. PROPOSED DATE WHEN WELL START\*  
October 20, 1982

90. PROPOSED DATE WHEN WELL START\*  
October 20, 1982

91. PROPOSED DATE WHEN WELL START\*  
October 20, 1982

92. PROPOSED DATE WHEN WELL START\*  
October 20, 1982

93. PROPOSED DATE WHEN WELL START\*  
October 20, 1982

94. PROPOSED DATE WHEN WELL START\*  
October 20, 1982

95. PROPOSED DATE WHEN WELL START\*  
October 20, 1982

96. PROPOSED DATE WHEN WELL START\*  
October 20, 1982

97. PROPOSED DATE WHEN WELL START\*  
October 20, 1982

98. PROPOSED DATE WHEN WELL START\*  
October 20, 1982

99. PROPOSED DATE WHEN WELL START\*  
October 20, 1982

100. PROPOSED DATE WHEN WELL START\*  
October 20, 1982

Post FD-1  
10-22-E2  
APE & BK

NEW MEXICO OIL CONSERVATION COMMISSION  
WELL LOCATION AND ACREAGE DEDICATION PLAT

Form C-102  
Supersedes C-128  
Effective 1-1-65

All distances must be from the outer boundaries of the Section

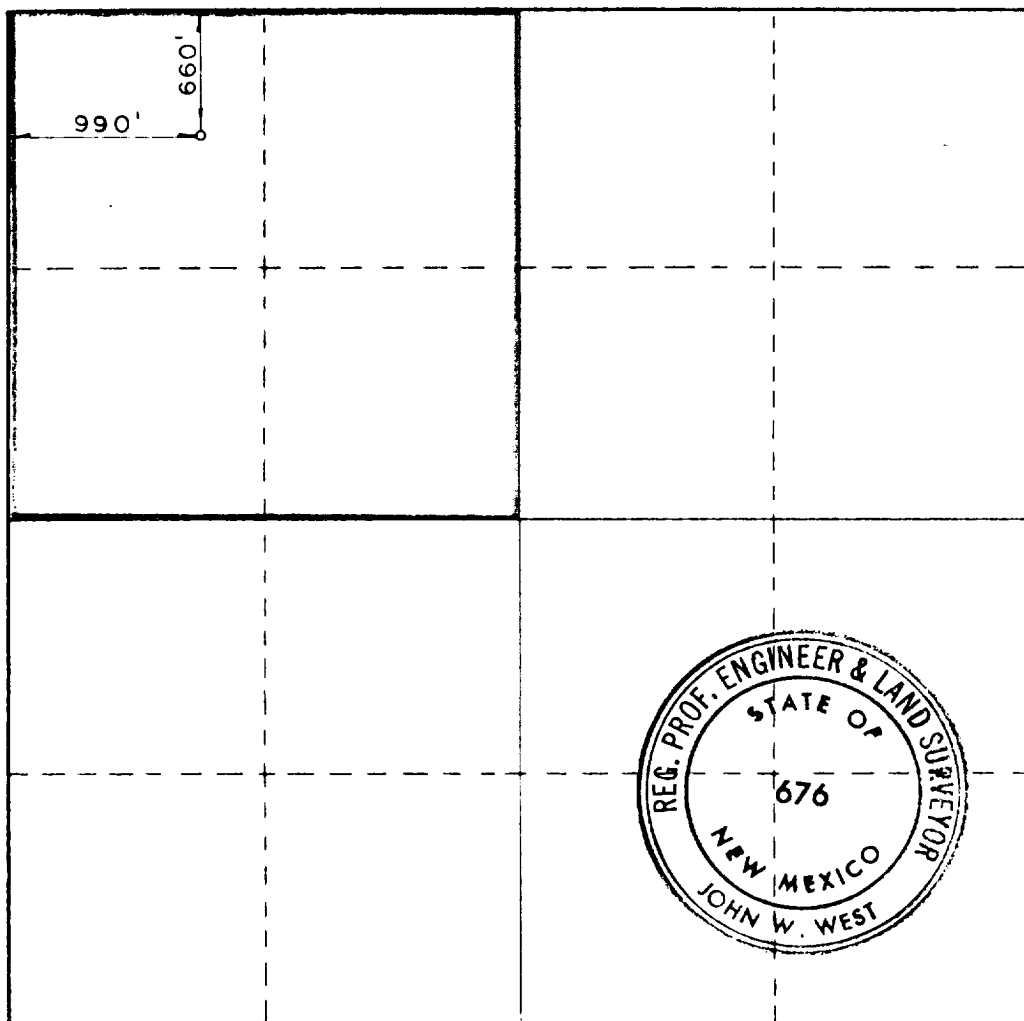
Operator <b>STEVENS OPERATING CO.</b>			Lease <b>NICHOLS-DALE FED.</b>		Well No. <b>1</b>
Unit Letter <b>D</b>	Section <b>33</b>	Township <b>7 S</b>	Range <b>26 E</b>	County <b>CHAVES</b>	
Actual Footage Location of Well: <b>660'</b> feet from the <b>NORTH</b> line and <b>990'</b> feet from the <b>WEST</b> line					
Ground Level Elev. <b>3699.2</b>	Producing Formation <b>Abo</b>		Pool <b>Pecos-Slope</b>	Dedicated Acreage: <b>160</b> Acres	

1. Outline the acreage dedicated to the subject well by colored pencil or hatchure marks on the plat below.
2. If more than one lease is dedicated to the well, outline each and identify the ownership thereof (both as to working interest and royalty).
3. If more than one lease of different ownership is dedicated to the well, have the interests of all owners been consolidated by communitization, unitization, force-pooling, etc?

☐ Yes ☐ No If answer is "yes," type of consolidation \_\_\_\_\_

If answer is "no," list the owners and tract descriptions which have actually been consolidated. (Use reverse side of this form if necessary.) \_\_\_\_\_

No allowable will be assigned to the well until all interests have been consolidated (by communitization, unitization, forced-pooling, or otherwise) or until a non-standard unit, eliminating such interests, has been approved by the Commission.



CERTIFICATION

I hereby certify that the information contained herein is true and complete to the best of my knowledge and belief.

Name  
**Pat Thompson**  
Position  
**Production Coordinator**  
Company  
**STEVENS OPERATING CORPORATION**

Date  
**October 11, 1982**

I hereby certify that the well location shown on this plat was plotted from field notes of actual surveys made by me or under my supervision, and that the same is true and correct to the best of my knowledge and belief.

Date Surveyed  
**OCTOBER 7, 1982**

Registered Professional Engineer and/or Land Surveyor

Certificate No. **JOHN W. WEST 676**  
**PATRICK A. ROMERO 6663**  
**Ronald J. Eidson 3239**

0 330 660 990 1320 1650 1980 2310 2640 2970 3300 3630 3960 4290 4620 4950 5280 5610 5940 6270 6600

SUPPLEMENTAL DRILLING DATA

STEVENS OPERATING CORPORATION  
WELL #1 NICHOLS-DALE FEDERAL  
660' FNL, 990' FWL, SEC. 33, T-7-S, R-26-E  
CHAVES COUNTY, NEW MEXICO

1. SURFACE INFORMATION: Permian (Artesia Group).

2. ESTIMATED TOPS OF GEOLOGIC MARKERS:

San Andres	640'	Abo	3890'
Glorietta	1790'		

3. ANTICIPATED POROSITY ZONES:

Water	60'
Oil	640'
Gas	3890'

4. CASING DESIGN:

<u>Size</u>	<u>Interval</u>	<u>Weight</u>	<u>Grade</u>	<u>Joint</u>	<u>Condition</u>
8 5/8"	0 - 700'	24.0#	K-55	STC	New
4 1/2"	0 - 4650'	10.5#	K-55	STC	New

5. SURFACE CONTROL EQUIPMENT: A double ram-type preventer (900 series). A sketch of BOP stack is attached.

6. CIRCULATING MEDIUM:

0 - 700'	Fresh water mud with gel added if needed for viscosity.
700 - TD	Salt water mud, conditioned as necessary for control of viscosity and water loss.

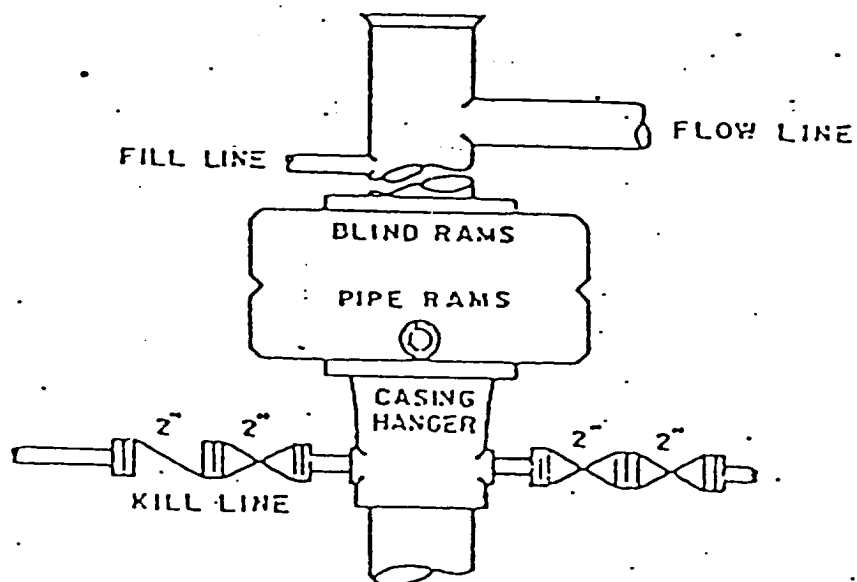
7. AUXILIARY EQUIPMENT: Drill string safety valve.

8. TESTING, LOGGING AND CORING PROGRAMS:

DST's:	As warranted.
Coring:	None planned.
Logging:	A Compensated Neutron/Formation Density Log w/Gamma Ray and a Dual Laterolog/Mirco-Spherically Focused Log.

9. ABNORMAL PRESSURES, TEMPERATURES OR GASES: None anticipated.

10. ANTICIPATED DATES: It is planned that drilling operations will commence about October 20, 1982. Duration of drilling and completion operations should be 20 to to 60 days.



# DUAL RAM-TYPE PREVENTER

900 Series

## Blowout Preventer Sketch

Stevens Operating Corporation  
 Well #1 Nichols-Dale Federal  
 660' FNL, 990' FWL, SEC. 33, T-7-S, R-26-E  
 Chaves County, New Mexico

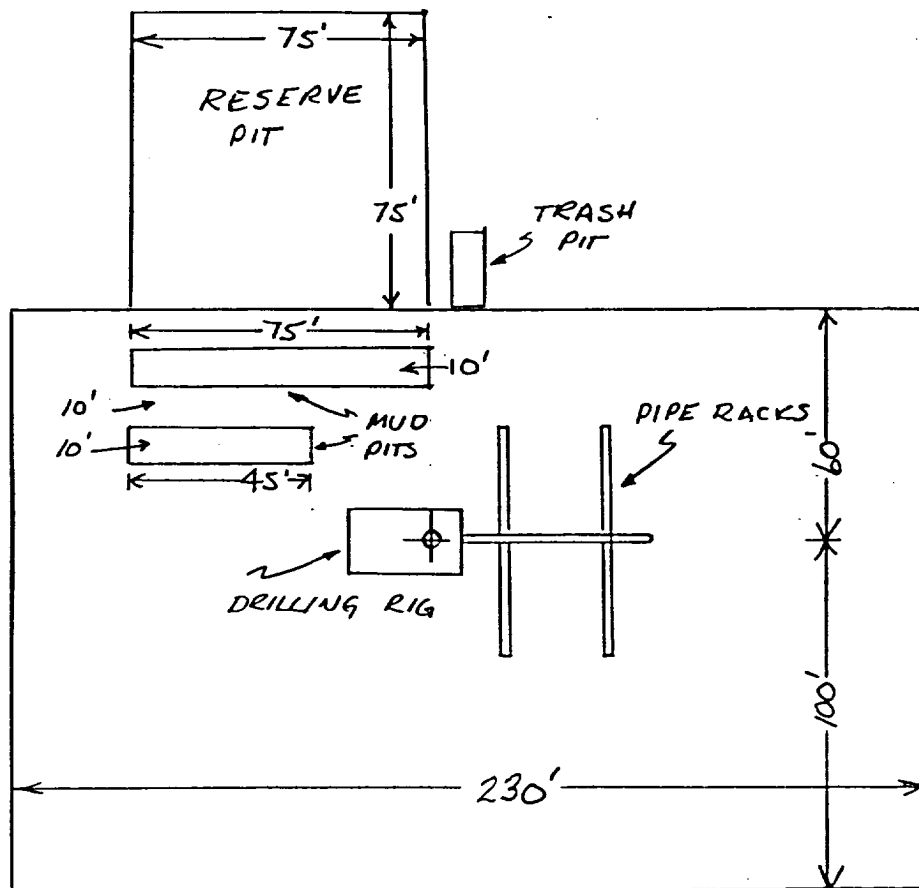


EXHIBIT "D"

SKETCH OF WELL PAD

STEVENS OPERATING CORPORATION  
 WELL #1 NICHOLS-DALE FEDERAL  
 660' FNL, 990' FWL, SEC. 33, T-7-S, R-26-E  
 CHAVES COUNTY, NEW MEXICO

SURFACE AGREEMENT FOR THE W<sup>1</sup>/<sub>2</sub> OF SECTION 33, T-7-S, R-26-E

CHAVES COUNTY, NEW MEXICO

Records show that the above described tract of land is owned as follows:

Surface:

Mr. R. L. Durham  
Clovis Star Route  
P. O. Box 1235  
Roswell, New Mexico 88201

Minerals:

U. S. Government.

Oil & Gas Lease:

R. L. Dale & The Estate of E. E. Nichols

Designation of Operator:

Stevens Operating Corporation

This is to advise that Stevens has made an agreement with Mr. Durham for the use of existing access roads to the proposed drilling location and for the construction and use of the proposed new road and wellsite along with associated pits. Upon abandonment, the pits will be filled and the location cleaned. No stipulations were made by Mr. Durham requiring surface restoration of the road or well pad areas.

Oct. 2, 1952  
Date

John V. Walker  
John V. Walker  
STEVENS OPERATING CORPORATION

EXHIBIT "E"

SURFACE AGREEMENT

STEVENS OPERATING CORPORATION  
WELL #1 NICHOLS-DALE FEDERAL  
660' FNL, 990' FWL, SEC. 33, T-7-S, R-26-E  
CHAVES COUNTY, NEW MEXICO

