

30-005-41918

*C/S*

UNITED STATES DEPARTMENT OF THE INTERIOR  
GEOLOGICAL SURVEY

APPLICATION FOR PERMIT TO DRILL, DEEPEN, OR PLUG BACK

1a. TYPE OF WORK  
 DRILL  DEEPEN  PLUG BACK

b. TYPE OF WELL  
 OIL WELL  GAS WELL  OTHER

2. NAME OF OPERATOR  
 Yates Petroleum Corporation ✓

3. ADDRESS OF OPERATOR  
 207 S. 4th, Artesia, New Mexico 88210 C. D.

4. LOCATION OF WELL (Report location clearly and in accordance with any State requirements)  
 At surface 1980' FNL and 660' FWL  
 At proposed prod. zone same

14. DISTANCE IN MILES AND DIRECTION FROM NEAREST TOWN OR POST OFFICE\*  
 16 miles ENE of Roswell, New Mexico.

15. DISTANCE FROM PROPOSED\* PROPERTY TO NEAREST PROPERTY OR LEASE LINE, FT. (Also to nearest drlg. unit line, if any)  
 660'

16. NO. OF ACRES IN LEASE  
 1920

17. NO. OF ACRES ASSIGNED TO THIS WELL  
 160

18. DISTANCE FROM PROPOSED\* LOCATION TO NEAREST WELL, DRILLING COMPLETED, OR APPLIED FOR, ON THIS LEASE, FT.  
 4850'

20. ROTARY OR CABLE TOOLS  
 Rotary

21. ELEVATIONS (Show whether DF, RT, GR, etc.)  
 3715.' GL

22. APPROX. DATE WORK WILL START\*  
 ASAP

RECEIVED  
JAN 18 1983

5. LEASE DESIGNATION AND SERIAL NO.  
 NM-18031

6. IF INDIAN, ALLOTTEE OR TRIBE NAME

7. UNIT AGREEMENT NAME

8. FARM OR LEASE NAME  
 Huckabay "TJ" Federal

9. WELL NO.  
 4

10. FIELD AND POOL, OR WILDCAT  
 Undes. ~~Pecos Slope~~ Abo

11. SEC., T., R., M., OR BLK. AND SURVEY OR AREA  
 Sec. 20-T8S-R26E

12. COUNTY OR PARISH  
 Chaves

13. STATE  
 NM

*W E*

PROPOSED CASING AND CEMENTING PROGRAM

| SIZE OF HOLE | SIZE OF CASING | WEIGHT PER FOOT | SETTING DEPTH | QUANTITY OF CEMENT |
|--------------|----------------|-----------------|---------------|--------------------|
| 14 3/4"      | 10 3/4"        | 40.5# J-55      | 925'          | 600 sx circulated  |
| 7 7/8"       | 4 1/2"         | 9.5#            | TD            | 350 sx             |

We propose to drill and test the Abo and intermediate formations. Approximately 925' of surface casing will be set and cement circulated to shut off gravel and caving. If needed (lost circulation) 8 5/8" intermediate casing will be run to 1500' and cemented with enough cement calculated to tie back into the surface casing. If commercial, production casing will be run and cemented with adequate cover, perforated, and stimulated as needed for production.

MUD PROGRAM: FW gel/LCM to 925', Brine to 3200', Brine/KCL water to TD.

BOP PROGRAM: BOP's will be installed at the offset and tested daily.

GAS NOT DEDICATED.

*Posted by [unclear] 1-21-83*

IN ABOVE SPACE DESCRIBE PROPOSED PROGRAM: If proposal is to deepen or plug back, give data on present productive zone and proposed new productive zone. If proposal is to drill or deepen directionally, give pertinent data on subsurface locations and measured and true vertical depths. Give blowout preventer program, if any.

SIGNED Cy Cowan TITLE Regulatory Coordinator DATE 12/29/82

(This space for Federal or State office use)  
 APPROVED (Orig. Sgd.) GEORGE H. STEWART

PERMIT NO. \_\_\_\_\_ APPROVAL DATE \_\_\_\_\_

APPROVED BY \_\_\_\_\_ TITLE \_\_\_\_\_  
 CONDITIONS OF APPROVAL, IF ANY:  
 JAMES A. GILHAM  
 DISTRICT SUPERVISOR

JAN 14 1983

RECEIVED  
JAN 4 1983

NEW MEXICO OIL CONSERVATION COMMISSION  
WELL LOCATION AND ACREAGE DEDICATION PLAT

Form C-102  
Supersedes C-128  
Effective 1-1-65

All distances must be from the outer boundaries of the Section.

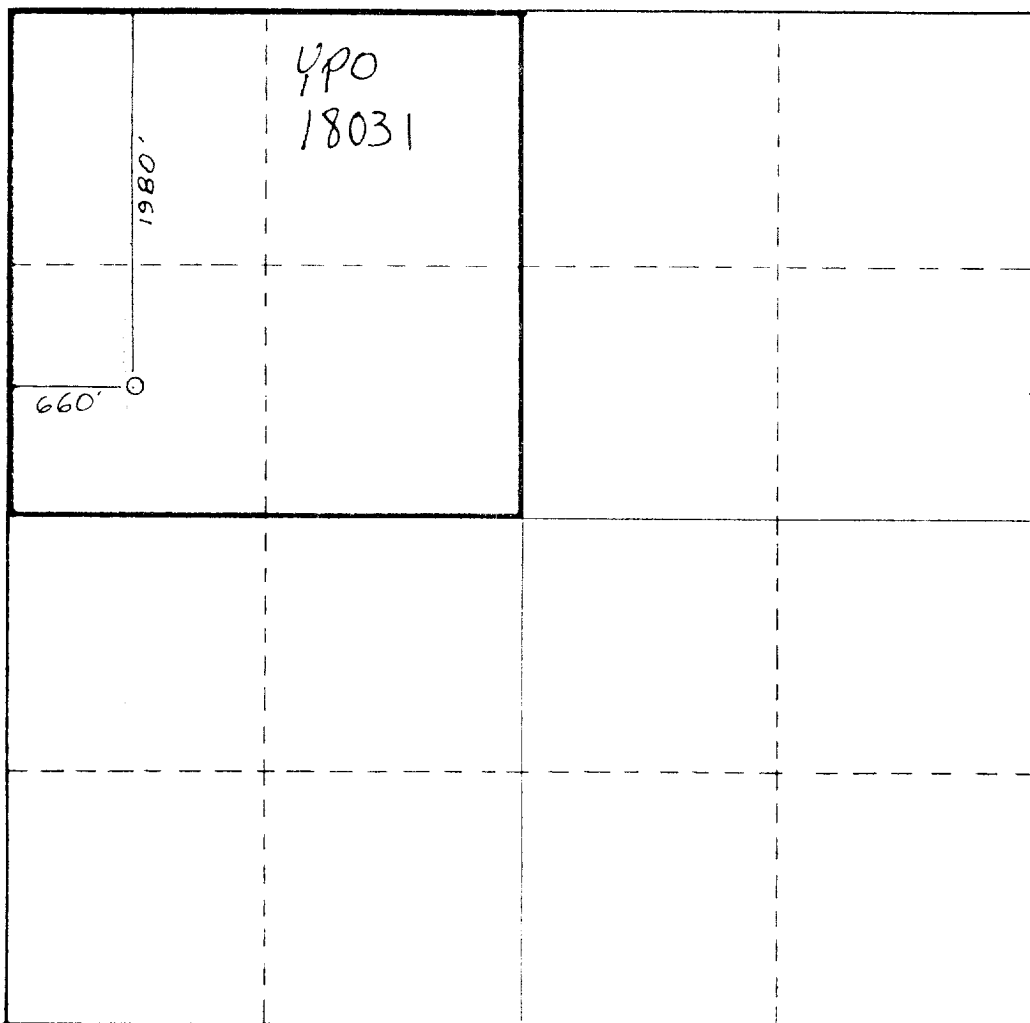
|   |                                   |   |  |                         |
|---|-----------------------------------|---|--|-------------------------|
| Operator<br><b>YATES PETROLEUM CORPORATION</b>  |                                   | Lease<br><b>Huckabay TJ Federal</b>       |  | Well No.<br><b>4</b>    |
| Grid Letter<br><b>E</b>                         | Section<br><b>20</b>              | Township<br><b>8 South</b>                | Range<br><b>26 East</b>                | County<br><b>Chaves</b> |
| Actual Footage Location of Well:                |                                   |   |  |                         |
| <b>1980</b> feet from the <b>North</b> line and |                                   | <b>660</b> feet from the <b>West</b> line |  |                         |
| Ground Level Elev.<br><b>3715.</b>              | Producing Formation<br><b>Abo</b> | Pool<br><b>Undes. Pecos Slope Abo</b>     | Dedicated Acreage:<br><b>160</b> Acres |                         |

1. Outline the acreage dedicated to the subject well by colored pencil or hachure marks on the plat below.
2. If more than one lease is dedicated to the well, outline each and identify the ownership thereof (both as to working interest and royalty).
3. If more than one lease of different ownership is dedicated to the well, have the interests of all owners been consolidated by communitization, unitization, force-pooling, etc?

Yes  No If answer is "yes," type of consolidation \_\_\_\_\_

If answer is "no," list the owners and tract descriptions which have actually been consolidated. (Use reverse side of this form if necessary.) \_\_\_\_\_

No allowable will be assigned to the well until all interests have been consolidated (by communitization, unitization, forced-pooling, or otherwise) or until a non-standard unit, eliminating such interests, has been approved by the Commission.



CERTIFICATION

*I hereby certify that the information contained herein is true and complete to the best of my knowledge and belief.*

*Cy Cowan*

Name

**Cy Cowan**

Position

**Regulatory Coordinator**

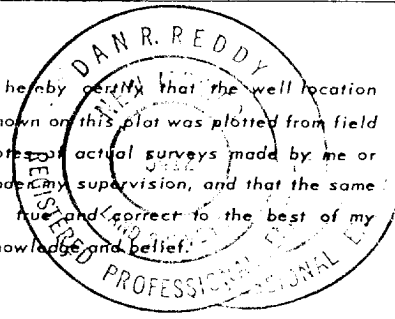
Company

**Yates Petroleum Corp.**

Date

**12/29/82**

*I hereby certify that the well location shown on this plat was plotted from field notes of actual surveys made by me or under my supervision, and that the same is true and correct to the best of my knowledge and belief.*



Date Surveyed

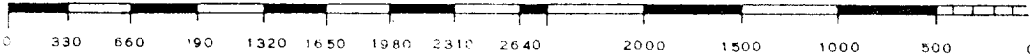
**December 23, 1982**

Registered Professional Engineer  
and/or Land Surveyor

*Dan R. Reddy*

Certificate No.

**NM PE&LS #5412**



YATES PETROLEUM CORPORATION  
uckabay "TJ" Federal #4  
1980' FNL and 660' FWL  
Sec. 20-T8S-R26E

In conjunction with Form 9-331C, Application for Permit to Drill subject well, Yates Petroleum Corporation submits the following ten items of pertinent information in accordance with USGS requirements.

1. The geologic surface formation is sandy alluvium.

2. The estimated tops of geologic markers are as follows:

|                   |              |
|-------------------|--------------|
| <u>San Andres</u> | <u>803'</u>  |
| <u>Glorieta</u>   | <u>2000'</u> |
| <u>Fullerton</u>  | <u>3477'</u> |
| <u>Abo</u>        | <u>4213'</u> |
| <u>TD</u>         | <u>4850'</u> |

3. The estimated depths at which anticipated water, oil or gas formations are expected to be encountered:

Water: Approximately 260'-330'

Oil or Gas: Abo 4250'

4. Proposed Casing Program: See Form 9-331C.

5. Pressure Control Equipment: See Form 9-331C and Exhibit B.

6. Mud Program: See Form 9-331C.

7. Auxiliary Equipment: Kelly Cock; pit level indicators and flow sensor equipment;  
sub with full-opening valve on floor, drill pipe connection.

8. Testing, Logging and Coring Program:

Samples: Surface casing to TD.

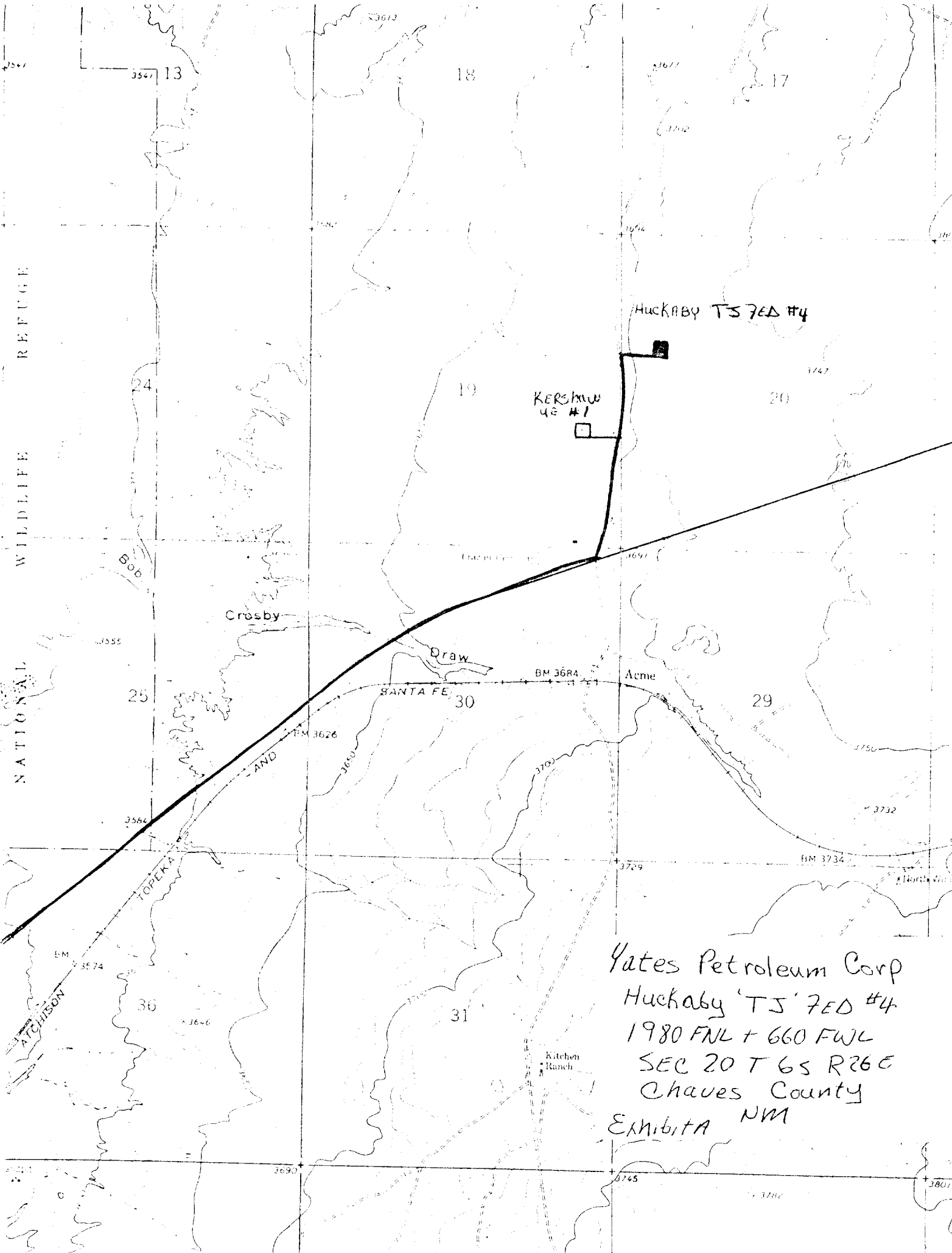
DST's: As warranted

Coring: None

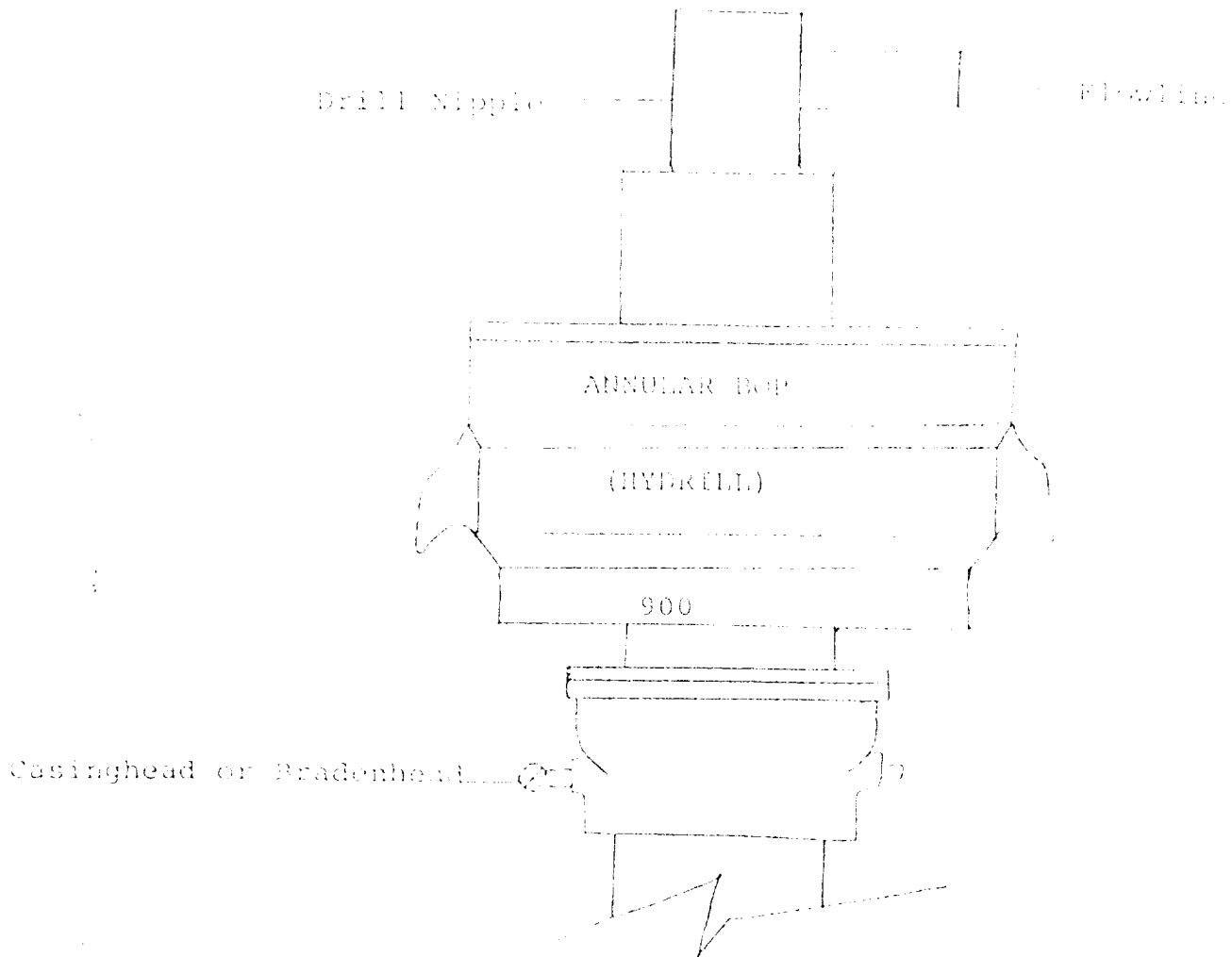
Logging: CNL-FDC TD to csg w/GR-CNL to surface & DLL from TD to csg

9. No abnormal pressures or temperatures are anticipated.

10. Anticipated starting date: As soon as possible after approval.



Yates Petroleum Corp  
Huckaby 'TS' 7ED #4  
1980 FNL + 660 FWL  
SEC 20 T 6 S R 26 E  
Chaves County  
EXHIBIT A NM



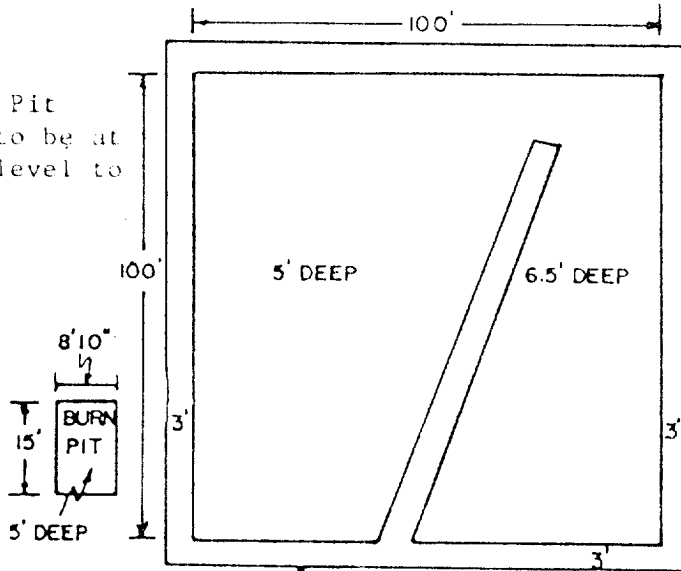
THE FOLLOWING CONSTITUTE MINIMUM BLOWOUT PREVENTER REQUIREMENTS

1. All preventers to be hydraulically operated with secondary manual controls installed prior to drilling out from under casing.
2. All connections from operating manifolds to preventers to be all steel. Hole or tube a minimum of one inch in diameter.
3. The available closing pressure shall be at least 15% in excess of that required with sufficient volume to operate the BOP's.
4. All connections to and from preventer to have a pressure rating equivalent to that of the BOP's.
5. Hole must be kept filled on trips below intermediate casing.

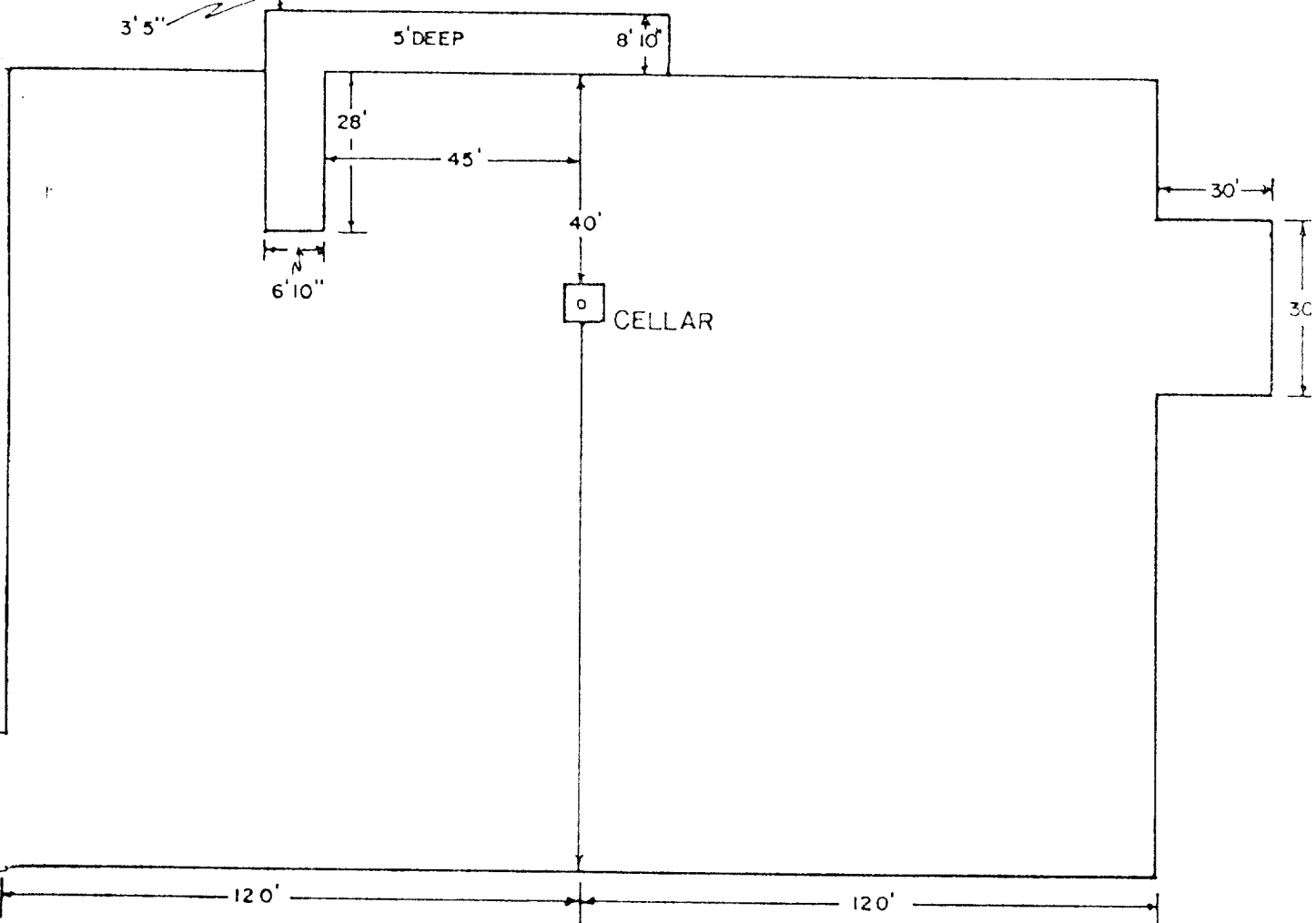
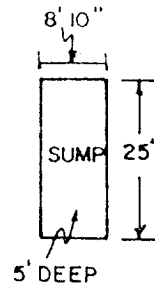
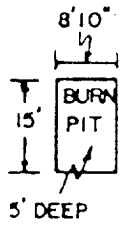
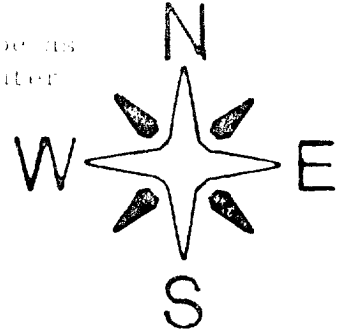
# YATES PETROLEUM CORP.

## Exhibit C

Reserve Pit  
bottom to be at  
ground level to  
1 ft.



NOTE:  
Inside walls must be as  
high and wide as outer  
walls of pit.





207 SOUTH FOURTH STREET  
ARTESIA, NEW MEXICO 88210

TELEPHONE (505) 748-1331

S. P. YATES  
PRESIDENT  
MARTIN YATES, III  
VICE PRESIDENT  
JOHN A. YATES  
VICE PRESIDENT  
B. W. HARPER  
SEC. TREAS.

December 29, 1982

Mr. George Stewart  
Minerals Management Service  
Federal Building  
Roswell, New Mexico 88201


Re: Huckabay "TJ" Federal #4

Dear Mr. Stewart,

Yates Petroleum Corporation is submitting an application to drill a well on surface patented to Mr. Carl Cooper, P. O. Box 22, Roswell, New Mexico 88201. This well will be located 1980' FNL and 660' FWL of Section 20-T8S-R26E in Chaves County.

In a conversation with Mr. Cooper, it was agreed that we would compensate him monetarily for the surface damaged in drilling this well. Also, that in the event of a dry hole, we would rip the road. The pit area will be leveled after it is dry and along with the pad will be left to reseed naturally.

Sincerely,

  
Cy Cowan  
Regulatory Coordinator  
YATES PETROLEUM CORPORATION

CC/dw