

RECEIVED BY
UNITED STATES
DEPARTMENT OF THE INTERIOR
GEOLOGICAL SURVEY
APR 29 1985
ARTESIA, OFFICESUBMIT IN ' LICATE*
(Other instructions on
reverse side)Form approved.
Budget Bureau No. 42-R1425.

30-005-63264

APPLICATION FOR PERMIT TO DRILL, DEEPEN, OR PLUG BACK

1a. TYPE OF WORK

DRILL ☒DEEPEN ☐PLUG BACK ☐

b. TYPE OF WELL

OIL ☐GAS ☒

OTHER

SINGLE ☐MULTIPLE ☐

2. NAME OF OPERATOR

Yates Petroleum Corporation ✓

3. ADDRESS OF OPERATOR

207 South Fourth Street - Artesia, NM 88210

4. LOCATION OF WELL (Report location clearly and in accordance with any State requirements.)*

At surface

1980' FNL & 660' FEL (Unit H)

At proposed prod. zone

Same

14. DISTANCE IN MILES AND DIRECTION FROM NEAREST TOWN OR POST OFFICE*

16 miles ENE of Roswell, New Mexico

15. DISTANCE FROM PROPOSED*

LOCATION TO NEAREST

PROPERTY OR LEASE LINE, FT.

(Also to nearest dril unit line, if any)

660'

18. DISTANCE FROM PROPOSED LOCATION*

TO NEAREST WELL, CILING, COMPLETED,
OR APPLIED FOR, ON THIS LEASE, FT.

16. NO. OF ACRES IN LEASE

19. PROPOSED DEPTH

4200'

17. NO. OF ACRES ASSIGNED
TO THIS WELL

160

20. ROTARY OR CABLE TOOLS

Rotary

21. ELEVATIONS (Show whether DF, RT, GR, etc.)

3583' GR

22. APPROX. DATE WORK WILL START*

ASAP

23.

PROPOSED CASING AND CEMENTING PROGRAM

SIZE OF HOLE	SIZE OF CASING	WEIGHT PER FOOT	SETTING DEPTH	QUANTITY OF CEMENT
14-3/4"	10-3/4"	40.5# K-55	900'	650 sacks - circulate
7-7/8"	4-1/2"	9.5# K-55	4200'	450 sacks

We propose to drill and test the Abo and intermediate formations. Approximately 900' of surface casing will be set and cement circulated to shut off gravel and cavings. If needed for lost circulation 8-5/8" intermediate casing will be run to 1500' and cemented with enough cement calculated to tie back into the surface casing. A temperature survey will be run to determine cement top. If commercial, production casing will be run and cemented with adequate cover, perforated and stimulated as needed for production.

MUD PROGRAM: FW gel & LCM to 900'; brine to 3200'; brine and KCL water to TD

BOP PROGRAM: BOP's will be installed at the offset and tested daily.

GAS NOT DEDICATED

IN ABOVE SPACE DESCRIBE PROPOSED PROGRAM: If proposal is to deepen or plug back, give data on present productive zone and proposed new productive zone. If proposal is to drill or deepen directionally, give pertinent data on subsurface locations and measured and true vertical depths. Give blowout preventer program, if any.

24.

SIGNED

Clifton May

TITLE

Regulatory Agent

DATE April 1, 1985

PERMIT NO.

APPROVAL DATE

S/Phil Kirk

Area Manager

APR 2 1985

DATE 4.26.85

APPROVED BY

CONDITIONS OF APPROVAL, IF ANY:

Posted ID1
API & NL
5-3-85

NEW MEXICO OIL CONSERVATION COMMISSION
WELL LOCATION AND ACREAGE DEDICATION PLAT

Form C-102
Supersedes C-128
Effective 1-1-65

All distances must be from the outer boundaries of the Section.

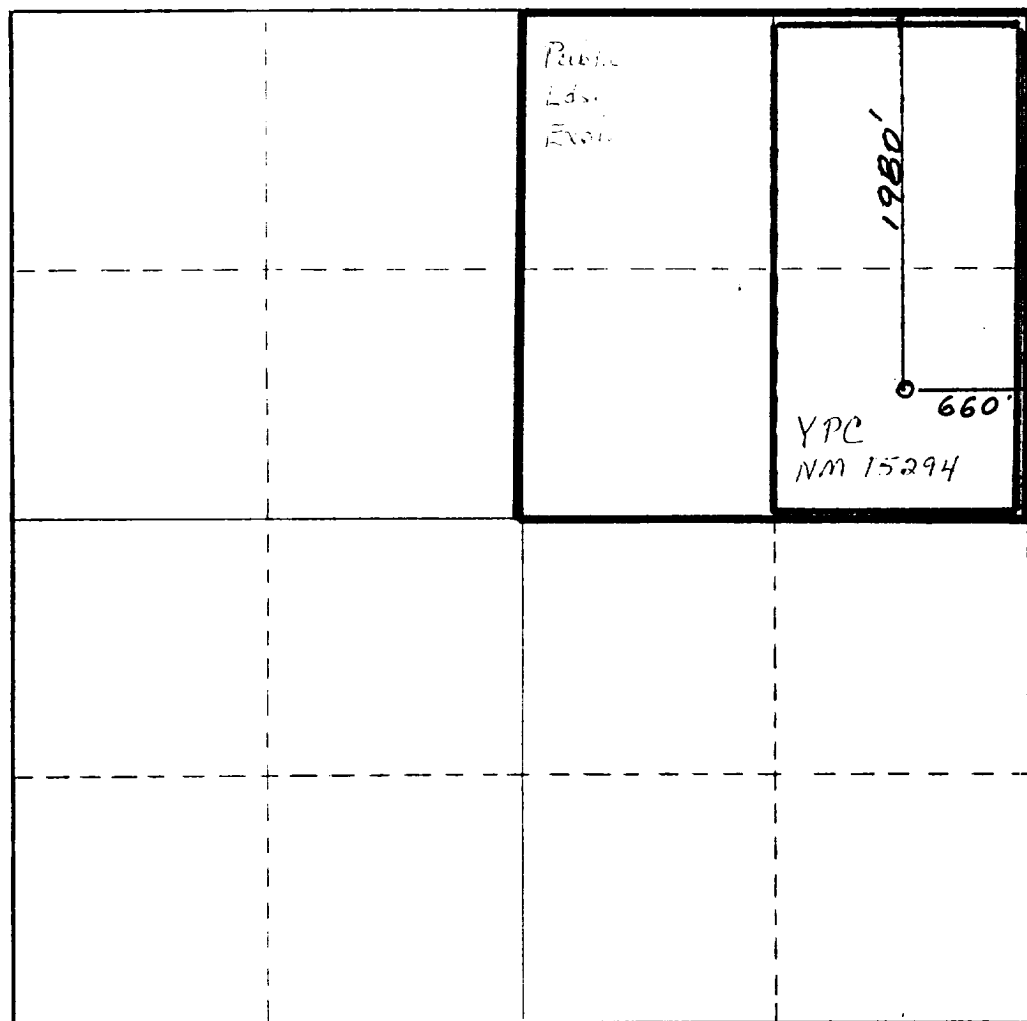
Operator YATES PETROLEUM CORPORATION			Lease Bosque Grande SQ Federal		Well No. 42
Unit Letter H	Section 17	Township 7 South	Range 26 East	County Chaves	
Actual Footage Location of Well: 1980 feet from the North line and 660 feet from the East line					
Ground Level Elev. 3583.	Producing Formation Abo		Pool UNDES. PECAS SLOPE Abo		Dedicated Acreage: 160 Acres

- Outline the acreage dedicated to the subject well by colored pencil or hachure marks on the plat below.
- If more than one lease is dedicated to the well, outline each and identify the ownership thereof (both as to working interest and royalty).
- If more than one lease of different ownership is dedicated to the well, have the interests of all owners been consolidated by communitization, unitization, force-pooling, etc?

☒ Yes ☐ No If answer is "yes," type of consolidation TO BE COMMUNITIZED

If answer is "no," list the owners and tract descriptions which have actually been consolidated. (Use reverse side of this form if necessary.)

No allowable will be assigned to the well until all interests have been consolidated (by communitization, unitization, forced-pooling, or otherwise) or until a non-standard unit, eliminating such interests, has been approved by the Commission.



CERTIFICATION

I hereby certify that the information contained herein is true and complete to the best of my knowledge and belief.

Clifton May

Name
Clifton May
Position
Regulatory Agent
Company
Yates Petroleum Corp.

Date
April 1, 1985

I hereby certify that the well location shown on this plat was plotted from field notes of actual surveys made by me or under my supervision, and that the same is true and correct to the best of my knowledge and belief.

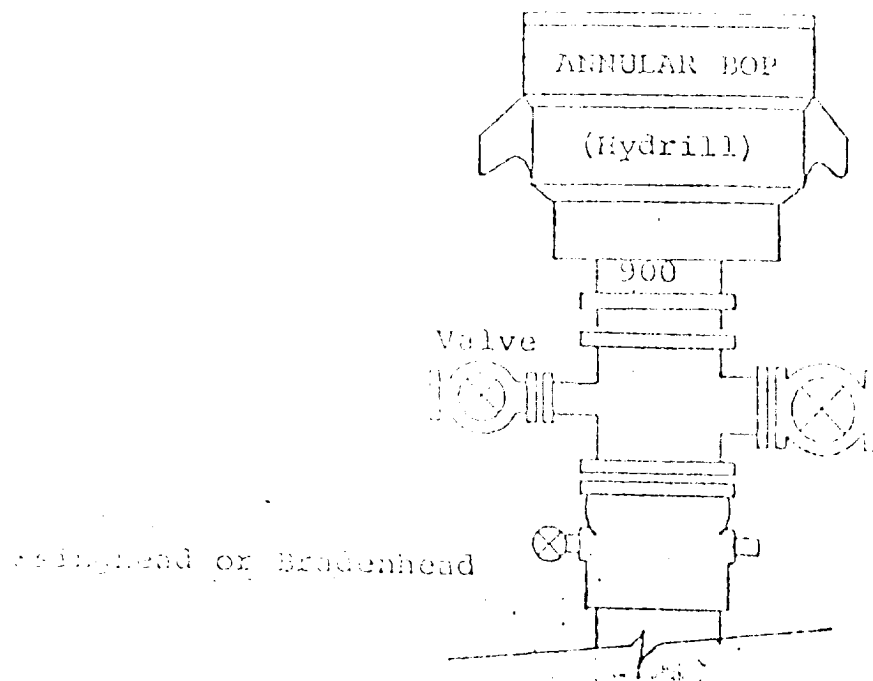
Date Surveyed
February 18, 1985
Registered Professional Engineer and/or Land Surveyor

Don R. Reddy

Certificate No.
NM PE&LS NO. 5412

0 330 660 990 1320 1650 1980 2310 2640 2970 3300 3630 3960 4290 4620 4950 5280 5610 5940 6270 6600

EXHIBIT B
BDP DIAGRAM
RATED 3000[#]



YATES PETROLEUM CORPORATION
Bosque Grande SQ Federal #4
1980' FNL & 660' FEL of
Section 17-7S-26E
Chaves County, New Mexico

In conjunction with Form 9-331C, Application for Permit to Drill subject well, Yates Petroleum Company submits the following ten items of pertinent information in accordance with BLM requirements.

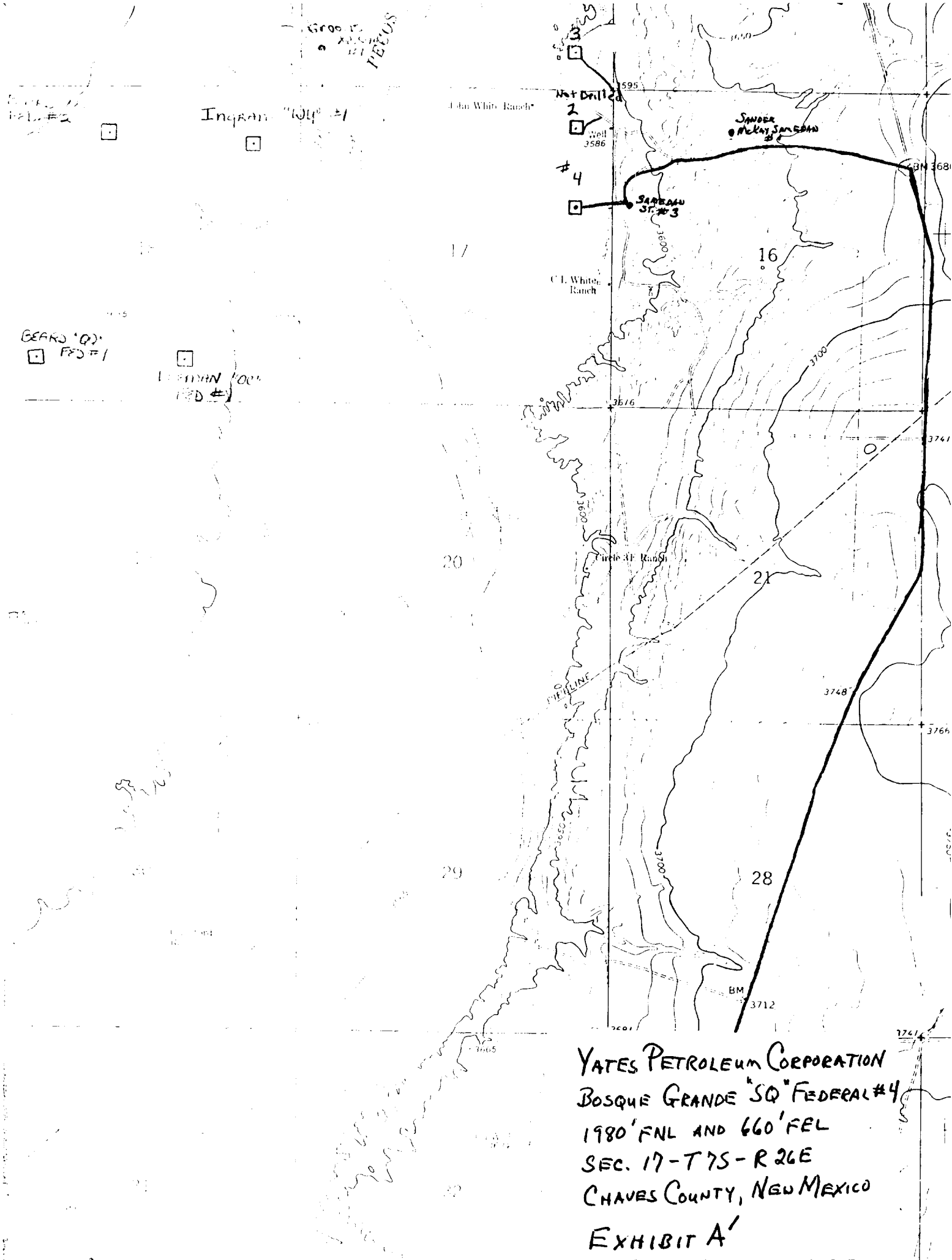
1. The geologic surface formation is sandy alluvium.
2. The estimated tops of geologic markers are as follows:

San Andres	470'
Glorieta	1481'
Fullerton	2963'
Abo	3658'
TD	4200'
3. The estimated depths at which anticipated water, oil or gas formations are expected to be encountered:

Water: Approximately 250-320'

Oil or Gas: Abo - 3685'
4. Proposed Casing Program: See Form 9-331C.
5. Pressure Control Equipment: See Form 9-331C.
6. Mud Program: See Form 9-331C.
7. Auxiliary Equipment: Kelly Cock; pit level indicators and flow sensor equipment; sub with full-opening valve on floor, drill pipe connection.
8. Testing, Logging and Coring Program:

Samples: Surface casing to TD
DST's: As warranted
Coring: As warranted
Logging: CNL-FDC from TD to casing w/GR-CNL on to surface; DLL from TD to casing
9. No abnormal pressures or temperatures are anticipated.
10. Anticipated starting date: As soon as possible after approval.



VALES PETROLEUM CORP.

Exhibit C

