

UNITED STATES

MINERAL CONSERVATION
(Other Instructions)
Drawings

Form approved.
Budget Bureau No. 1004-0135
Expires August 31, 1985

95F

RECEIVED BY

DEPARTMENT OF THE INTERIOR
BUREAU OF LAND MANAGEMENT
Artesia, NM 88210

JUL 11 1985 DRY NOTICES AND REPORTS ON WELLS

(Do not use this form for proposals to drill or to deepen or plug back to a different reservoir.
Use APPLICATION FOR PERMIT—" for such proposals.)

1. **O. C. D.**
WELL ☐ GAS ☐ OTHER ☐

2. NAME OF OPERATOR
Yates Petroleum Corporation

3. ADDRESS OF OPERATOR
207 South 4th St., Artesia, NM 88210

4. LOCATION OF WELL (Report location clearly and in accordance with any State requirements.*
See also space 17 below.)
At surface
660' FNL & 660' FWL, Sec. 35-T6S-R26E

14. PERMIT NO.
15. ELEVATIONS (Show whether DF, RT, GR, etc.)
3802.5' GR

5. LEASE DESIGNATION AND SERIAL NO.
NM 40623
6. IF INDIAN, ALLOTTEE OR TRIBE NAME
7. UNIT AGREEMENT NAME
8. FARM OR LEASE NAME
Mariola ACR Federal Com
9. WELL NO.
1
10. FIELD AND POOL, OR WILDCAT
Und. Pecos Slope Abo
11. SEC., T., R., M., OR BLK. AND
SURVEY OR AREA
Unit D, Sec. 35-6S-26E
12. COUNTY OR PARISH
Chaves
13. STATE
NM

16. Check Appropriate Box To Indicate Nature of Notice, Report, or Other Data

NOTICE OF INTENTION TO:

TEST WATER SHUT-OFF ☐ PULL OR ALTER CASING ☐
FRACTURE TREAT ☐ MULTIPLE COMPLETE ☐
SHOOT OR ACIDIZE ☐ ABANDON* ☐
REPAIR WELL ☐ CHANGE PLANS ☐
(Other) ☐

SUBSEQUENT REPORT OF:

WATER SHUT-OFF ☐ REPAIRING WELL ☐
FRACTURE TREATMENT ☐ ALTERING CASING ☐
SHOOTING OR ACIDIZING ☐ ABANDONMENT* ☐
(Other) Spud Notice ☒
(NOTE: Report results of multiple completion on Well Completion or Recompletion Report and Log form.)

17. DESCRIBE PROPOSED OR COMPLETED OPERATIONS (Clearly state all pertinent details, and give pertinent dates, including estimated date of starting any proposed work. If well is directionally drilled, give subsurface locations and measured and true vertical depths for all markers and zones pertinent to this work.)*

6-29-85. Spudded 14-3/4" hole at 10:45 AM 6-29-85. Notified Chuck Flaherty, BLM, of spud.

18. I hereby certify that the foregoing is true and correct

SIGNED *Janita Roadley*

TITLE Production Supervisor

DATE 7-3-85

(This space for Federal or State office use)

APPROVED BY
CONDITIONS OF APPROVAL, IF ANY:

TITLE

ACCEPTED FOR RECORD
PETER W. CHESTER
DATE

JUL 9 1985

BUREAU OF LAND MANAGEMENT
ROSSELL RESOURCE AREA

*See Instructions on Reverse Side

RECEIVED BY
UNITED STATES
DEPARTMENT OF THE INTERIOR
GEOLOGICAL SURVEY
JUN 17 1985

ARTESIA OFFICE

APPLICATION FOR PERMIT TO DRILL, DEEPEN, OR PLUG BACK

1a. TYPE OF WORK

DRILL ☒DEEPEN ☐PLUG BACK ☐

b. TYPE OF WELL

OIL
WELL ☐GAS
WELL ☒

OTHER

SINGLE
ZONE ☐MULTIPLE
ZONE ☐

2. NAME OF OPERATOR

Yates Petroleum Corporation

3. ADDRESS OF OPERATOR

207 South Fourth Street - Artesia, NM 88210

4. LOCATION OF WELL (Report location clearly and in accordance with any State requirements.)

At surface

660' FNL & 660' FWL

At proposed prod. zone

14. DISTANCE IN MILES AND DIRECTION FROM NEAREST TOWN OR POST OFFICE

Approximately 23 miles northeast of Roswell, New Mexico

15. DISTANCE FROM PROPOSED*

LOCATION TO NEAREST

PROPERTY OR LEASE LINE, FT.

(Also to nearest drlg. unit line, if any)

660'

18. DISTANCE FROM PROPOSED LOCATION*

TO NEAREST WELL, DRILLING, COMPLETED,
OR APPLIED FOR, ON THIS LEASE, FT.

16. NO. OF ACRES IN LEASE

360

19. PROPOSED DEPTH

4550'

17. NO. OF ACRES ASSIGNED
TO THIS WELL

160

20. ROTARY OR CABLE TOOLS

Rotary

21. ELEVATIONS (Show whether DF, RT, GR, etc.)

3802.5' GR

22. APPROX. DATE WORK WILL START*

ASAP

23.

PROPOSED CASING AND CEMENTING PROGRAM

SIZE OF HOLE	SIZE OF CASING	WEIGHT PER FOOT	SETTING DEPTH	QUANTITY OF CEMENT
14-3/4"	10-3/4"	40.5# J-55	925'	750 sacks - circulate
7-7/8"	4-1/2"	9.5#	TD	350 sacks

We propose to drill and test the Abo and intermediate formations. Approximately 925' of surface casing will be set and cement circulated to shut off gravel and cavings. If needed for lost circulation, 7" intermediate casing will be run to 1500' and cemented with enough cement calculated to tie back into the surface casing. If commercial, production casing will be run and cemented with adequate cover, perforated and stimulated as needed for production.

MUD PROGRAM: FW gel/LCM to 925'; brine to 3500'; Brine/KCL water to TD.

BOP PROGRAM: BOP's will be installed at the offset and tested daily.

GAS NOT DEDICATED

IN ABOVE SPACE DESCRIBE PROPOSED PROGRAM: If proposal is to deepen or plug back, give data on present productive zone and proposed new productive zone. If proposal is to drill or deepen directionally, give pertinent data on subsurface locations and measured and true vertical depths. Give blowout preventer program, if any.

24.

SIGNED

Clifton May

TITLE Regulatory Agent

DATE June 3, 1985

(This space for Federal or State office use)

PERMIT NO.

APPROVAL DATE

APPROVED BY

S/Levi Deike, Acting

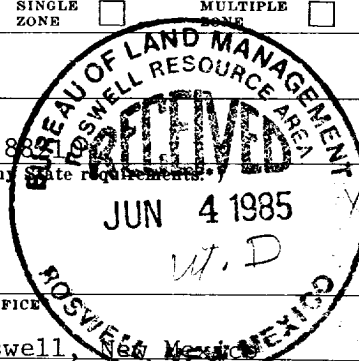
TITLE

Area Manager

DATE

6-14-85

CONDITIONS OF APPROVAL, IF ANY:



Posted ID
APPROVAL
6-21-85

**NEW MEXICO OIL CONSERVATION COMMISSION
WELL LOCATION AND ACREAGE DEDICATION PLAT**

Form C-102
Supersedes C-128
Effective 1-1-65

All distances must be from the outer boundaries of the Section.

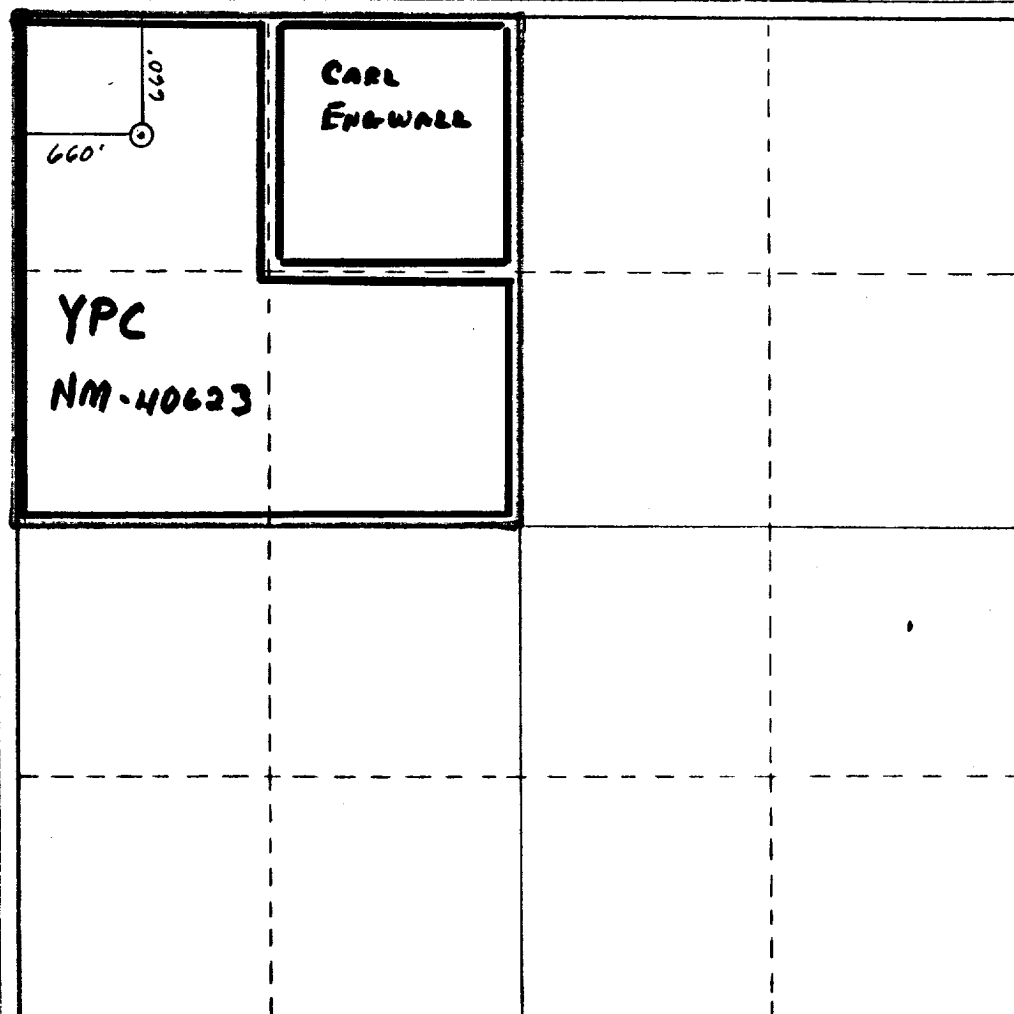
Operator Yates Petroleum Corporation			Lease Mariola "ACR" Federal Com		Well No. 1
Unit Letter D	Section 35	Township 6S	Range 26E	County Chaves	
Actual Footage Location of Well: 660 feet from the North line and 660 feet from the West line					
Ground Level Elev. 3802.5' GR	Producing Formation Abo		Pool UNDERS. PECOS SLOPE Abo		Dedicated Acreage: 160 Acres

1. Outline the acreage dedicated to the subject well by colored pencil or hatchure marks on the plat below.
2. If more than one lease is dedicated to the well, outline each and identify the ownership thereof (both as to working interest and royalty).
3. If more than one lease of different ownership is dedicated to the well, have the interests of all owners been consolidated by communitization, unitization, force-pooling, etc?

☒ Yes ☐ No If answer is "yes," type of consolidation IS TO BE COMMUNITIZATION

If answer is "no," list the owners and tract descriptions which have actually been consolidated. (Use reverse side of this form if necessary.) _____

No allowable will be assigned to the well until all interests have been consolidated (by communitization, unitization, forced-pooling, or otherwise) or until a non-standard unit, eliminating such interests, has been approved by the Commission.



CERTIFICATION

I hereby certify that the information contained herein is true and complete to the best of my knowledge and belief.

Clifton May

Name

Clifton May

Position

Regulatory Agent

Company

Yates Petroleum Corporation

Date

June 3, 1985

I hereby certify that the well location shown on this plat was plotted from field notes of actual surveys made by me or under my supervision, and that the same is true and correct to the best of my knowledge and belief.

May 30, 1985

Date Surveyed

Registered Professional Engineer and/or Land Surveyor

Herschel Jones
Certificate No. **15470**

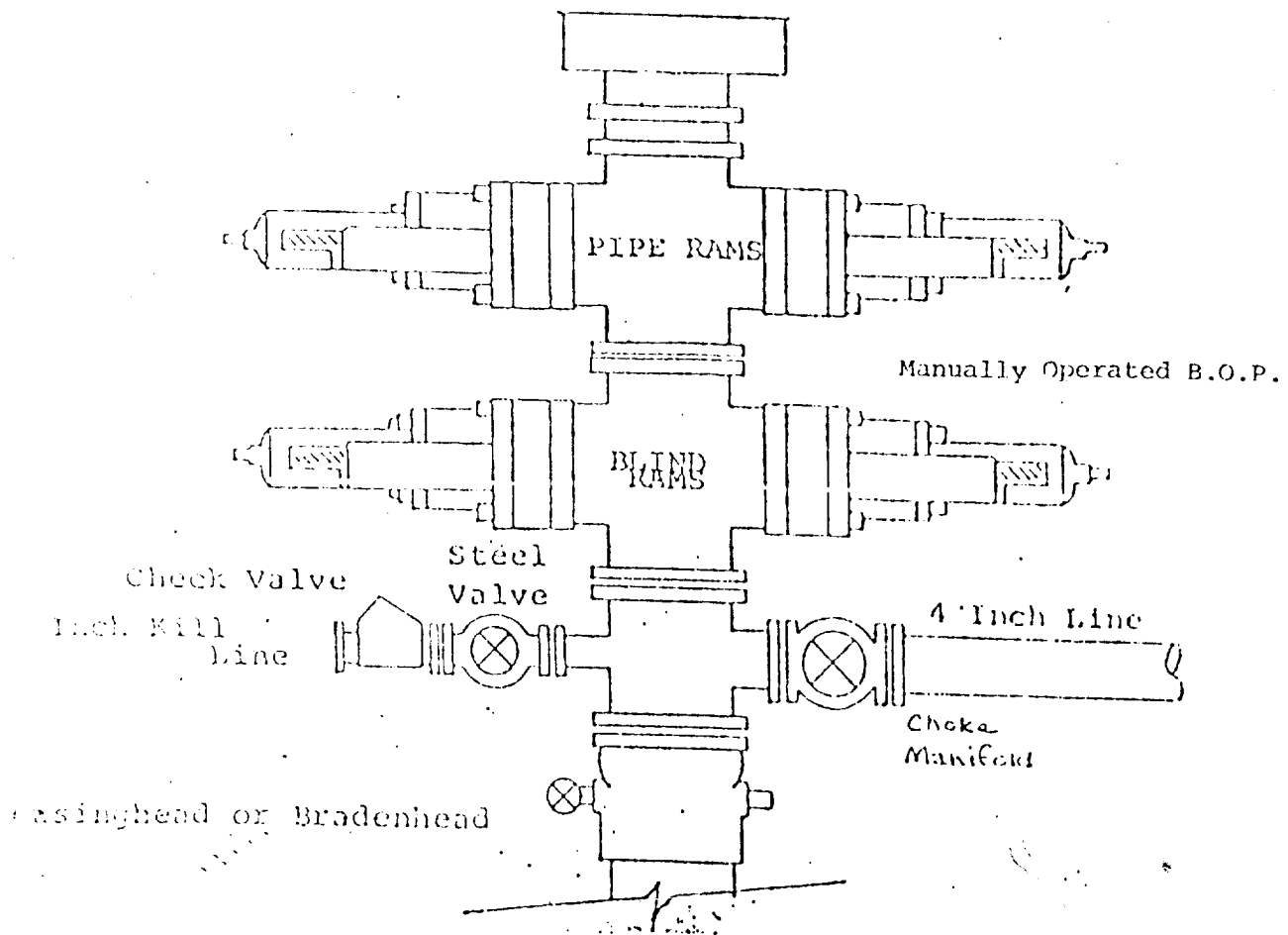


0 330 660 990 1320 1650 1980 2310 2640 2000 1800 1000 800 0

EXHIBIT B

BDP DIAGRAM

RATED 3000[#]



YATES PETROLEUM CORPORATION
Mariola "ACR" Federal Com #1
660' FWL and 660' FWL
Section 35-T6S-R26E
Chaves County, New Mexico

In conjunction with Form 9-331C, Application for Permit to Drill subject well, Yates Petroleum Company submits the following ten items of pertinent information in accordance with BLM requirements.

1. The geologic surface formation is sandy alluvium.
2. The estimated tops of geologic markers are as follows:

San Andres	809'
Glorieta	1791'
Yeso	1871'
Abo	4037'
TD	4550'

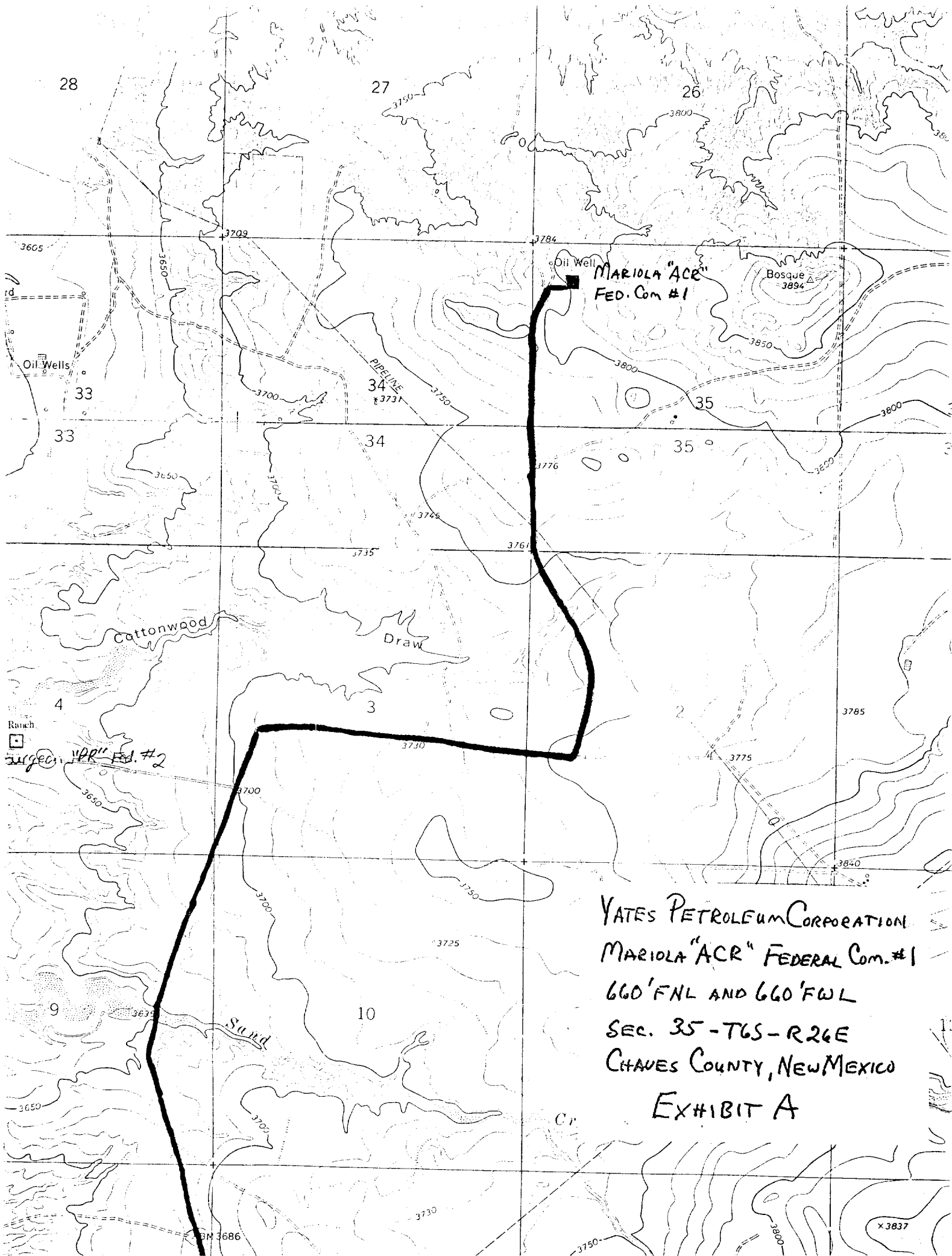
3. The estimated depths at which anticipated water, oil or gas formations are expected to be encountered:

Water: Approximately 250'

Oil or Gas: 4050'

4. Proposed Casing Program: See Form 9-331C.
5. Pressure Control Equipment: See Form 9-331C.
6. Mud Program: See Form 9-331C.
7. Auxiliary Equipment: Kelly Cock; pit level indicators and flow sensor equipment; sub with full-opening valve on floor, drill pipe connection.
8. Testing, Logging and Coring Program:

Samples: Surface casing to TD.
DST's: As warranted.
Coring: None.
Logging: CNL-FDC from TD to casing with GR-CNL on to surface; DLL from TD to casing.
9. No abnormal pressures or temperatures are anticipated.
10. Anticipated starting date: As soon as possible after approval.

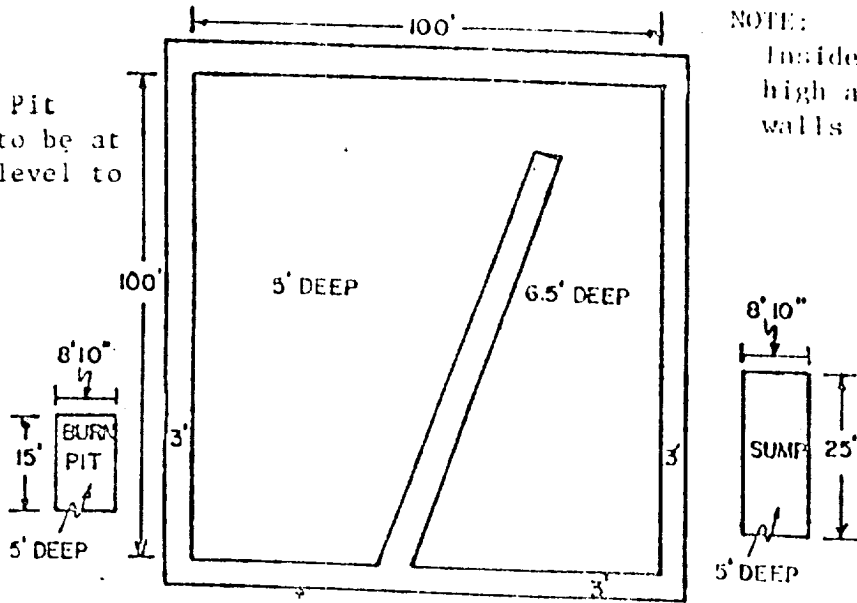


YATES PETROLEUM CORPORATION
MARIOLA "ACR" FEDERAL Com. #1
660' FNL AND 660' FWL
SEC. 35 - T6S - R26E
CHAVES COUNTY, NEW MEXICO
EXHIBIT A

YATES PETROLEUM CORP.

Exhibit C

Reserve Pit
bottom to be at
ground level to
1 ft.



NOTE:

Inside walls must be as
high and wide as outer
walls of pit.

