

**NEW MEXICO OIL CONSERVATION COMMISSION
WELL LOCATION AND ACREAGE DEDICATION PLAT**

Form C-102
Supersedes C-128
Effective 1-1-65

All distances must be from the outer boundaries of the Section.

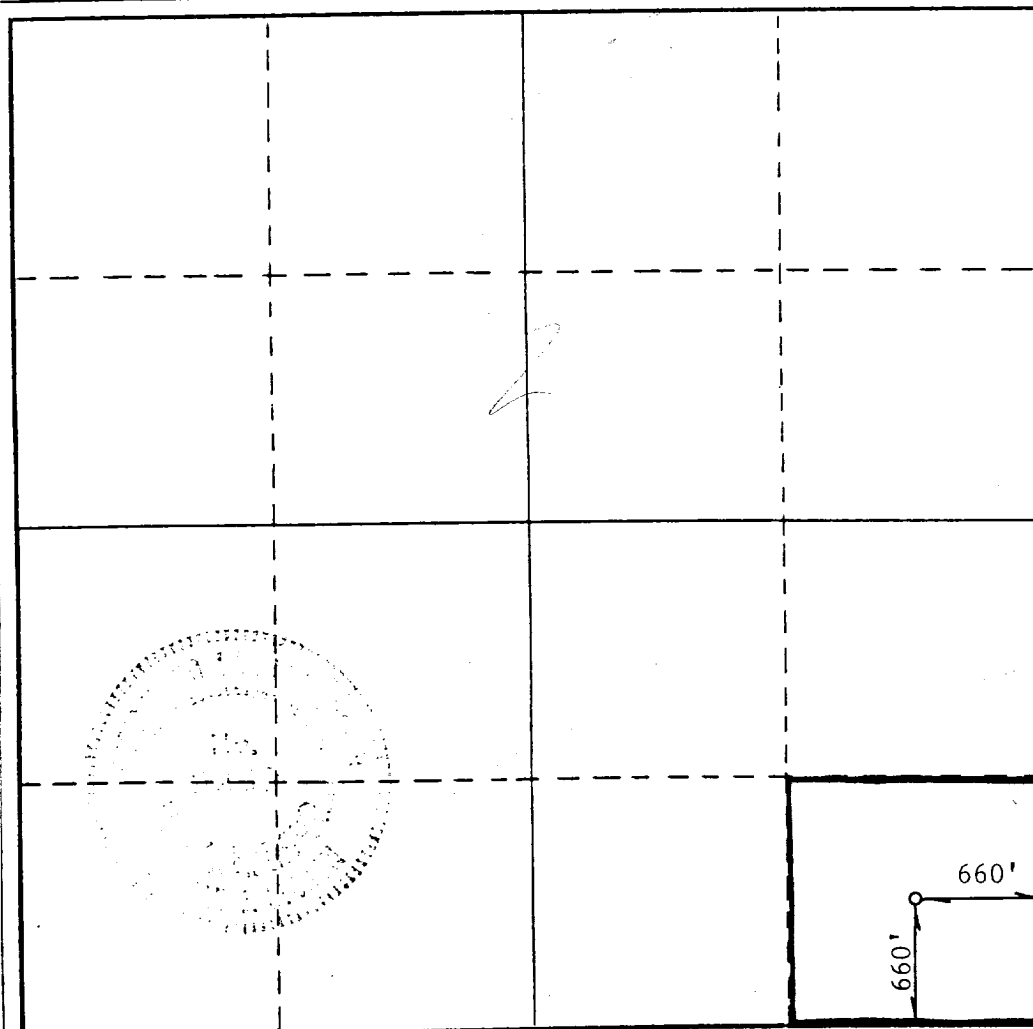
Operator Sun Exploration & Production Company			Lease Diablo State		Well No. 1
Unit Letter P	Section 32	Township 9 South	Range 27 East	County Chaves	
Actual Footage Location of Well: <div style="display: flex; justify-content: space-between;"> 660 feet from the South line and 660 feet from the East line </div>					
Ground Level Elev. 3920.1	Producing Formation Fusselman/Montoya		Pool Wildcat Fusselman/Montoya		Dedicated Acreage: 40 Acres

1. Outline the acreage dedicated to the subject well by colored pencil or hachure marks on the plat below.
2. If more than one lease is dedicated to the well, outline each and identify the ownership thereof (both as to working interest and royalty).
3. If more than one lease of different ownership is dedicated to the well, have the interests of all owners been consolidated by communitization, unitization, force-pooling, etc?
☐ Yes ☐ No If answer is "yes," type of consolidation

RECEIVED BY
DEC 15 1986
O. C. D.
ARTESIA, OFFICE

If answer is "no," list the owners and tract descriptions which have actually been consolidated. (Use reverse side of this form if necessary.) _____

No allowable will be assigned to the well until all interests have been consolidated (by communitization, unitization, forced-pooling, or otherwise) or until a non-standard unit, eliminating such interests, has been approved by the Commission.



CERTIFICATION

I hereby certify that the information contained herein is true and complete to the best of my knowledge and belief.

Maria L. Perez
 Name
Maria L. Perez
 Position
Associate Accountant
 Company
Sun Expl. & Prod. Co.
 Date
12-12-86

I hereby certify that the well location shown on this plat was plotted from field notes of actual surveys made by me or under my supervision, and that the same is true and correct to the best of my knowledge and belief.

Date Surveyed
12-10-86

Registered Professional Engineer
 and/or Land Surveyor

Ronald J. Eidson
 Certificate No. **JOHN W. WEST, 676**
RONALD J. EIDSON, 3239