

UNITED STATES  
DEPARTMENT OF THE INTERIOR  
GEOLOGICAL SURVEY

## APPLICATION FOR PERMIT TO DRILL, DEEPEN, OR PLUG BACK

## 1a. TYPE OF WORK

DRILL ☒DEEPEN ☐PLUG BACK ☐

## b. TYPE OF WELL

OIL  
WELL ☐GAS  
WELL ☒

OTHER

MULTIPLE  
ZONE ☒MULTIPLE  
ZONE ☐

## 2. NAME OF OPERATOR

McKay Oil Corporation

## 3. ADDRESS OF OPERATOR

P.O. Box 2014, Roswell, New Mexico 88202

## 4. LOCATION OF WELL (Report location clearly and in accordance with any State requirements.)

1650 FSL &amp; 1980 FWL

At proposed prod. zone

SAME

## 14. DISTANCE IN MILES AND DIRECTION FROM NEAREST TOWN OR POST OFFICE\*

28 Miles Northwest of Roswell, NM

## 15. DISTANCE FROM PROPOSED\*

LOCATION TO NEAREST  
PROPERTY OR LEASE LINE, FT.  
(Also to nearest drlg. unit line, if any)

1650

## 16. NO. OF ACRES IN LEASE

1149.21

## 18. DISTANCE FROM PROPOSED LOCATION\*

TO NEAREST WELL, DRILLING, COMPLETED,  
OR APPLIED FOR, ON THIS LEASE, FT.

1/4 mile

## 19. PROPOSED DEPTH

3,400'

17. NO. OF ACRES ASSIGNED  
TO THIS WELL

160.0

## 20. ROTARY OR CABLE TOOLS

Rotary

## 21. ELEVATIONS (Show whether DP, RT, GR, etc.)

4178 Gr.

## 22. APPROX. DATE WORK WILL START\*

ASAP

## PROPOSED CASING AND CEMENTING PROGRAM

SIZE OF HOLE	SIZE OF CASING	WEIGHT PER FOOT	SETTING DEPTH	QUANTITY OF CEMENT
12 1/4"	8 5/8"	24.0 J-55	900'	850 cf cement circulated
7 7/8"	4 1/2"	9.5 J-55	TD	1200 cf cement including 480 cf to tie in 4 1/2" to 8 5/8" from 1500' to 900'.

We propose to drill and test the Abo formation. Approximately 900' of surface casing will be set and cemented to surface. If commercial, 4 1/2" production casing will be run and cemented with adequated cover, perforated and stimulated as needed for production.

MUD PROGRAM: See Supplemental Drilling Data Which is Attached.

BOP PROGRAM: BOP will be installed on 8 5/8" casing and tested daily.

Gas is not dedicated.

Posted ID-1  
NL API  
1-16-87

IN ABOVE SPACE DESCRIBE PROPOSED PROGRAM: If proposal is to deepen or plug back, give data on present productive zone and proposed new productive zone. If proposal is to drill or deepen directionally, give pertinent data on subsurface locations and measured and true vertical depths. Give blowout preventer program, if any.

24.

SIGNED

TITLE Landman

DATE 12-17-86

(This space for Federal or State office use)

PERMIT NO.

APPROVAL DATE

S/Phil Kirk

Area Manager

DEC 30 1986

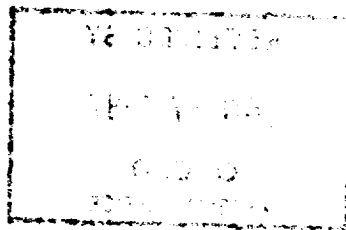
APPROVED BY

TITLE

DATE

CONDITIONS OF APPROVAL, IF ANY:

APPROVAL OF THIS APPLICATION DOES NOT WARRANT OR  
CERTIFY THAT THE APPLICANT HOLDS LEGAL OR EQUITABLE  
TITLE TO THOSE RIGHTS IN THE SUBJECT LEASE WHICH WOULD  
ENTITLE THE APPLICANT TO CONDUCT OPERATIONS THEREON.



RECEIVED BY THE NATIONAL ARCHIVES  
SERIAL NO. 6-17-10  
FORD, GEORGE  
VETERAN

All distances must be from the outer boundaries of the Section.

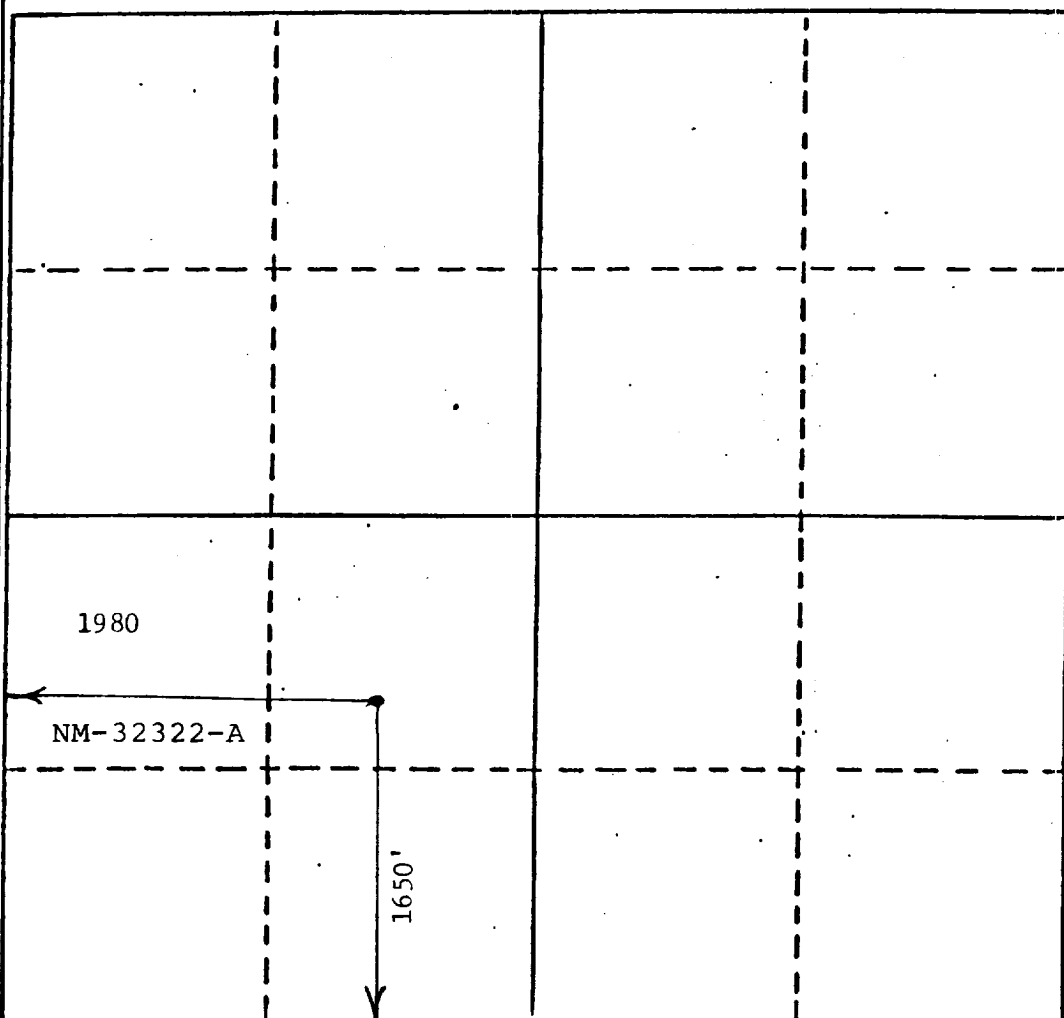
Operator McKay Oil Corp. ✓		Lease Middle Fork Federal		Well No. #2
Unit Letter K	Section 8	Township 6 South	Range 23 East	County Chaves
Actual Footage Location of Well: 1980 feet from the West line and 1650 feet from the South line				
Ground Level Elev. 4178	Producing Formation ABO	Pool W. Pecos Slope Abo	Dedicated Acres: 160 Acres	

1. Outline the acreage dedicated to the subject well by colored pencil or machine marks on the plat below.
2. If more than one lease is dedicated to the well, outline each and identify the ownership thereof (both as to working interest and royalty).
3. If more than one lease of different ownership is dedicated to the well, have the interests of all owners been consolidated by communitization, unitization, force-pooling, etc?

☐ Yes ☐ No If answer is "yes," type of consolidation \_\_\_\_\_

If answer is "no," list the owners and tract descriptions which have actually been consolidated. (Use reverse side of this form if necessary.) \_\_\_\_\_

No allowable will be assigned to the well until all interests have been consolidated (by communitization, unitization, forced-pooling, or otherwise) or until a non-standard unit, eliminating such interests, has been approved by the Division.



CERTIFICATION

I hereby certify that the information contained herein is true and complete to the best of my knowledge and belief.

Name  
Sam L. Shackelford

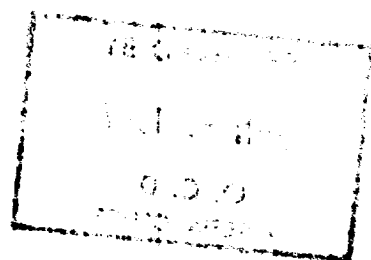
Position  
Agent

Company  
McKay Oil Corp.

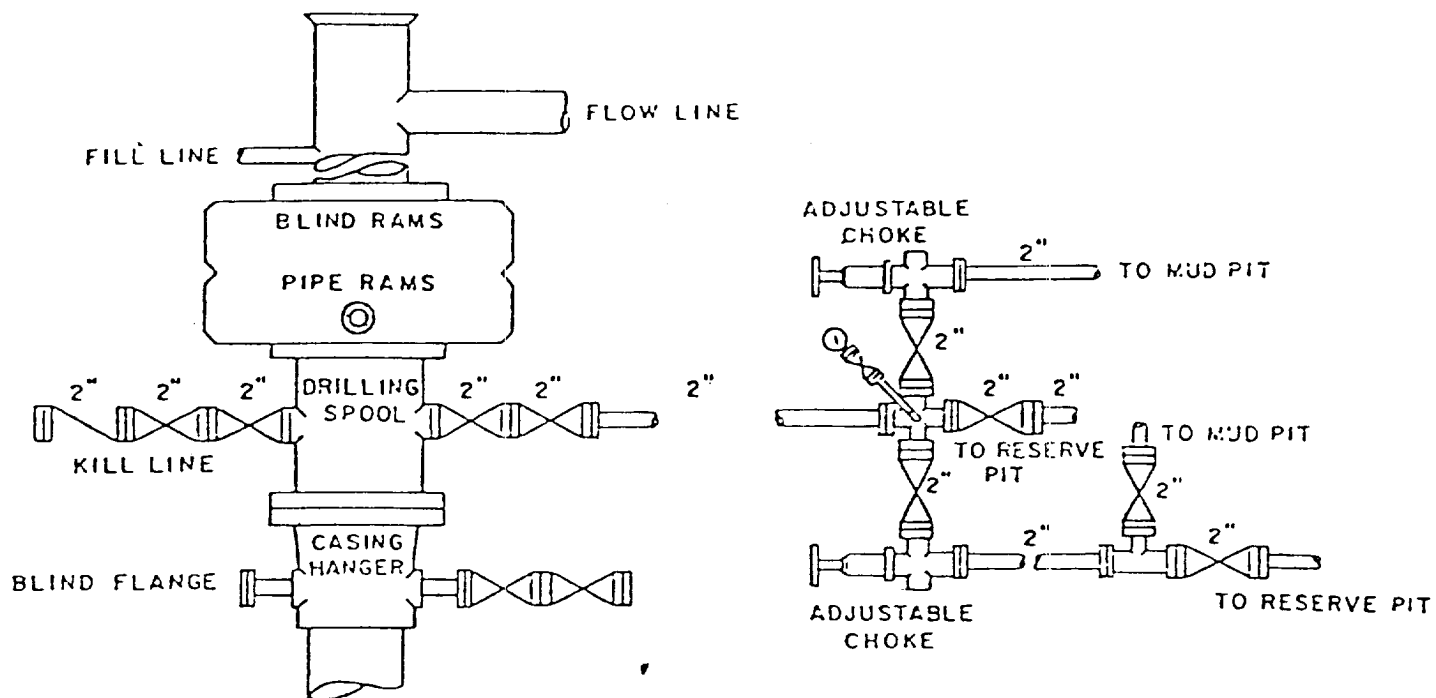
Date  
12-17-86

I hereby certify that the well location shown on this plat was plotted from field notes of actual surveys made by me or under my supervision, and that the same is true and correct to the best of my knowledge and belief.

Date Surveyed  
December 17, 1986  
Registered Professional Engineer and/or Land Surveyor  
John D. Jaquess, L.S.  
Certificate No. 6290



MCKAY OIL CORPORATION  
Middle Fork Federal #2  
NE/4SW/4 Sec. 8-6S-23E  
Chaves County, New Mexico



BOP DIAGRAM

3000# Working Pressure  
Rams Operated Daily

EXHIBIT D

SUPPLEMENTAL DRILLING DATA

McKAY OIL CORPORATION  
Middle Fork Federal #2  
NE1/4SW1/4 Sec. 8-6S-23E  
Chaves County, N.M.

NM 32322-A



The following items supplement Form 9-331C in accordance with instructions contained in NTL-6.

1. SURFACE FORMATION: San Andres
2. ESTIMATED TOPS OF GEOLOGIC MARKERS:

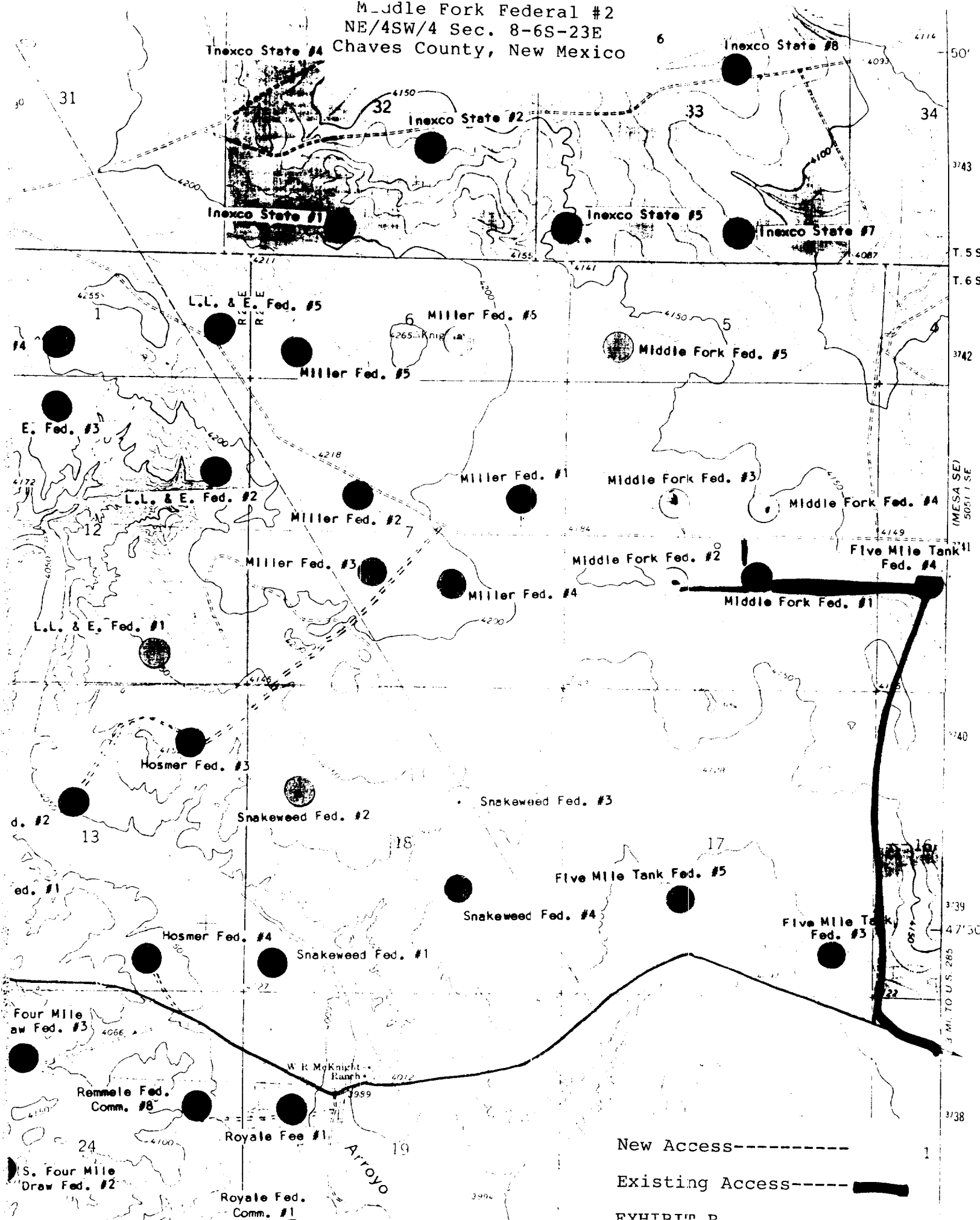
Yeso	-	729'
Tubb	-	2225'
Abo	-	2905'
3. ESTIMATED DEPTHS TO WATER, OIL OR GAS FORMATION:

Fresh water	-	In surface formations above 600'
Gas	-	In Abo formation below 2905'
4. PROPOSED CASING PROGRAM: See Form 9-331C
5. PRESSURE CONTROL EQUIPMENT: Blowout preventer stack will consist of at least a double-ram blowout preventer rated to 3000#WP. A sketch of the BOP is attached.
6. CIRCULATING MEDIUM:

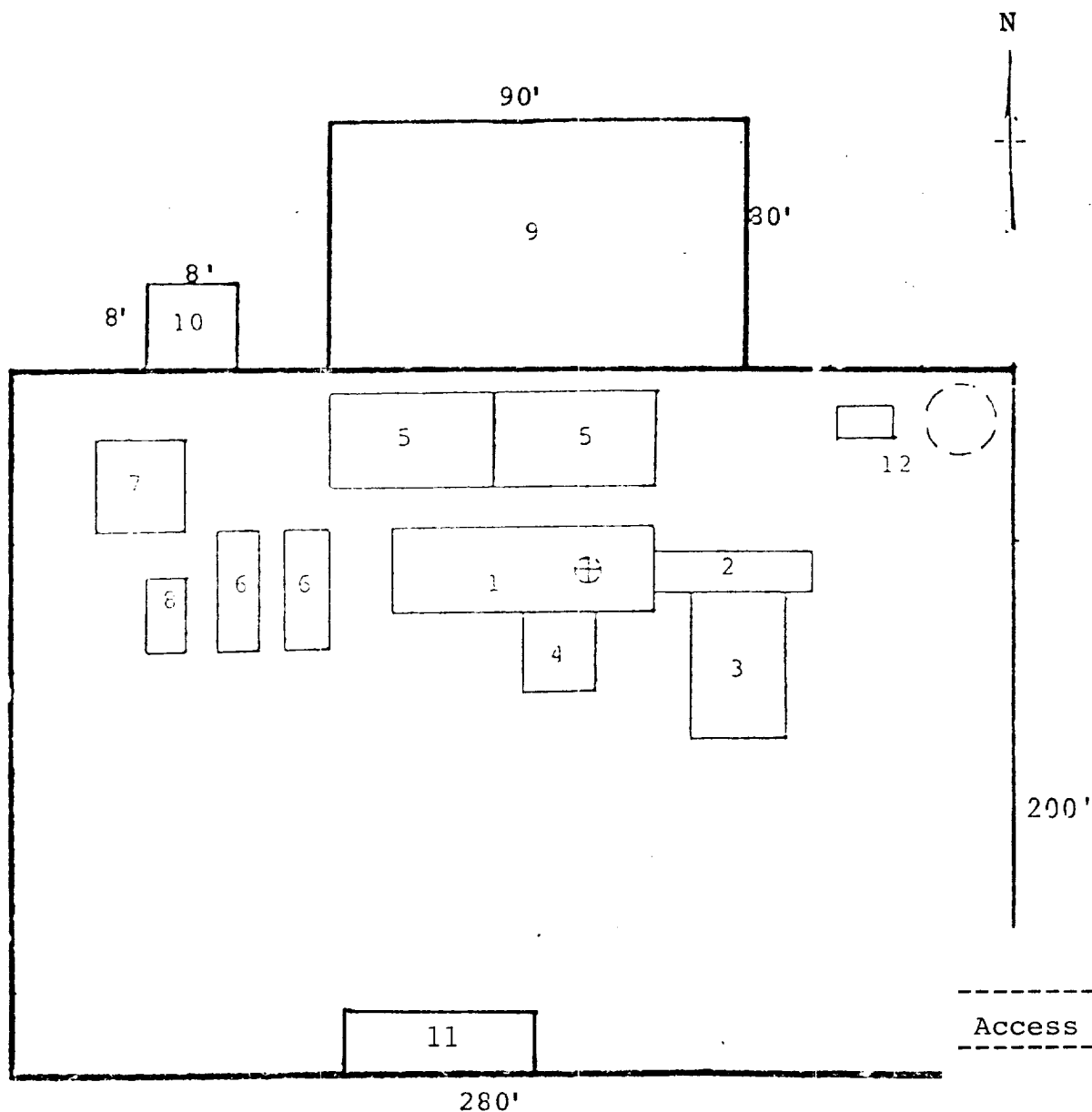
0'- 700'	Lime and gel, spud mud, viscosity 32 to 34 seconds.
700'- 2805	Fresh water
2805'- TD	Start mudding up at 2805'; viscosity 36 to 38 seconds; water loss 10 cc or less; 3-5% Diesel; 2 KCL

Mud additives will be used to control water loss.
7. AUXILIARY EQUIPMENT: full-opening drill string safety valve fit the drill string in use, will be kept on the rig floor at all times.

UNITED STATES DEPARTMENT OF THE INTERIOR  
BUREAU OF LAND MANAGEMENT  
Middle Fork Federal #2  
NE/4SW/4 Sec. 8-6S-23E  
Chaves County, New Mexico



MCK. / OIL CORPORATION  
 Middle Fork Federal #2  
 NE/4SW/4 Sec. 8-6S-23E  
 Chaves County, New Mexico



RIG LAYOUT

- |                 |                           |
|-----------------|---------------------------|
| 1. Substructure | 7. Water Tank             |
| 2. Catwalk      | 8. Light Plant            |
| 3. Pipe Rack    | 9. Reserve Pit            |
| 4. Doghouse     | 10. Trash Pit             |
| 5. Mud Pits     | 11. Trailer House         |
| 6. Mud Pumps    | 12. Production Facilities |