

NEW MEXICO OIL CONSERVATION COMMISSION  
WELL LOCATION AND ACREAGE DEDICATION PLAT

Form C-102  
Supersedes C-128  
Effective 1-1-85

All distances must be from the outer boundaries of the Section

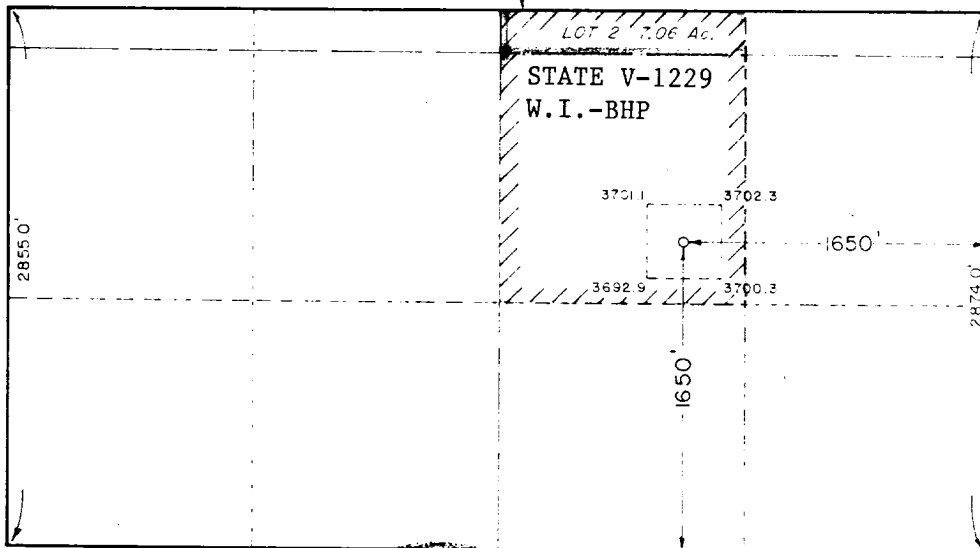
Operator BHP Petroleum <del>Americas</del> Company Inc.		Lease Ervin Ranch State		Well No. 1
Unit Letter G Y	Section 5	Township 11 South	Range 27 East	County Chaves
Actual Footage Location of Well: 1650 feet from the south line and 1650 feet from the east line				
Ground Level Elev. 3697.4	Producing Formation Montoya	Pool Wildcat	Dedicated Acreage: 47.96 Acres	

1. Outline the acreage dedicated to the subject well by colored pencil or hatchure marks on the plat below.
2. If more than one lease is dedicated to the well, outline each and identify the ownership thereof (both as to working interest and royalty). See Below
3. If more than one lease of different ownership is dedicated to the well, have the interests of all owners been consolidated by communitization, unitization, force-pooling, etc? Communitization pending  
☐ Yes ☒ No If answer is "yes," type of consolidation \_\_\_\_\_

If answer is "no," list the owners and tract descriptions which have actually been consolidated. (Use reverse side of this form if necessary.) See Below

No allowable will be assigned to the well until all interests have been consolidated (by communitization, unitization, forced-pooling, or otherwise) or until a non-standard unit, eliminating such interests, has been approved by the Commission.

FEE LEASE:  
R.I.-R.F. RICE  
W.I.-BHP



Scale: 1" = 1000'

CERTIFICATION

I hereby certify that the information contained herein is true and complete to the best of my knowledge and belief.

*Jerry W. Long*  
Name  
JERRY W. LONG

Position  
Agent

Company  
BHP PETROLEUM COMPANY INC.

Date  
August 16, 1988

I hereby certify that the well location shown on this plat was plotted from field notes of actual surveys made by me or under my supervision, and that the same is true and correct to the best of my knowledge and belief.

Date Surveyed  
August 11, 1988

Registered Professional Engineer  
and/or Land Surveyor

*John W. West*  
Certificate No. JOHN W. WEST 676

Ronald J. Eidson 3239