

Form 3160-3  
(November 1983)  
(formerly 9-331C)

NM Oil Conn. Commission  
Drawer DL

Artesia, NM 88210

SUBMIT IN TRIPLICATE\*  
(Other instructions on  
reverse side)

C/SF  
30-05-62638  
Form approved.  
Budget Bureau No. 1004-0136  
Expires August 31, 1985

UNITED STATES  
DEPARTMENT OF THE INTERIOR  
BUREAU OF LAND MANAGEMENT

APPLICATION FOR PERMIT TO DRILL, DEEPEN, OR PLUG BACK

1a. TYPE OF WORK

DRILL ☒

DEEPEN ☐

PLUG BACK ☐

b. TYPE OF WELL

OIL  
WELL ☐

GAS  
WELL ☒

OTHER ☐

2. NAME OF OPERATOR

Stevens Operating Corporation

3. ADDRESS OF OPERATOR

P.O. Box 2203, Rosell, N.M. 88201

4. LOCATION OF WELL (Report location clearly and in accordance with any State and Federal laws)  
At surface

660 FNL 1980 FEL, Sec. 4, T7S, R26E

At proposed prod. zone

14. DISTANCE IN MILES AND DIRECTION FROM NEAREST TOWN OR POST OFFICE\*

26 air miles northeast of Roswell, New Mexico

O. C. D.

ARTEZIA, OFFICE

10. DISTANCE FROM PROPOSED\*

LOCATION TO NEAREST  
PROPERTY OR LEASE LINE, FT.  
(Also to nearest drlg. unit line, if any)

16. NO. OF ACRES IN LEASE

1160

17. NO. OF ACRES ASSIGNED  
TO THIS WELL

160

18. DISTANCE FROM PROPOSED LOCATION\*  
TO NEAREST WELL, DRILLING, COMPLETED,  
OR APPLIED FOR, ON THIS LEASE, FT.

19. PROPOSED DEPTH

4400'

20. ROTARY OR CABLE TOOLS

Rotary

21. ELEVATIONS (Show whether DF, RT, GR, etc.)

3650.2 GR

22. APPROX. DATE WORK WILL START\*

4-21-88

23.

PROPOSED CASING AND CEMENTING PROGRAM

SIZE OF HOLE	SIZE OF CASING	WEIGHT PER FOOT	SETTING DEPTH	QUANTITY OF CEMENT
12 1/4"	8 5/8"	24.00#	750	Circulate
7 7/8"	4 1/2"	10.50#	4400	660 ft. above Abo

Well will be drilled to a total depth of 4400' and all potential zones evaluated. If commercial production is indicated, Well will be selectively perforated and stimulated.

Attached are:

1. Well location & Dedication Plat
2. Supplemental Drilling Data
3. Surface Use Plan

Gas is dedicated to Transwestern Pipeline Company under Contract #5304

POST ID#1  
NL & API  
9-16-88

IN ABOVE SPACE DESCRIBE PROPOSED PROGRAM: If proposal is to deepen or plug back, give data on present productive zone and proposed new productive zone. If proposal is to drill or deepen directionally, give pertinent data on subsurface locations and measured and true vertical depths. Give blowout preventer program, if any.

24.

SIGNED

*John Greenwood*

TITLE

General Manager

DATE

3-17-88

(This space for Federal or State office use)

PERMIT NO.

APPROVAL DATE

APPROVED BY

S/Levi Deike, Acting

TITLE

Area Manager

DATE

AUG 26 1988

CONDITIONS OF APPROVAL, IF ANY:

APPROVAL OF THIS APPLICATION DOES NOT WARRANT OR CERTIFY THAT THE APPLICANT HOLDS LEGAL OR EQUITABLE TITLE TO THOSE RIGHTS IN THE SUBJECT LEASE WHICH WOULD ENTITLE THE APPLICANT TO CONDUCT OPERATIONS THEREON.

PLEASE BE ADVISED THAT THERE WILL BE NO EXCAVATION OF FEDERALLY OWNED MINERAL MATERIAL FOR CONSTRUCTION OF THE ACCESS ROAD OR PAD WITHOUT PAYMENT IN ADVANCE.

**NEW MEXICO OIL CONSERVATION COMMISSION  
WELL LOCATION AND ACREAGE DEDICATION PLAT**

Form C-102  
Supersedes C-128  
Effective 1-1-65

All distances must be from the outer boundaries of the Section

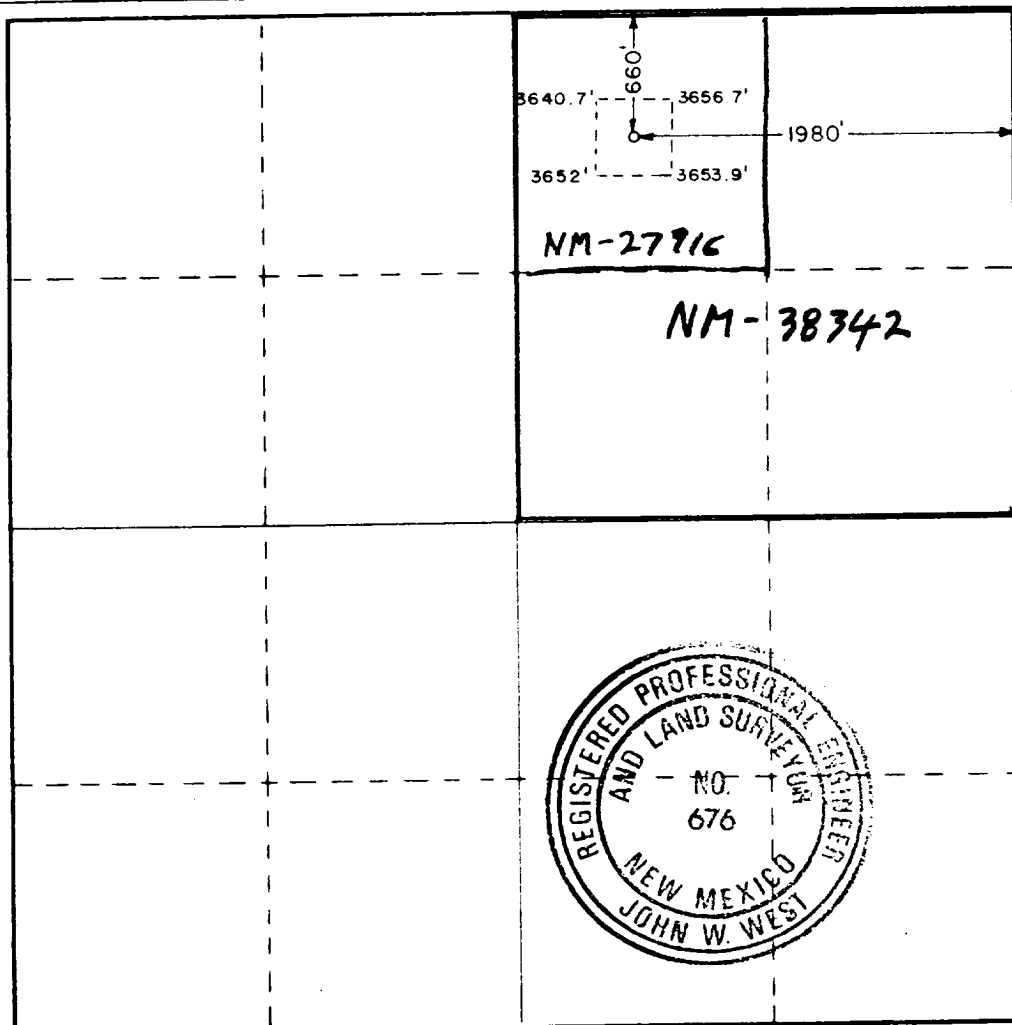
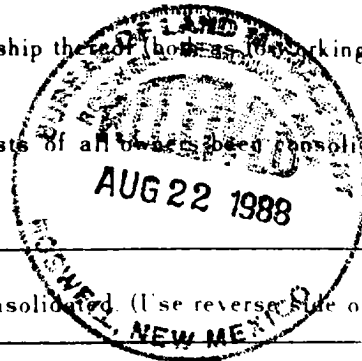
Operator <b>Stevens Operating Company</b>			Lease <b>Helen <del>Collins</del> Fed. Com.</b>		Well No. <b>1</b>
Unit Letter <b>B</b>	Section <b>4</b>	Township <b>7 South</b>	Range <b>26 East</b>	County <b>Chaves</b>	
Actual Footage Location of Well: <b>1980</b> feet from the <b>East</b> line and <b>660</b> feet from the <b>North</b> line					
Ground Level Elev. <b>3650.2</b>	Producing Formation <b>Abo</b>		Pool <b>Pecos Slope Abo</b>		Dedicated Acreage: <b>160</b> Acres

1. Outline the acreage dedicated to the subject well by colored pencil or hachure marks on the plat below.
2. If more than one lease is dedicated to the well, outline each and identify the ownership thereof (by lease, working interest and royalty).
3. If more than one lease of different ownership is dedicated to the well, have the interests of all leases been consolidated by communitization, unitization, force-pooling, etc?

☒ Yes    ☐ No    If answer is "yes," type of consolidation Com.

If answer is "no," list the owners and tract descriptions which have actually been consolidated. (Use reverse side of this form if necessary.)

No allowable will be assigned to the well until all interests have been consolidated (by communitization, unitization, forced-pooling, or otherwise) or until a non-standard unit, eliminating such interests, has been approved by the Commission.



**CERTIFICATION**

I hereby certify that the information contained herein is true and complete to the best of my knowledge and belief.

Name Patricia Greenwade  
 Position General Manager  
 Company Stevens Operating Corporation  
 Date 3-17-88

I hereby certify that the well location shown on this plat was plotted from field notes of actual surveys made by me or under my supervision, and that the same is true and correct to the best of my knowledge and belief.

Date Surveyed March 15, 1988

Registered Professional Engineer and/or Land Surveyor

Certificate No. JOHN W. WEST, 676  
RONALD J. EIDSON, 3239

SUPPLEMENTAL DRILLING DATA

STEVENS OPERATING CORPORATION  
WELL #1 HELEN ~~COLLINS~~ FEDERAL COM.  
660' FNL 1980' FEL, Sec. 4, T-7-S, R-26-E  
CHAVES COUNTY, NEW MEXICO



1. SURFACE FORMATION: Alluvium

2. ESTIMATED TOPS OF GEOLOGIC MARKERS:

San Andres	620'	P-1	1080'
Glorietta	1700'	Yeso	3100'
Abo	3820'	TD	4400'

3. ANTICIPATED POROSITY ZONES:

Water	150'	-	200'
Oil	1000'	-	1670'
Gas	3820'	-	4400'

4. CASING DESIGN:

<u>Size</u>	<u>Interval</u>	<u>Weight</u>	<u>Grade</u>	<u>Joint</u>	<u>Condition</u>
8 5/8"	0 - 750'	24.0#	K-55	STC	New
4 1/2"	0 - 4400'	10.5#	K-55	STC	New

5. SURFACE CONTROL EQUIPMENT:

A double Ram-type preventer. (900 Series) A Sketch of BOP stack is attached.

6. CIRCULATING MEDIUM:

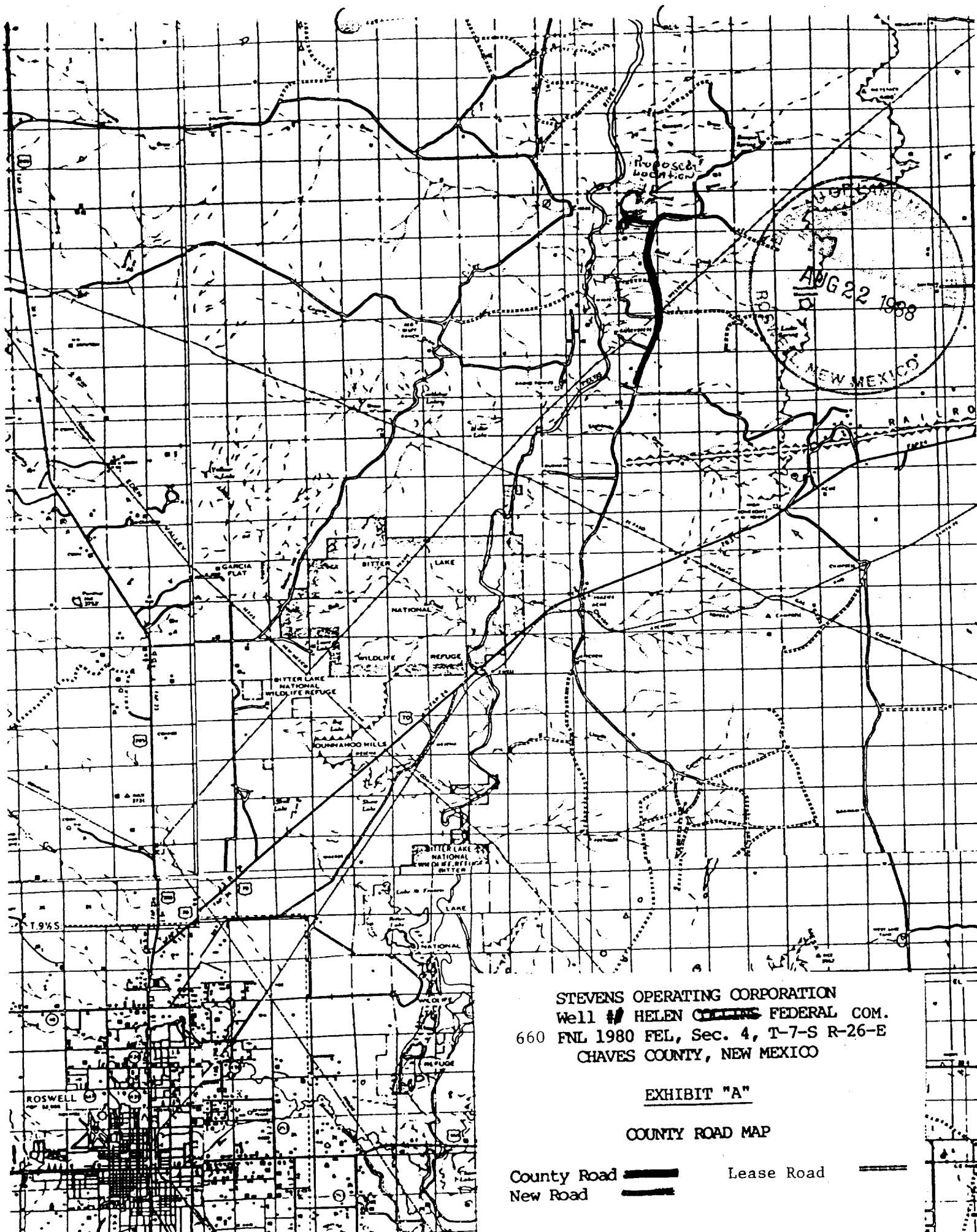
0 - 750'	Fresh water mud wit gel added if needed.
750 - 4400'	Salt water mud, conditioned as necessary fo control of viscosity and water loss.

7. AUXILIARY EQUIPMENT: Drill string safety valve.

8. TESTING, LOGGING, AD CORING PROGRAMS: Coring and testing may be performed in zones of interest. Compensated Neutron-Formation Density w/Gamma Ray Log. 0-T.D. Dual Laterlog Shoe to T.D.

9. ABNORMAL PRESSURES, TEMPERATURES OR GASES: None anticipated.

10. ANTICIPATED DATES: It is planned that drilling operations will commence about August 30, 1988. Duration of drilling and completion operations should be 20 to 60 days.



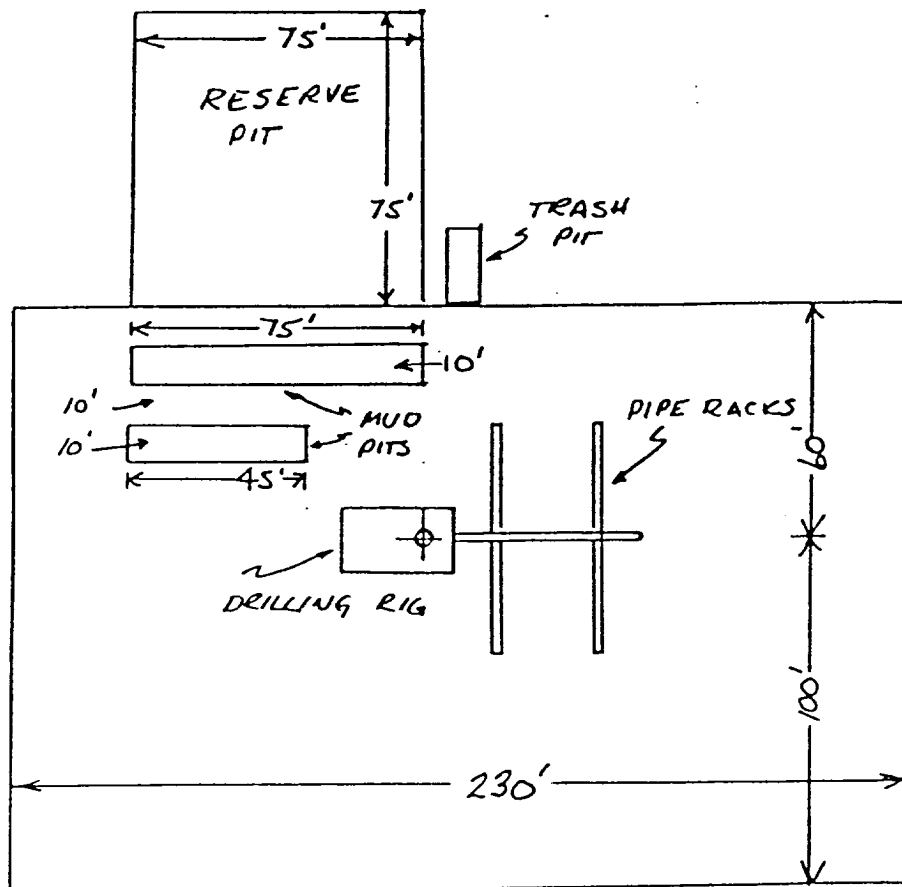
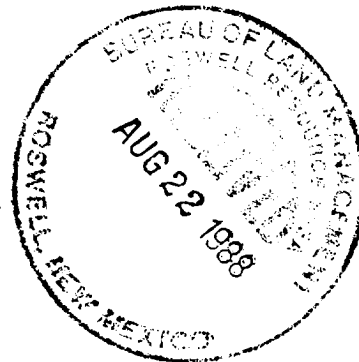
STEVENS OPERATING CORPORATION  
Well # HELEN ~~COLUMBIA~~ FEDERAL COM.  
660 FNL 1980 FEL, Sec. 4, T-7-S R-26-E  
CHAVES COUNTY, NEW MEXICO

EXHIBIT "A"

COUNTY ROAD MAP

County Road  
New Road

Lease Road



STEVENS OPERATING CORPORATION  
Well #1 HELEN ~~COLEMAN~~ FEDERAL COM  
660 FNL 1980 FEL, Sec. 4, T-7-S R-26-E  
CHAVES COUNTY, NEW MEXICO

EXHIBIT "D"

SKETCH OF WELL PAD