

DEPARTMENT OF THE INTERIOR BUREAU OF LAND MANAGEMENT

APPLICATION FOR PERMIT TO DRILL, DEEPEN, OR PLUG BACK

1a. TYPE OF WORK

DRILL ☒

DEEPEN ☐

PLUG BACK ☐

b. TYPE OF WELL

OIL WELL ☐

GAS WELL ☒

OTHER

SINGLE ZONE ☐

MULTIPLE ZONE ☐

2. NAME OF OPERATOR

McClellan Oil Corporation

RECEIVED

3. ADDRESS OF OPERATOR

P. O. Dr. 730 Roswell, New Mexico 88202

4. LOCATION OF WELL (Report location clearly and in accordance with any State requirements)

At surface

1910 FSL & 1650' FWL

At proposed prod. zone

same

14. DISTANCE IN MILES AND DIRECTION FROM NEAREST TOWN OR POST OFFICE*

19 miles northeast of Roswell, NM

15. DISTANCE FROM PROPOSED*

LOCATION TO NEAREST

PROPERTY OR LEASE LINE, FT.

(Also to nearest drlg. unit line, if any)

1650'

16. NO. OF ACRES IN LEASE

640

17. NO. OF ACRES ASSIGNED

TO THIS WELL 160

18. DISTANCE FROM PROPOSED LOCATION*

TO NEAREST WELL, DRILLING, COMPLETED,

OR APPLIED FOR, ON THIS LEASE, FT.

N/A

19. PROPOSED DEPTH

4500'

20. ROTARY OR CABLE TOOLS

Rotary

21. ELEVATIONS (Show whether DF, RT, GR, etc.)

3633' GL

22. APPROX. DATE WORK WILL START*

November 27, 1988

23.

PROPOSED CASING AND CEMENTING PROGRAM

SIZE OF HOLE	SIZE OF CASING	WEIGHT PER FOOT	SETTING DEPTH	QUANTITY OF CEMENT
12 1/4"	8 5/8"	23#	900'	250 Sx Class "C" circulated
7 7/8"	4 1/2"	10.5#	4,500'	350 Sx class "C"

Mud Program: Drill to top of Abo with fresh water and native mud. Will mud up 100' above Abo with 9.5 lb/gal wt., 40 viscosity mud and 15 cc water loss.

BOP Specification: Will install and test daily a 3,000# wp Shaffer Type E double hydraulic BOP with 4" pipe and blind rams with koomeg closing unit.

Gas is not dedicated.

IN ABOVE SPACE DESCRIBE PROPOSED PROGRAM: If proposal is to deepen or plug back, give data on present productive zone and proposed new productive zone. If proposal is to drill or deepen directionally, give pertinent data on subsurface locations and measured and true vertical depths. Give blowout preventer program, if any.

24.

Agent for:

McClellan Oil Corporation

DATE Sept. 13, 1988

SIGNED

TITLE

DATE

(This space for Federal or State office use)

PERMIT NO.

APPROVAL DATE

S/Phil Kirk

SEP 30 1988

APPROVED BY

TITLE

Area Manager

DATE

CONDITIONS OF APPROVAL, IF ANY:

PLEASE BE ADVISED THAT THERE WILL BE NO EXCAVATION OF FEDERALLY OWNED MINERAL MATERIAL FOR CONSTRUCTION OF THE ACCESS ROAD OR PAD WITHOUT PAYMENT IN ADVANCE.

*See Instructions On Reverse Side

APPROVAL OF THIS APPLICATION DOES NOT WARRANT OR CERTIFY THAT THE APPLICANT HOLDS LEGAL OR EQUITABLE TITLE TO THOSE RIGHTS IN THE SUBJECT LEASE WHICH WOULD ENTITLE THE APPLICANT TO CONDUCT OPERATIONS THEREON.

U.S.C. Section 1001, makes it a crime for any person knowingly and willfully to make to any department or agency of the United States any false, fictitious or fraudulent statements or representations as to any matter within its jurisdiction.

All distances must be from the outer boundaries of the Section.

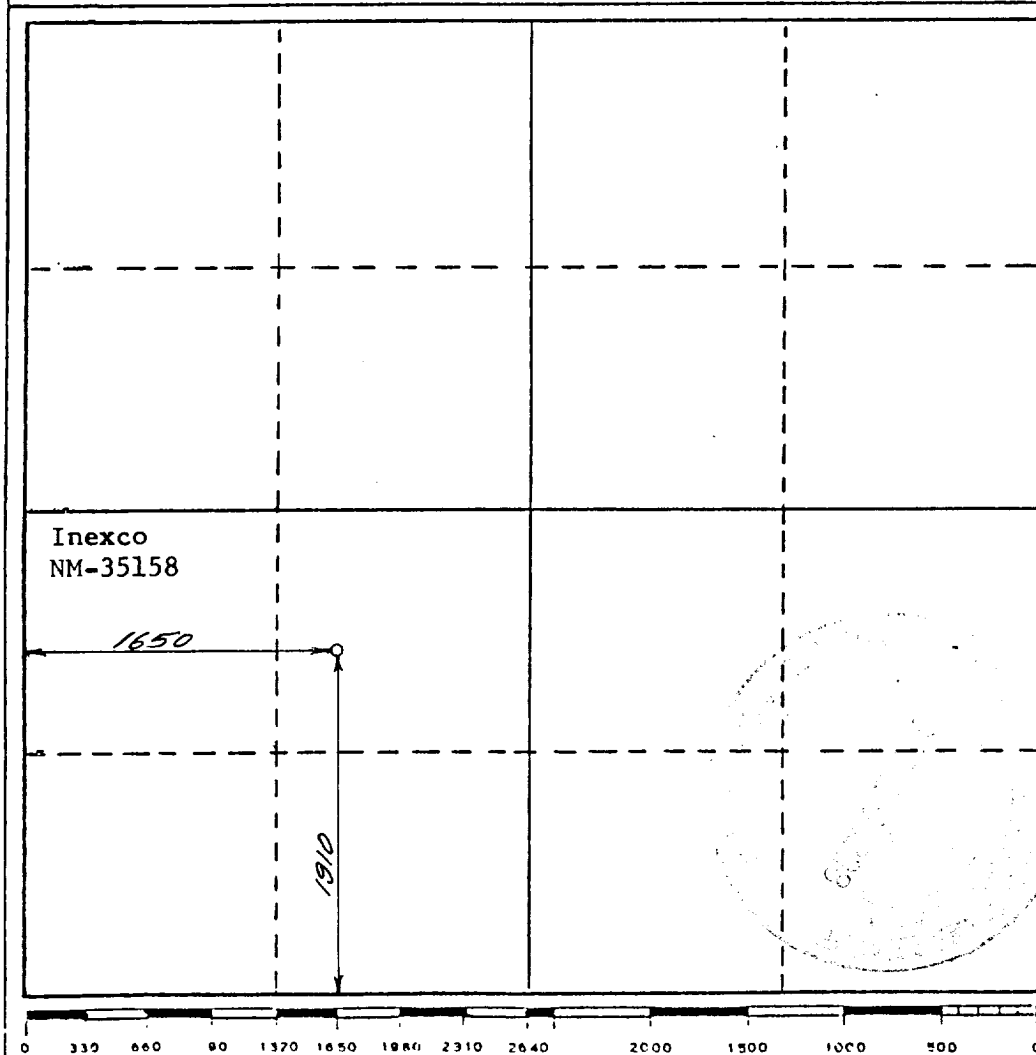
Operator McClellan Oil Corporation			Lease Jill Federal		Well No. 1
Unit Letter K	Section 24	Township 9 South	Range 25 East	County Chaves	
Actual Footage Location of Well: 1910 feet from the South line and 1650 feet from the West line					
Ground Level Elev. 3633	Producing Formation Abo		Pool S, Pecos Slope Abo	Dedicated Acreage: 160 Acres	

1. Outline the acreage dedicated to the subject well by colored pencil or hachure marks on the plat below.
2. If more than one lease is dedicated to the well, outline each and identify the ownership thereof (both as to working interest and royalty).
3. If more than one lease of different ownership is dedicated to the well, have the interests of all owners been consolidated by communitization, unitization, force-pooling, etc?

☐ Yes ☐ No If answer is "yes," type of consolidation _____

If answer is "no," list the owners and tract descriptions which have actually been consolidated. (Use reverse side of this form if necessary.) _____

No allowable will be assigned to the well until all interests have been consolidated (by communitization, unitization, forced-pooling, or otherwise) or until a non-standard unit, eliminating such interests, has been approved by the Division.



CERTIFICATION

I hereby certify that the information contained herein is true and complete to the best of my knowledge and belief,

George R. Smith

Name
George R. Smith

Position
Agent for:

Company
McClellan Oil Corporation

Date
September 13, 1988

I hereby certify that the well location shown on this plat was plotted from field notes of actual surveys made by me or under my supervision, and that the same is true and correct to the best of my knowledge and belief.

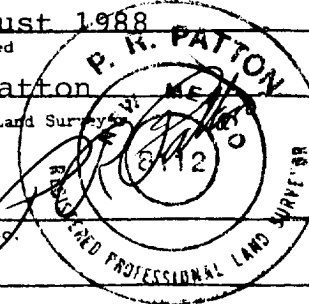
25 August 1988
Date Surveyed

P. R. Patton

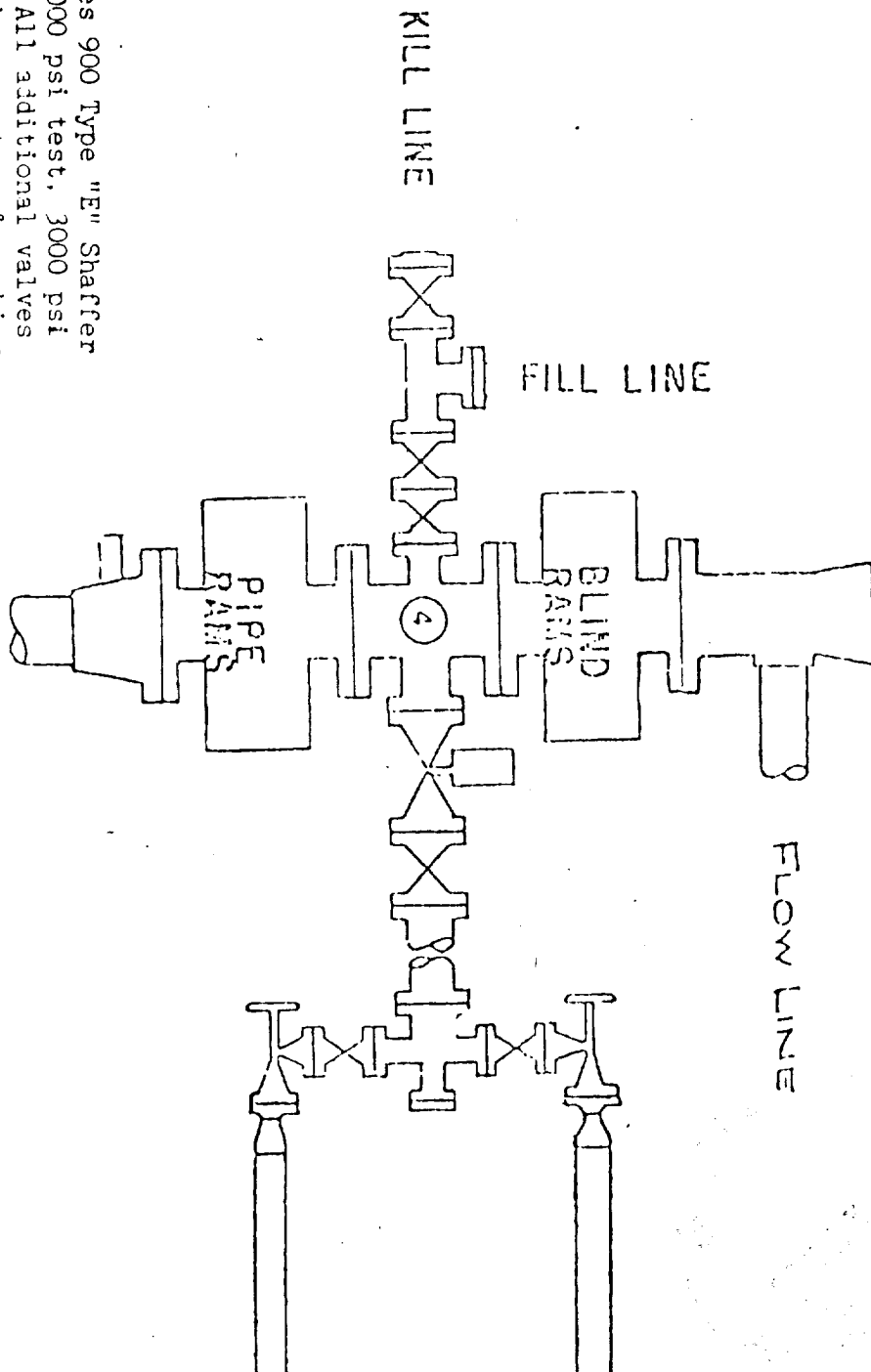
Registered Land Surveyor

8112

Certificate No.



WEK DRILLING CO., INC. - Rig 1 & 3
BLOWOUT PREVENTER SPECIFICATION



BOP's are 10" Series 900 Type "E" Shaffer Double Hydraulic 6000 psi test, 3000 psi working pressure. All additional valves & connections are the same test & working pressures.

EXHIBIT "E"
 McCLELLAN OIL CORPORATION
 Jill Federal, Well No. 1
 BOP Specifications

APPLICATION FOR DRILLING

McCLELLAN OIL CORPORATION
Jill Federal, Well No. 1
1910' FSL & 1650' FWL, Sec. 24-T9S-R25E
Chaves County, New Mexico
Lease No.: NM-35158
(Development Well)

In conjunction with Form 3160-3, Application for Permit to Drill subject well, McClellan Oil Corporation submits the following items of pertinent information in accordance with BLM requirements:

1. The geologic surface formation is recent Permian with quaternary alluvium and other surficial deposits.
2. The estimated tops of geologic markers are as follows:

San Andres	586'	Abo	3900'
Glorieta	1684'	T.D.	4500'
Tubb	3170'		

3. The estimated depths at which water, oil or gas formations are anticipated to encountered:

Water: Surface water between 100' to 300'.

Oil: None expected.

Gas: In the Abo below 3900'.

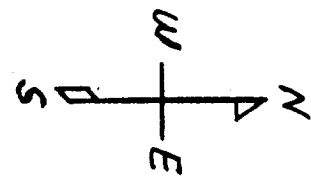
4. Proposed Casing Program: See Form 3160-3.
5. Pressure Control Equipment: See Form 3160-3 and Exhibit "E".
6. Mud Program: See Form 3160-3.
7. Auxiliary Equipment: Blowout preventer, gas detector, kelly cock, pit level monitor, flow sensors and stabbing valve.
8. Testing, Logging, and Coring Program:

Drill Stem Tests: None planned.

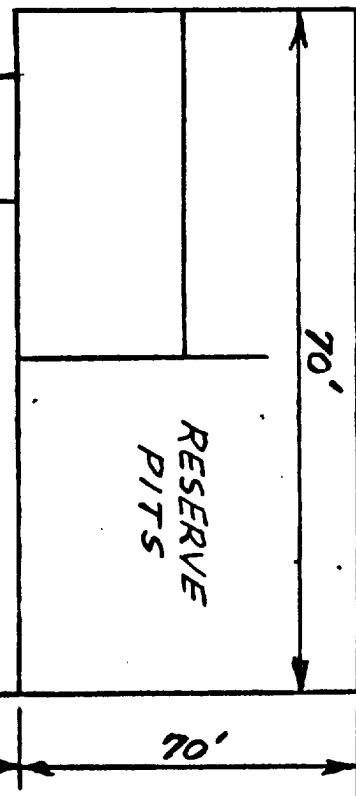
Logging: From surface Casing to T.D.: G/R, CNL-LDT, DLL,

Coring: None planned.

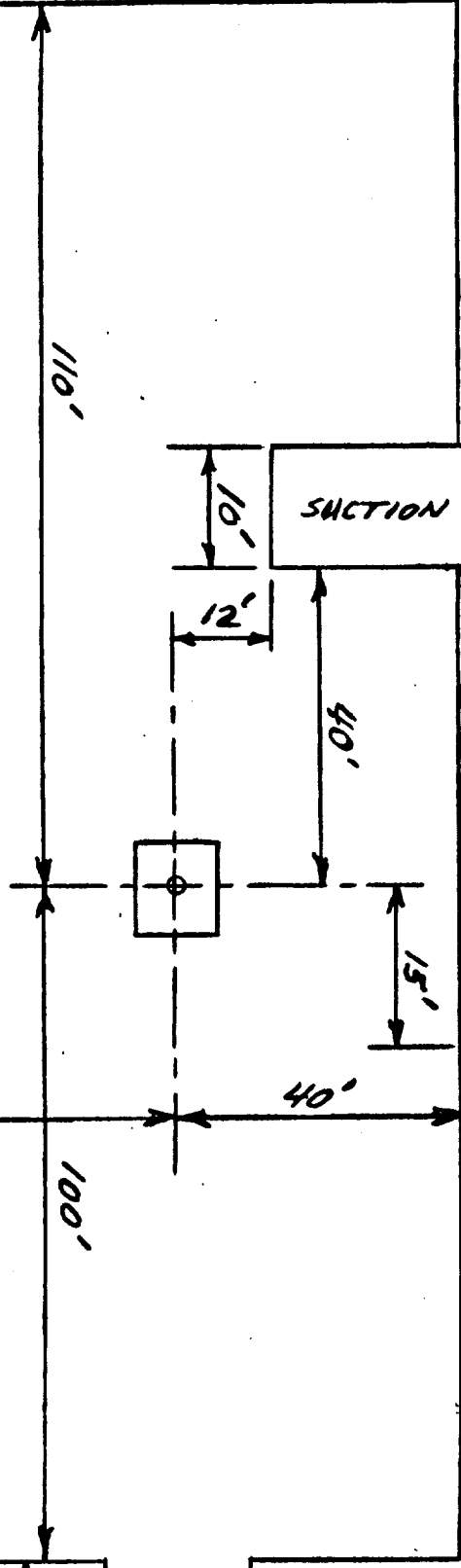
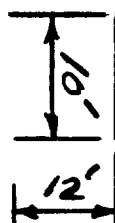
9. No abnormal pressures or temperatures are anticipated. In the event, abnormal pressures are encountered the proposed mud program will be modified.
10. Anticipated starting date: November 27, 1988.
Anticipated completion of drilling operations: Approximately 35 days.



BURN PIT



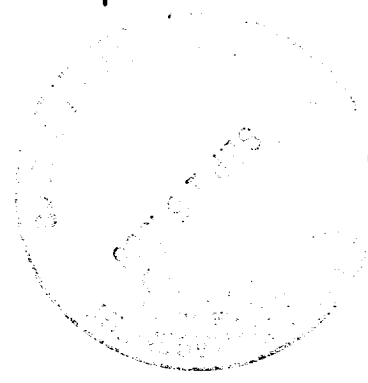
SUCTION PIT



CELLAR TO BE 5'X5'X5'
IF REQUIRED

1-18-83

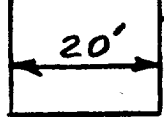
ACCESS
ROAD

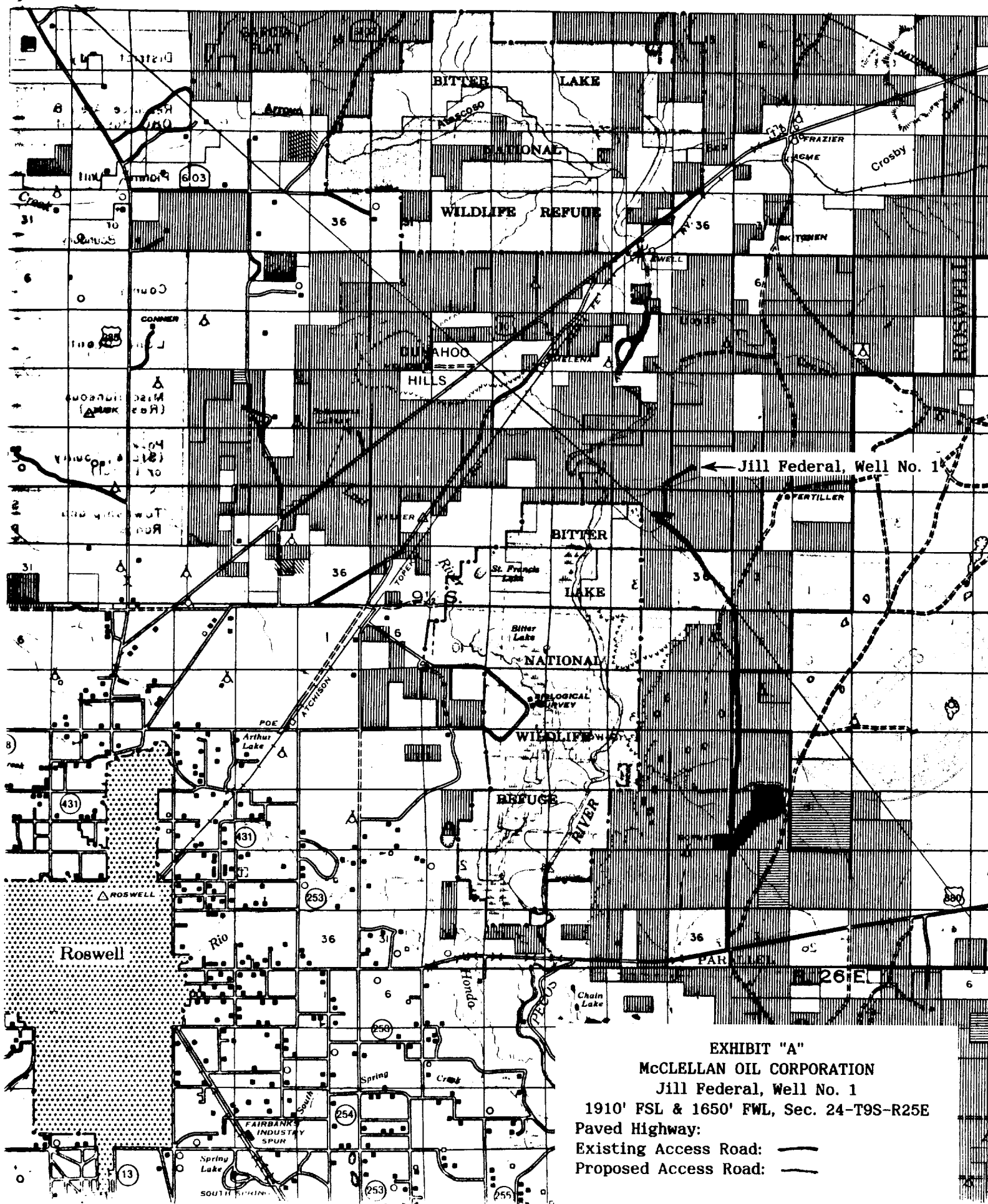


PLAT LAYOUT RIG 1
WELL DRILLING

EXHIBIT "D"
McCLELLAN OIL CORPORATION
Jill Federal, Well No. 1
Rig Layout

STINGER





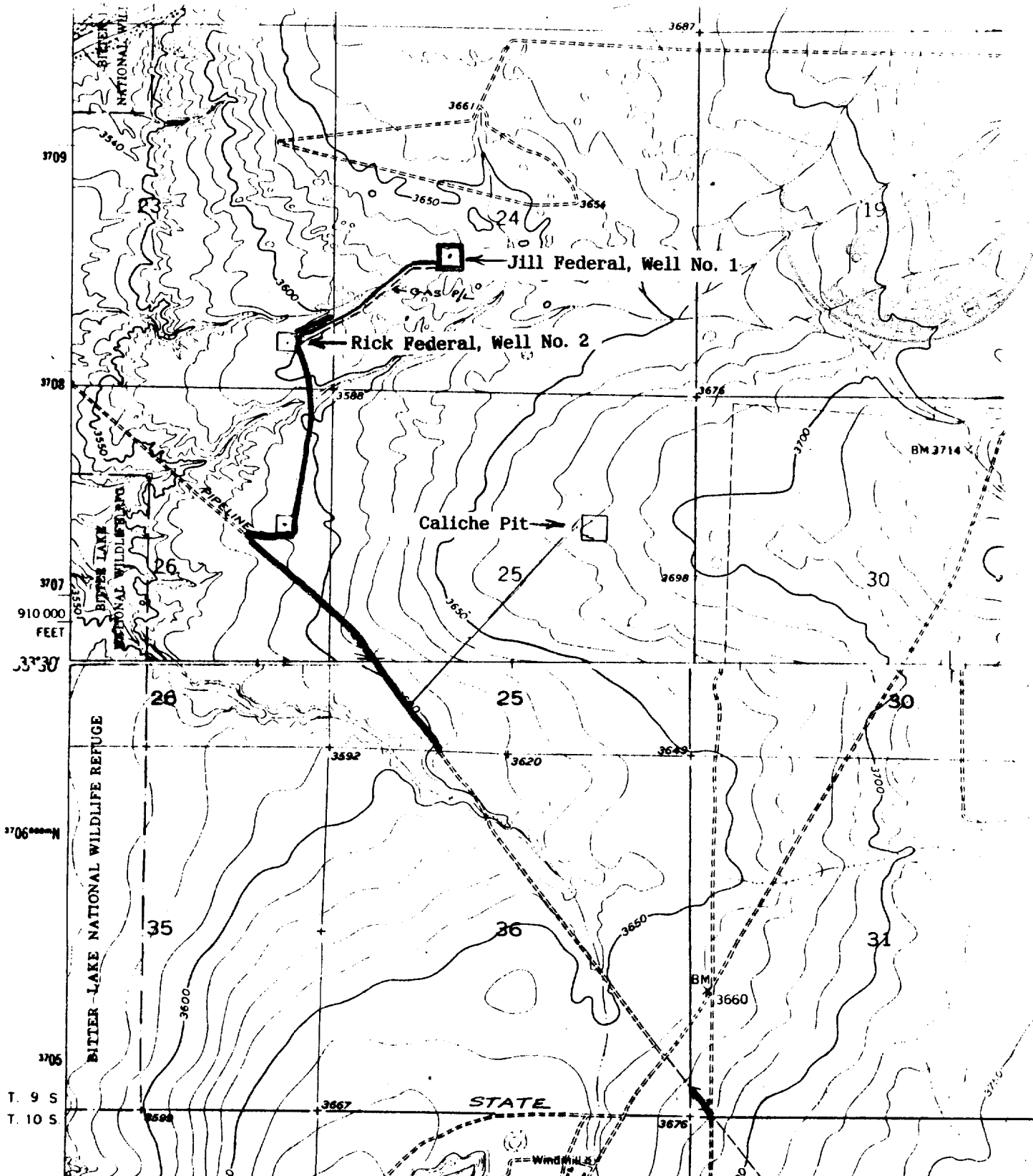


EXHIBIT "B"

McCLELLAN OIL CORPORATION

Jill Federal, Well No. 1

1910' FSL & 1650' FWL, Sec. 24-T9S-R26E

Existing Access Roads:

County Maintained:

Existing Federal ROW:

New Federal ROW:

Proposed Access Road:

Off lease ROW:

