

Form 3160-3  
(November 1983)  
(formerly 9-331C)

NM Oil Cons. Commission

Drawer DD

Artesia, NM 88210

SUBMIT IN DUPLICATE\*  
(Other instructions on  
reverse side)

30-105-62664  
Form approved.  
Budget Bureau No. 1004-0136  
Expires August 31, 1985

UNITED STATES  
DEPARTMENT OF THE INTERIOR  
BUREAU OF LAND MANAGEMENT

APPLICATION FOR PERMIT TO DRILL, DEEPEN, OR PLUG BACK

1a. TYPE OF WORK

DRILL ☒

DEEPEN ☐

PLUG BACK ☐

b. TYPE OF WELL

OIL  
WELL ☐

GAS  
WELL ☒

OTHER

SINGLE  
ZONE ☐

MULTIPLE  
ZONE ☐

2. NAME OF OPERATOR

O. C. D.  
Artesia Office  
Santa Fe Energy Operating Partners, L.P.

3. ADDRESS OF OPERATOR

500 W. Illinois, Suite 500, Midland, TX 79701

4. LOCATION OF WELL (Report location clearly and in accordance with any State requirements.)

At surface

1980' FNL, 1980' FWL, Section 15, T-14S, R-27E  
At proposed prod. zone

14. DISTANCE IN MILES AND DIRECTION FROM NEAREST TOWN OR POST OFFICE\*

6 miles southeast of Hagerman, N.M.

15. DISTANCE FROM PROPOSED\*

LOCATION TO NEAREST  
PROPERTY OR LEASE LINE, FT.  
(Also to nearest drlg. unit line, if any)

660'

16. NO. OF ACRES IN LEASE

320

17. NO. OF ACRES ASSIGNED  
TO THIS WELL

320

18. DISTANCE FROM PROPOSED LOCATION\*  
TO NEAREST WELL, DRILLING, COMPLETED,  
OR APPLIED FOR, ON THIS LEASE, FT.

N/A

19. PROPOSED DEPTH

8000'

20. ROTARY OR CABLE TOOLS

Rotary

21. ELEVATIONS (Show whether DF, RT, GR, etc.)

3429.5' GR

23.

PROPOSED CASING AND CEMENTING PROGRAM

SIZE OF HOLE	SIZE OF CASING	WEIGHT PER FOOT	SETTING DEPTH	QUANTITY OF CEMENT
17 1/2	13 3/8	48.0	300	417 cu.ft. circulated
12 1/4	8 5/8	24.0	1350	1500 cu.ft. circulated
7 7/8	4 1/2	10.5 & 11.6	8000	900 cu.ft.

13 3/8" casing will be cemented with 417 cu.ft. Class "C" with 2% Calcium Chloride to circulate to surface.

8 5/8" casing to be cement with sufficient lite cement to circulate to surface when followed by 198 cu.ft. Class "C" containing 2% Calcium Chloride.

4 1/2" casing to be cemented with sufficient Class H cement with fluid loss and friction reducing agents and 5 lb/sk KCl to cover possible producing zones with 500' of cement.

POST #D-1  
UK & API  
1-20-89

IN ABOVE SPACE DESCRIBE PROPOSED PROGRAM: If proposal is to deepen or plug back, give data on present productive zone and proposed new productive zone. If proposal is to drill or deepen directionally, give pertinent data on subsurface locations and measured and true vertical depths. Give blowout preventer program, if any.

24.

SIGNED Michael R. Burton

TITLE District Drilling Engineer

DATE 10-14-88

(This space for Federal or State office use)

PERMIT NO.

APPROVAL DATE

APPROVED BY

S/Phil Kirk

TITLE

Area Manager

DATE

JAN 4 1989

APPROVAL OF THIS APPLICATION DOES NOT WARRANT OR CERTIFY THAT THE APPLICANT HOLDS LEGAL OR EQUITABLE TITLE TO THOSE RIGHTS IN THE SUBJECT LEASE WHICH WOULD ENTITLE THE APPLICANT TO CONDUCT OPERATIONS THEREON.

PLEASE BE ADVISED THAT THERE WILL BE NO EXCAVATION OF FEDERALLY OWNED LAND FOR CONSTRUCTION OF THE ACCESS ROAD OR PAD WITHOUT PAYMENT

See Instructions on Reverse Side  
Title 18 U.S.C. Section 1001, makes it a crime for any person knowingly and willfully to make to any department or agency of the United States any false, fictitious or fraudulent statements or representations or to any matter within the jurisdiction of any such department or agency.

**NEW MEXICO OIL CONSERVATION COMMISSION  
WELL LOCATION AND ACREAGE DEDICATION PLAT**

Form C-102  
Supersedes C-128  
Effective 1-1-65

All distances must be from the outer boundaries of the Section.

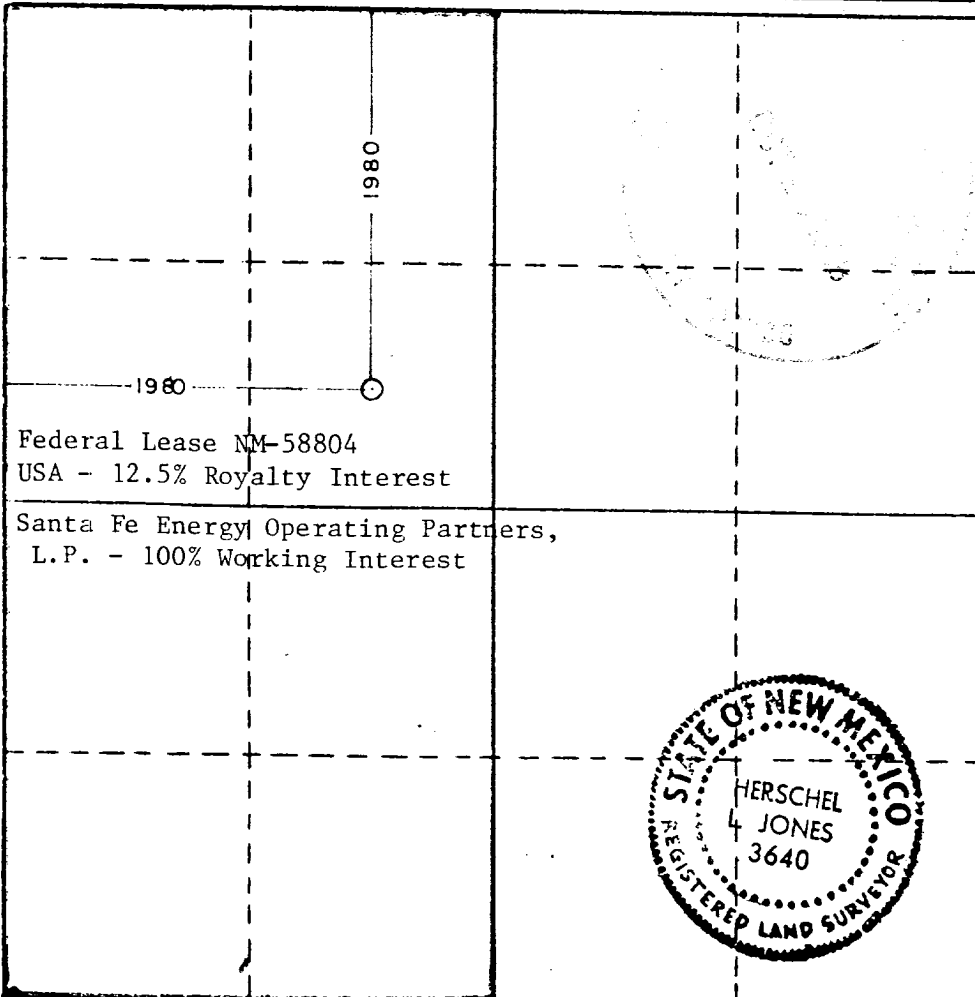
Operator <b>Santa Fe Energy Operating Partners, L. P.</b>		Lease <b>Hagerman 15 Fed.</b>		Well No. <b>1</b>
Unit Letter <b>"F"</b>	Section <b>15</b>	Township <b>14 South</b>	Range <b>27 East</b>	County <b>Chaves</b>
Actual Footage Location of Well: <div style="display: flex; justify-content: space-between;"> <span>1980 feet from the North line and</span> <span>1980 feet from the West line</span> </div>				
Ground Level Elev. <b>3429.5</b>	Producing Formation <b>Morrow</b>	Pool <b>UND. SPRINGER BASIN ATOKA-MORROW</b>	Dedicated Acreage: <b>320</b> Acres	

1. Outline the acreage dedicated to the subject well by colored pencil or hatchure marks on the plat below.
2. If more than one lease is dedicated to the well, outline each and identify the ownership thereof (both as to working interest and royalty).
3. If more than one lease of different ownership is dedicated to the well, have the interests of all owners been consolidated by communitization, unitization, force-pooling, etc?

☐ Yes    ☐ No    If answer is "yes," type of consolidation \_\_\_\_\_

If answer is "no," list the owners and tract descriptions which have actually been consolidated. (Use reverse side of this form if necessary.) \_\_\_\_\_

No allowable will be assigned to the well until all interests have been consolidated (by communitization, unitization, forced-pooling, or otherwise) or until a non-standard unit, eliminating such interests, has been approved by the Commission.



**CERTIFICATION**

I hereby certify that the information contained herein is true and complete to the best of my knowledge and belief.

Michael R. Burton

Name

Michael R. Burton

Position

District Drilling Engineer

Company

Santa Fe Energy Operating Partners, L.P.

Date

10/19/88

I hereby certify that the well location shown on this plat was plotted from field notes of actual surveys made by me or under my supervision, and that the same is true and correct to the best of my knowledge and belief.

Date Surveyed

October 12, 1988

Registered Professional Engineer  
and/or Land Surveyor

Certificate No.

3640

330 660 990 1320 1650 1980 2310 2640 2000 1500 1000 500 0

# PROPOSED BOPE AND CHOKE ARRANGEMENT

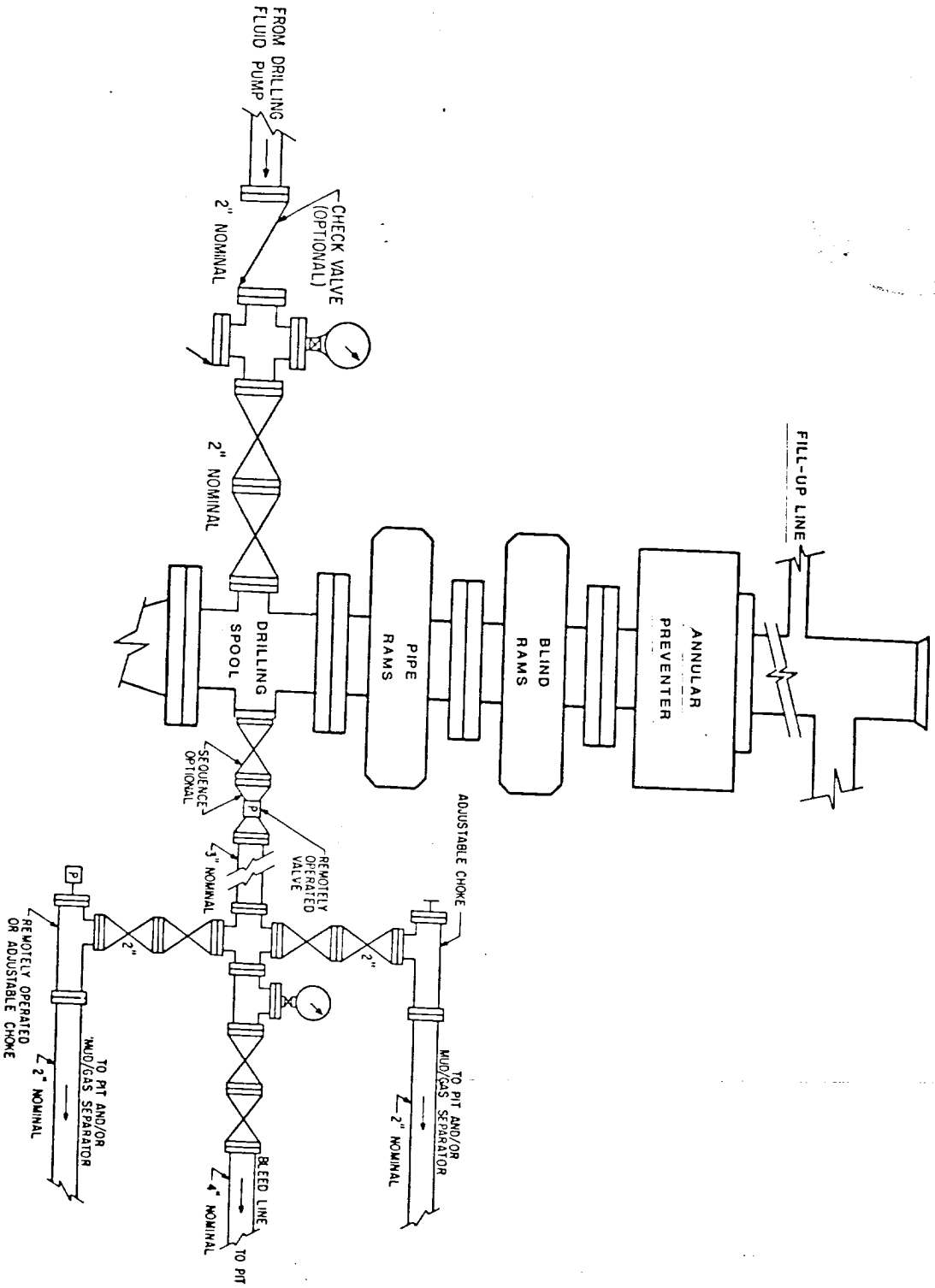


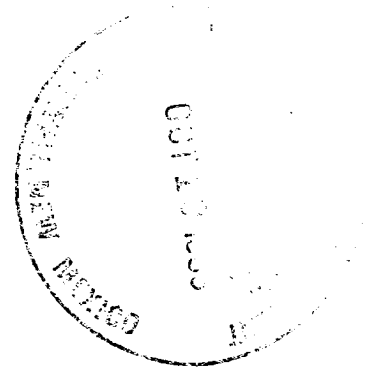
EXHIBIT B

APPLICATION FOR DRILLING  
SANTA FE ENERGY OPERATING PARTNERS, L.P.  
Hagerman 15 Federal No. 1

In conjunction with form 9-331C, Application to Drill subject well, Santa Fe Energy Operating Partners, L.P., submits the following ten items of pertinent information in accordance with BLM requirements.

1. The geologic surface formation is sand.
2. The estimated tops of geologic markers are as follows:

San Andres	1300'
Abo	4830'
Wolfcamp	5895'
Upper Penn	6660'
Strawn	7255'
Morrow-Clastics	7581'
Mississippian	7825'
TD	8000'



3. The estimated depth at which water, oil, or gas formations are expected to be encountered:

Water	Water is not expected to be encountered.
Oil or Gas	Morrow - 7581'

4. Proposed casing program: See Form 9-331C and Exhibit A.
5. Pressure control Equipment: See Form 9-331C and Exhibit B. *5000 PSI*
6. Drilling Fluid Program: See Exhibit C.
7. Auxiliary Equipment: See Exhibit D.
8. Testing, Logging and Coring Programs:

Drill Stem Test (all DST's to be justified by a valid show of oil or gas):

Morrow 7581'

Logging:

Logging from 1350' - TD:  
Dual Laterolog with Gamma Ray  
Neutron-Density with Gamma Ray  
Computer Process Log over selected intervals  
Neutron with Gamma Ray from surface to 1350'

Application for Drilling  
Hagerman 15 Federal No. 1  
Page 2

9. Abnormally high pressured zones are not expected at this location.
10. Starting Date: As soon as possible.

Michael R. Burton  
10-14-88

MRB:dw-799  
Attachments

DEXTER EAST

UNITED STATES  
DEPARTMENT OF THE INTERIOR  
GEOLOGICAL SURVEY

2. 27 E

33°07'30"  
104°15'

1230'

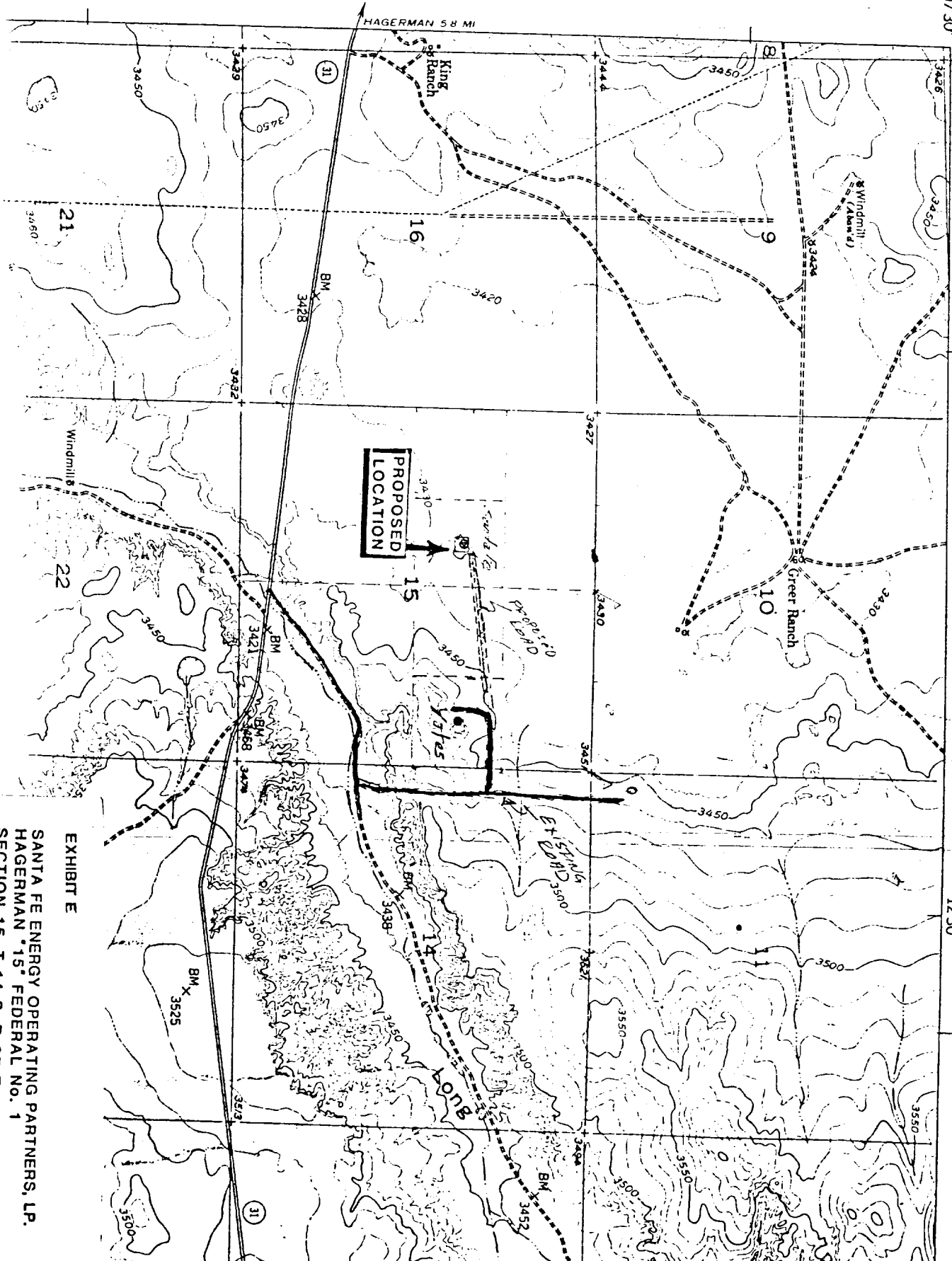


EXHIBIT E

SANTA FE ENERGY OPERATING PARTNERS, LP.  
HAGERMAN 15 FEDERAL NO. 1  
SECTION 15, T 14 S, R 27 E, 1980 FNL, 1980 F  
CHAVES CO., NEW MEXICO

RESERVE PIT

EXHIBIT G  
WELL SITE LAYOUT  
SANTA FE ENERGY OPERATING PARTNERS, L.P.  
HAGERMAN "15" FEDERAL No. 1  
SECTION 15, T 14 S, R 27 E, 1980 FNL, 1980 FWL  
CHAVES CO., NEW MEXICO

