

STATE OF NEW MEXICO
ENERGY AND MINERALS DEPARTMENT

OIL CONSERVATION DIVISION

P. O. BOX 2088

SANTA FE, NEW MEXICO 87501

RECEIVED

FEB 10 '89

O. C. D.
ARTESIA OFFICE

30-005-6266.P
Form C-101
Revised 10-1-78

NO. OF COPIES RECEIVED	
DISTRIBUTION	
SANTA FE	✓
FILE	✓
U.S.G.S.	✓
LAND OFFICE	✓
OPERATOR	✓

5A. Indicate Type of Lease
STATE ☒ REC ☐

5. State Oil & Gas Lease No.
LG-9154

APPLICATION FOR PERMIT TO DRILL, DEEPEN, OR PLUG BACK

1a. Type of Work DRILL <input checked="" type="checkbox"/> DEEPEN <input type="checkbox"/> PLUG BACK <input type="checkbox"/>		7. Unit Agreement Name
b. Type of Well OIL WELL <input type="checkbox"/> GAS WELL <input checked="" type="checkbox"/> OTHER <input type="checkbox"/> SINGLE ZONE <input type="checkbox"/> MULTIPLE ZONE <input type="checkbox"/>		8. Farm or Lease Name Energy AFY State
2. Name of Operator Yates Petroleum Corporation		9. Well No. 2
3. Address of Operator 105 South Fourth Street - Artesia, NM 88210		10. Field and Pool, or Wildcat Pool Ranch Wolfcamp Pool Ranch Precambrian
4. Location of Well UNIT LETTER K LOCATED 1980 FEET FROM THE South LINE AND 1980 FEET FROM THE West LINE OF SEC. 36 TWP. 9S RGE. 26E NMPM		12. County Chaves
19. Proposed Depth 6500'		19A. Formation Ordovician
20. Rotary or C.T. Rotary		
21. Elevations (show whether DF, HT, etc.) 3870' GR	21A. Kind & Status Plug. Bond Blanket	21B. Drilling Contractor Undesignated
22. Approx. Date Work will start ASAP		

23.

PROPOSED CASING AND CEMENT PROGRAM

SIZE OF HOLE	SIZE OF CASING	WEIGHT PER FOOT	SETTING DEPTH	SACKS OF CEMENT	EST. TOP
12-1/4"	8-5/8"	24# J-55	Approx. 1150'	600 sacks	Circulate
7-7/8"	5-1/2"	15.5# J-55	TD	300 sacks	

We propose to drill and test the Ordovician and intermediate formations. Approximately 1150' of surface casing will be set and cement circulated. If commercial, production casing will be run and cemented with adequate cover, perforated and stimulated as needed for production.

MUD PROGRAM: FW gel/LCM to 1150', cut brine to 4450', SW gel/starch to TD

BOP PROGRAM: BOP's will be installed at the offset and tested daily

GAS NOT DEDICATED

POST ID-1
NL & API
2-17-89

180 DAYS
8/13/89
UNLESS OTHERWISE UNDERWAY

IN ABOVE SPACE DESCRIBE PROPOSED PROGRAM: IF PROPOSAL IS TO DEEPEN OR PLUG BACK, GIVE DATA ON PRESENT PRODUCTIVE ZONE AND PROPOSED NEW PRODUCTIVE ZONE. GIVE BLOWOUT PREVENTER PROGRAM, IF ANY.

I hereby certify that the information above is true and complete to the best of my knowledge and belief.

Signed Ken De la Cruz Title Landman Date February 9, 1989

(This space for State Use)

Original Signed By
Mike Williams

APPROVED BY Mike Williams TITLE DATE FEB 13 1989

CONDITIONS OF APPROVAL, IF ANY:

**NEW MEXICO OIL CONSERVATION COMMISSION
WELL LOCATION AND ACREAGE DEDICATION PLAT**

Form C-102
Supersedes C-128
Effective 1-1-65

All distances must be from the outer boundaries of the Section.

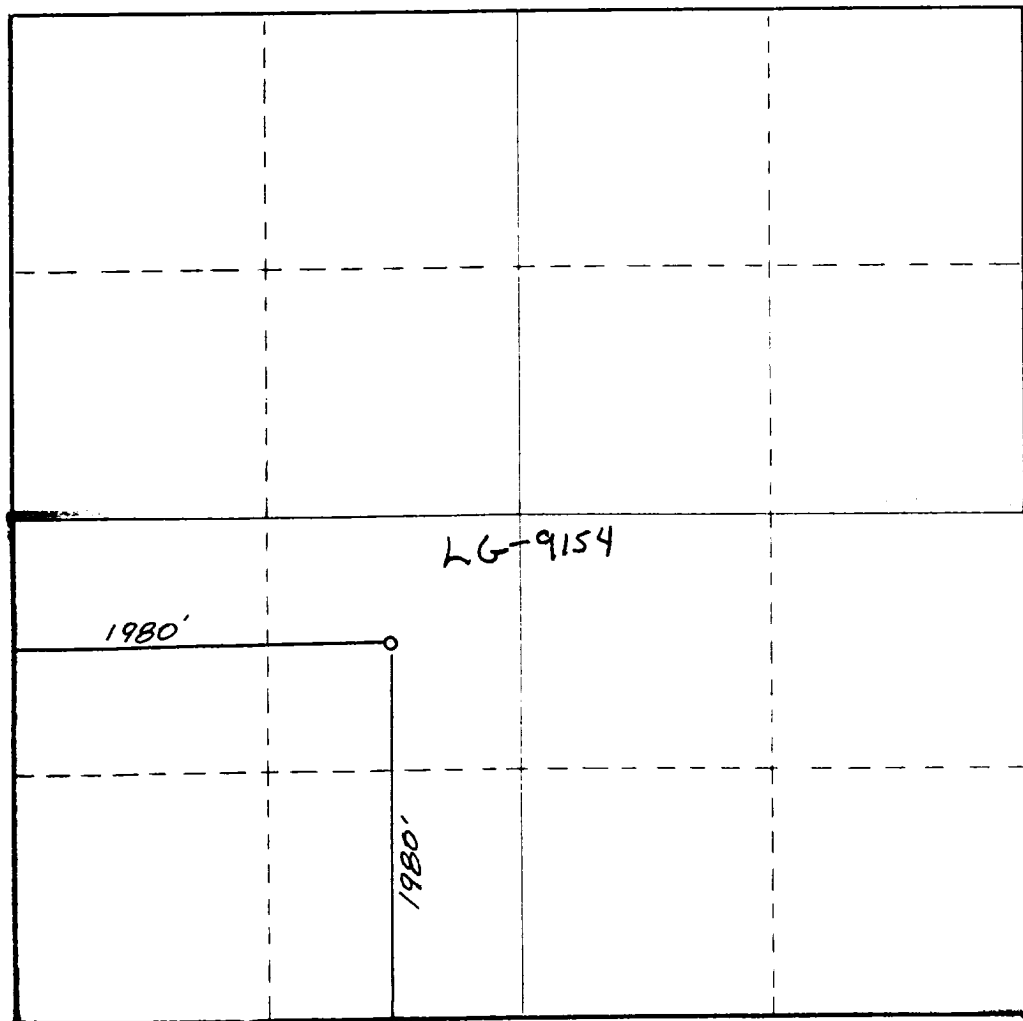
Operator YATES PETROLEUM CORPORATION			Lease Energy AFY State		Well No. 2
Unit Letter K	Section 36	Township 9 South	Range 26 East	County Chaves County, N.M.	
Actual Footage Location of Well: <div style="display: flex; justify-content: space-between;"> 1980 feet from the South line and 1980 feet from the West line </div>					
Ground Level Elev. 3870.	Producing Formation Ordovician	Pool Four Ranch Wellcamp Permian	Dedicated Acreage: 320 Acres		

1. Outline the acreage dedicated to the subject well by colored pencil or hachure marks on the plat below.
2. If more than one lease is dedicated to the well, outline each and identify the ownership thereof (both as to working interest and royalty).
3. If more than one lease of different ownership is dedicated to the well, have the interests of all owners been consolidated by communitization, unitization, force-pooling, etc?

☐ Yes ☐ No If answer is "yes," type of consolidation _____

If answer is "no," list the owners and tract descriptions which have actually been consolidated. (Use reverse side of this form if necessary.) _____

No allowable will be assigned to the well until all interests have been consolidated (by communitization, unitization, forced-pooling, or otherwise) or until a non-standard unit, eliminating such interests, has been approved by the Commission.



CERTIFICATION

I hereby certify that the information contained herein is true and complete to the best of my knowledge and belief.

Ken Beardemphl
Name

KEN BEARDEMPHL

Position
LANDMAN

Company
YATES PETROLEUM CORP.

Date
2-9-89

I hereby certify that the well location shown on this plat was plotted from field notes of accurate surveys made by me or under my supervision, and that the same are true and correct to the best of my knowledge and belief.

Date Surveyed
February 6, 1989

Registered Professional Engineer and/or Land Surveyor

Dan R. Reddy
Certificate No.

NM PE&LS NO. 5412



YATES PETROLEUM CORPORATION

