

UNITED STATES
DEPARTMENT OF THE INTERIOR
BUREAU OF LAND MANAGEMENT

APPLICATION FOR PERMIT TO DRILL, DEEPEN, OR PLUG BACK

1a. TYPE OF WORK

DRILL ☒

DEEPEN ☐

PLUG BACK ☐

b. TYPE OF WELL

OIL
WELL ☐

GAS
WELL ☒

OTHER

SINGLE
ZONE ☐

MULTIPLE
ZONE ☐

2. NAME OF OPERATOR

McClellan Oil Corporation

RECEIVED

3. ADDRESS OF OPERATOR

P. O. Drawer 730 Roswell, NM 88202

4. LOCATION OF WELL (Report location clearly and in accordance with any State requirements)

At surface

1525' FSL & 1915' FWL

At proposed prod. zone

same

14. DISTANCE IN MILES AND DIRECTION FROM NEAREST TOWN OR POST OFFICE*

18 miles northeast of Roswell, NM

15. DISTANCE FROM PROPOSED*

LOCATION TO NEAREST

PROPERTY OR LEASE LINE, FT.

(Also to nearest drlg. unit line, if any)

1525'

16. NO. OF ACRES IN LEASE

1400

17. NO. OF ACRES ASSIGNED
TO THIS WELL

160

18. DISTANCE FROM PROPOSED LOCATION*

TO NEAREST WELL, DRILLING, COMPLETED,
OR APPLIED FOR, ON THIS LEASE, FT.

2418'

19. PROPOSED DEPTH

4500'

20. ROTARY OR CABLE TOOLS

Rotary

21. ELEVATIONS (Show whether DF, RT, GR, etc.)

3623' GL

22. APPROX. DATE WORK WILL START*

March 1, 1989

23.

PROPOSED CASING AND CEMENTING PROGRAM

SIZE OF HOLE	SIZE OF CASING	WEIGHT PER FOOT	SETTING DEPTH	QUANTITY OF CEMENT
12 1/4"	8 5/8"	23#	700'	450 sx Class "C" circulated
7 7/8"	4 1/2"	10.5#	4,500'	350 sx " " "C"

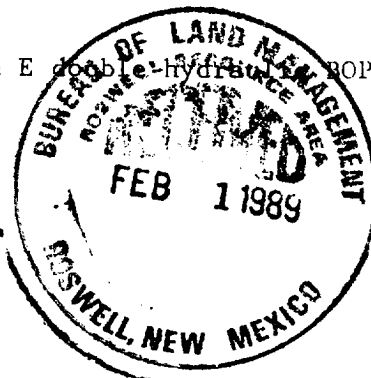
Mud Program:

Drill to top of Abo with fresh water. Mud up 100' above Abo with 9.5 ppg wt.,
40 Vis. mud with 15 cc water loss.

BCP Program:

Will install and test daily a 3000# wp Shaffer Type E double-hydrate BOP with
4" pipe and blind rams with koomeg closing unit.

Gas is dedicated.



Post ID-1.
NL & API
3-3-89

IN ABOVE SPACE DESCRIBE PROPOSED PROGRAM: If proposal is to deepen or plug back, give data on present productive zone and proposed new productive zone. If proposal is to drill or deepen directionally, give pertinent data on subsurface locations and measured and true vertical depths. Give blowout preventer program, if any.

24.

SIGNED

George R. Smith

TITLE

Agent for:

McClellan Oil Corporation

DATE

January 31, 1989

(This space for Federal or State office use)

PERMIT NO.

APPROVAL DATE

APPROVED BY

S/Phil Kirk

TITLE

Area Manager

DATE

FEB 22 1989

CONDITIONS OF APPROVAL, IF ANY:

APPROVAL OF THIS APPLICATION DOES NOT WARRANT OR
CERTIFY THAT THE APPLICANT HOLDS LEGAL OR EQUITABLE
TITLE TO THOSE RIGHTS IN THE SUBJECT LEASE WHICH WOULD
ENTITLE THE APPLICANT TO CONDUCT OPERATIONS THEREON.

PLEASE BE ADVISED THAT THERE WILL BE NO EXCAVATION
OF FEDERALLY OWNED MINERAL MATERIAL FOR CONSTRUCTION
OF THE ACCESS ROAD OR PAD WITHOUT PAYMENT
IN ADVANCE.

U.S.C. Section 1001, makes it a crime for any person knowingly and willfully to make to any department or agency of the
United States any false, fictitious, or fraudulent statements or representations as to any matter within its jurisdiction.

All distances must be from the outer boundaries of the Section.

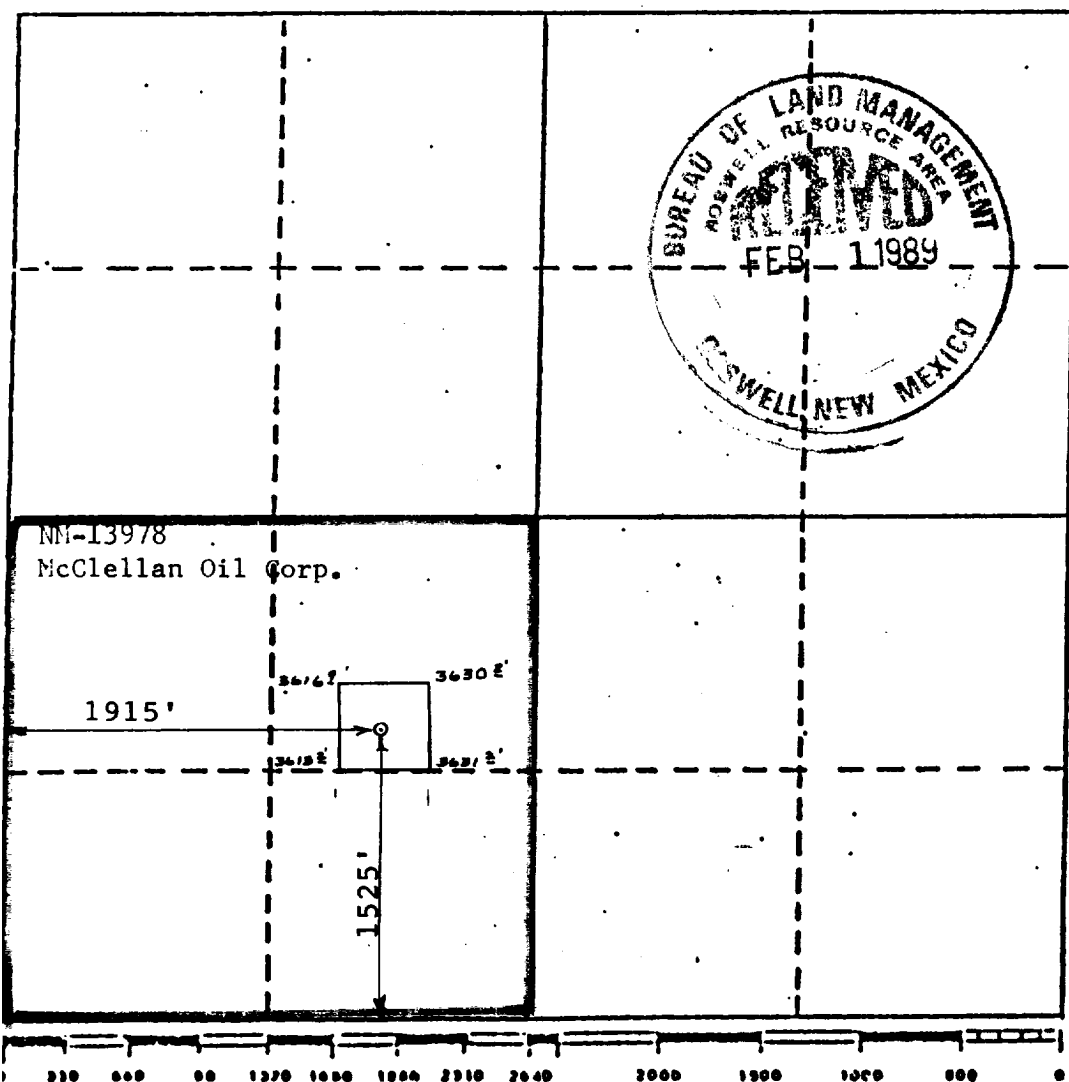
Operator McClellan Oil Corporation			Lease Leeman Federal			Well No. 5		
Unit Letter K	Section 1	Township 9 South	Range 25 East	County Chaves				
Actual Footage Location of Well: 1525 feet from the South line and 1915 feet from the West line								
Ground Level Elev. 3623		Producing Formation Abo		Pool 50. Pecos Slope Abo			Dedicated Acreage 160 Acres	

1. Outline the acreage dedicated to the subject well by colored pencil or hachure marks on the plat below.
2. If more than one lease is dedicated to the well, outline each and identify the ownership thereof (both as to working interest and royalty).
3. If more than one lease of different ownership is dedicated to the well, have the interests of all owners been consolidated by communitization, unitization, force-pooling, etc?

☐ Yes ☐ No If answer is "yes," type of consolidation _____

If answer is "no," list the owners and tract descriptions which have actually been consolidated. (Use reverse side of this form if necessary.) _____

No allowable will be assigned to the well until all interests have been consolidated (by communitization, unitization, forced-pooling, or otherwise) or until a non-standard unit, eliminating such interests, has been approved by the Division.



CERTIFICATION

I hereby certify that the information contained herein is true and complete to the best of my knowledge and belief.

George R. Smith

Name
George R. Smith

Position
Agent for:

Company
McClellan Oil Corp.

Date
January 31, 1989

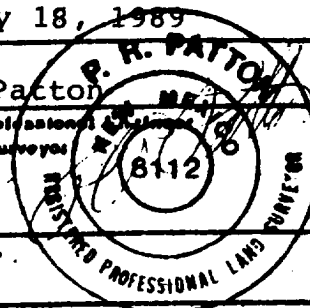
I hereby certify that the well location shown on this plat was plotted from field notes of actual surveys made by me or under my supervision, and that the same is true and correct to the best of my knowledge and belief.

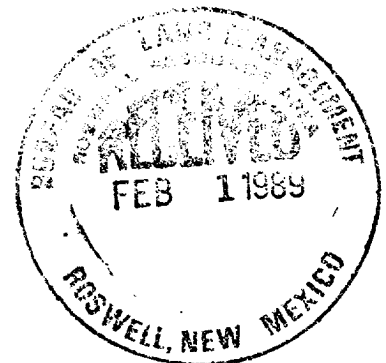
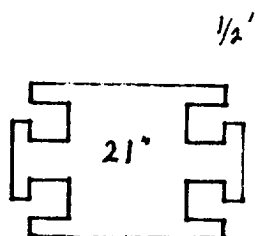
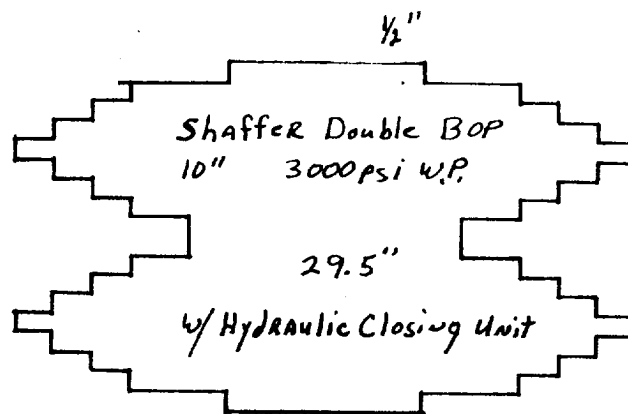
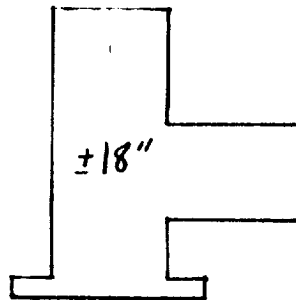
January 18, 1989

Date Surveyed
P. R. Patton

Registered Professional Engineer
and/or Land Surveyor
8112

Certificate No. _____





APPLICATION FOR DRILLING

McCLELLAN OIL CORPORATION
Leeman Federal, Well No. 5
1525' FSL & 1915' FWL, Sec. 1-T9S-R25E
Chaves County, New Mexico
Lease No.: NM-13978
(Development Well)

In conjunction with Form 3160-3, Application for Permit to Drill subject well, McClellan Oil Corporation submits the following items of pertinent information in accordance with BLM requirements:

1. The geologic surface formation is recent Permian with quaternary alluvium and other surficial deposits.
2. The estimated tops of geologic markers are as follows:

San Andres	610'	Abo	3900'
Glorieta	1680'	T.D.	4500'
Tubb	3175'		

3. The estimated depths at which water, oil or gas formations are anticipated to encountered:

Water: Surface water between 100' to 300'.

Oil: None expected.

Gas: In the Abo below 3900'.

4. Proposed Casing Program: See Form 3160-3.
5. Pressure Control Equipment: See Form 3160-3 and Exhibit "E".
6. Mud Program: See Form 3160-3.
7. Auxiliary Equipment: Blowout preventer, gas detector, kelly cock, pit level monitor, flow sensors and stabbing valve.
8. Testing, Logging, and Coring Program:

Drill Stem Tests: None planned.

Logging: From surface Casing to T.D.: G/R, CNL-LDT, DLL,

Coring: None planned.
9. No abnormal pressures or temperatures are anticipated. In the event abnormal pressures are encountered the proposed mud program will be modified.
10. Anticipated starting date: March 1, 1989.
Anticipated completion of drilling operations: Approximately 35 days.



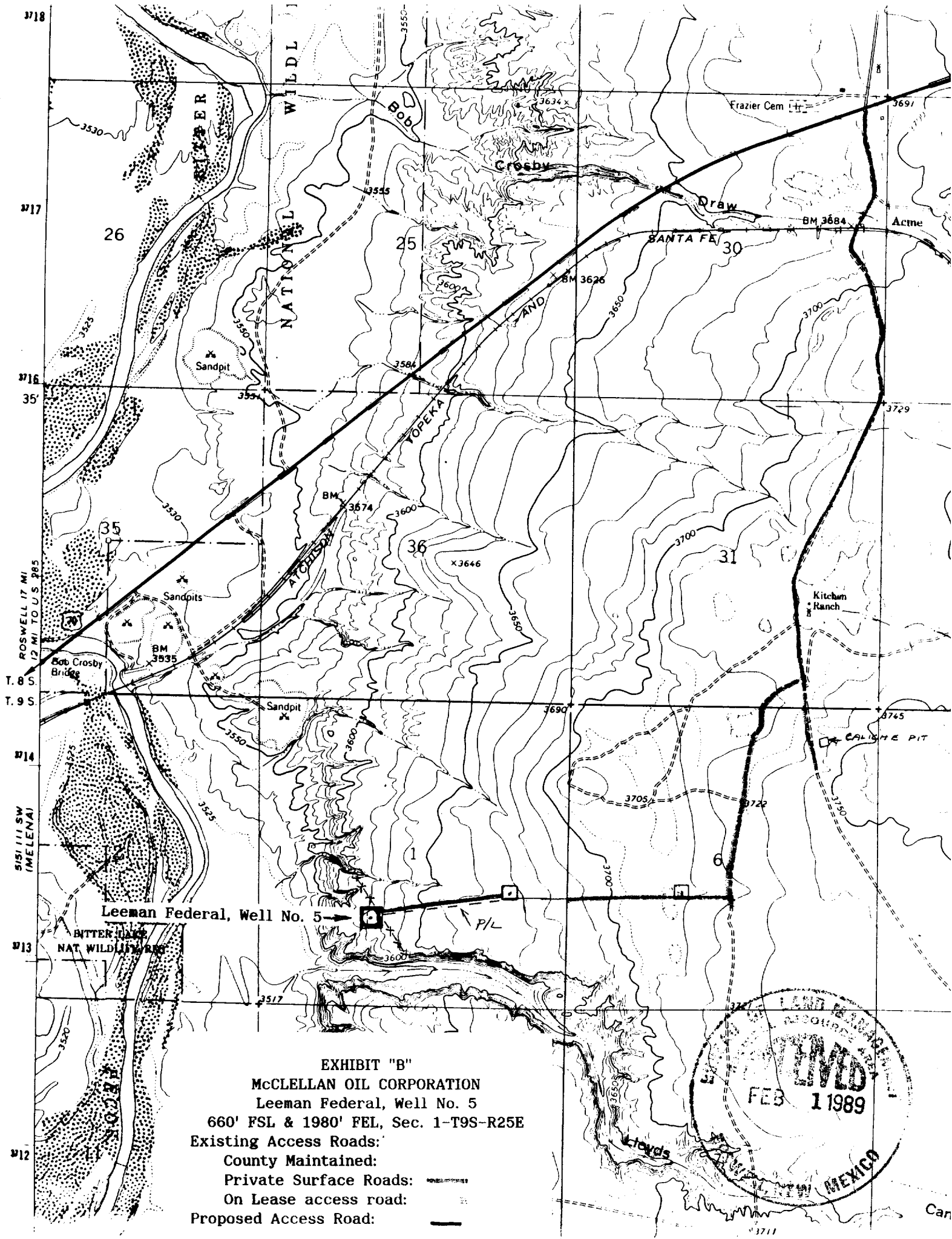
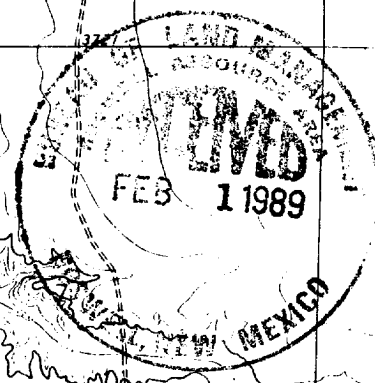
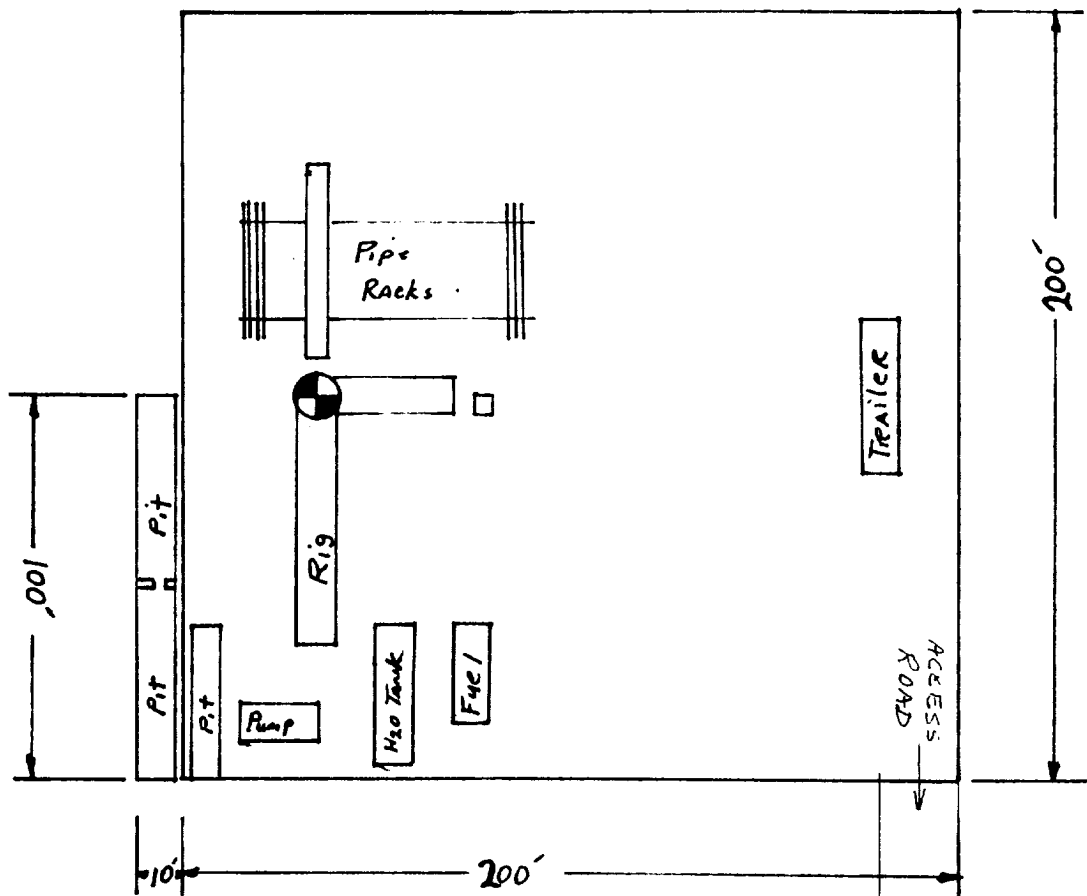


EXHIBIT "B"
 McCLELLAN OIL CORPORATION
 Leeman Federal, Well No. 5
 660' FSL & 1980' FEL, Sec. 1-T9S-R25E
 Existing Access Roads:
 County Maintained:
 Private Surface Roads:
 On Lease access road:
 Proposed Access Road:





FENCE— X ——— X ——— X ——— X ——— X ——— X ——— X ——— X

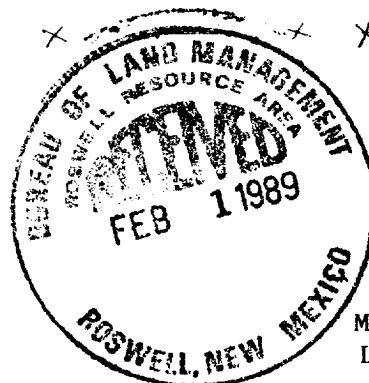


EXHIBIT "D"
McCLELLAN OIL CORPORATION
Leeman Federal, Well No. 5
Rig Layout