

Drawer DD
Artesia, NM 88210

UNITED STATES
DEPARTMENT OF THE INTERIOR
BUREAU OF LAND MANAGEMENT

RECEIVED
SUBMIT IN PLICATE*
(Other instructions on reverse side)

30-005-62676
Form approved.
Budget Bureau No. 1004-0136
Expires August 31, 1985

FEB 28 '89

APPLICATION FOR PERMIT TO DRILL, DEEPEN, OR PLUG BACK

1a. TYPE OF WORK

DRILL ☒

DEEPEN ☐

PLUG BACK ☐

b. TYPE OF WELL

OIL WELL ☐

GAS WELL ☒

OTHER

SINGLE ZONE ☐

MULTIPLE ZONE ☐

2. NAME OF OPERATOR

McClellan Oil Corporation

3. ADDRESS OF OPERATOR

P. O. Drawer 730 Roswell, NM 88202

4. LOCATION OF WELL (Report location clearly and in accordance with any State requirements.)

At surface

330' FNL & 330' FEL

At proposed prod. zone

same

14. DISTANCE IN MILES AND DIRECTION FROM NEAREST TOWN OR POST OFFICE*

17 miles northeast of Roswell, NM

15. DISTANCE FROM PROPOSED*

LOCATION TO NEAREST

PROPERTY OR LEASE LINE, FT.

(Also to nearest drig. unit line, if any)

330'

18. DISTANCE FROM PROPOSED LOCATION*

TO NEAREST WELL, DRILLING, COMPLETED,

OR APPLIED FOR, ON THIS LEASE, FT.

1682'

16. NO. OF ACRES IN LEASE

1872.48

19. PROPOSED DEPTH

4425'

17. NO. OF ACRES ASSIGNED

TO THIS WELL

160

20. ROTARY OR CABLE TOOLS

Rotary

21. ELEVATIONS (Show whether DF, RT, GR, etc.)

3594' GL

22. APPROX. DATE WORK WILL START*

March 15, 1989

23.

PROPOSED CASING AND CEMENTING PROGRAM

SIZE OF HOLE	SIZE OF CASING	WEIGHT PER FOOT	SETTING DEPTH	QUANTITY OF CEMENT
12 1/4"	8 5/8"	23#	900'	450 sx class "C" circulated
7 7/8"	4 1/2"	10.5#	4425'	350 sx " " "

Mud Program:

Drill to top of Abo with fresh water. Mud up 100' above Abo with 9.5 ppg wt., 40 Vis. mud and 15 cc water loss.

BOP Specification:

Will install and test daily a 3000# wp Shaffer Type E double hydraulic BOP with 4" pipe and blind rams with koomeg closing unit.

Gas is dedicated.

POST ID-1
NL & API
3-10-89

IN ABOVE SPACE DESCRIBE PROPOSED PROGRAM: If proposal is to deepen or plug back, give data on present productive zone and proposed new productive zone. If proposal is to drill or deepen directionally, give pertinent data on subsurface locations and measured and true vertical depths. Give blowout preventer program, if any.

24.

Agent for:

SIGNED

George Smith

TITLE

McClellan Oil Corporation

DATE

February 9, 1989

(This space for Federal or State office use)

PERMIT NO.

APPROVAL DATE

FEB 23 1989

APPROVED BY

S/Phil Kirk

TITLE

Area Manager

DATE

CONDITIONS OF APPROVAL, IF ANY:

APPROVAL OF THIS APPLICATION DOES NOT WARRANT OR CERTIFY THAT THE APPLICANT HOLDS LEGAL OR EQUITABLE TITLE TO THOSE RIGHTS IN THE SUBJECT LEASE WHICH WOULD ENTITLE THE APPLICANT TO CONDUCT OPERATIONS THEREON.

PLEASE BE ADVISED THAT THERE WILL BE NO EXCAVATION OF FEDERALLY OWNED MINERAL MATERIAL FOR CONSTRUCTION OF THE ACCESS ROAD OR PAD WITHOUT PAYMENT IN ADVANCE.

Section 1001, makes it a crime for any person knowingly and willfully to make to any department or agency of the States any false, fraudulent statements or representations as to any matter within its jurisdiction.

All distances must be from the outer boundaries of the Section.

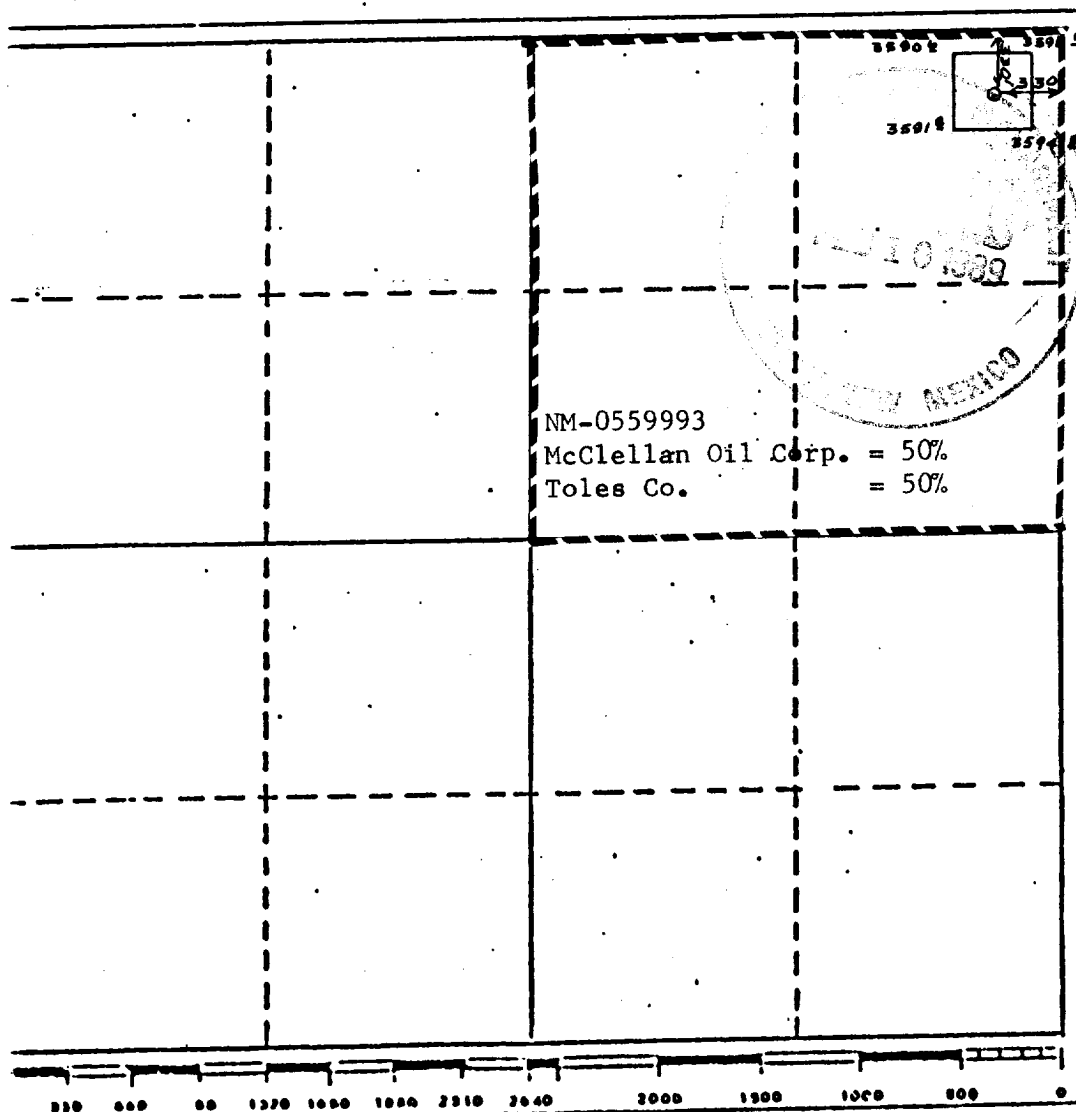
Operator McClellan Oil Corporation			Lease M M Federal com			Well No. 10
Unit Letter A	Section 35	Township 9 South	Range 25 East	County Chaves		
Actual Footage Location of Well: 330 feet from the North line and 330 feet from the East line						
Ground Level Elev. 3594'	Producing Formation Abo		Post 6 Pecos Slope Abo		Dedicated Acres 160 Acres	

1. Outline the acreage dedicated to the subject well by colored pencil or hatchure marks on the plat below.
2. If more than one lease is dedicated to the well, outline each and identify the ownership thereof (both as to working interest and royalty).
3. If more than one lease of different ownership is dedicated to the well, have the interests of all owners been consolidated by communitization, unitization, force-pooling, etc?

☐ Yes ☐ No If answer is "yes" type of consolidation _____

If answer is "no" list the owners and tract descriptions which have actually been consolidated. (Use reverse side of this form if necessary.) _____

No allowable will be assigned to the well until all interests have been consolidated (by communitization, unitization, forced-pooling, or otherwise) or until a non-standard unit, eliminating such interests, has been approved by the Division.



CERTIFICATION

I hereby certify that the information contained herein is true and complete to the best of my knowledge and belief.

George R. Smith
Name
George R. Smith
Position
Agent for:
Company
McClellan Oil Corporation
Date
February 9, 1989

I hereby certify that the well location shown on this plat was plotted from field notes of actual surveys made by me or under my supervision, and that the same is true and correct to the best of my knowledge and belief.

January 18, 1989

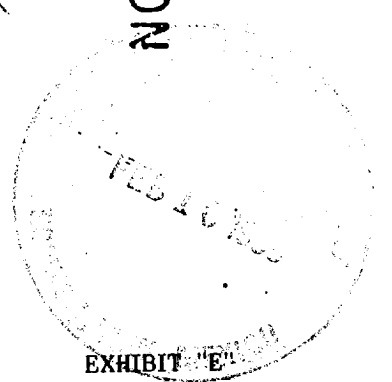
Date Surveyed
P. R. Patton
Registered Professional Land Surveyor
8112

Certificate No.

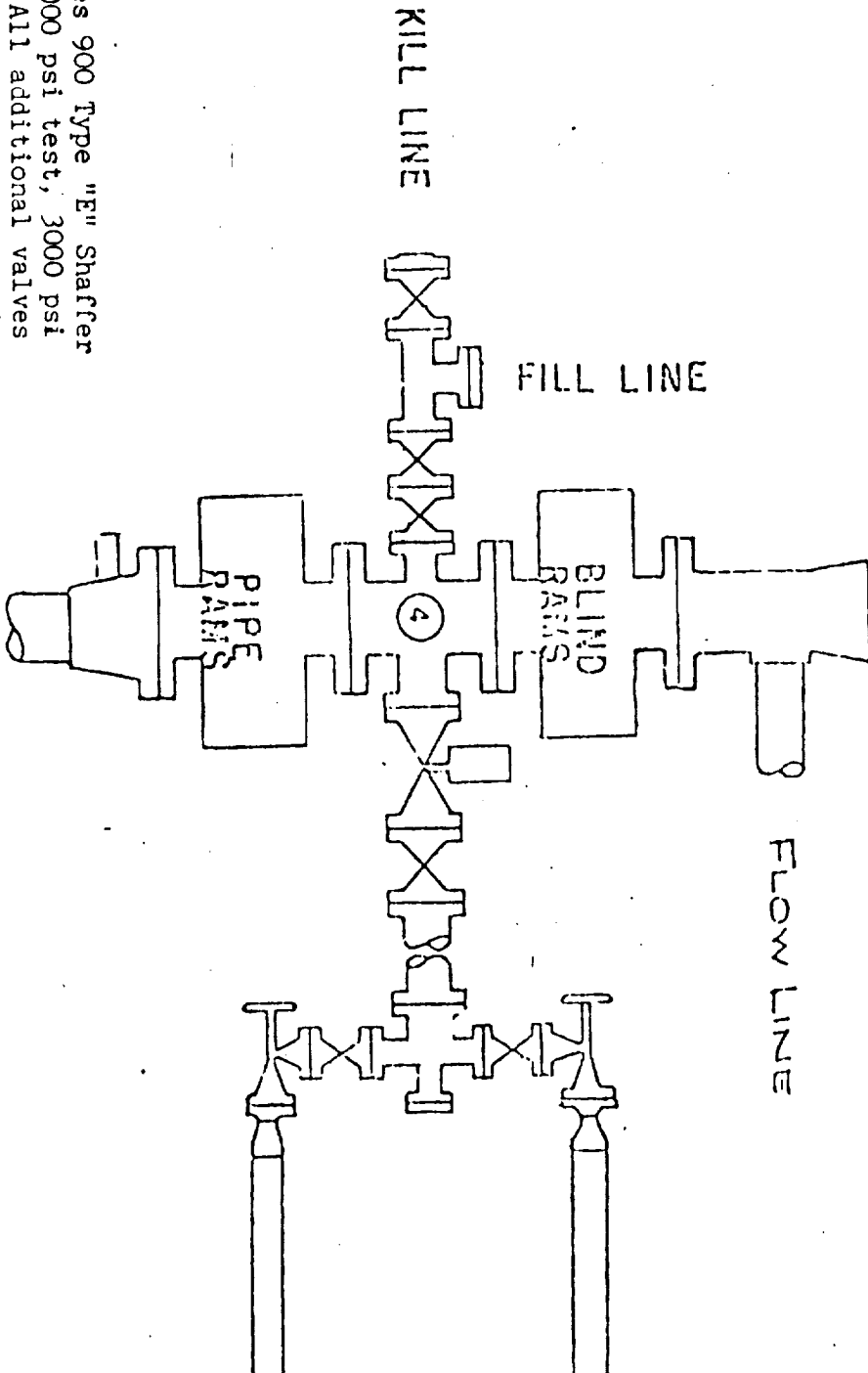
330 660 990 1320 1650 1980 2310 2640 2970 3300 3630 3960 4290 4620 4950 5280 5610 5940 6270 6600

BLOWOUT PREVENTER SPECIFICATION

WEK DRILLING CO., INC. - Rig 1 & 3



McCLELLAN OIL CORPORATION
MM Federal, Well No. 10
BOP Specifications



BOP's are 10" Series 900 Type "E" Shaffer Double Hydraulic 6000 psi test, 3000 psi working pressure. All additional valves & connections are the same test & working pressures.

APPLICATION FOR DRILLING

McCLELLAN OIL CORPORATION
MM Federal, Well No. 10
330' FNL & 330' FEL, Sec. 35-T9S-R25E
Chaves County, New Mexico
Lease No.: NM-0559993
(Development Well)

In conjunction with Form 3160-3, Application for Permit to Drill subject well, McClellan Oil Corporation submits the following items of pertinent information in accordance with BLM requirements:

1. The geologic surface formation is recent Permian with quaternary alluvium and other surficial deposits.
2. The estimated tops of geologic markers are as follows:

San Andres	510'	Abo	3825'
Glorieta	1600'	T.D.	4425'
Tubb	3100'		

3. The estimated depths at which water, oil or gas formations are anticipated to encountered:

Water: Surface water between 100' to 300'.

Oil: None expected.

Gas: In the Abo below 3825'.

4. Proposed Casing Program: See Form 3160-3.
5. Pressure Control Equipment: See Form 3160-3 and Exhibit "E".
6. Mud Program: See Form 3160-3.
7. Auxiliary Equipment: Blowout preventer, gas detector, kelly cock, pit level monitor, flow sensors and stabbing valve.
8. Testing, Logging, and Coring Program:

Drill Stem Tests: None planned.

Logging: From surface Casing to T.D.: G/R, CNL-LDT, DLL,

Coring: None planned.
9. No abnormal pressures or temperatures are anticipated. In the event abnormal pressures are encountered the proposed mud program will be modified.
10. Anticipated starting date: March 15, 1989.
Anticipated completion of drilling operations: Approximately 35 days.

DEPARTMENT OF THE INTERIOR GEOLOGICAL SURVEY

°22'30"

59°00'E

560

R. 25 E. R. 26 E.

20' 52

MM Federal, Well No. 10

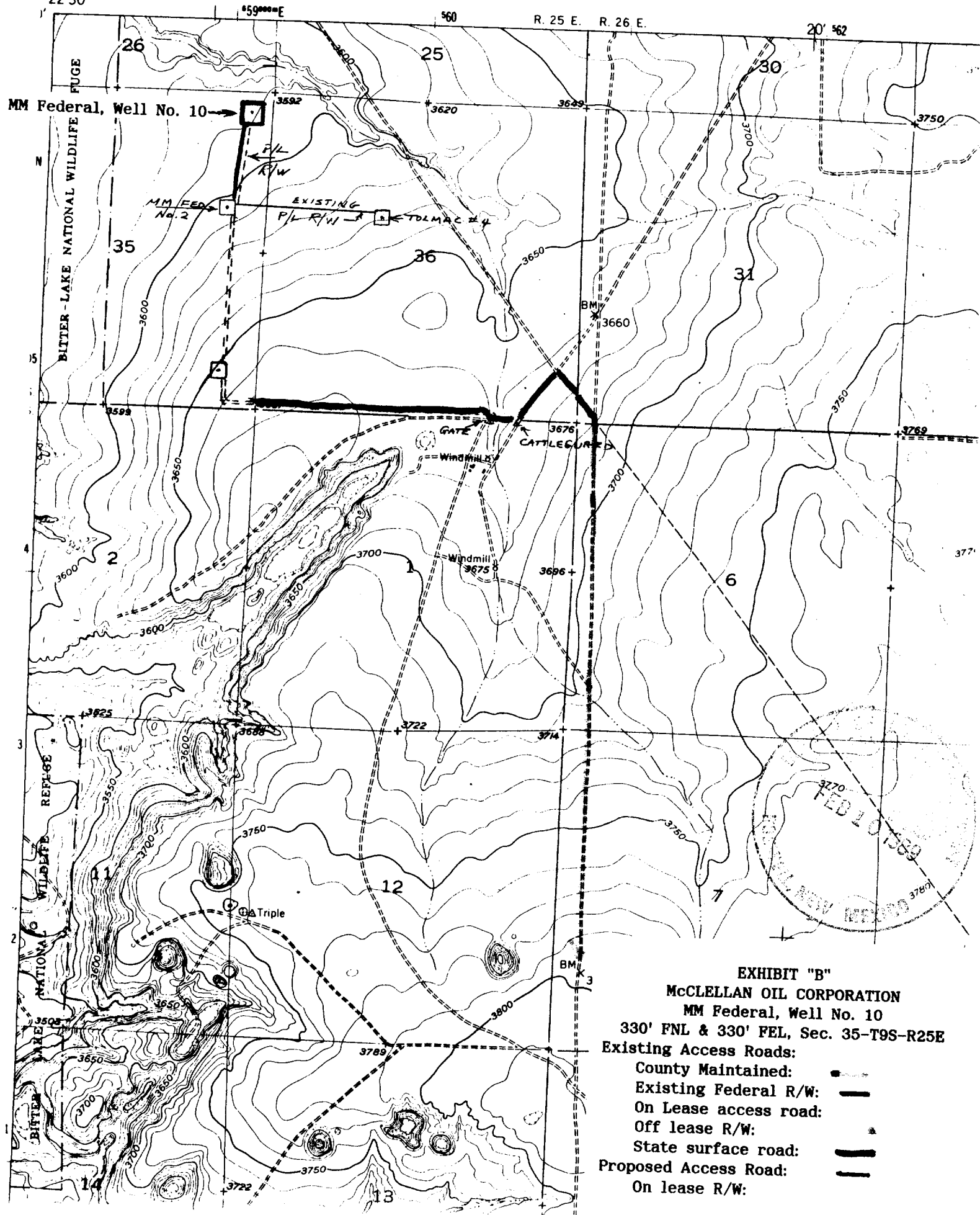


EXHIBIT "B"

McCLELLAN OIL CORPORATION

MM Federal, Well No. 10

330' FNL & 330' FEL, Sec. 35-T9S-R25E

Existing Access Roads:

County Maintained:

Existing Federal R/W:

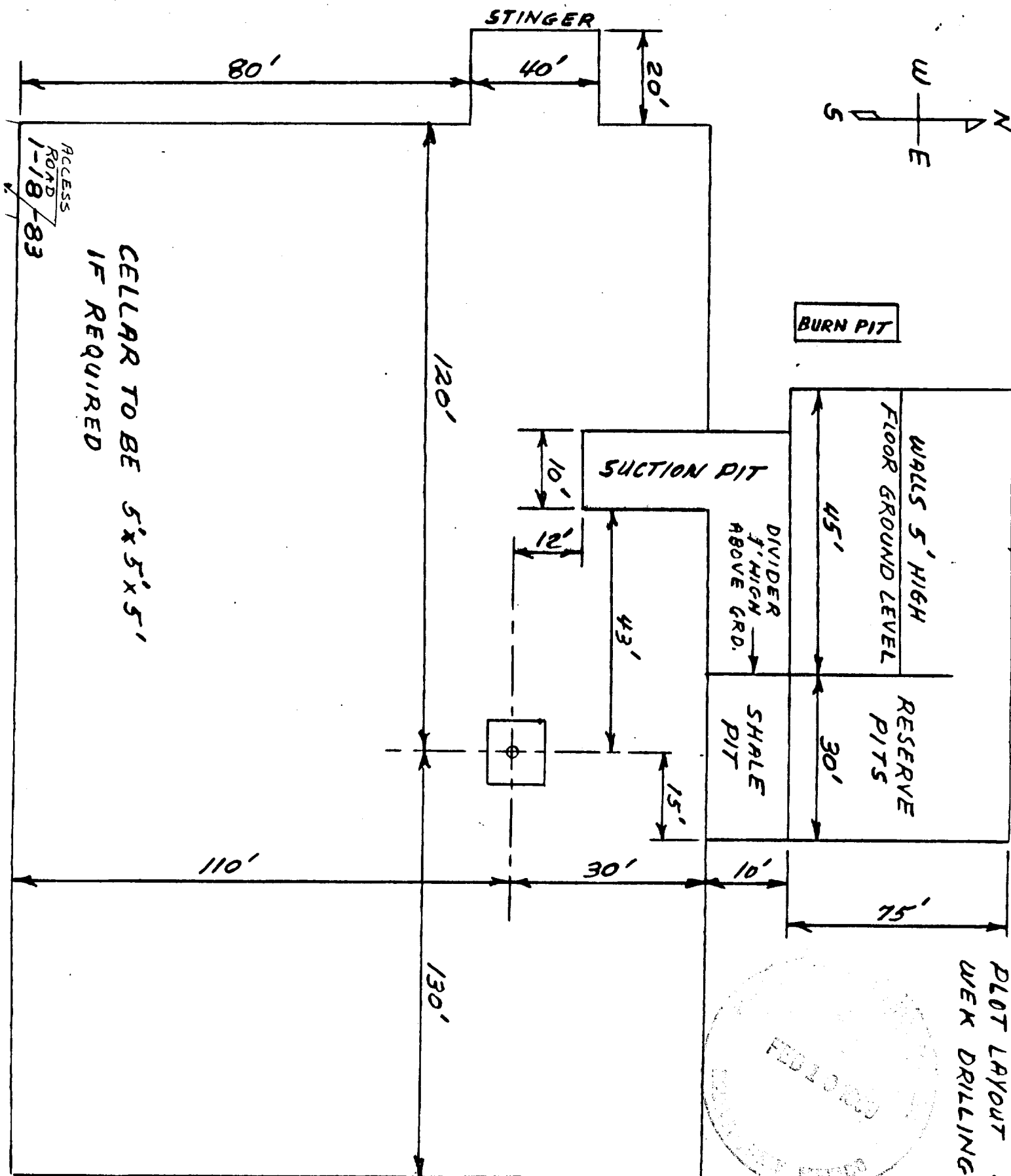
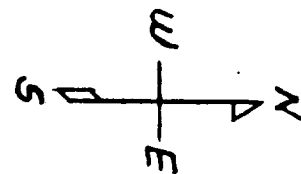
On Lease access road:

Off lease R/W:

State surface road:

Proposed Access Road:

On lease R/W:



PLOT LAYOUT RIG 3
WELL DRILLING

EXHIBIT "D"
McCLELLAN OIL CORPORATION
MM Federal, Well No. 10
Rig Layout