

UNITED STATES  
DEPARTMENT OF THE INTERIOR  
BUREAU OF LAND MANAGEMENT

APPLICATION FOR PERMIT TO DRILL, DEEPEN, OR PLUG BACK

1a. TYPE OF WORK  
DRILL ☒ DEEPEN ☐ PLUG BACK ☐  
b. TYPE OF WELL  
OIL WELL ☐ GAS WELL ☒ OTHER ☐ SINGLE ZONE ☒ MULTIPLE ZONE ☐  
2. NAME OF OPERATOR  
Bran Oil Corporation  
SEP -7 '89

3. ADDRESS OF OPERATOR  
P.O. Box 2328, Roswell, New Mexico 88202-6328  
4. LOCATION OF WELL (Report location clearly and in accordance with any State requirements)  
At surface  
1880' FSL & 1880' FWL, NE 1/4 SW 1/4, UNIT LETTER IC  
At proposed prod. zone

14. DISTANCE IN MILES AND DIRECTION FROM NEAREST TOWN OR POST OFFICE  
2 1/2 air miles Northeast of Roswell, New Mexico

15. DISTANCE FROM PROPOSED LOCATION TO NEAREST PROPERTY OR LEASE LINE, FT.  
(Also to nearest drlg. unit line, if any) 1880'  
18. DISTANCE FROM PROPOSED LOCATION TO NEAREST WELL, DRILLING, COMPLETED, OR APPLIED FOR, ON THIS LEASE, FT. 230'  
19. PROPOSED DEPTH 4,400' ±

21. ELEVATIONS (Show whether DF, RT, GR, etc.)  
3697' GL

23. PROPOSED CASING AND CEMENTING PROGRAM

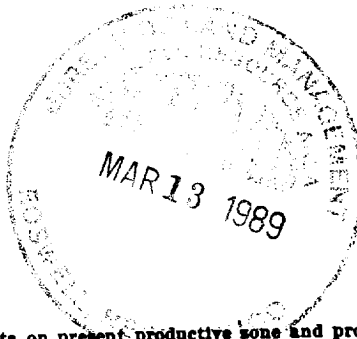
SIZE OF HOLE	SIZE OF CASING	WEIGHT PER FOOT	SETTING DEPTH	QUANTITY OF CEMENT
17 1/2"	13 3/8"	68.0#	85'	85 sx(Circulate)
12 1/4"	8 5/8"	24.0#	800'	250 sx(Circulate)
7 7/8"	4 1/2"	10.5#	T.D.	To isolate all oil, gas and water zones

Operator proposes to drill to the Abo formation to test for possible commercial production of gas.

Gas is not dedicated.

Attachments:

- A. Supplemental Drilling Data
- B. Surface Use Plan: Exhibits A-D
- C. B.O.P sketch



Post ID-1  
9-15-89  
New Loc + API

IN ABOVE SPACE DESCRIBE PROPOSED PROGRAM: If proposal is to deepen or plug back, give data on present productive zone and proposed new productive zone. If proposal is to drill or deepen directionally, give pertinent data on subsurface locations and measured and true vertical depths. Give blowout preventer program, if any.

24. SIGNED Henry W. Franklin TITLE Agent DATE March 13, 1989

(This space for Federal or State office use)

PERMIT NO. \_\_\_\_\_ APPROVAL DATE \_\_\_\_\_

APPROVED BY /s/ Phil Kirk TITLE Area Manager DATE Sept. 6, 1989

PLEASE BE ADVISED THAT THERE WILL BE NO EXCAVATION OF FEDERALLY OWNED MINERAL MATERIAL FOR CONSTRUCTION OF THE ACCESS ROAD OR PAD WITHOUT PAYMENT IN ADVANCE.

APPROVAL OF THIS APPLICATION DOES NOT WARRANT OR CERTIFY THAT THE APPLICANT HOLDS LEGAL OR EQUITABLE TITLE TO THOSE RIGHTS IN THE SUBJECT LEASE WHICH WOULD ENTITLE THE APPLICANT TO CONDUCT OPERATIONS THEREON.

File 18 U.S.C. Section 1001, makes it a crime for any person knowingly and willfully to make to any department or agency of the United States any false, fictitious or fraudulent statements or representations as to any matter within its jurisdiction.

Submit to Appropriate  
District Office  
State Lease - 4 copies  
Fee Lease - 3 copies

State of New Mexico  
Energy, Minerals and Natural Resources Department

OIL CONSERVATION DIVISION

P.O. Box 2088  
Santa Fe, New Mexico 87504-2088

Form C 102  
Revised 1-1-89

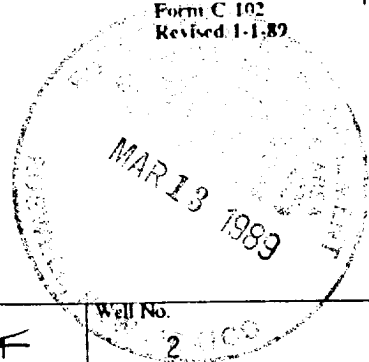
DISTRICT I  
P.O. Box 1980, Hobbs, NM 88240

DISTRICT II  
P.O. Drawer DD, Artesia, NM 88210

DISTRICT III  
1000 Rio Brazos Rd., Aztec, NM 87410

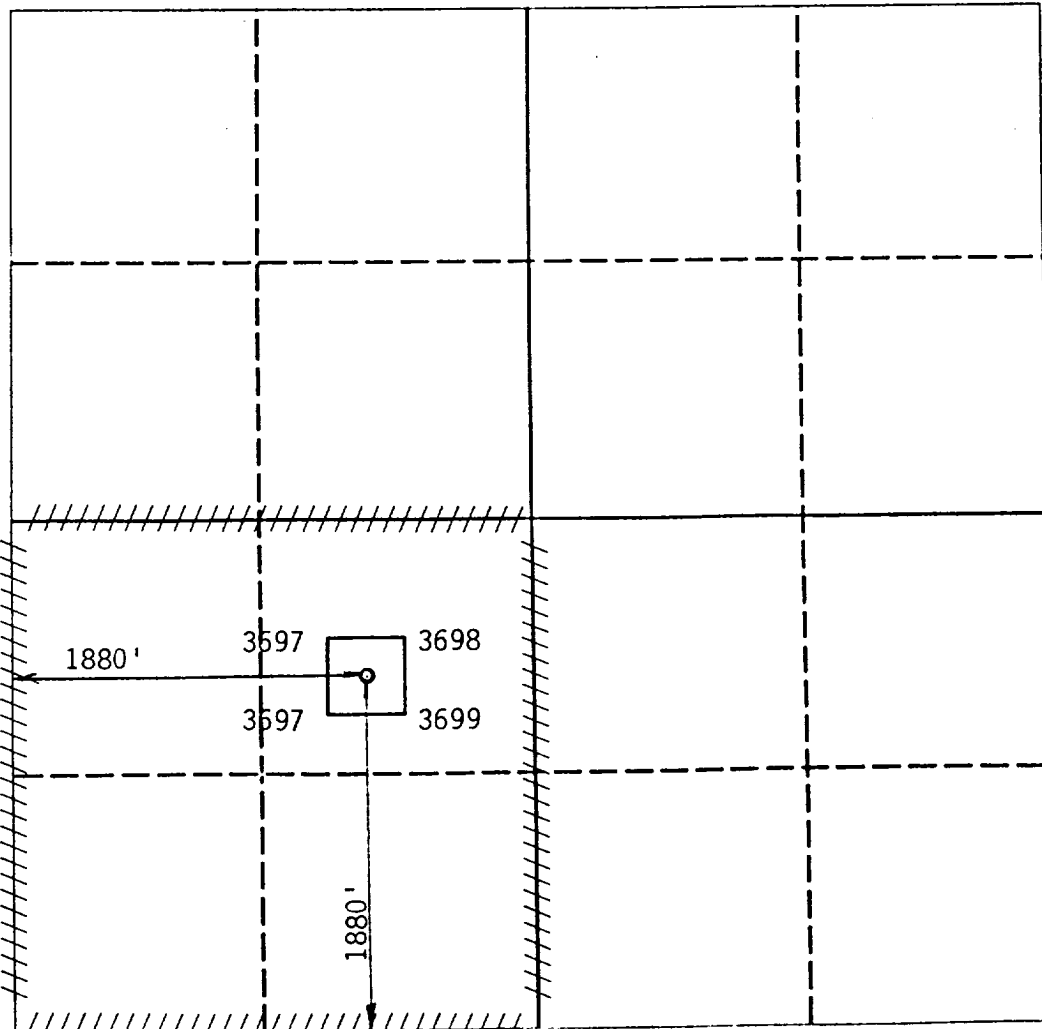
WELL LOCATION AND ACREAGE DEDICATION PLAT

All Distances must be from the outer boundaries of the section



Operator Bran Oil Corporation		Lease Union '33' Federal <del>COM</del>		Well No. 2
Unit Letter K	Section 33	Township 6 South	Range 26 East NMPM	County Chaves
Actual Footage Location of Well: 1880 feet from the South line and 1880 feet from the West line				
Ground level Elev. 3697	Producing Formation Abo	Pool Pecos Slope	Dedicated Acreage: 160 Acres	

- Outline the acreage dedicated to the subject well by colored pencil or hatchure marks on the plat below.
- If more than one lease is dedicated to the well, outline each and identify the ownership thereof (both as to working interest and royalty).
- If more than one lease of different ownership is dedicated to the well, have the interest of all owners been consolidated by communitization, unitization, force-pooling, etc.?  
☐ Yes ☐ No If answer is "yes" type of consolidation \_\_\_\_\_  
If answer is "no" list the owners and tract descriptions which have actually been consolidated. (Use reverse side of this form if necessary.)  
No allowable will be assigned to the well until all interests have been consolidated (by communitization, unitization, forced-pooling, or otherwise) or until a non-standard unit, eliminating such interest, has been approved by the Division.



OPERATOR CERTIFICATION

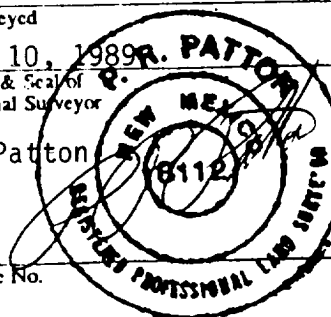
I hereby certify that the information contained herein is true and complete to the best of my knowledge and belief.

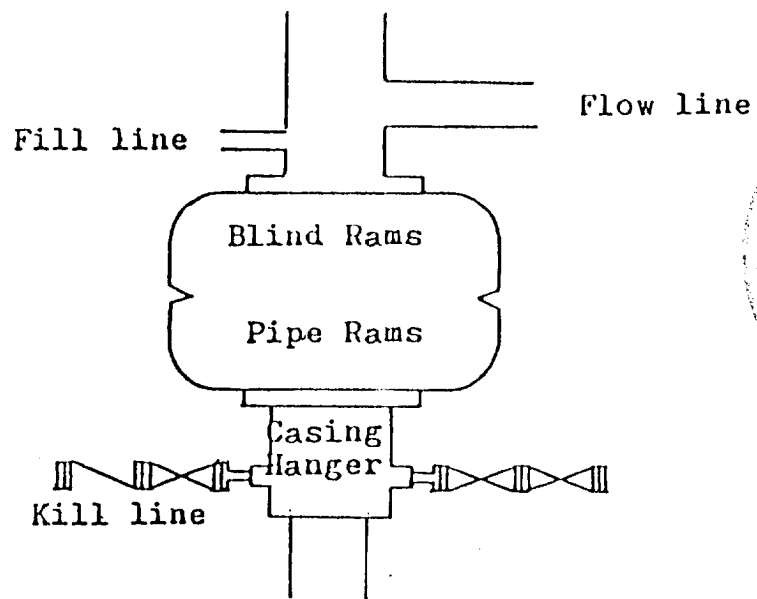
Signature  
*Terry W. Franklin*  
Printed Name  
Terry W. Franklin  
Position  
Agent  
Company  
Bran Oil Corporation  
Date  
March 13, 1989

SURVEYOR CERTIFICATION

I hereby certify that the well location shown on this plat was plotted from field notes of actual surveys made by me or under my supervision, and that the same is true and correct to the best of my knowledge and belief.

Date Surveyed  
March 10, 1989  
Signature & Seal of Professional Surveyor  
P.R. Patton  
8112  
Certificate No.





Blowout Preventer  
3000 psi working pressure

Pertinent Lease Data

BRAN OIL CORPORATION  
Union '33' Federal No. 2  
1880' FSL & 1880' FWL  
Sec. 33, T6S, R26E  
Chaves County, N.M.



Located: 24 1/2 air miles NE of Roswell, N.M.

Lease Number: LC-068127

Lease Issued: April 1, 1951

Record Lessee: Frank O. Elliott Living Trust  
Edna Ione Hall Living Trust

Operator's Authority: Designation of Operator  
Union Oil Company of California-100%  
Operating Rights Owner-D.O. dated 9/2/87

Bond Coverage: \$150,000.00 Nationwide Bond of 100% Operating  
Rights Owner(Union Oil Company of California)

Acres in Lease: 920 acres

Surface Ownership: Federal

Grazing Permittee: Mark S. Cooper

Pool Rules: General Statewide Rules

Exhibits:

- A. Directional highway map
- B. Land plat
- C. Topographic map displaying access roads
- D. Wellsite plat
- E. B.O.P. diagram

SUPPLEMENTAL DRILLING DATA

BRAN OIL CORPORATION  
Union '33' Federal No. 2  
1880' FSL & 1880' FWL  
Sec. 33, T6S, R26E  
Chaves County, N.M.

LC-068127



The following information is filed in accordance with 'Onshore Oil and Gas Order' No. 1:

1. Geologic Name of Surface Formation: Alluvium

2. Estimated Geological Marker Tops:

San Andres	600'
Glorietta	1608'
Tubb	3060'
Abo	3760'

3. Estimated Depths to Oil, Gas and Water:

Water	Above 600'
Gas	Below 3800'

4. Proposed Casing and Cement Program:

Surface Casing - Set approximately 800', 8 5/8", 24.0#, J-55 ST&C casing. Cement to surface with 250 sx Class 'C' cement.

Production Casing - Set to total depth, 4 1/2", 10.5#, K-55, ST&C casing. Cement to isolate all oil, gas and water zones, or T.O.C to 600' above top of pay.

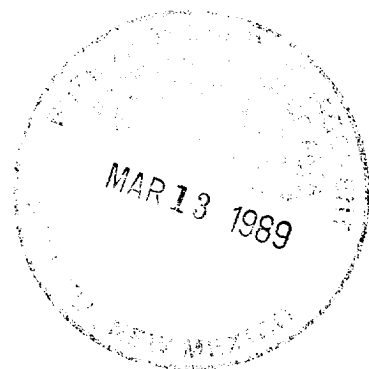
5. Proposed Mud Program:

0 - 800'	Lime and gel, spud mud, viscosity 32-34
800 - 3660'	Fresh water
3660 - T.D.	Mud up at 3660' with salt base mud; viscosity 36-38; water loss 10-15 cc

6. Pressure Control Equipment: A 3000 psi working pressure B.O.P. will be installed after the 8 5/8" casing is set and cemented.
7. Proposed Testing, Logging and Coring Programs:  
Testing: None  
Logging: CNL-FDC; DLL-MSFL  
Coring : None
8. Auxiliary Equipment: A kelly cock will be installed on the rig floor while drilling operations are in progress.
9. Abnormal Pressures or Temperature Zones: No abnormal pressures or temperature zones are anticipated.
10. Anticipated Starting Date: Commence drilling operations upon approval of the Permit to Drill.

SURFACE USE AND OPERATION PLAN

BRAN OIL CORPORATION  
Union '33' Federal No. 2  
1880' FSL & 1880' FWL  
Sec. 33, T6S, R26E  
Chaves County, N.M.



1. Location of Proposed Well:
  - A. Exhibit 'A' is a portion of a highway map displaying the location as staked. Proposed location is situated approximately 24 1/2 air miles Northeast of Roswell, N.M.
2. Access Roads to be Constructed and Reconstructed:
  - A. Exhibit 'B' displays the existing roads and also the planned access roads.
  - B. Proposed new access road will be 14' wide by approximately 550' in length. The new access road will enter the Southeast corner of the location as displayed on Exhibit 'B'.
  - C. Existing access roads to the proposed wellsite will be used in their present state. No 'off lease' access road will be necessary. 'Off lease' access road authority filed under Bran Oil Corporation's Osage '33' Com. No. 1 well located 990' FNL & 1980' FEL, Sec. 33, T6S, R26E.
3. Location of Existing Wells:
  - A. Exhibit 'C' displays the existing wells in the immediate area.
4. Location of Existing and/or Proposed Production Facilities:
  - A. Necessary production equipment will be constructed on well pad.
5. Location and Type of Water Supply:
  - A. The Pecos River is located approximately 350' west of location.
  - B. Water necessary for drilling operations will be purchased from a nearby commercial source and trucked to the drillsite.
6. Construction Materials:
  - A. Surfacing materials will be purchased from a private pit located in the NE/4 SW/4, Sec. 10, T7S, R26E.(Wagner Ranch) Exhibit 'B' displays the pit.

7. Methods for Handling Waste Disposal:

- A. Drill cuttings will be disposed in the reserve pits.
- B. Drilling fluids will evaporate in the reserve pits until dry.
- C. Water produced during tests will be disposed in the reserve pits.
- D. All trash will be buried in a separate pit and covered with a minimum of 24 inches of dirt.
- E. The location will be cleaned of all debris as soon as drilling operations are completed.

8. Ancillary Facilities:

- A. 5" of topsoil will be stockpiled due west of the reserve pit area for reclamation purposes.

9. Well Site Layout:

- A. Exhibit 'D' displays the well site and rig layout.

10. Plans for Reclamation of the Surface:

- A. After completion of operations, all materials not needed for producing the well will be removed. Pits will be filled and the location cleaned of all trash and junk to leave the well site in good condition.
- B. Any unguarded pits containing fluids will be fenced until dry.
- C. If the test well results in a non-commercial test, the well pad and new access road will be rehabilitated to BLM requirements.

11. Surface Ownership: The surface is federal. Grazing allottee:

Mark S. Cooper  
Clovis Star Route  
Roswell, N.M. 88201

12. Other Information:

- A. Topography: Older terrace deposit of the Pecos River. Landform is relatively flat in the access road and well pad area.
- B. Soil: Silt loam , hummock, sandy loam.
- C. Vegetation: Grassland Formation, Desert Grassland or Scrub-grass scrub disclimax community.
- D. An archaeological survey on well pad and access road conducted by Archaeological Survey Consultants, March 10, 1989.



13. Operator's Representative and Certification:

F. Andrew Grooms  
P.O. Box 2328  
Roswell, New Mexico 88202-2328  
Telephone: 623-2840

I hereby certify that I, or persons under my direct supervision, have inspected the proposed drillsite and access route; that I am familiar with the conditions which currently exist; that the statements made in this plan are, to the best of my knowledge, true and correct; and the work associated with operations proposed herein will be performed by BRAN OIL CORPORATION and its contractors and subcontractors in conformity with this plan and the terms and conditions under which it is approved. This statement is subject to provisions of 18 USC 1001 for the filing of a false statement.

March 13, 1989  
Date

Terry W. Franklin  
Terry W. Franklin-Agent  
Bran Oil Corporation

# DIRECTIONS TO LOCATION

BRAN OIL CORPORATION  
Union '33' Federal No. 2  
1880' FSL & 1880' FWL  
Sec. 32 T6S, R26E  
Chaves County, N.M.

Starting point being at intersection highway 285(Vaughn) & highway 70 (Portales):

- 00.00 Proceed northeast on highway 70 towards Portales, New Mexico for approximately 11 miles(5/10 mile past MM 352);
- 11.00 Turn north on county road(Rock School House), and proceed north for 10 miles;
- 21.00 Turn west(Cliff Road) and proceed 9/10 mile to ranch house;
- 21.90 Turn north through ranch house and proceed north for 4/10 mile;
- 22.30 Turn northeast and proceed .95 miles(travel past H.E. Prince Tank Battery on west side of road)
- 23.25 Turn west and proceed .1 miles
- 23.35 Location

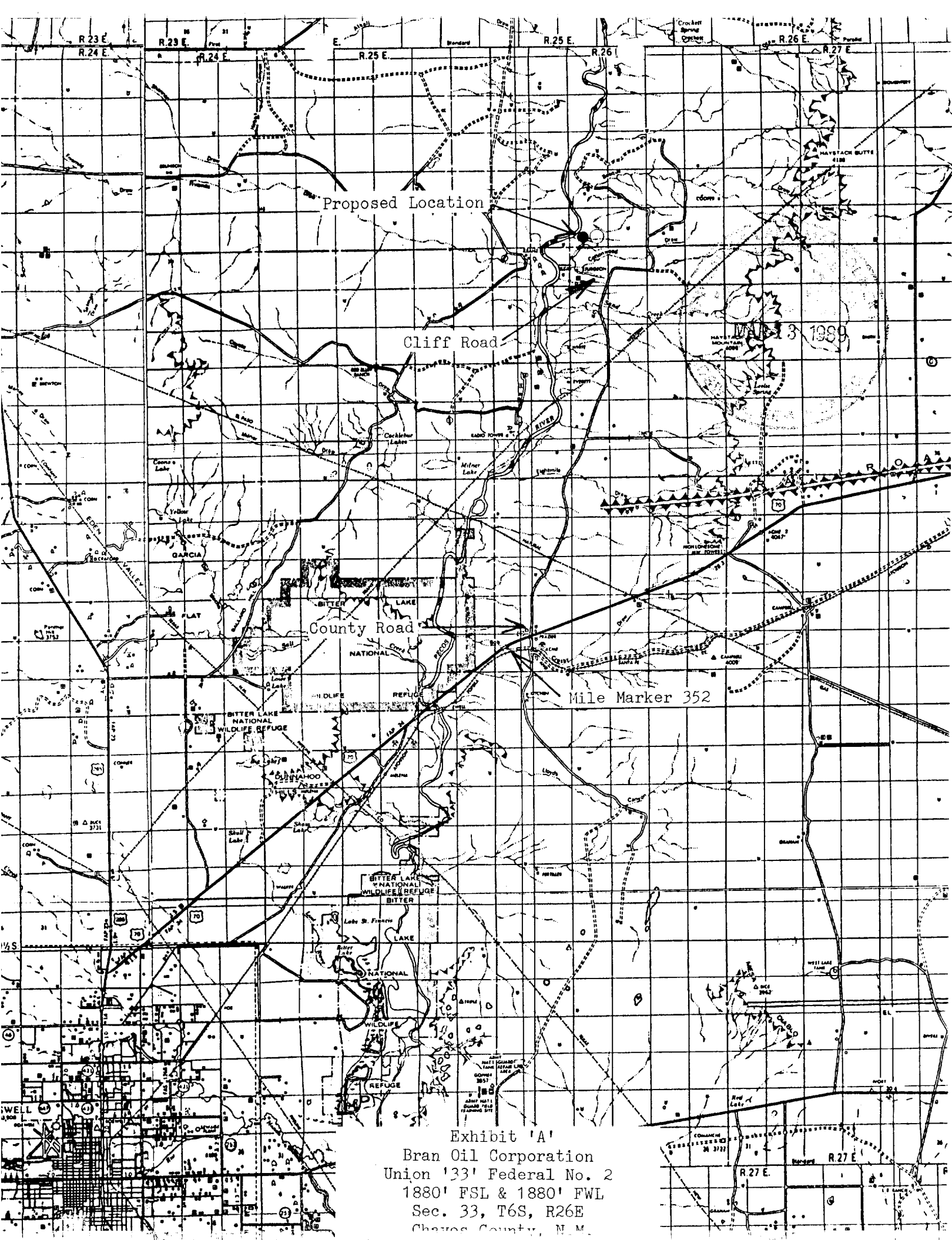
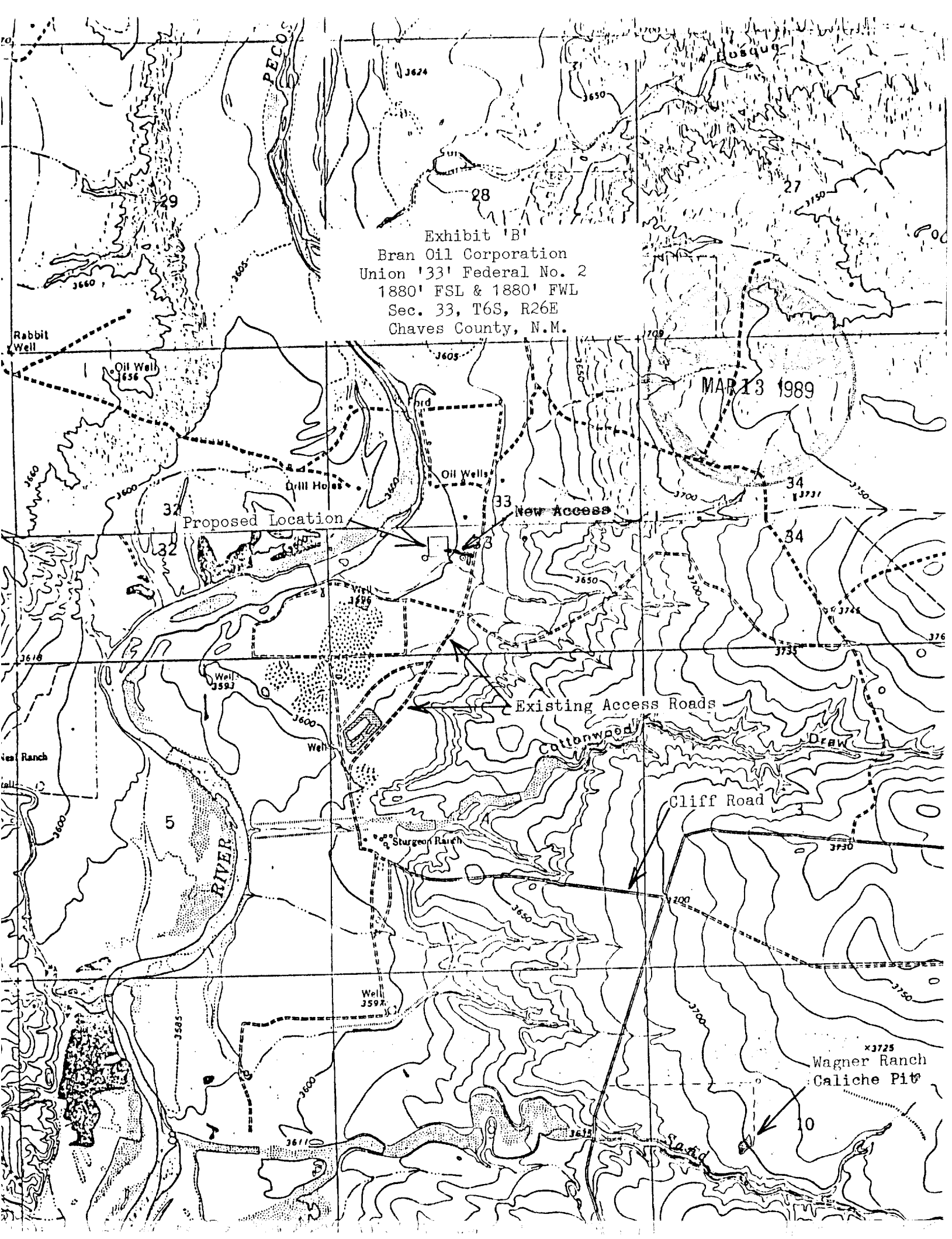
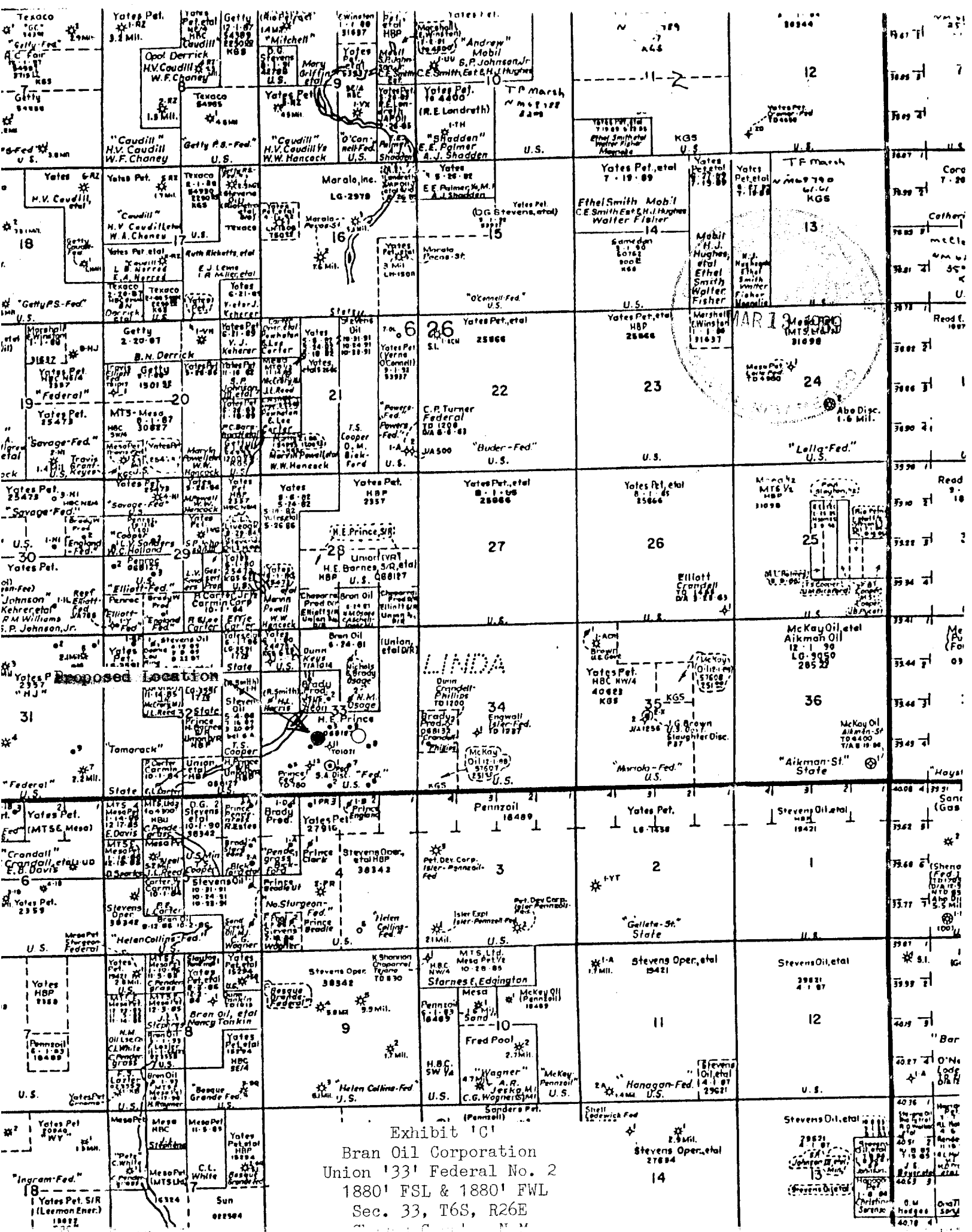


Exhibit 'A'  
Bran Oil Corporation  
Union '33' Federal No. 2  
1880' FSL & 1880' FWL  
Sec. 33, T6S, R26E  
Chaves County, N.M.

Exhibit 'B'  
Bran Oil Corporation  
Union '33' Federal No. 2  
1880' FSL & 1880' FWL  
Sec. 33, T6S, R26E  
Chaves County, N.M.

MAR 13 1989





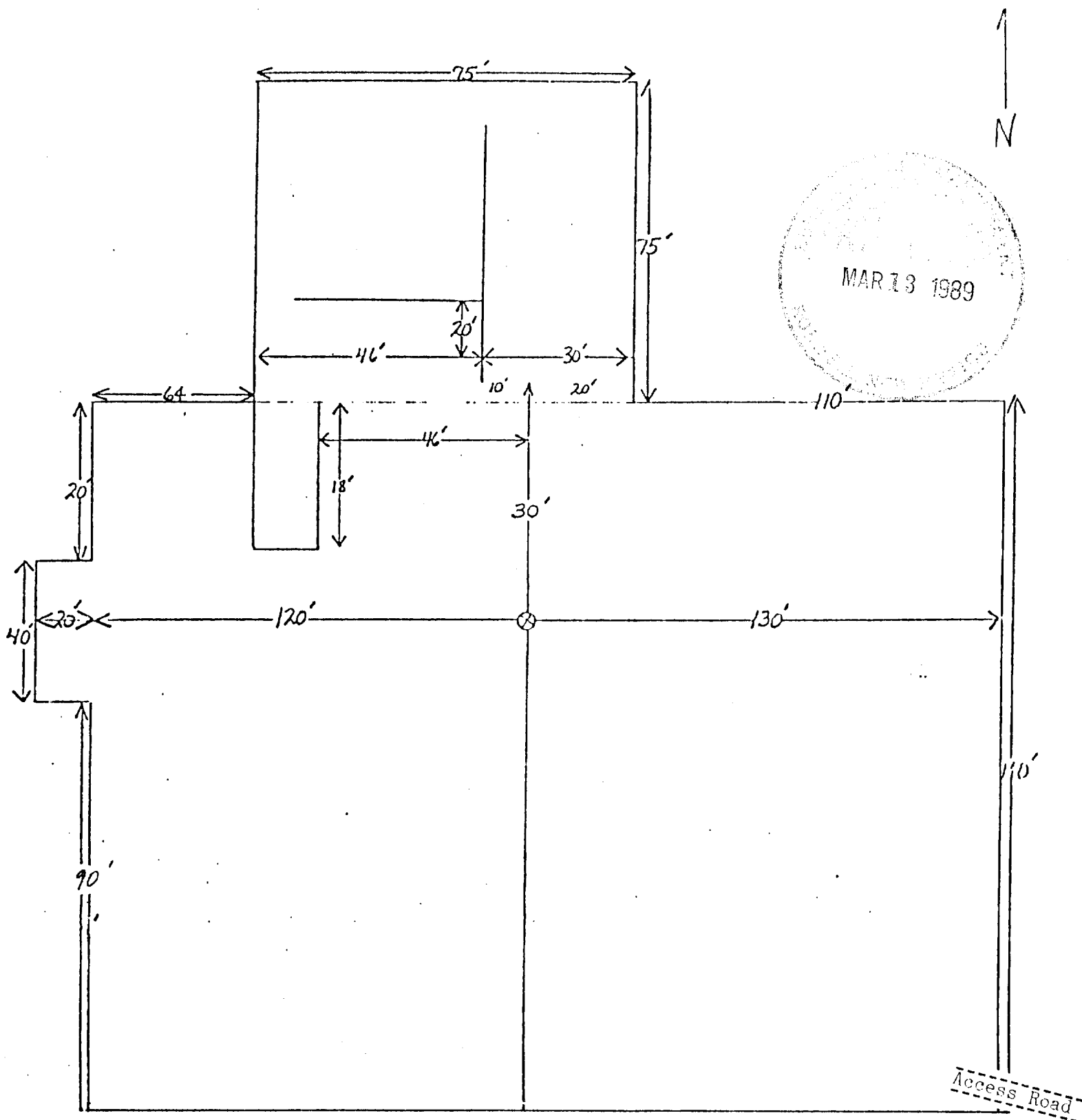


Exhibit 'D'  
 Bran Oil Corporation  
 Union '33' Federal No. 2  
 1880' FSL & 1880' FWL  
 Sec. 33, T6S, R26E  
 Chaves County, N.M.