

UNITED STATES  
DEPARTMENT OF THE INTERIOR  
BUREAU OF LAND MANAGEMENT

SUBMIT IN \_\_\_\_\_ LIGATE\*  
(Other instr. ons on  
reverse side)

30-005-62726  
Form approved.  
Budget Bureau No. 1004-0136  
Expires August 31, 1985

APPLICATION FOR PERMIT TO DRILL, DEEPEN, OR PLUG BACK

1a. TYPE OF WORK

DRILL ☒

DEEPEN ☐

PLUG BACK ☐

b. TYPE OF WELL

OIL  
WELL ☐

GAS  
WELL ☒

OTHER

Amend Original

APD

SINGLE  
ZONE ☐

MULTIPLE  
ZONE ☐

2. NAME OF OPERATOR

Yates Petroleum Corporation

3. ADDRESS OF OPERATOR

105 South Fourth Street, Artesia, NM 88210

4. LOCATION OF WELL (Report location clearly and in accordance with any State requirements.)

At surface Change from:

1650' FSL & 1650' FWL to 1950' FSL & 1650' FWL  
At proposed prod. zone

14. DISTANCE IN MILES AND DIRECTION FROM NEAREST TOWN OR POST OFFICE\*

Approximately 24 miles N NW of Roswell

15. DISTANCE FROM PROPOSED\*

LOCATION TO NEAREST  
PROPERTY OR LEASE LINE, FT.  
(Also to nearest drlg. unit line, if any) 1650'

16. NO. OF ACRES IN LEASE

17. NO. OF ACRES ASSIGNED  
TO THIS WELL

18. DISTANCE FROM PROPOSED LOCATION\*  
TO NEAREST WELL, DRILLING, COMPLETED,  
OR APPLIED FOR, ON THIS LEASE, FT.

19. PROPOSED DEPTH

3250'

20. ROTARY OR CABLE TOOLS

Rotary

21. ELEVATIONS (Show whether DF, RT, GR, etc.)

4063.2' GR

22. APPROX. DATE WORK WILL START\*

ASAP

23.

PROPOSED CASING AND CEMENTING PROGRAM

SIZE OF HOLE	SIZE OF CASING	WEIGHT PER FOOT	SETTING DEPTH	QUANTITY OF CEMENT
12 1/2"	8 5/8"	24.0# J-55	1200'	1200 sacks circulated
7 7/8"	4 1/2"	9.5# J-55	TD	350 sacks

Yates proposes to drill and test the Abo and intermediate formations. Approximately 1200' of surfacing casing will be set and cement circulated. If commercial, production casing will be run and cemented with adequate cover, perforated and stimulated as needed for production.

MUD PROGRAM: FW/GEL/LCM to 1200', Cut Brine to 2700', Starch/Drlspak to TD.

BOP PROGRAM: BOP will be installed at the offset and tested daily for operational.

GAS NOT DEDICATED:

IN ABOVE SPACE DESCRIBE PROPOSED PROGRAM: If proposal is to deepen or plug back, give data on present productive zone and proposed new productive zone. If proposal is to drill or deepen directionally, give pertinent data on subsurface locations and measured and true vertical depths. Give blowout preventer program, if any.

24.

SIGNED

Clifton R. May

TITLE Permit Agent

(This space for Federal or State office use)

PERMIT NO.

APPROVAL DATE

S/Phil Kirk

Area Manager

SEP 11 1989

APPROVED BY

TITLE

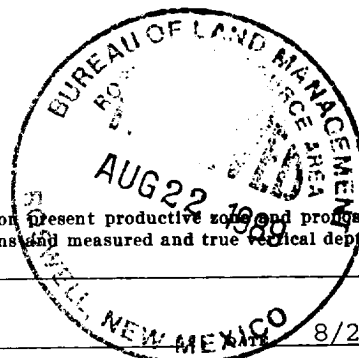
DATE

CONDITIONS OF APPROVAL, IF ANY:

APPROVAL OF THIS APPLICATION DOES NOT WARRANT OR  
CERTIFY THAT THE APPLICANT HOLDS LEGAL OR EQUITABLE  
TITLE TO THOSE RIGHTS IN THE SUBJECT LEASE WHICH  
ENTITLES THE APPLICANT TO CONDUCT OPERATIONS THEREON.

PLEASE BE ADVISED THAT THERE WILL BE NO EXCAVATION  
OF FEDERALLY OWNED MINERAL MATERIAL FOR CONSTRUCTION  
OF THE ACCESS ROAD OR PAD WITHOUT PAYMENT  
IN ADVANCE.

Title 18 U.S.C. Section 1001, makes it a crime knowingly and willfully to make to any department or agency of the  
ENTITLED THE APPLICANT TO CONDUCT OPERATIONS THEREON.



Submit to Appropriate  
District Office  
State Lease - 4 copies  
Fee Lease - 3 copies

State of New Mexico  
Energy, Minerals and Natural Resources Department

Form C-102  
Revised 1-1-89

OIL CONSERVATION DIVISION

P.O. Box 2088  
Santa Fe, New Mexico 87504-2088

DISTRICT I  
P.O. Box 1980, Hobbs, NM 88240

DISTRICT II  
P.O. Drawer DD, Artesia, NM 88210

DISTRICT III  
1000 Rio Brazos Rd., Aztec, NM 87410

WELL LOCATION AND ACREAGE DEDICATION PLAT

All Distances must be from the outer boundaries of the section

Operator YATES PETROLEUM CORPORATION			Lease VENTURE "YV" FEDERAL		Well No. 1
Unit Letter K	Section 11	Township 8 South	Range 22 East	County NMPM Chaves	
Actual Footage Location of Well: 1650 feet from the West line and 1950 feet from the South line					
Ground level Elev. 4063.2		Producing Formation Albo		Pool WILDCAT	Dedicated Acreage: 16.0 Acres

1. Outline the acreage dedicated to the subject well by colored pencil or hatchure marks on the plat below.

2. If more than one lease is dedicated to the well, outline each and identify the ownership thereof (both as to working interest and royalty).

3. If more than one lease of different ownership is dedicated to the well, have the interest of all owners been consolidated by communitization, unitization, force-pooling, etc.?

☐ Yes ☐ No If answer is "yes" type of consolidation

If answer is "no" list the owners and tract descriptions which have actually been consolidated. (Use reverse side of this form if necessary).

No allowable will be assigned to the well until all interests have been consolidated (by communitization, unitization, forced-pooling or otherwise) or until a non-standard unit, eliminating such interest, has been approved by the Division.

OPERATOR CERTIFICATION

I hereby certify that the information contained herein is true and correct to the best of my knowledge and belief.

Signature  
Clifton R. May

Printed Name  
CLIFTON R. MAY

Position  
PERMIT AGENT

Company  
YATES PETROLEUM CORPORATION

Date  
8-21-89

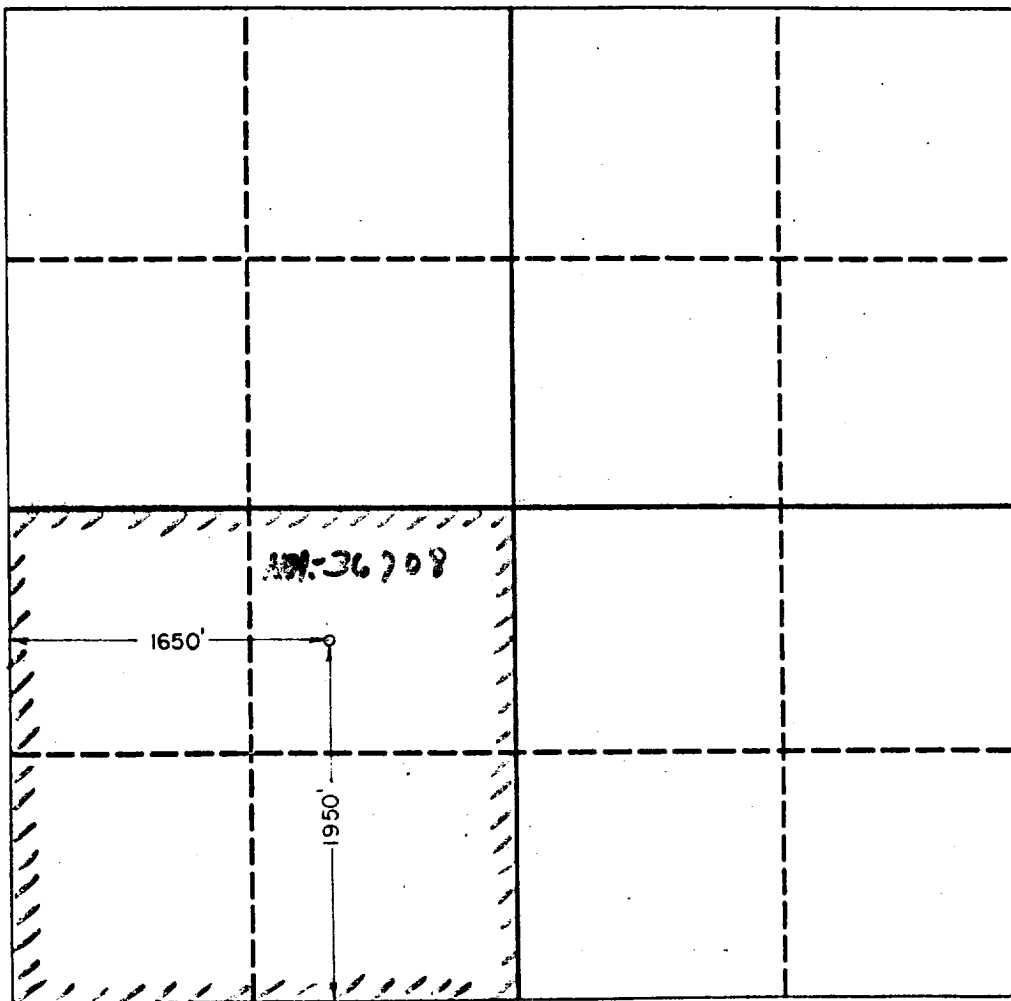
SURVEYOR CERTIFICATION

I hereby certify that the well location shown on this plat was plotted from field notes of actual surveys made by me or under my supervision, and that the same is true and correct to the best of my knowledge and belief.

Date Surveyed  
8/18/89

Signature & Seal of  
Professional Surveyor

HERSCHEL L. JONES  
3840  
LAND SURVEYOR



0 330 660 990 1320 1650 1980 2310 2640 2000 1500 1000 500 0

YATES PETROLEUM CORPORATION  
Venture "YV" Federal #1  
1950' FSL & 1650' FWL  
Section 11-T8S-R22E  
Chaves County, New Mexico

In conjunction with Form 3160-3, Amendment to Application for Permit to Drill subject well, Yates Petroleum Corporation submits the following changes to the ten items of pertinent information in accordance with USGS requirements.

1. Same
2. The estimated tops of geologic markers are as follows:

Glorieta	589'
Fullerton	1950'
Abo	2665'
TD	3250'.
3. The estimated depths at which anticipated water, oil or gas formations are expected to be encountered:

Water: Approximately 250' - 350'  
Oil or Gas: - Abo 2665'
4. Same
5. Same
6. Same
7. Same
8. Same
9. Same
10. Same



MULTI-POINT SURFACE USE AND OPERATIONS PLAN  
Yates Petroleum Corporation  
Venture "YV" Federal #1  
1950' FSL & 1650' FWL  
Section 11, T8S-R22E  
Chaves County, New Mexico

Changes to this plan are submitted with Form 3160-3, Amended Application for Permit to Drill, covering the above described well.

1. Same
2. PLANNED ACCESS ROAD
  - A. The proposed access road will be approximately 2.1 of a mile in length from point of origin southwest edge of the drilling pad as shown in Exhibit A.
  - B. The two track road will be upgraded for approximately the first 2 miles. New construction will start here and go north approximately 275' and then east approximately 225' to the southwest corner of the pad.
  - C. The surface will not be caliched. Only necessary upgrading will be done to allow access to the well as allowed on a wildcat road.
3. Same
4. Same
5. Same
6. Same
7. Same
8. Same
9. WELLSITE LAYOUT:
  - A. Same - see new Exhibit C<sub>1</sub>, C<sub>2</sub>, C<sub>3</sub>
  - B. Same
  - C. Same
10. Same
11. Same
12. Same
13. Same

Venture "YV" Federal #1

Page 2

14. CERTIFICATION:

I hereby certify that I, or persons under my direct supervision, have inspected the proposed drillsite and access route, that I am familiar with the conditions which presently exist; that the statements made in this plan are to the best of my knowledge, true and correct; and, that the work associated with the operations proposed herein will be performed by Yates Petroleum Corporation and its contractors and subcontractors in conformity with this plan and the terms and conditions under which it is approved. This statement is subject to the provisions of 18 U.S.C. 1001 for the filing of a false statement.

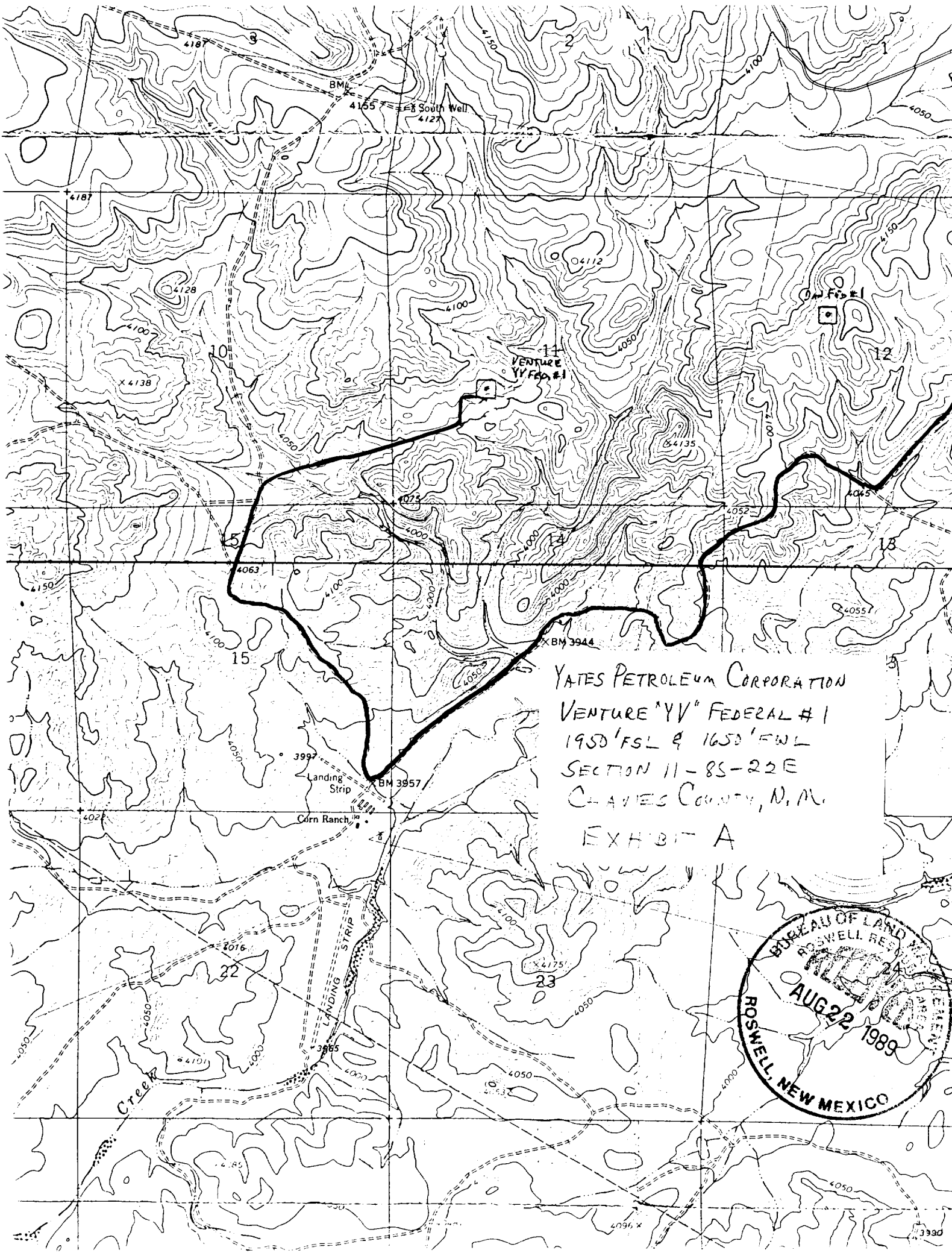
8-21-89

Date

Clifton R. May

Clifton R. May  
Permit Agent

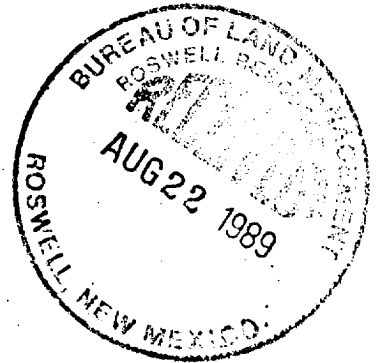
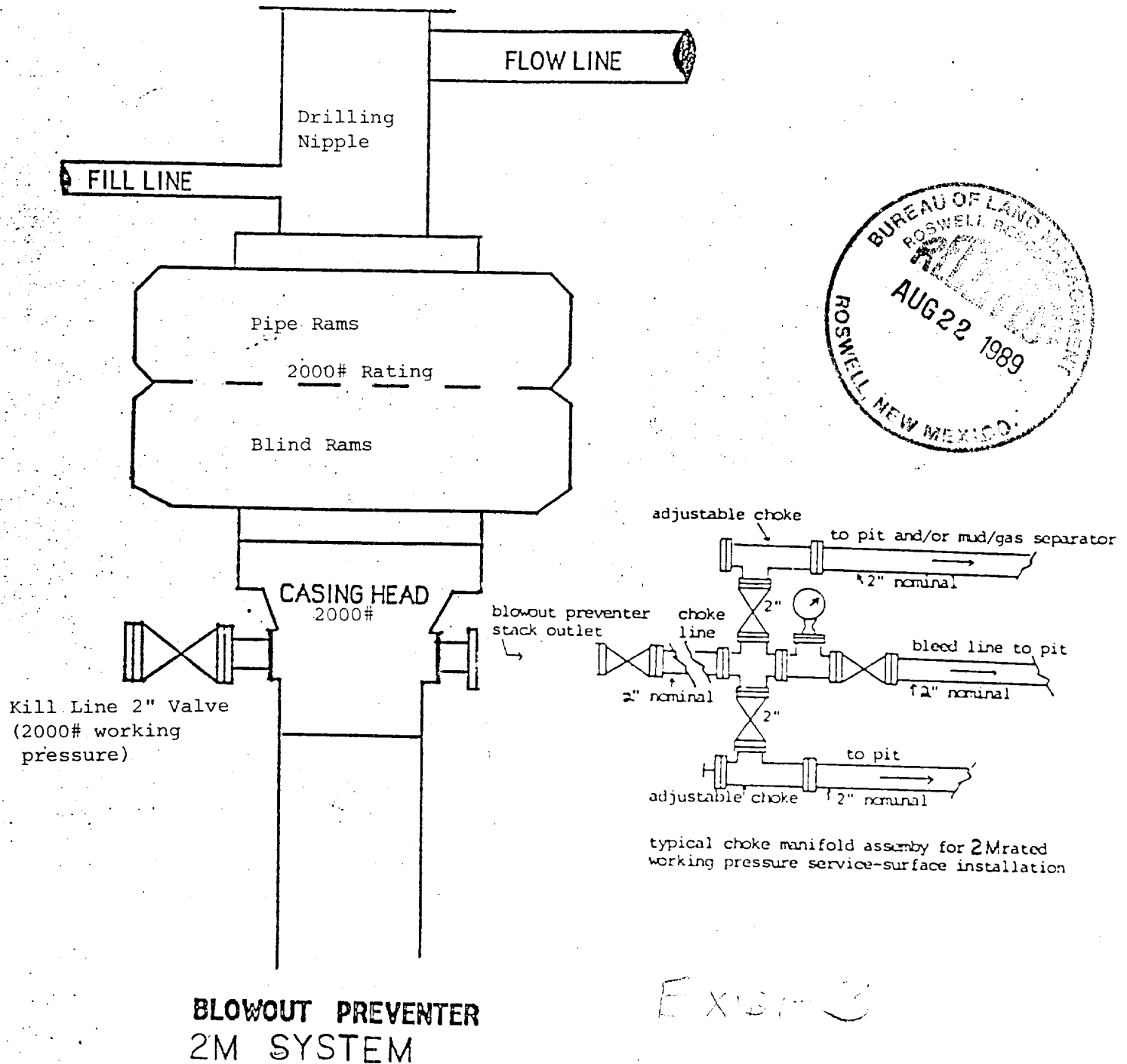




YATES PETROLEUM CORPORATION  
VENTURE "YV" FEDERAL # 1  
1950' FSL & 1650' FNL  
SECTION 11-8S-22E  
CHAVES COUNTY, N.M.  
EXHIBIT A



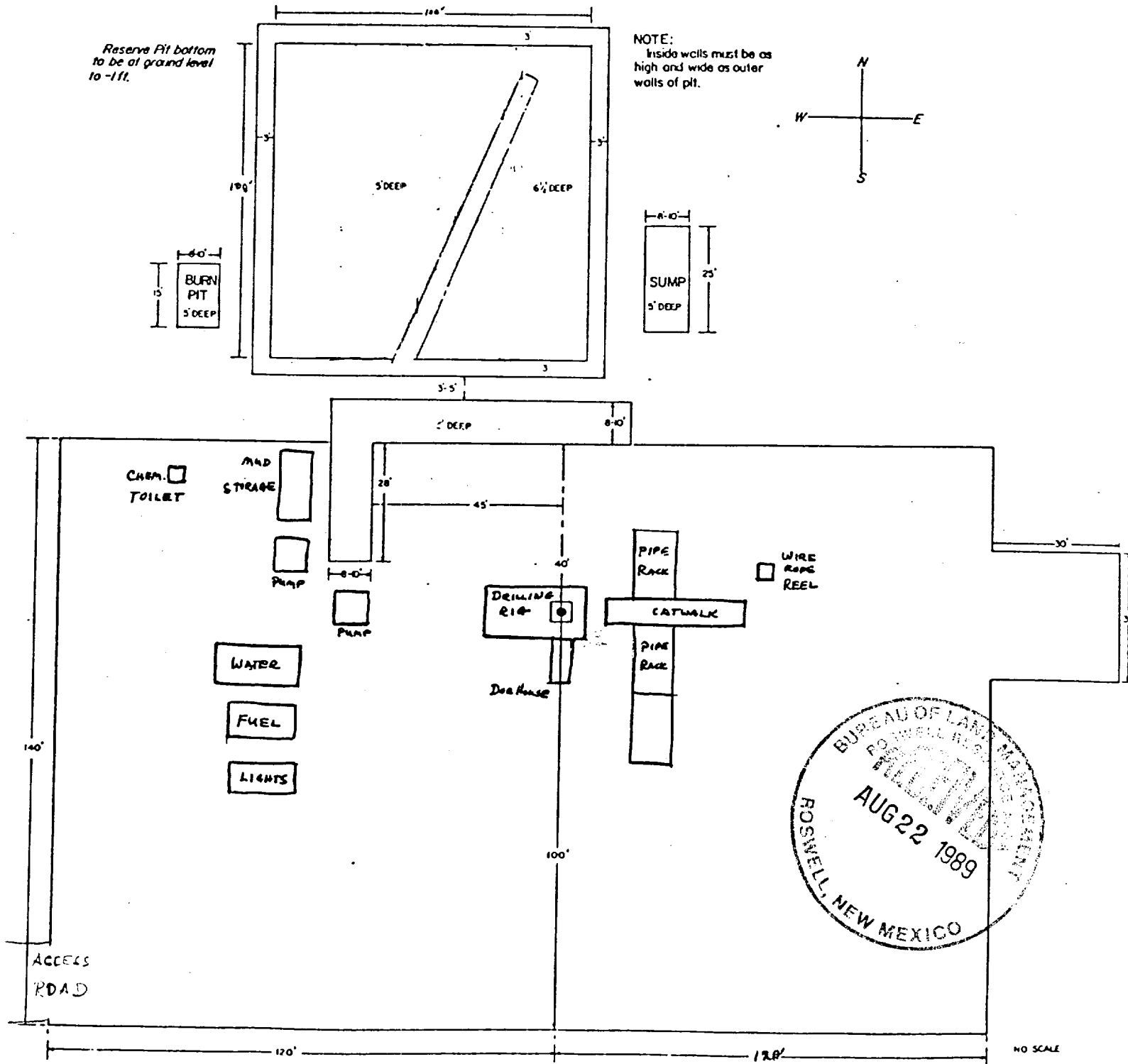
# YATES PETROLEUM CORPORATION



EXIST-3

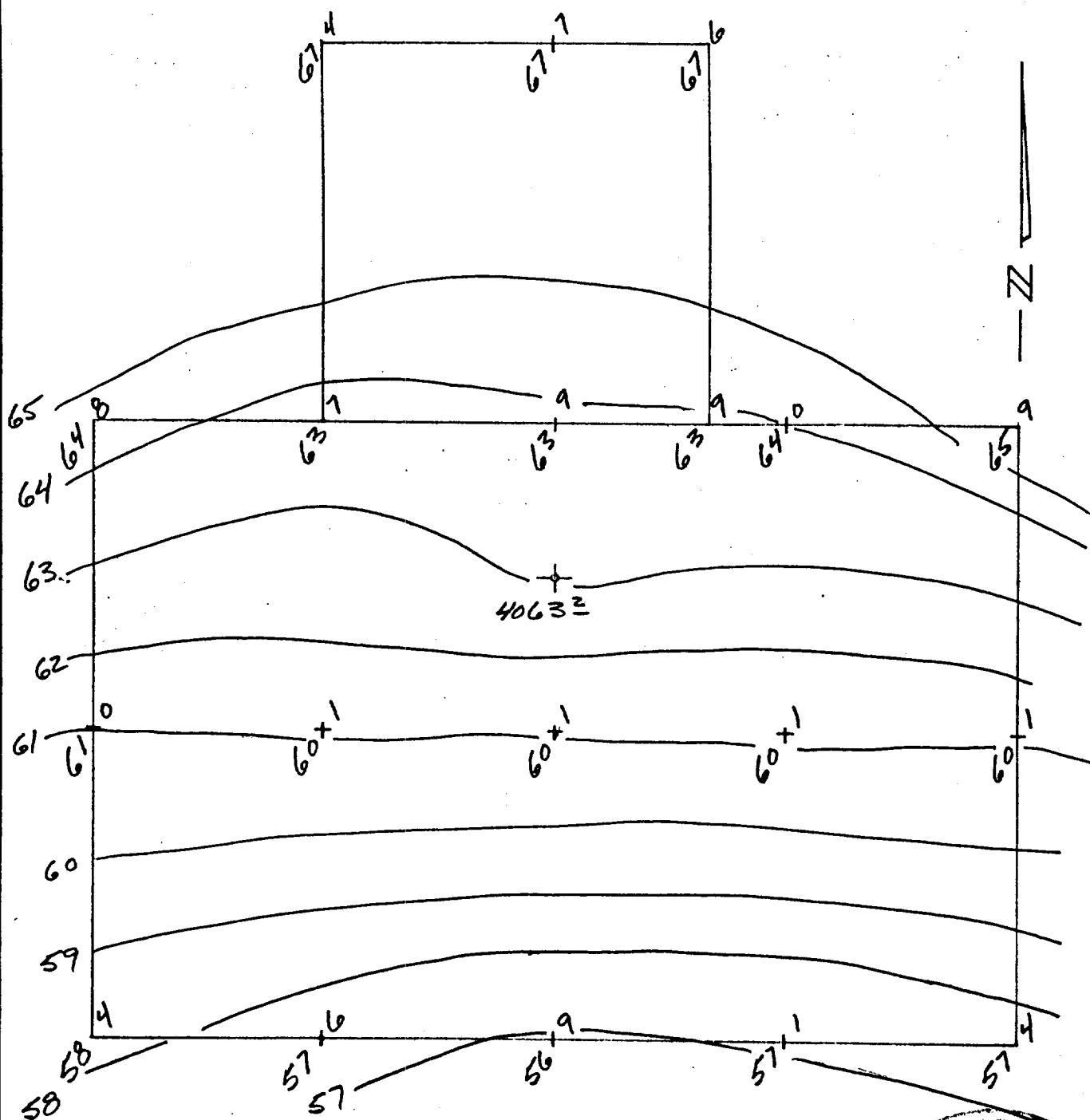
# YATES PETROLEUM CORPORATION

## EXHIBIT C





JOB No.

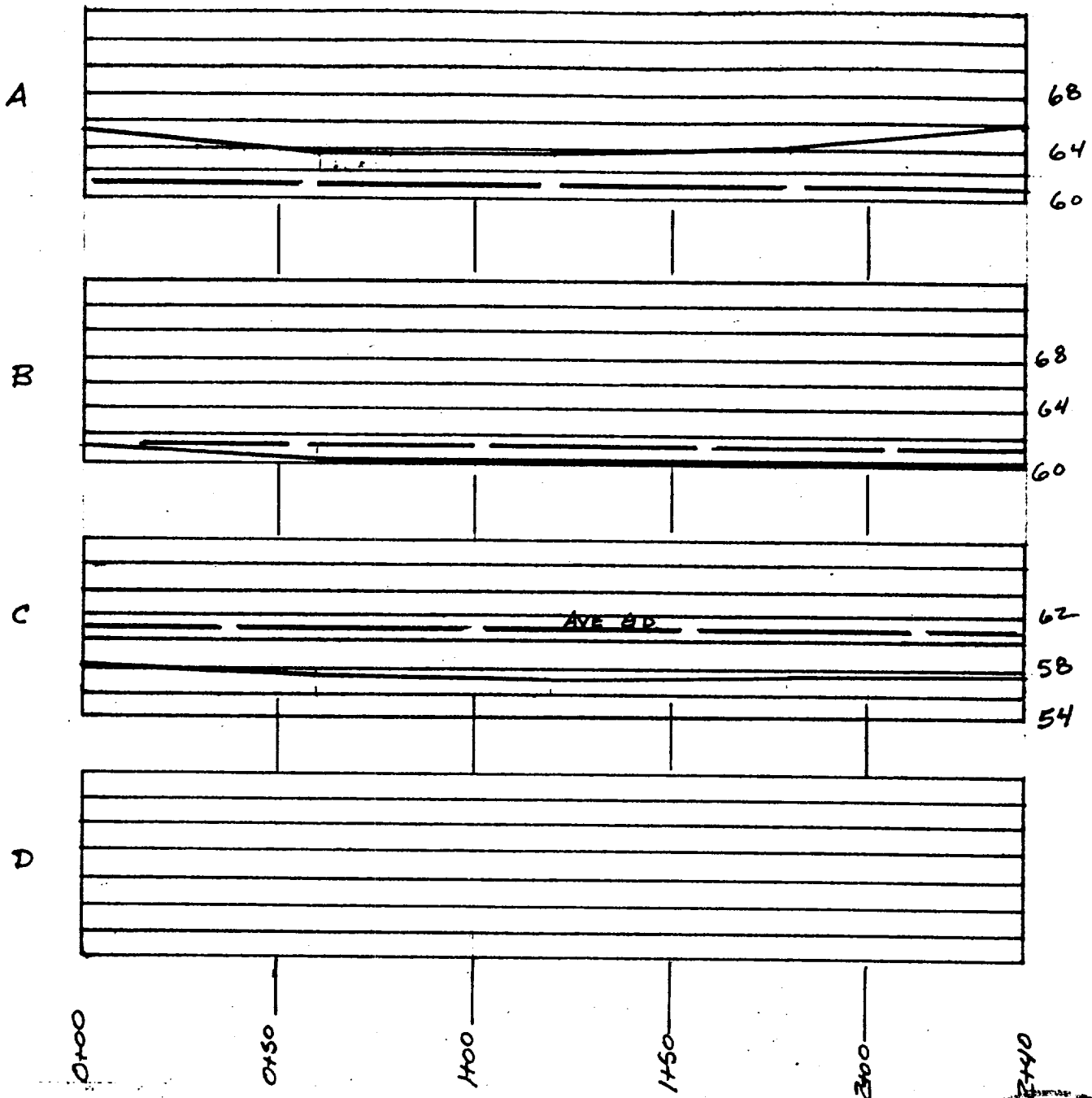


AVE. GD. 4061.1

EXIT C<sub>2</sub>

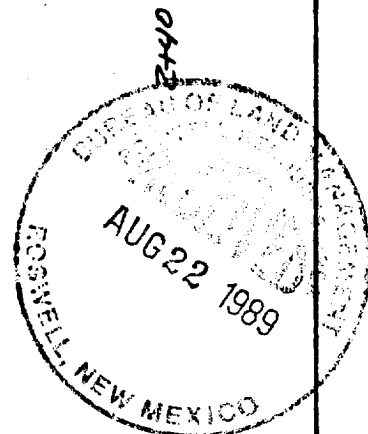


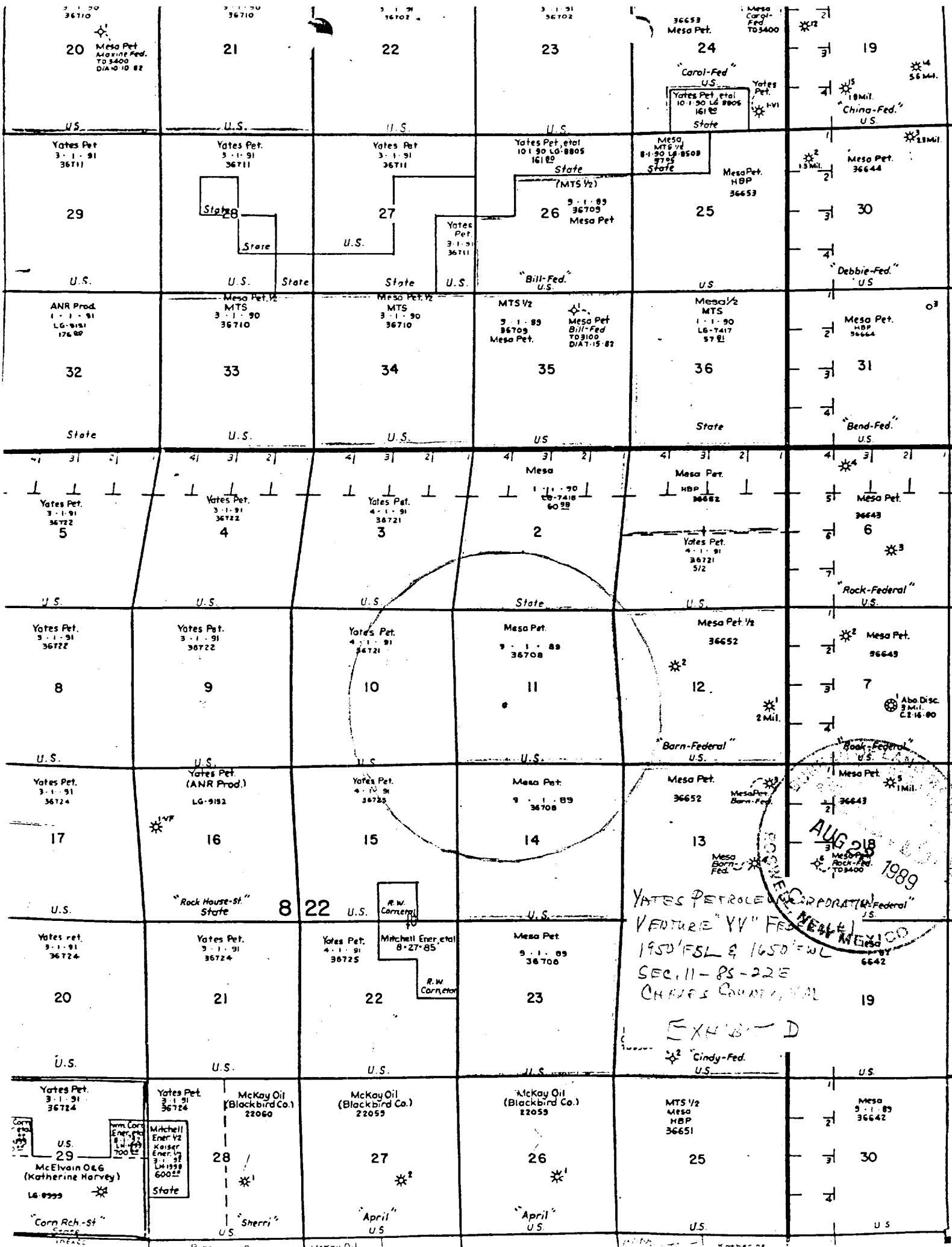
JOB No.



Cut. 1535 cu. yd  
Fill 1500 cu. yd

EXHIBIT C3





AUG 21 1989  
YATES PETROLEUM CORPORATION  
VENTURE "YV" FEDERAL  
1950 FSL & 1650 FSL  
SEC. 11-PS-22E  
CHARLES COUNTY, MD  
EXHIBIT D  
Cindy-Fed.  
U.S.