

fronts ch & goal

WCCAMP

WCCAMP

WCCAMP

WC

PG/BK
BK

Submit to Appropriate
District Office
State Lease - 6 copies
Fee Lease - 5 copies

State of New Mexico
Energy, Minerals and Natural Resources Department

Form C-101
Revised 1-1-89

OIL CONSERVATION DIVISION

P.O. Box 2088
Santa Fe, New Mexico 87504-2088

DISTRICT I
P.O. Box 1980, Hobbs, NM 88240

DISTRICT II
P.O. Drawer DD, Artesia, NM 88210

DISTRICT III
1000 Rio Brazos Rd., Aztec, NM 87410

API NO. (assigned by OCD on New Wells)

30-005-62751

5. Indicate Type of Lease

STATE ☒

FEE ☐

6. State Oil & Gas Lease No.

LG - 5246

APPLICATION FOR PERMIT TO DRILL, DEEPEN, OR PLUG BACK

1a. Type of Work:

DRILL ☒

RE-ENTER ☐

DEEPEN ☐

PLUG BACK ☐

b. Type of Well:

CL
WELL ☐

GAS
WELL ☒

OTHER ☐

SINGLE
ZONE ☐

MULTIPLE
ZONE ☐

7. Lease Name or Unit Agreement Name

Pathfinder "AFT" St.

2. Name of Operator

Yates Petroleum Corporation

8. Well No.

6

3. Address of Operator

105 South Fourth Street - Artesia, New Mexico 88210

9. Pool name or Wildcat

Wildcat Ordovician

4. Well Location

Unit Letter F : 1980' Feet From The North Line and 1980' Feet From The West Line

Section 21

Township 10 South

Range 27 East

NMPM

Chaves

County

10. Proposed Depth

6800'

11. Formation

Ordovician

12. Rotary or C.T.

Rotary

13. Elevations (Show whether DF, RT, GR, etc.)

3852.5' GR

14. Kind & Status Plug. Bond

Blanket

15. Drilling Contractor

Undesignated

16. Approx. Date Work will start

ASAP

17.

PROPOSED CASING AND CEMENT PROGRAM

| SIZE OF HOLE | SIZE OF CASING | WEIGHT PER FOOT | SETTING DEPTH | SACKS OF CEMENT | EST. TOP |
|--------------|----------------|-----------------|---------------|-----------------|-----------|
| 12 1/4" | 8 5/8" | 24# J-55 | Approx. 1400' | 700 sacks | Circulate |
| 7 7/8" | 5 1/2" | 15.5# J-55 | TD | 300 sacks | |

We propose to drill and test the Ordovician and intermediate formations. Approximately 1400' of surface casing will be set and cement circulated. If commercial, production casing will be run and cemented with adequate cover, perforated and stimulated as needed for production.

MUD Program: FW gel/LCM to 1400', cut brine to 4450', Polymer/Drispac to TD.

BOP Program: BOP's will be installed at the offset and tested daily.

GAS NOT DEDICATED

APPROVAL VALID FOR 180 DAYS
PERMIT EXPIRES 6-18-90
UNLAWFUL DRILLING UNDERWAY

IN ABOVE SPACE DESCRIBE PROPOSED PROGRAM: IF PROPOSAL IS TO DEEPEN OR PLUG BACK, GIVE DATA ON PRESENT PRODUCTIVE ZONE AND PROPOSED NEW PRODUCTIVE ZONE. GIVE BLOWOUT PREVENTER PROGRAM, IF ANY.

I hereby certify that the information above is true and complete to the best of my knowledge and belief.

SIGNATURE

Clifton R. May

TITLE

Permit Agent

DATE

12-18-89

TYPE OR PRINT NAME

Clifton R. May

(505)
TELEPHONE NO. 748-1471

(This space for State Use)

ORIGINAL SIGNED BY

MIKE WILLIAMS

APPROVED BY

SUPERVISOR, DISTRICT II

TITLE

DATE

DEC 18 1989

CONDITIONS OF APPROVAL, IF ANY:

**NEW MEXICO OIL CONSERVATION COMMISSION
WELL LOCATION AND ACREAGE DEDICATION PLAT**

Form C-102
Supersedes C-128
Effective 1-1-65

All distances must be from the outer boundaries of the Section

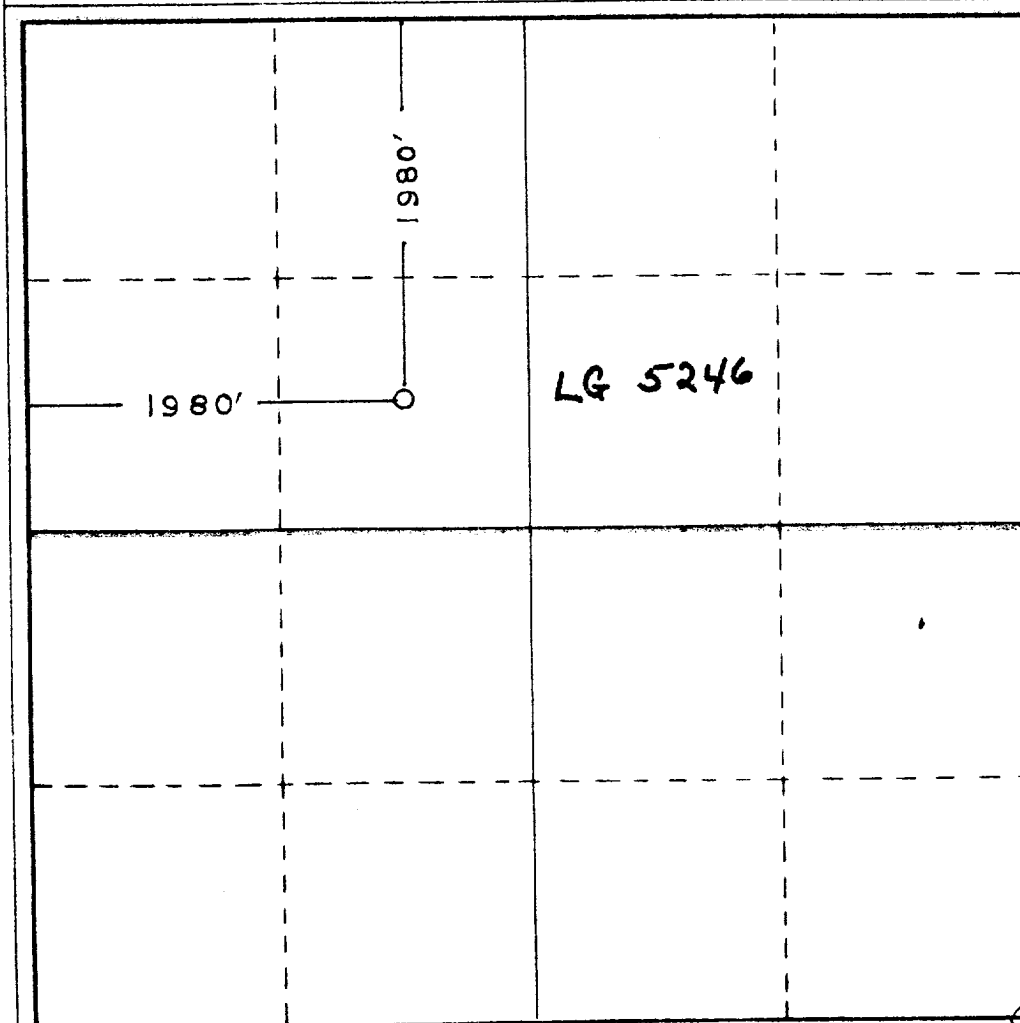
| | | | | | |
|--|-----------------------------------|----------------------|---------------------------------|---------------------------------|---------------|
| Operator Yates Petroleum Corporation | | | Lease Pathfinder "AFT" State | | Well No. 6 |
| Unit Letter F | Section 21 | Township 10 South | Range 27 East | County Chaves | |
| Actual Footage Location of Well: 1980' feet from the North line and 1980' feet from the West line | | | | | |
| Ground Level Elev. 3852.5' | Producing Formation ORDOVICIAN | | Pool WILCOAT OROVIAN | Dedicated Acreage: 320 Acres | |

1. Outline the acreage dedicated to the subject well by colored pencil or hachure marks on the plat below.
2. If more than one lease is dedicated to the well, outline each and identify the ownership thereof (both as to working interest and royalty).
3. If more than one lease of different ownership is dedicated to the well, have the interests of all owners been consolidated by communitization, unitization, force-pooling, etc?

☐ Yes ☐ No If answer is "yes," type of consolidation _____

If answer is "no," list the owners and tract descriptions which have actually been consolidated. (Use reverse side of this form if necessary.) _____

No allowable will be assigned to the well until all interests have been consolidated (by communitization, unitization, forced-pooling, or otherwise) or until a non-standard unit, eliminating such interests, has been approved by the Commission.



CERTIFICATION

I hereby certify that the information contained herein is true and complete to the best of my knowledge and belief.

Clifton R. May

Name

Clifton R. May

Position

Permit Agent

Company

Yates Petroleum Corporation

Date

12-18-89

I hereby certify that the well location shown on this plat was plotted from field notes of actual surveys made by me or under my supervision, and that the same is true and correct to the best of my knowledge and belief.

12-18-89

Date Surveyed

HERSCHEL

Registered Professional Engineer and Surveyor 3640

Certificate No. 2648

0 330 660 990 1320 1650 1980 2310 2640 2000 1300 1000 800 0