

STATE OF NEW MEXICO
ENERGY AND MINERALS DEPARTMENT

C CONSERVATION DIVISION

30-005-62752
Form C-101
Revised 10-1-78

NO. OF COPIES RECEIVED	
DISTRIBUTION	
SANTA FE	
FILE	
U.S.G.S.	
LAND OFFICE	
OPERATOR	

P. O. BOX 2088
SANTA FE, NEW MEXICO 87501
JAN 22 '90

O. C. D.
ARTESIAN OFFICE

5A. Indicate Type of Lease
STATE ☒ FEE ☐
5. State Oil & Gas Lease No.
LG 8007

APPLICATION FOR PERMIT TO DRILL, DEEPEN, OR PLUG BACK

1a. Type of Work DRILL <input checked="" type="checkbox"/> DEEPEN <input type="checkbox"/> PLUG BACK <input type="checkbox"/>		7. Unit Agreement Name NA
b. Type of Well OIL WELL <input type="checkbox"/> GAS WELL <input checked="" type="checkbox"/> OTHER <input type="checkbox"/>		8. Farm or Lease Name Samedan "35" State
2. Name of Operator BHP PETROLEUM COMPANY INC. Ph.915-688-1800		9. Well No. 1
3. Address of Operator 6 Desta Drive, Ste.3200 Midland, Texas 79705-5510		10. Field and Pool, or Wildcat Rabbit Flats-PrePermian (EXTENSION)
4. Location of Well UNIT LETTER J LOCATED 1980' FEET FROM THE South LINE AND 1660' FEET FROM THE East LINE OF SEC. 35 TWP. 10S RGE. 26E NMPM		12. County Chaves
19. Proposed Depth 6800'		19A. Formation Ellenburger
20. Rotary or C.T. Rotary		
21. Elevations (Show whether DF, RT, etc.) 3646.2 GL	21A. Kind & Status Plug. Bond Statewide	21B. Drilling Contractor Peterson Drilling
22. Approx. Date Work will start On Approval Date		

23.

PROPOSED CASING AND CEMENT PROGRAM

SIZE OF HOLE	SIZE OF CASING	WEIGHT PER FOOT	SETTING DEPTH	SACKS OF CEMENT	EST. TOP
12-1/4"	8-5/8"	24.0# J-55	1200'±	650 ±	Circulate
7-7/8"	5-1/2"	15.5# J-55	6800'±	700 ±	2100'±

Propose to drill to about 6800' to test Ellenburger and shallower formations.

Post ID-1
1-26-90

If commercial production is indicated, the well will be completed in the deepest favorable formation, by cementing production casing, selectively perforating and stimulating. Run 2-7/8" tubing and test well.

New box
+ API

See attached "Supplemental Data".

APPROVAL VALID FOR 180 DAYS
7/23/90
CIVIL ENGINEER

IN ABOVE SPACE DESCRIBE PROPOSED PROGRAM: IF PROPOSAL IS TO DEEPEN OR PLUG BACK, GIVE DATA ON PRESENT PRODUCTIVE ZONE AND PROPOSED NEW PRODUCTIVE ZONE. GIVE BLOWOUT PREVENTER PROGRAM, IF ANY.

I hereby certify that the information above is true and complete to the best of my knowledge and belief.

Signed Jerry W. Long Title Agent for BHP Date January 20, 1990

(This space for State Use)

ORIGINAL SIGNED BY
MIKE WILLIAMS

APPROVED BY SUPERVISOR, DISTRICT II TITLE DATE JAN 23 1990

CONDITIONS OF APPROVAL, IF ANY:

Submit to Appropriate
District Office
State Lease - 4 copies
Fee Lease - 3 copies

State of New Mexico
Energy, Minerals and Natural Resources Department

Form C-102
Revised 1-1-89

OIL CONSERVATION DIVISION

P.O. Box 2088
Santa Fe, New Mexico 87504-2088

DISTRICT I
P.O. Box 1980, Hobbs, NM 88240

DISTRICT II
P.O. Drawer DD, Artesia, NM 88210

DISTRICT III
1000 Rio Brazos Rd., Aztec, NM 87410

WELL LOCATION AND ACREAGE DEDICATION PLAT

All Distances must be from the outer boundaries of the section

Operator BHP PETROLEUM COMPANY INC. (AMERICAS)		Lease Samedan 35 State		Well No. 1
Unit Letter J	Section 35	Township 10 South	Range 26 East	County Chaves
Actual Footage Location of Well: 1980 feet from the South line and 1660 feet from the East line				
Ground level Elev. 3646.2	Producing Formation Ellenburger	Pool (Extension) Rabbit Flats-PrePermian		Dedicated Acreage: 320 Acres

1. Outline the acreage dedicated to the subject well by colored pencil or hatchure marks on the plat below.

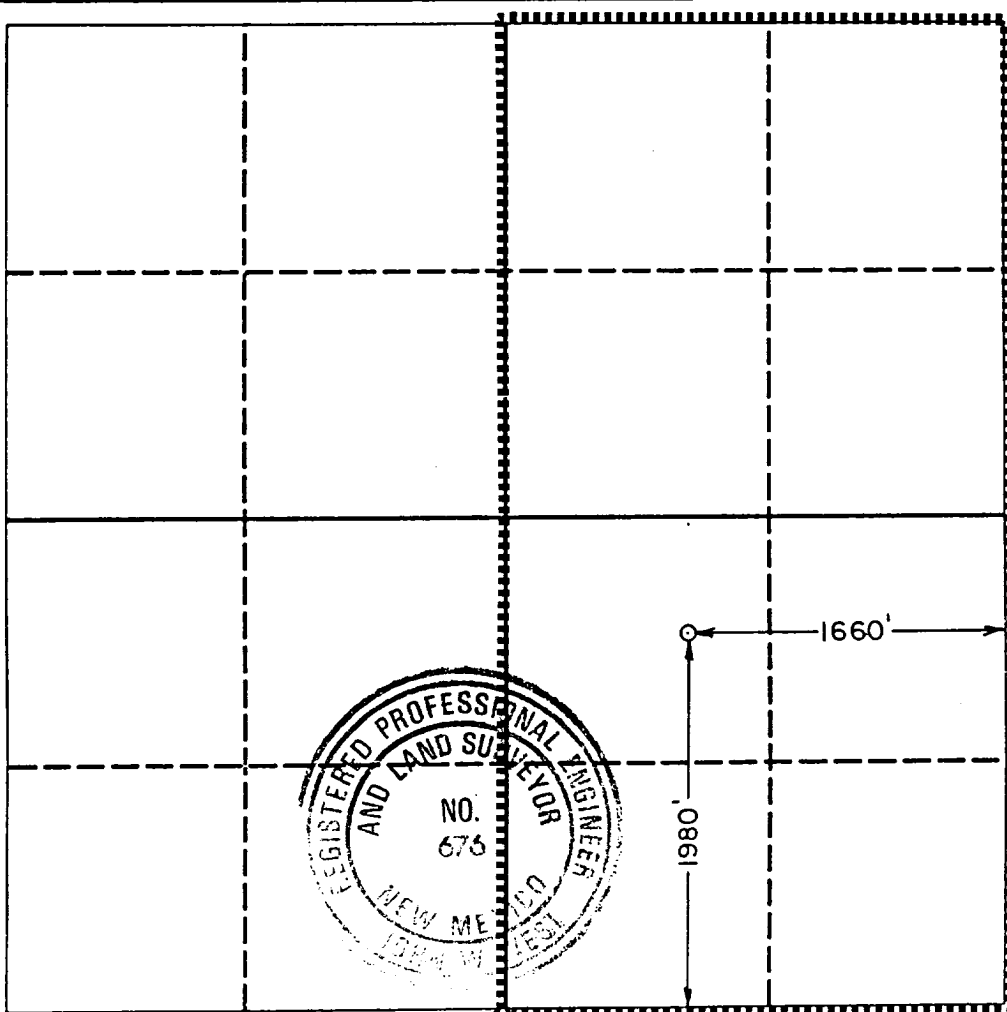
2. If more than one lease is dedicated to the well, outline each and identify the ownership thereof (both as to working interest and royalty).
SINGLE LEASE

3. If more than one lease of different ownership is dedicated to the well, have the interest of all owners been consolidated by communitization, unitization, force-pooling, etc.?

☐ Yes ☐ No If answer is "yes" type of consolidation NA

If answer is "no" list the owners and tract descriptions which have actually been consolidated. (Use reverse side of this form if necessary.)

No allowable will be assigned to the well until all interests have been consolidated (by communitization, unitization, forced-pooling, or otherwise) or until a non-standard unit, eliminating such interest, has been approved by the Division.



OPERATOR CERTIFICATION

I hereby certify that the information contained herein is true and complete to the best of my knowledge and belief.

Signature
JERRY W. LONG
Printed Name
JERRY W. LONG

Position
Agent
Company
BHP PETROLEUM COMPANY INC.
Date
January 20, 1990

SURVEYOR CERTIFICATION

I hereby certify that the well location shown on this plat was plotted from field notes of actual surveys made by me or under my supervision, and that the same is true and correct to the best of my knowledge and belief.

Date Surveyed
January 18, 1990
Signature & Seal of
Professional Surveyor

Signature
RONALD J. EIDSON
Certificate No. JOHN W. WEST, 676
RONALD J. EIDSON, 3239

SUPPLEMENTAL DATA

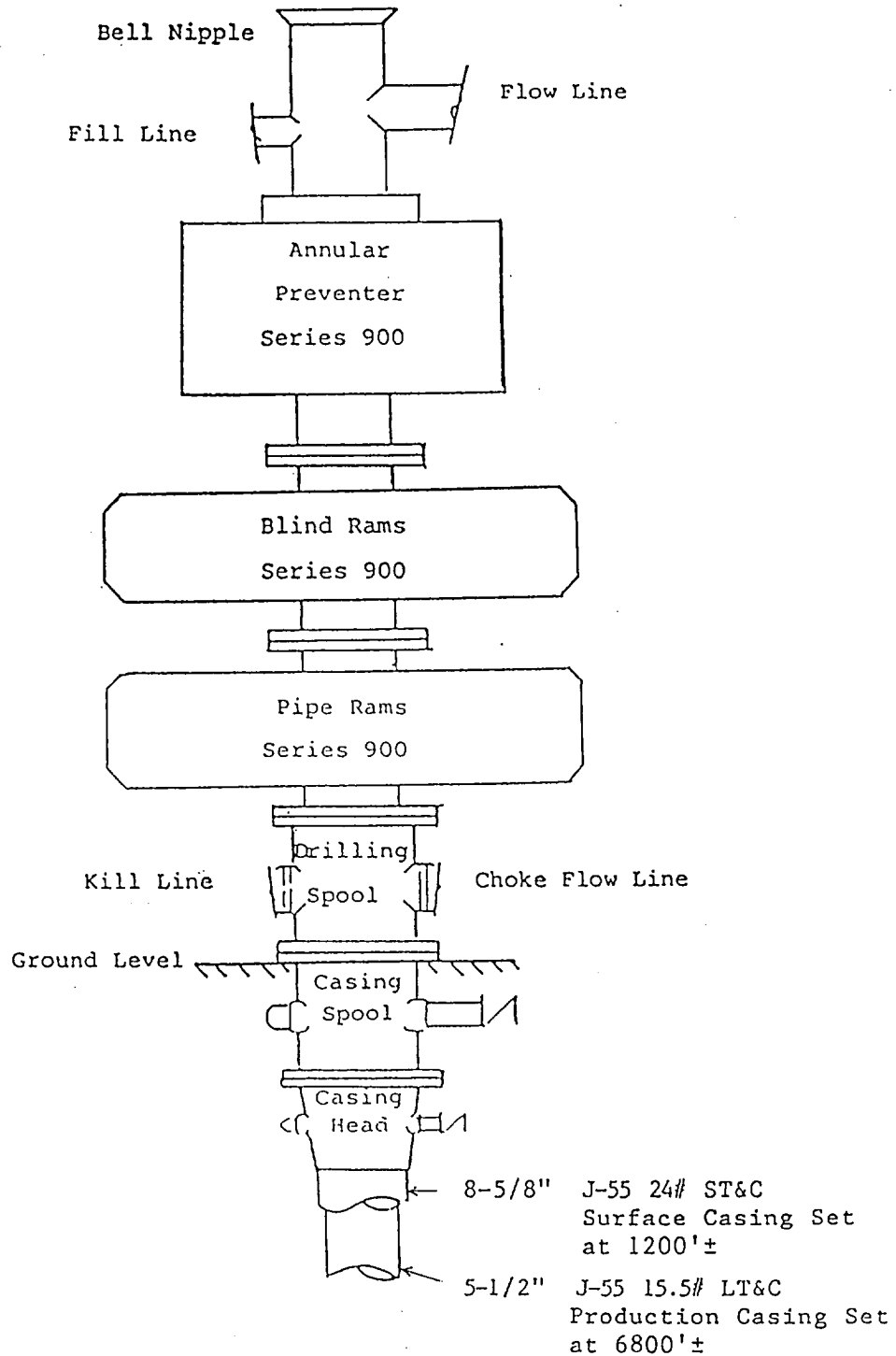
BHP PETROLEUM COMPANY INC.
No.1 Samedan "35" State
1980'FSL 1660'FEL Sec.35-10S-26E
Chaves County, N.M.

State Lease LG 8007

The following items supplement the information on Form C-101.

1. PRESSURE CONTROL EQUIPMENT: Pressure control equipment will include a 3000#WP blowout preventer stack with a Series 900 annular preventer and Series 900 blind and pipe rams. The BOP stack will include a kill line and choke manifold tested to 2000 psi. BOP hydraulic controls will be operated at least daily. Mud weight will be monitored to control bottom hole pressure. A kelly cock will be installed on the kelly joint and full opening safety valve will be available on the rig floor. A diagrammatic sketch of the BOP stack is attached.
2. SURFACE DAMAGES: The well and access road are located on State surface leased by LA Ranch Partnership. Mr. David Carpenter, partner, has been consulted regarding surface disturbance. A surface damage settlement will be negotiated with Mr. Carpenter.

BHP PETROLEUM COMPANY INC.
No.1 Samedan "35" State
1980'FSL 1660'FEL Sec.35-10S-26E
Chaves County, N.M.



BLOWOUT PREVENTER STACK

3000#WP

Rams Operated Daily

JHP PETROLEUM COMPANY INC.
No.1 Samedan "35" State
1980' FSL 1660' FEL Sec. 35-10S-26E
Chaves County, N.M.

