

Submit to Appropriate
District Office
State Lease -- 6 copies
Fee Lease -- 5 copies

State of New Mexico
Energy, Minerals and Natural Resources Department

Form C-101
Revised 1-1-89

DISTRICT I
P.O. Box 1980, Hobbs, NM 88240

DISTRICT II
P.O. Drawer DD, Artesia, NM 88210

DISTRICT III
1000 Rio Brazos Rd., Aztec, NM 87410

OIL CONSERVATION DIVISION

P.O. Box 2088
Santa Fe, New Mexico 87504-2088

DEC 15 '89

O. C. D.

API NO. (assigned by OCD on New Wells)

30-005-62753

5. Indicate Type of Lease
STATE ☐ FEE ☒

6. State Oil & Gas Lease No.

APPLICATION FOR PERMIT TO DRILL, DEEPEN, OR PLUG BACK

1a. Type of Work:

DRILL ☒ RE-ENTER ☐ DEEPEN ☐ PLUG BACK ☐

b. Type of Well:

OIL WELL ☒ GAS WELL ☐ OTHER ☐
SINGLE ZONE ☒ MULTIPLE ZONE ☐

2. Name of Operator

Yates Exploration Co., Inc. ✓

3. Address of Operator

P.O. Box 0 Albuquerque, NM 87103

4. Well Location

Unit Letter C : 990 Feet From The North Line and 2298 Feet From The West Line

Section 19 Township 9S Range 28E NMPM Chaves County

10. Proposed Depth

2330

11. Formation

San Andres

12. Rotary or C.T.

Rotary

13. Elevations (Show whether DF, RT, GR, etc.)

3898.2

14. Kind & Status Plug Bond

One well

15. Drilling Contractor

Rainbow Drilling

16. Approx. Date Work will start

1/30/90

17.

PROPOSED CASING AND CEMENT PROGRAM

SIZE OF HOLE	SIZE OF CASING	WEIGHT PER FOOT	SETTING DEPTH	SACKS OF CEMENT	EST. TOP
12 1/4	8 5/8	23	300	200sx	Surface
6 1/2	4 1/2	10.50	TD	125sx	1600'

The plan is to drill a 12 1/4" hole to 300' and set casing. 8 5/8" casing will be cemented with 200 sx of cement, circulated to the surface. The casing will be tested to 650 psi for 30 min. The hole will then be drilled with a 6 1/2" bit to TD. Logs will be run and 4 1/2" casing will be set or the well will be plugged depending on the outcome of the logs.

Post TD-1
12-29-89
New & API

APPROVAL VALID FOR 180 DAYS

PERMIT EXPIRES 6-21-90

UNLESS DRILLING UNDERWAY

IN ABOVE SPACE DESCRIBE PROPOSED PROGRAM: IF PROPOSAL IS TO DEEPTEN OR PLUG BACK, GIVE DATA ON PRESENT PRODUCTIVE ZONE AND PROPOSED NEW PRODUCTIVE ZONE. GIVE BLOWOUT PREVENTER PROGRAM, IF ANY.

I hereby certify that the information above is true and complete to the best of my knowledge and belief.

SIGNATURE Terrell A. Dobkins TITLE Engineer DATE 12/14/89

TYPE OR PRINT NAME Terrell A. Dobkins (505) TELEPHONE NO 622-0553

(This space for State Use)

ORIGINAL SIGNED BY
MIKE WILLIAMS
SUPERVISOR, DISTRICT I

APPROVED BY DATE

CONDITIONS OF APPROVAL, IF ANY:

DEC 21 1989

Submit to Appropriate
District Office
State Lease - 4 copies
Fee Lease - 3 copies

State of New Mexico
Energy, Minerals and Natural Resources Department.

Form C-102
Revised 1-1-89

OIL CONSERVATION DIVISION

P.O. Box 2088
Santa Fe, New Mexico 87504-2088

DISTRICT I
P.O. Box 1980, Hobbs, NM 88240

DISTRICT II
P.O. Drawer DD, Artesia, NM 88210

DISTRICT III
1000 Rio Brazos Rd., Aztec, NM 87410

WELL LOCATION AND ACREAGE DEDICATION PLAT

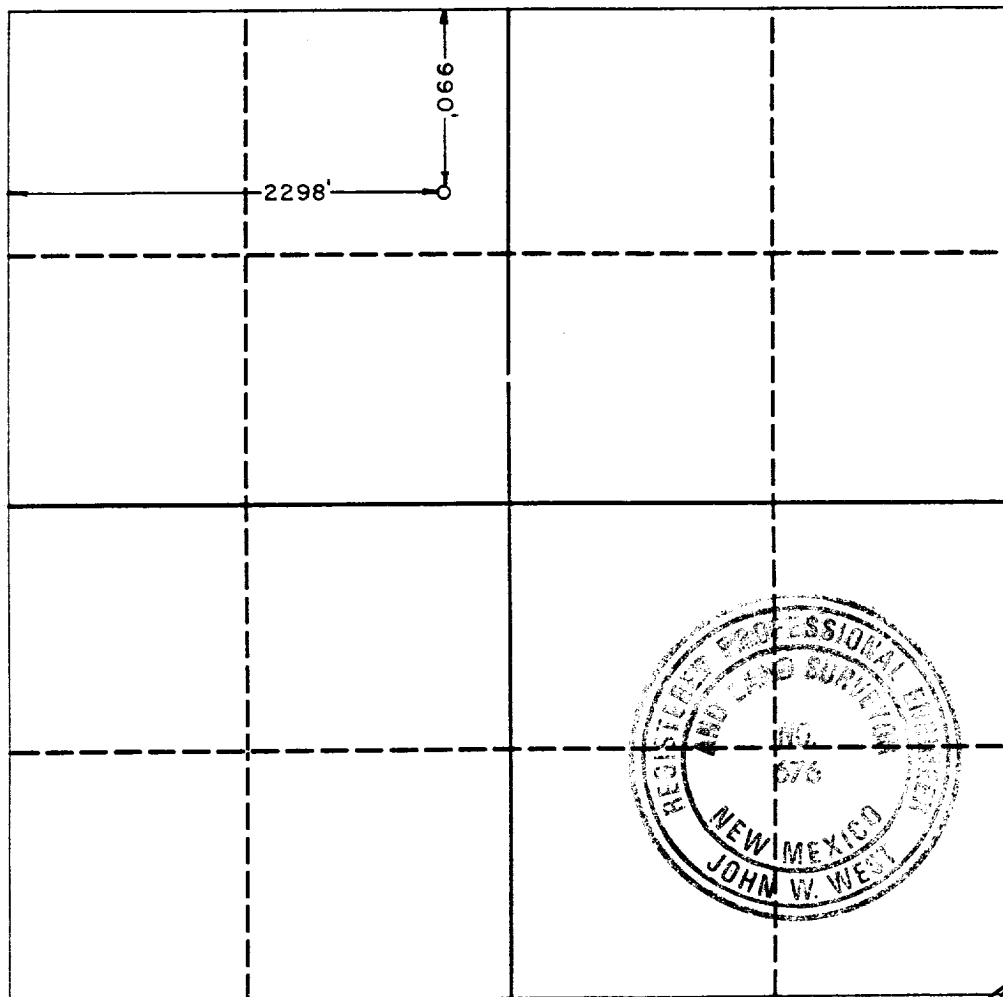
All Distances must be from the outer boundaries of the section

Operator YATES EXPLORATION, INC.			Lease Sardine		Well No. 1
Unit Letter C	Section 19	Township 9 South	Range 28 East	County Chaves	
NMPM					

Actual Footage Location of Well:

990	feet from the	North	line and	2298	feet from the	West	line
Ground level Elev. 3898.2	Producing Formation San Andres		Pool Aciete Negra S.A.		Dedicated Acreage: 40 Acres		

- Outline the acreage dedicated to the subject well by colored pencil or hatchure marks on the plat below.
 - If more than one lease is dedicated to the well, outline each and identify the ownership thereof (both as to working interest and royalty).
 - If more than one lease of different ownership is dedicated to the well, have the interest of all owners been consolidated by communitization, unitization, force-pooling, etc.
☐ Yes ☒ No If answer is "yes" type of consolidation _____
If answer is "no" list the owners and tract descriptions which have actually been consolidated. (Use reverse side of this form if necessary.) See reverse side of this form.
- No allowable will be assigned to the well until all interests have been consolidated (by communitization, unitization, forced-pooling, or otherwise) or until a non-standard unit, eliminating such interest, has been approved by the Division.



OPERATOR CERTIFICATION

I hereby certify that the information contained herein is true and complete to the best of my knowledge and belief.

Signature
Terrell A. Dabkins
Printed Name
Engineer
Position
Yates Exploration Co., Inc.
Company
12/14/89
Date

SURVEYOR CERTIFICATION

I hereby certify that the well location shown on this plat was plotted from field notes of actual surveys made by me or under my supervision, and that the same is true and correct to the best of my knowledge and belief.

Date Surveyed
November 21, 1989
Signature & Seal of
Professional Surveyor

Signature
Certificate No. JOHN W. WEST, 676
RONALD J. EIDSON, 3239

0 330 660 990 1320 1650 1980 2310 2640 2000 1500 1000 500 0

11-27-89: 0.78125% interest remains unleased; remainder(99.21875%) is held by leases of Operator and/or participating parties.