

Submit to Appropriate
District Office
State Lease - 6 copies
Fee Lease - 5 copies

State of New Mexico
Energy, Minerals and Natural Resources Department

Form C-101
Revised 1-1-89

OIL CONSERVATION DIVISION

P.O. Box 2088
Santa Fe, New Mexico 87504-2088

DISTRICT I
P.O. Box 1980, Hobbs, NM 88240

DISTRICT II
P.O. Drawer DD, Artesia, NM 88210

DISTRICT III
1000 Rio Brazos Rd., Aztec, NM 87410

SEP 28 '90

API NO. (assigned by OCD on New Wells)

30-405-62800

5. Indicate Type of Lease

STATE ☒

FEE ☐

6. State Oil & Gas Lease No.

LG-5246

APPLICATION FOR PERMIT TO DRILL, DEEPEN, OR PLUG BACK

1a. Type of Work:

DRILL ☒

RE-ENTER ☐

DEEPEN ☐

ARTESIA OFFICE

PLUG BACK ☐

b. Type of Well:

OIL
WELL ☒

GAS
WELL ☐

OTHER ☐

SINGLE
ZONE ☒

MULTIPLE
ZONE ☐

7. Lease Name or Unit Agreement Name

Frank "P" State

2. Name of Operator

Collins Oil & Gas Corporation

8. Well No.

8

3. Address of Operator

P.O. Box 2443, Roswell, NM 88202-2443

9. Pool name or Wildcat

Diablo-San-Andres

4. Well Location

Unit Letter

I

: 2310

Feet From The

South

Line and

990

Feet From The

East

Line

Section

21

Township

10S

Range

27E.

NMPM

Chaves

County

10. Proposed Depth

2200

11. Formation

San-Andres

12. Rotary or C.T.

Rotary

13. Elevations (Show whether DF, RT, GR, etc.)

3836.3 GL

14. Kind & Status Plug. Bond

Blanket

15. Drilling Contractor

United

16. Approx. Date Work will start

10-20-90

17.

PROPOSED CASING AND CEMENT PROGRAM

SIZE OF HOLE	SIZE OF CASING	WEIGHT PER FOOT	SETTING DEPTH	SACKS OF CEMENT	EST. TOP
12 1/2"	8-5/8"	23	450	sufficient to circulate	
7-7/8"	4 1/2"	10.50	2200	200	

Post ID-2
10-6-90
New line & API

180
4/3/91

IN ABOVE SPACE DESCRIBE PROPOSED PROGRAM: IF PROPOSAL IS TO DEEPEN OR PLUG BACK, GIVE DATA ON PRESENT PRODUCTIVE ZONE AND PROPOSED NEW PRODUCTIVE ZONE. GIVE BLOWOUT PREVENTER PROGRAM, IF ANY.

I hereby certify that the information above is true and complete to the best of my knowledge and belief.

SIGNATURE Pres. Collins O/G TITLE Pres. Collins O/G DATE 9-26-90

TYPE OR PRINT NAME ROY D. COLLINS TELEPHONE NO. 623-2040

(This space for State Use)

ORIGINAL SIGNED BY

MIKE WILLIAMS

OCT 3 1990

APPROVED BY SUPERVISOR, DISTRICT II TITLE DATE

CONDITIONS OF APPROVAL, IF ANY:

NEW MEXICO OIL CONSERVATION COMMISSION WELL LOCATION AND ACREAGE DEDICATION PLAT

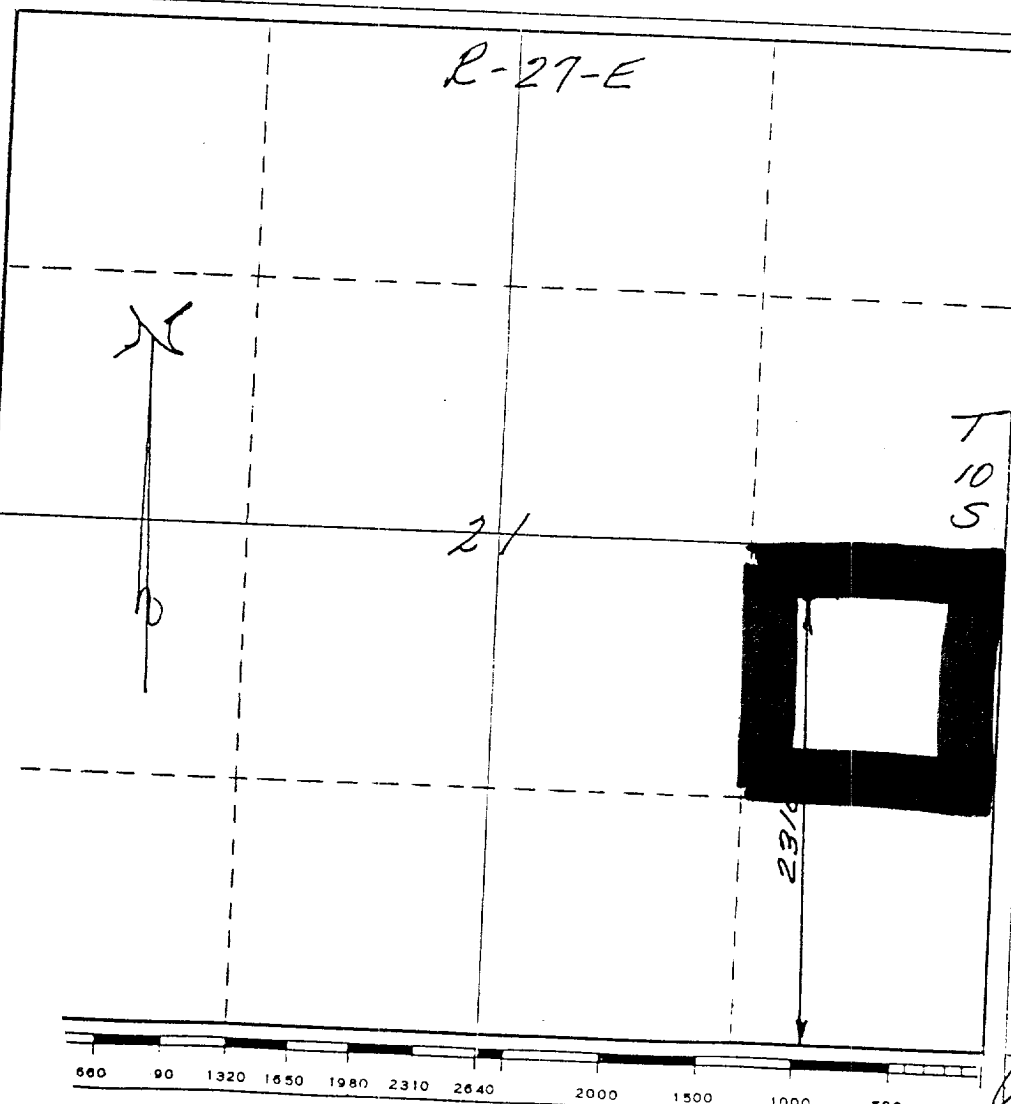
Form C-102
Supersedes C-128
Effective 1-1-65

All distances must be from the outer boundaries of the Section.

Operator COLLINS OIL AND GAS CORP.				Lease FRANK P.		Well No. 8
Unit Letter I	Section 21	Township 10-S	Range 27-E	County CHAVES		
Actual Footage Location of Well: 2310 feet from the SOUTH line and 990 feet from the EAST line						
Ground Level Elev. 3836.3	Producing Formation SAN ANDRES		Pool DIABLO - SAN ANDRES	Dedicated Acreage: 40 Acres		

1. Outline the acreage dedicated to the subject well by colored pencil or hatchure marks on the plat below.
2. If more than one lease is dedicated to the well, outline each and identify the ownership thereof (both as to working interest and royalty).
3. If more than one lease of different ownership is dedicated to the well, have the interests of all owners been consolidated by communitization, unitization, force-pooling, etc?
☐ Yes ☐ No If answer is "yes," type of consolidation _____

If answer is "no," list the owners and tract descriptions which have actually been consolidated. (Use reverse side of this form if necessary.) _____
 No allowable will be assigned to the well until all interests have been consolidated (by communitization, unitization, forced-pooling, or otherwise) or until a non-standard unit, eliminating such interests, has been approved by the Commission.



CERTIFICATION	
I hereby certify that the information contained herein is true and complete to the best of my knowledge and belief.	
Name	Frank P. Collins
Position	Pres. Collins O/G
Company	Collins O/G
Date	9-26-90
I hereby certify that the well location shown on this plat was plotted from field notes of actual surveys made by me or under my supervision, and that the same is true and correct to the best of my knowledge and belief.	
Date Surveyed	SEPTEMBER 23, 1989
Registered Professional Engineer and/or Land Surveyor J.C. Greenclose	
Certificate No.	N.M. 4574