

Submit to Appropriate  
District Office  
State Lease - 6 copies  
Fee Lease - 5 copies

State of New Mexico  
Energy, Minerals and Natural Resources Department

Form C-101  
Revised 1-1-89

DISTRICT I  
P.O. Box 1980, Hobbs, NM 88240

DISTRICT II  
P.O. Drawer DD, Artesia, NM 88210

DISTRICT III  
1000 Rio Brazos Rd., Aztec, NM 87410

OIL CONSERVATION DIVISION

P.O. Box 2088  
Santa Fe, New Mexico 87504-2088

NOV 21 '90

O. C. D.

API NO. (assigned by OCD on New Wells)

31-005-62810

5. Indicate Type of Lease

STATE ☒

FEE ☐

6. State Oil & Gas Lease No.

LG-5246

7. Lease Name or Unit Agreement Name

Pathfinder "AFT" State

8. Well No.

11

9. Pool name or Wildcat

Diablo-Fusselman

Asac.

4. Well Location

Unit Letter J : 1650 Feet From The South Line and 1980 Feet From The East Line

Section 21 Township 10S Range 27E NMPM Chaves County

10. Proposed Depth

6,500

11. Formation

Fusselman

12. Rotary or C.T.

Rotary

13. Elevations (Show whether DF, RT, GR, etc.)

3835.

14. Kind & Status Plug. Bond

Blanket

15. Drilling Contractor

Undesignated

16. Approx. Date Work will start

As soon as possible

17. PROPOSED CASING AND CEMENT PROGRAM

SIZE OF HOLE	SIZE OF CASING	WEIGHT PER FOOT	SETTING DEPTH	SACKS OF CEMENT	EST. TOP
14 3/4"	10 3/4"	40.5#	1000'	700 sacks	circulated
9 1/2"	7 5/8"	26.4# & 29.7#	TD	As warranted	

We propose to drill and test the Fusselman and intermediate formations. Approximately 1000' of surface casing will be set and cement circulated. If commercial, production casing will be run and cemented with adequate cover, perforated and stimulated as needed for production.

MUD PROGRAM: FW Gel/LCM to 1400', Brine to 4800', MF55 - Starch to TD.

BOP PROGRAM: BOP's will be installed at the offset and tested daily.

APPROVAL VALID FOR 180 DAYS

PERMIT EXPIRES 5/21/91

UNLESS DRILLING UNDERWAY

IN ABOVE SPACE DESCRIBE PROPOSED PROGRAM: IF PROPOSAL IS TO DEEPEN OR PLUG BACK, GIVE DATA ON PRESENT PRODUCTIVE ZONE AND PROPOSED NEW PRODUCTIVE ZONE. GIVE BLOWOUT PREVENTER PROGRAM, IF ANY.

I hereby certify that the information above is true and complete to the best of my knowledge and belief.

SIGNATURE Ken Beardemph1 TITLE Landman DATE 11-21-90

TYPE OR PRINT NAME Ken Beardemph1 TELEPHONE NO.

(This space for State Use)

ORIGINAL SIGNED BY

MIKE WILLIAMS

SUPERVISOR, DISTRICT II

APPROVED BY \_\_\_\_\_ DATE NOV 21 1990

CONDITIONS OF APPROVAL, IF ANY:

**NEW MEXICO OIL CONSERVATION COMMISSION  
WELL LOCATION AND ACREAGE DEDICATION PLAT**

Form C-102  
Supersedes C-128  
Effective 1-1-65

All distances must be from the outer boundaries of the Section

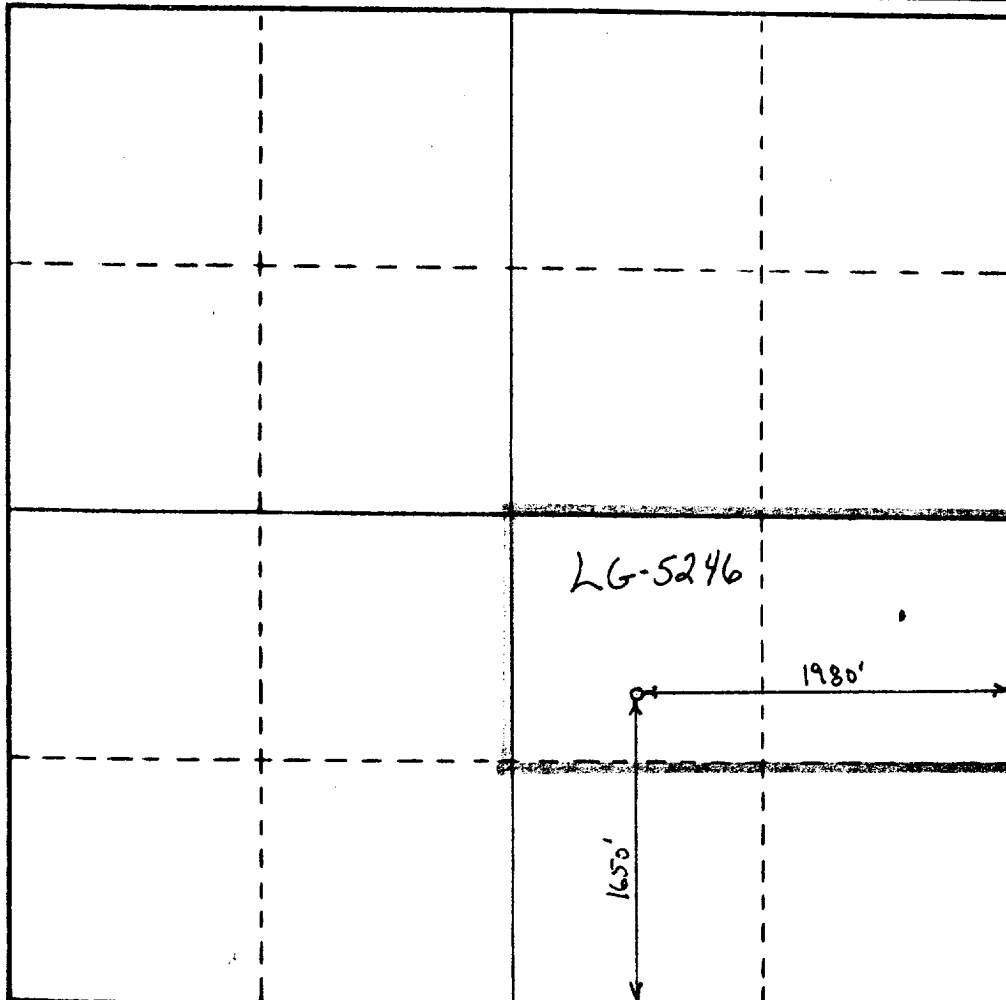
Operator <b>Yates Petroleum Corporation</b>			Lease <b>Pathfinder "AFT" State</b>		Well No. <b>11</b>
Unit Letter <b>J</b>	Section <b>21</b>	Township <b>10 South</b>	Range <b>27 East</b>	County <b>Chaves</b>	
Actual Footage Location of Well: <div style="display: flex; justify-content: space-between;"> <span>1650 feet from the South line and</span> <span>1980 feet from the East line</span> </div>					
Ground Level Elev. <b>3835</b>	Producing Formation <b>Fusselman</b>		Prod. <b>Diablo - Fusselman</b>		Dedicated Acreage: <b>80</b> Acres

1. Outline the acreage dedicated to the subject well by colored pencil or hatchure marks on the plat below.
2. If more than one lease is dedicated to the well, outline each and identify the ownership thereof (both as to working interest and royalty).
3. If more than one lease of different ownership is dedicated to the well, have the interests of all owners been consolidated by communitization, unitization, force-pooling, etc?

☐ Yes   ☐ No   If answer is "yes," type of consolidation \_\_\_\_\_

If answer is "no," list the owners and tract descriptions which have actually been consolidated. (Use reverse side of this form if necessary.) \_\_\_\_\_

No allowable will be assigned to the well until all interests have been consolidated (by communitization, unitization, forced-pooling, or otherwise) or until a non-standard unit, eliminating such interests, has been approved by the Commission.



**CERTIFICATION**

I hereby certify that the information contained herein is true and complete to the best of my knowledge and belief.

*Ken Boardman*

Name  
**KEN BOARDMAN**

Position  
**LANDMAN**

Company  
**Yates Pet. Corp.**

Date  
**11-21-90**

I hereby certify that the well location shown on this plat was plotted from field notes of actual surveys made by me or under my supervision, and that the same is true and correct to the best of my knowledge and belief.

Date Surveyed  
**11-21-90**  
**HERSCHEL JONES**  
 Registered Professional Engineer  
 and/or Land Surveyor  
**3640**

Certificate No.  
**3640**



# YATES PETROLEUM CORPORATION

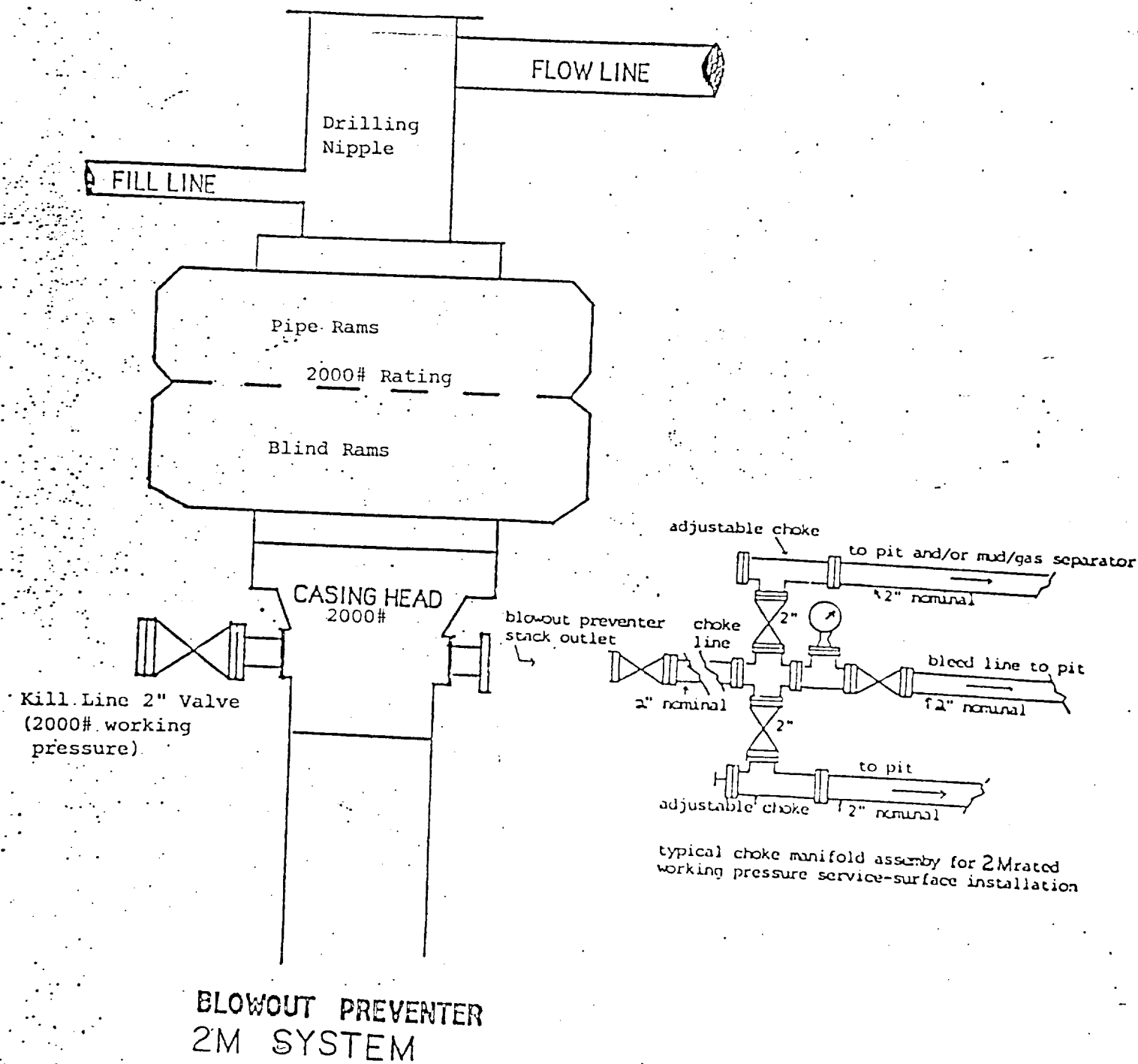


EXHIBIT B