

Submit to Appropriate
District Office
State Lease - 5 copies
Fee Lease - 5 copies

State of New Mexico
Energy, Minerals and Natural Resources Department

Form C-101
Revised 1-1-89

OIL CONSERVATION DIVISION

DISTRICT I
P.O. Box 1980, Hobbs, NM 88240

DISTRICT II
P.O. Drawer DD, Artesia, NM 88210

DISTRICT III
1000 Rio Brazos Rd., Aztec, NM 87410

P.O. Box 2088
Santa Fe, New Mexico 87504-2088

RECEIVED

API NO. (assigned by OCD on New Wells)

30-005-62828

5. Indicate Type of Lease

STATE ☒ FEE ☐

6. State Oil & Gas Lease No.

LG-5246

7. Lease Name or Unit Agreement Name

Pathfinder AFT State

8. Well No.

12

9. Pool name or Wildcat

Diablo-Fusselman Associated

APPLICATION FOR PERMIT TO DRILL, DEEPEN, OR PLUG BACK

1a. Type of Work:

DRILL ☒

RE-ENTER ☐

DEEPEN ☐

PLUG BACK ☐
ARTESIA, OFFICE

b. Type of Well:

OIL WELL ☒

GAS WELL ☐

OTHER ☐

SINGLE ZONE ☐

MULTIPLE ZONE ☐

2. Name of Operator

Yates Petroleum Corporation

3. Address of Operator

105 South Fourth Street, Artesia, NM 88210

4. Well Location

Unit Letter G : 2300 Feet From The North Line and 2214 Feet From The East Line

Section 21

Township 10S

Range 27E

NMPM Chaves

County

10. Proposed Depth

6,500

11. Formation

Fusselman

12. Rotary or C.T.

Rotary

13. Elevations (Show whether DF, RT, GR, etc.)

3833' GR

14. Kind & Status Plug. Bond

Blanket

15. Drilling Contractor

Undesignated

16. Approx. Date Work will start

As soon as possible

17. PROPOSED CASING AND CEMENT PROGRAM

SIZE OF HOLE	SIZE OF CASING	WEIGHT PER FOOT	SETTING DEPTH	SACKS OF CEMENT	EST. TOP
12 1/4"	9 5/8"	36#	1000'	700 Sacks	circulated
8 3/4"	7"	26#	TD	As warranted	

We propose to drill and test the Fusselman and intermediate formations. Approximately 1000' of surface casing will be set and cement circulated. If commercial, production casing will be run and cemented with adequate cover, perforated and stimulated as needed for production.

MUD PROGRAM: FW Gel/LCM to 1400', cut Brine to 4700', MF55- Starch to TD.

BOP PROGRAM: BOP's will be installed at the offset and tested daily.

APPROVAL VALID FOR 180 DAYS

PERMIT EXPIRES 6/28/91

UNLESS DRILLING UNDERWAY

IN ABOVE SPACE DESCRIBE PROPOSED PROGRAM: IF PROPOSAL IS TO DEEPEN OR PLUG BACK, GIVE DATA ON PRESENT PRODUCTIVE ZONE AND PROPOSED NEW PRODUCTIVE ZONE. GIVE BLOWOUT PREVENTER PROGRAM, IF ANY.

I hereby certify that the information above is true and complete to the best of my knowledge and belief.

SIGNATURE

Clifton R. May

TITLE

Permit Agent

DATE

12-28-90

TYPE OR PRINT NAME

Clifton May

TELEPHONE NO.

(This space for State Use)

ORIGINAL SIGNED BY

MIKE WILLIAMS

APPROVED BY

SUPERVISOR, DISTRICT II

TITLE

DATE

12/28/90

CONDITIONS OF APPROVAL, IF ANY:

Submit to Appropriate
District Office
State Lease - 4 copies
Fee Lease - 3 copies

State of New Mexico
Energy, Minerals and Natural Resources Department

Form C-102
Revised 1-1-89

OIL CONSERVATION DIVISION

P.O. Box 2088
Santa Fe, New Mexico 87504-2088

DISTRICT I
P.O. Box 1980, Hobbs, NM 88240

DISTRICT II
P.O. Drawer DD, Artesia, NM 88210

DISTRICT III
1000 Rio Brazos Rd., Aztec, NM 87410

WELL LOCATION AND ACREAGE DEDICATION PLAT

All Distances must be from the outer boundaries of the section

Operator YATES PETROLEUM CORPORATION			Lease PATHFINDER "AFT" STATE		Well No. 12
Unit Letter G	Section 21	Township 10South	Range 27 East	County Chaves	
Actual Footage Location of Well: 2300 feet from the North line and 2214 feet from the East line					
Ground level Elev. 3833' GR.	Producing Formation FUSSELMAN		Pool DIABLO FUSSELMAN ASSOCIATED POOL	Dedicated Acreage: 80 Acres	

1. Outline the acreage dedicated to the subject well by colored pencil or hatchure marks on the plat below.
2. If more than one lease is dedicated to the well, outline each and identify the ownership thereof (both as to working interest and royalty).
3. If more than one lease of different ownership is dedicated to the well, have the interest of all owners been consolidated by communitization, unitization, force-pooling, etc?
☐ Yes ☐ No If answer is "yes" type of consolidation _____
If answer is "no" list the owners and tract descriptions which have actually been consolidated. (Use reverse side of this form if necessary.)
No allowable will be assigned to the well until all interests have been consolidated (by communitization, unitization, forced-pooling, or otherwise) or until a non-standard unit, eliminating such interest, has been approved by the Division.

OPERATOR CERTIFICATION

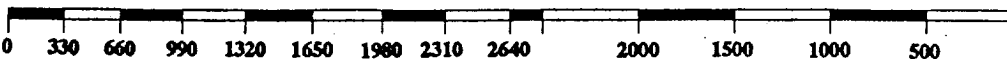
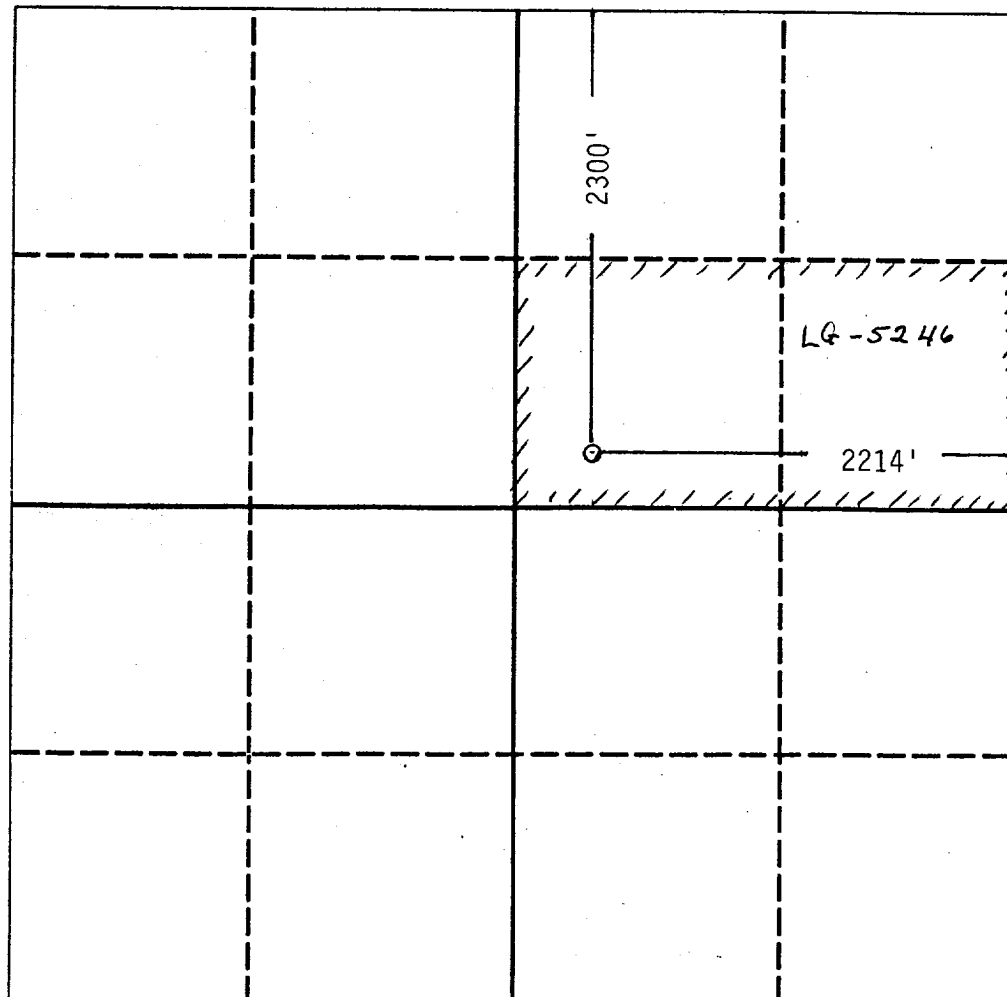
I hereby certify that the information contained herein is true and complete to the best of my knowledge and belief.

Signature
Clifton R. May
Printed Name
CLIFTON R. MAY
Position
PERMIT AGENT
Company
YATES PETROLEUM CORP.
Date
12-28-90

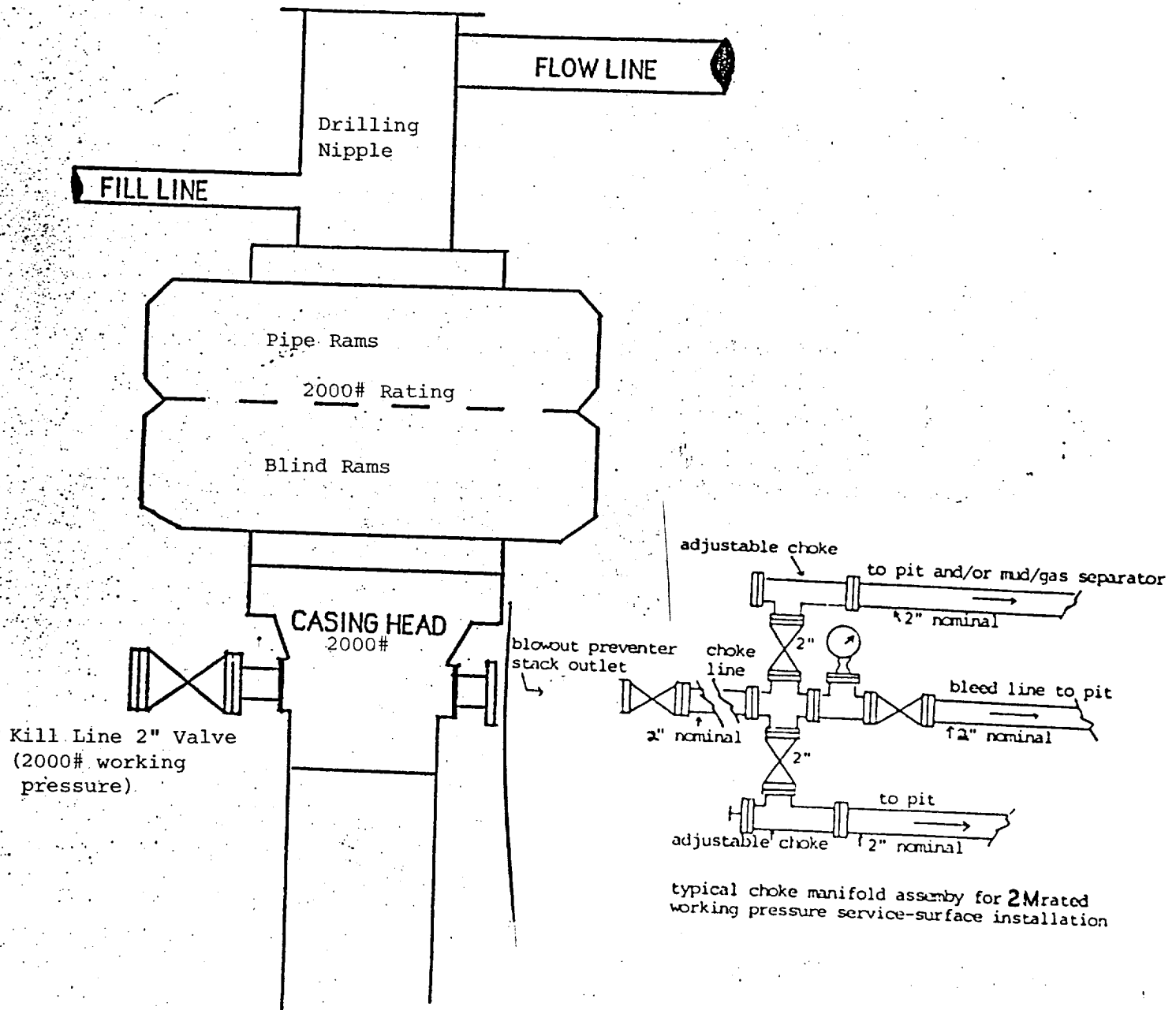
SURVEYOR CERTIFICATION

I hereby certify that the well location shown on this plat was plotted from field notes of actual surveys made by me or under my supervision, and that the same is true and correct to the best of my knowledge and belief.

Date Surveyed
12/28/90
Signature of Surveyor
Professional Surveyor
HERSCHEL L. JONES
8640
Certificate No. 8640



YATES PETROLEUM CORPORATION



**BLOWOUT PREVENTER
2M SYSTEM**