

Submit 3 Copies
to Appropriate
District Office

State of New Mexico
Energy, Minerals and Natural Resources Department

Form C-103
Revised 1-1-89

DISTRICT I
P.O. Box 1980, Hobbs, NM 88240

DISTRICT II
P.O. Drawer DD, Artesia, NM 88210

DISTRICT III
1000 Rio Brazos Rd., Aztec, NM 87410

OIL CONSERVATION DIVISION
P.O. Box 2088
Santa Fe, New Mexico 87504-2088

WELL API NO.
30-005-62829

5. Indicate Type of Lease
STATE ☒ FEE ☐

6. State Oil & Gas Lease No.
LG-5246

7. Lease Name or Unit Agreement Name
Pathfinder AFT State

8. Well No.
13

9. Pool name or Wildcat
SWD - Fusselman

10. Elevation (Show whether DF, RKB, RT, GR, etc.)
3855' GR

SUNDRY NOTICES AND REPORTS ON WELLS
(DO NOT USE THIS FORM FOR PROPOSALS TO DRILL OR TO DEEPEN OR PLUG BACK TO A
DIFFERENT RESERVOIR. USE APPLICATION FOR PERMIT (FORM C-101) FOR SUCH PROPOSALS.)

1. Type of Well:
OIL WELL ☐ GAS WELL ☐ OTHER SWD (SWD 15)

2. Name of Operator
YATES PETROLEUM CORPORATION

3. Address of Operator
105 South 4th St., Artesia, NM 88210

4. Well Location
Unit Letter F : 2310 Feet From The North Line and 1850 Feet From The West Line
Section 21 Township 10S Range 27E NMPM Chaves County

11. Check Appropriate Box to Indicate Nature of Notice, Report, or Other Data

NOTICE OF INTENTION TO:		SUBSEQUENT REPORT OF:	
PERFORM REMEDIAL WORK <input type="checkbox"/>	PLUG AND ABANDON <input type="checkbox"/>	REMEDIAL WORK <input type="checkbox"/>	ALTERING CASING <input type="checkbox"/>
TEMPORARILY ABANDON <input type="checkbox"/>	CHANGE PLANS <input type="checkbox"/>	COMMENCE DRILLING OPNS. <input type="checkbox"/>	PLUG AND ABANDONMENT <input type="checkbox"/>
PULL OR ALTER CASING <input type="checkbox"/>		CASING TEST AND CEMENT JOB <input type="checkbox"/>	
OTHER: <input type="checkbox"/>		OTHER: Repair well <input checked="" type="checkbox"/>	

12. Describe Proposed or Completed Operations (Clearly state all pertinent details, and give pertinent dates, including estimated date of starting any proposed work) SEE RULE 1103.

Mechanical Integrity Test failed. Repaired well as follows:

6-8-2000 - Moved in and rigged up pulling unit. Latched onto tubing. TOOH with tubing - had scale buildup and holes in tubing and collars. Shut well in.

6-12-2000 - Turn well to completion department for workover/repair.

6-15-2000 - Continued cleaning out scale from 1826-2120'. Felt top of fish at 1980' (tubing parted). Lost circulation for 10 minutes at 2050' - regained, but still losing slightly. Do not know if losing in perforations via tubing or possible hole in casing at that point. Continue to have heavy scale in casing. Circulate clean. POOH with wash pipe.

6-16-2000 - RIH with 5-3/4" overshot with 3-1/2" grapple and full open top sub. Engaged fish and pulled 20 points over weight. Had 8" stretch. Rigged up Rotary Wireline to run freepoint. Freepoint tool stopped at 2365'. Top of fish at 1983'. RIH with 1-7/8" chisel tool and sinker bars and worked to 2416'. Getting sticky. RIH with 2-5/8" jet cutter

I hereby certify that the information above is true and complete to the best of my knowledge and belief.

SIGNATURE Rusty Klein TITLE Operations Technician DATE Sept. 15, 2000

TYPE OR PRINT NAME Rusty Klein TELEPHONE NO. 505/748-1471

(This space for State Use)

APPROVED BY Mrs. Shellfield TITLE Field Rep. II DATE 9/21/2000

CONDITIONS OF APPROVAL, IF ANY:

YATES PETROLEUM CORPORATION
Pathfinder AFT State #13
Section 21-T10S-RR27E
Chaves County, New Mexico

SUNDRY NOTICE CONTINUED:

and cutter stopped at 195'. Will not pass through old tubing. POOH and laid down old tubing. Old tubing has scale built up on the pins. Some only have 2-1/8" ID. Picked up 42 joints of work string. RIH with 2-5/8" chemical cutter. Will not go past 2023'. Decided to run 2-1/8" jet cutter. Cut tubing at 2396'. Pulled up to 70K and came free. POOH. Recovered 1 joint below overshot. Tubing parted in upset area leaving a collar looking up. RIH with 5-3/4" overshot with 4-1/8" grapple to catch collar. Engaged fish. Plan is to back off at collar at 2416'. While tightening tubing - cut twisted off at 2396'. Rigged up wireline & TIH with CCL tool - confirmed depth. TOOH with logging tool. Rigged down wireline. POOH with 10 stands.

6-17-19-2000 - Continued POOH. Recovered 11 joints of 3-1/2" tubing. Scale did not seem as bad - but 7 out of the 11 joints had holes in them. TIH with 6-1/8" concave mill and dressed off 2' of fish. Top of fish at 2398'. POOH and shut down for night.

6-20-2000 - TIH with 5-3/4" full open overshot with 3-7/16" grapple. Picked up 30000# over weight. Fish parted. Had 16 points extra weight. POH & laid down 11-1/2 joints of fish. Left upset looking up. Joints that were laid down had numerous holes and heavy scale on outside. TIH with bit and tubing and tagged up at 2620'. Drilled scale down to top of fish at 2920'. POOH.

6-21-2000 - Corrected top of fish - 3020'. Washed over hard scale to 3198'. RIH with full open overshot and 3-3/4" grapple. Engaged fish. Pulled 50000# over weight and rotated 4 rounds in attempt to part fish. Will not part. Called for wireline. Shut down.

6-22-2000 - Rigged up Rotary Wireline. Hit bridge at 3296' with free point tool. POOH. RIH with 1-7/8" chisel with spud bars. Could not get through bridge. Cut 3-1/2" tubing at 3268' with chemical cutter - did not cut. Plastic coating allows tools to move up hole. Recut with jet cutter at 3270'. POOH with 8 joints of tubing. Collars are eaten up badly with holes in collars on most joints. RIH with 6-1/8" concave mill and dressed off 1' of fish. POOH. RIH with 5-3/4" overshot, bumper sub, jars and drill collars. Jarred on fish to attempt to part tubing. Fish parted. Gained 3-4 points. POOH with 2 stands. Dragging 10000# over weight for first 30'. Shut down for night.

6-23-2000 - POOH and recovered 3 joints. Have upset looking up. Top of fish at 3367'. Collars have bad erosion with holes in middle of collars. RIH with 5-3/4" washpipe. Washed over with shoe down to 3530'. At 3530', well went on strong vacuum. Kept moving washpipe to prevent getting stuck. POOH with washpipe. RIH with full open overshot with 3-3/4" grapple. Engaged fish & pulled 50000# over weight. Stretch figures stuck at 4500'. RIH with sandline and sinker bar to see if we can get through tubing. Stopped at approx. 3500'.

6-24-2000 - Rigged up Rotary Wireline. Could get down to 3480'. Rigged down wireline. Pulled on tubing to 110000# - fish parted. POOH and laid down 35 joints of 3-1/2" tubing. Tubing looks better but collars are still bad (holes in collars). Left collar looking up. TIH with 6-1/8" bit and collars. Tagged up at 5350'. Drilled scale down to 4022'. Shut down for night.

6-25-2000 - Continued drilling scale down to top of fish at 4470'. Had very heavy scale last 60'. POOH with bit. RIH with 5-3/4" washpipe to 1500'. Shut down for night.

6-26-2000 - Shut down.

6-27-2000 - Continue TIH with washpipe. Washed over 6 joints of fish down to 4642'. Top 2 joints were fairly solid. Last 4 joints went easy. Lost 280 bbls water while washing over. POOH with washpipe. TIH with full open overshot with 4-1/8" grapple to catch collar. Engaged fish. Rigged up Rotary Wireline. Ran freepoint tool to 5264'. Could not

YATES PETROLEUM CORPORATION
Pathfinder AFT State #13
Section 21-T10S-R27E
Chaves County, New Mexico

SUNDRY NOTICE CONTINUED:

get any deeper. Cut tubing at 5238'. POOH with 23 joints of 3-1/2" tubing. Still have holes in collars and scale is heavy.

6-28-2000 - TIH with 6-1/8" concave mill and tagged up at 4946'. Used mill to clean scale down to top of fish. Milled off 2' of fish. POOH. RIH with 5-3/4" overshot with 3-1/2" grapple, 4-3/4" bumper sub, 4-3/4" jars and drill collars. Engaged fish. Jarred 10 times at 50000# over weight. Fish began to move 1' every time jars hit. Continued jarring and dragging 40000 to 50000# over weight for 12 stands. POOH and laid down fishing tools and top joint of fish. Have 8 points of weight. Shut down.

6-29-2000 - Laid down 23 joints of 3-1/2" tubing fish. New top of fish at 5970'. TIH with 6-1/8" bit. Tagged up at 5342'. Drilled scale and fill down to top of fish at 5970'. Circulated clean. POOH and laid down bit. RIH with 5-3/4" washpipe to 1500'. Shut down for night.

6-30-2000 - TIH with 5-3/4" washpipe and washed over fish to 6142'. Top joint had a lot of fill. POOH. RIH with 5-3/4" overshot with 3-3/4" grapple to catch upset, jars and bumper sub. Engaged fish and jarred loose. POOH to fish. Feels like we have packer due to well swabbing for first 3 stands. Released overshot for fish. Shut down for night.

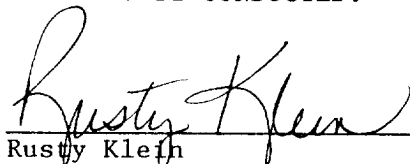
7-1-3-2000 - Laid down 13 joints of 3-1/2" tubing and top 1/2 of packer. Recovered spring housing and top slip. Mandrel broke in thread area. TIH with washpipe and cleaned off top of fish. Had 10' of fill. POOH. RIH with 5-7/8" short catch overshot with 2-7/8" grapple, bumper sub, jars and drill collars. Ran 10 stands of 3-1/2". Shut down.

7-4-5-2000 - Continued TIH and engaged fish (mandrel in rest of packer). Tripped jars 4 times and fish came loose and dragging. POOH - recovered all of packer. TIH with 6-1/8" bit and drilled scale from 6400-6642'. Ran out of water. Shut down for night.

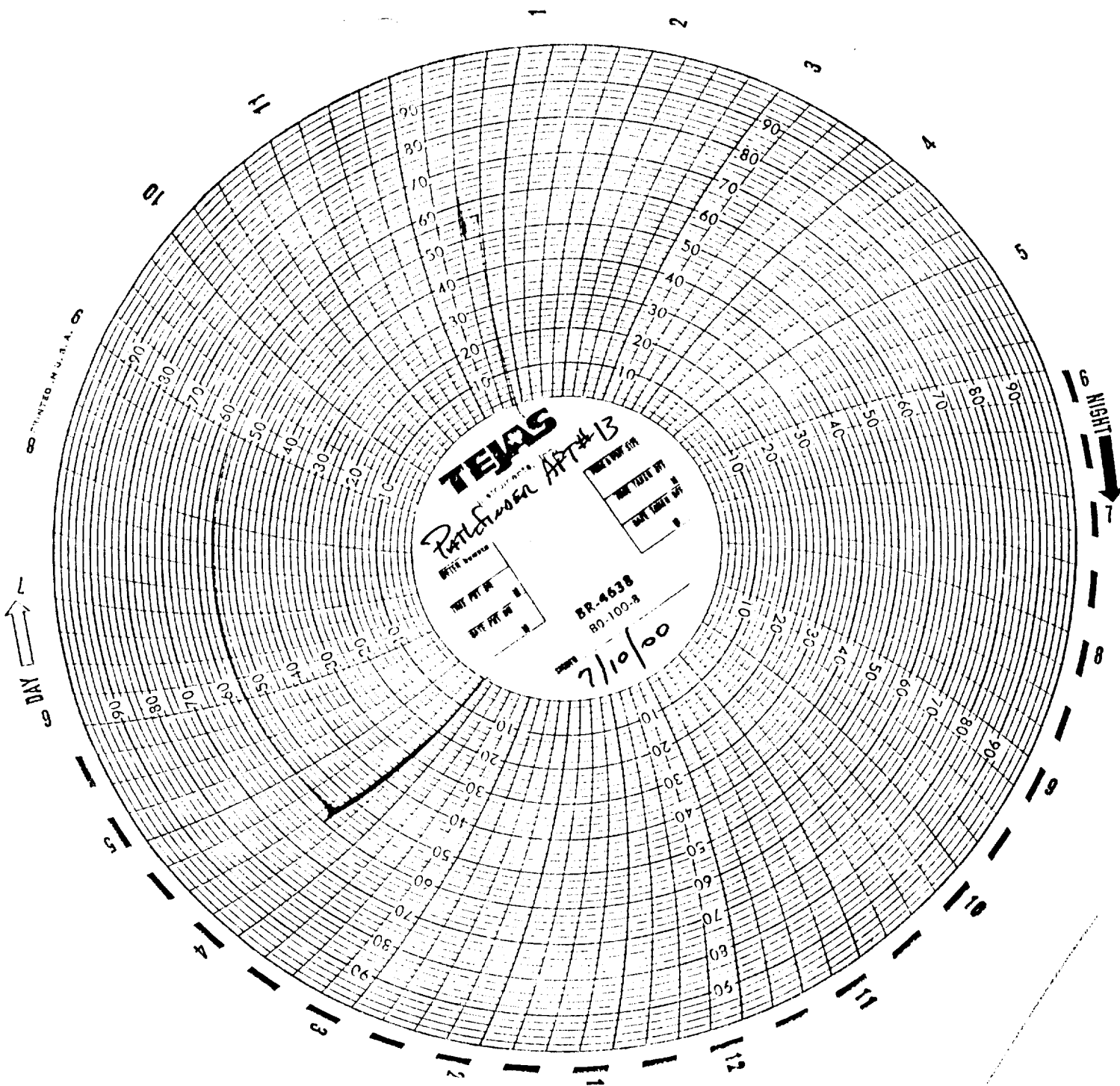
7-6-2000 - Continued cleaning out scale from 7" casing. Cleaned out from 6642-6722'. Circulate clean. POOH. TIH with packer and set packer at 6200'. Loaded annulus with 50 bbls fresh water and tested to 1000# for 15 minutes. Unset packer. Shut down for night. Laying down 3-1/2" work string and drill collars and washpipe. Started in hole with 2-7/8" plastic coated and nickle plated packer. Shut down for night.

7-8-2000 - Finished TIH with tubing and packer. Displaced annulus with packer fluid. Set packer at 6385' on 206 joints of 2-7/8" plastic coated tubing. Pressured annulus to 500 psi for 30 minutes, OK - recorded on chart. Released well to production department to return well to injection.

SEE ATTACHED CHART FOR MECHANICAL INTEGRITY TEST CONDUCTED.



Rusty Klein
Operations Technician
September 15, 2000



SEP 2000
RECEIVED
OCD - ARTESIA