

APPLICATION FOR PERMIT TO DRILL, DEEPEN, OR PLUG BACK

1a. TYPE OF WORK

DRILL ☒

DEEPEN ☐

PLUG BACK ☐

b. TYPE OF WELL

OIL
WELL ☐

GAS
WELL ☒

OTHER

SINGLE
ZONE ☐

MULTIPLE
ZONE ☐

2. NAME OF OPERATOR

Yates Petroleum Corporation ✓

3. ADDRESS OF OPERATOR

105 South Fourth Street, Artesia, NM 88210 748-1471

4. LOCATION OF WELL (Report location clearly and in accordance with any State requirements.)

At surface

Unit G, 1980'FNL and 1980'FEL

At proposed prod. zone

14. DISTANCE IN MILES AND DIRECTION FROM NEAREST TOWN OR POST OFFICE*

Approximately 23 miles northwest of Roswell, New Mexico

10. DISTANCE FROM PROPOSED*

LOCATION TO NEAREST
PROPERTY OR LEASE LINE, FT.
(Also to nearest drlg. unit line, if any)

1980'

16. NO. OF ACRES IN LEASE

18. DISTANCE FROM PROPOSED LOCATION*

TO NEAREST WELL, DRILLING, COMPLETED,
OR APPLIED FOR, ON THIS LEASE, FT.

19. PROPOSED DEPTH

3700'

17. NO. OF ACRES ASSIGNED
TO THIS WELL

160

20. ROTARY OR CABLE TOOLS

Rotary

21. ELEVATIONS (Show whether DF, RT, GR, etc.)

4283.5 GR

22. APPROX. DATE WORK WILL START*

ASAP

23.

PROPOSED CASING AND CEMENTING PROGRAM

SIZE OF HOLE	SIZE OF CASING	WEIGHT PER FOOT	SETTING DEPTH	QUANTITY OF CEMENT
12 3/4"	9 5/8"	43.5#	725'	750 sacks circulated
7 7/8"	4 1/2"	9.5#	TD	300 sacks

We propose to drill and test the Abo and intermediate formations. Approximately 725' of surface casing will be set and cement circulated to shut off gravel and cavings. If commercial, production casing will be run and cemented with adequate cover, perforated and stimulated as needed for production.

MUD PROGRAM: FW Gel/LCM to 725'; Brine to 2525'; Brine/KCL water to TD.

BOP PROGRAM: BOP's will be installed at the offset and tested daily for operational.

GAS NOT DEDICATED

IN ABOVE SPACE DESCRIBE PROPOSED PROGRAM: If proposal is to deepen or plug back, give data on present productive zone and proposed new productive zone. If proposal is to drill or deepen directionally, give pertinent data on subsurface locations and measured and true vertical depths. Give blowout preventer program, if any.

24.

SIGNED

Cliff R. May

TITLE

Permit Agent

(This space for Federal or State office use)

PERMIT NO.

APPROVAL DATE

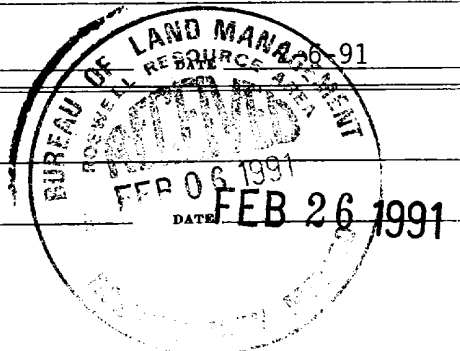
APPROVED BY

/s/ Sandra L. Porenta

TITLE

Area Manager

CONDITIONS OF APPROVAL, IF ANY:



*See Instructions On Reverse Side

Submit to Appropriate
District Office
State Lease - 4 copies
Fee Lease - 3 copies

State of New Mexico
Energy, Minerals and Natural Resources Department

Form C-102
Revised 1-1-89

OIL CONSERVATION DIVISION

P.O. Box 2088
Santa Fe, New Mexico 87504-2088

DISTRICT I
P.O. Box 1980, Hobbs, NM 88240

DISTRICT II
P.O. Drawer DD, Aztec, NM 88210

DISTRICT III
1000 Rio Pecos Rd., Aztec, NM 87410

WELL LOCATION AND ACREAGE DEDICATION PLAT

All Distances must be from the outer boundaries of the section

Operator YATES PETROLEUM CORPORATION			Lease SALT CREEK UNIT		Well No. 2
Unit Letter G	Section 1	Township 8 SOUTH	Range 21 EAST	County NMPM CHAVES	
Actual Footage Location of Well: 1980 feet from the NORTH line and 1980 feet from the EAST line					
Ground level Elev. 4283.5	Producing Formation Abo		Pool WEST PECCU SLOPE ABO		Dedicated Acreage: 160 Acres

1. Outline the acreage dedicated to the subject well by colored pencil or hatchure marks on the plat below.

2. If more than one lease is dedicated to the well, outline each and identify the ownership thereof (both as to working interest and royalty).

3. If more than one lease of different ownership is dedicated to the well, have the interest of all owners been consolidated by communitization, unitization, force-pooling, etc.?

☒ Yes

☐ No

If answer is "yes" type of consolidation **IS TO BE UNITIZATION**

If answer is "no" list the owners and tract descriptions which have actually been consolidated. (Use reverse side of this form if necessary.)

No allowable will be assigned to the well until all interests have been consolidated (by communitization, unitization, force-pooling, or otherwise) or until a non-standard unit, eliminating such interest, has been approved by the Division.

OPERATOR CERTIFICATION

I hereby certify that the information contained herein is true and complete to the best of my knowledge and belief.

Signature

Clifton R. May

Printed Name

Clifton R. May

Position

Permit Agent

Company

Yates Petroleum Corp.

Date

2-6-91

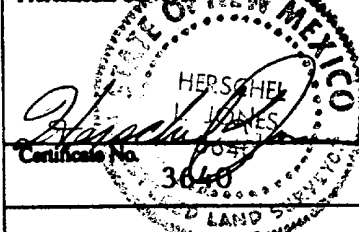
SURVEYOR CERTIFICATION

I hereby certify that the well location shown on this plat was plotted from field notes of actual surveys made by me or under my supervision, and that the same is true and correct to the best of my knowledge and belief.

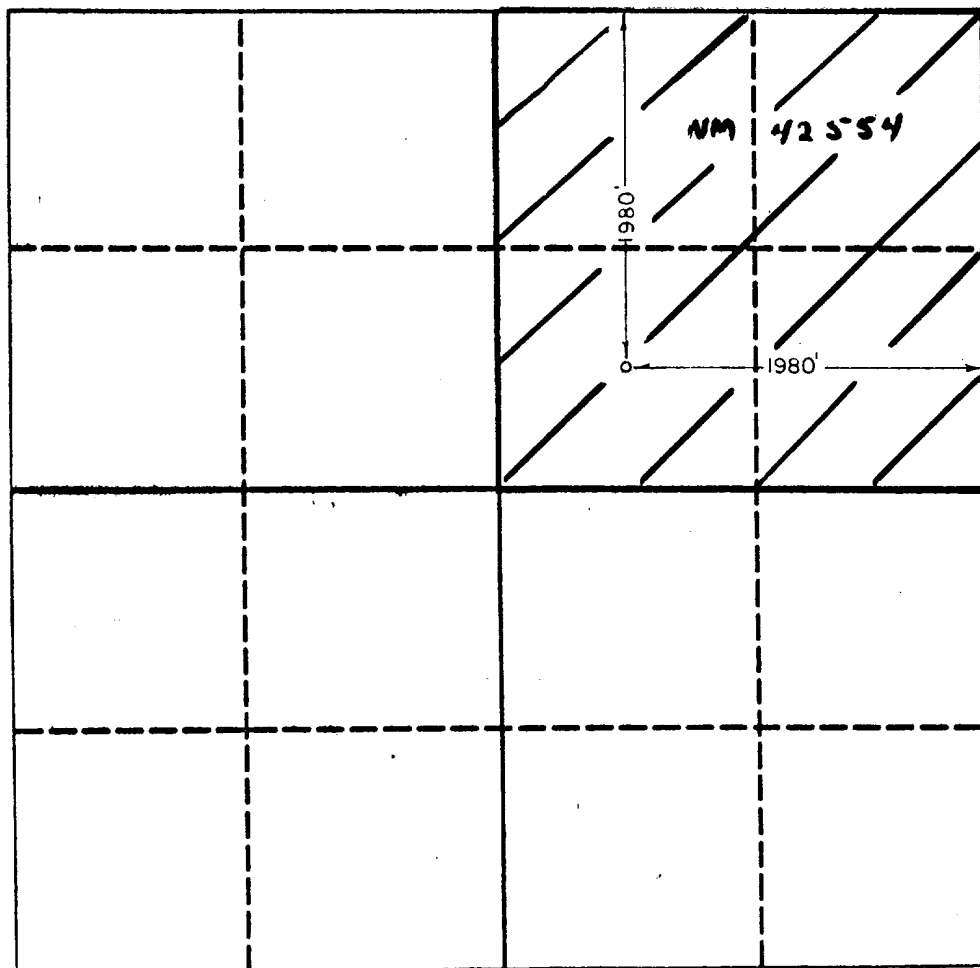
Date Surveyed

1/12/91

Signature & Seal of
Professional Surveyor



Certificate No.



YATES PETROLEUM CORPORATION

**Salt Creek Unit #2
1980' FNL and 1980' FEL
Section 1-T8S-R21E
Chaves County, New Mexico**

In conjunction with Form 3160-3, Application for Permit to Drill subject well, Yates Petroleum Corporation submits the following ten items of pertinent information in accordance with BLM requirements.

1. The geological surface formation is Sandy Alluvium:
2. The estimated tops of geologic markers are as follows:

Glorieta	671'
Tubb	1,874'
Abo	2,521'
Wolfcamp Penn	2,881'
Pre-Cambrian	3,556'
TD	3,700'
3. The estimated depths at which anticipated water, oil or gas formations are expected to be encountered:

Water:	250' - 300'
Oil or Gas:	2521'
4. Proposed Casing Program: See Form 3160-3.
5. Pressure Control Equipment: See Form 3160-3 and Exhibit B.
6. Mud Program: See Form 3160-3.
7. Auxiliary Equipment: Kelly Cock; pit level indicators and flow sensor equipment; sub with full-opening valve on floor, drill pipe connections.
8. Testing, Logging and Coring Program:

Samples: 10' samples from under surface casing to TD.

DST's: As warranted by drilling breaks and shows.

Coring: None anticipated.

Logging: CNL/FDC from TD to casing with GR-CNL to surface; DLL from TD to casing.
9. No abnormal pressures or temperatures are anticipated.
10. Anticipated starting date: As soon as possible after approval.

MULTI-POINT SURFACE USE AND OPERATIONS PLAN

Yates Petroleum Corporation

Salt Creek Unit #2

1980' FNL and 1980' FEL

Section 1-T8S-R21E

Chaves County, New Mexico

This plan is submitted with Form 3160-3, Application for Permit to Drill, covering the above described well. The purpose of this plan is to describe the location of the proposed well, the proposed construction activities and operations plan, the magnitude of the surface disturbance involved and the procedures to be followed in rehabilitating the surface after completion of the operations, so that a complete appraisal can be made of the environmental effect associated with the operations.

1. EXISTING ROADS:

Exhibit A is a portion of BLM map showing the well and roads in the vicinity of the proposed location. The proposed wellsite is located approximately 23 miles northwest of Roswell, New Mexico, and the access route to the location is indicated in red and green on Exhibit A.

DIRECTIONS:

Go out Highway 285 to Pinelodge Road (246). Turn west on 246 and go approximately 15 miles to caliche road with Sacra Ranch sign. Turn north (right) and follow road approximately 9 miles to location on right side of road. Little road if any will be needed.

2. PLANNED ACCESS ROAD

None needed.

3. LOCATION OF EXISTING WELL

- A. There is no drilling activity within a one-mile radius of the wellsite.
- B. Exhibit D shows existing wells within a one-mile radius of the proposed wellsite.

4. LOCATION OF EXISTING AND/OR PROPOSED FACILITIES

- A. There are no production facilities on this lease at the present time.
- B. In the event that the well is productive, the necessary production facilities will be installed on the drilling pad. If the well is productive oil, a gas or diesel self-contained unit will be used to provide the necessary power. No power will be required if the well is productive of gas.

5. LOCATION AND TYPE OF WATER SUPPLY:

- A. It is planned to drill the proposed well with a fresh water system. The water will be obtained from commercial sources and will be hauled to the location by truck over the existing and proposed roads shown in Exhibit A.

Salt Creek Unit #2
Page 2

6. SOURCE OF CONSTRUCTION MATERIALS:

None needed.

7. METHODS OF HANDLING WASTE DISPOSAL:

- A. Drill cuttings will be disposed of in the reserve pits.
- B. Drilling fluids will be allowed to evaporate in the reserve pits until the pits are dry.
- C. Water produced during operations will be collected in tanks until hauled to an approved disposal system, or separate disposal application will be submitted.
- D. Oil produced during operations will be stored in tanks until sold.
- E. Current laws and regulations pertaining to the disposal of human waste will be complied with.
- F. Trash, waste paper, garbage and junk will be buried in a separate trash pit and covered with a minimum of 24 inches of dirt. All waste material will be contained to prevent scattering by the wind.
- G. All trash and debris will be buried or removed from the wellsite within 30 days after finishing drilling and/or completion operations.

8. ANCILLARY FACILITIES:

- A. None required.

9. WELLSITE LAYOUT:

- A. Exhibit C shows the relative location and dimensions of the well pad, the reserve pits, the location of the drilling equipment, rig orientation and access road approach. A cross section of drill pad with approximate cuts, fills and pad orientation is shown on Exhibit E.
- B. The reserve pits will be plastic lined.
- C. A 400' x 400' area has been staked and flagged.

10. PLANS FOR RESTORATION

- A. After finishing drilling and/or completion operations, all equipment and other material not needed for further operations will be removed. The location will be cleaned of all trash and junk to leave the wellsite in as aesthetically pleasing a condition as possible.
- B. Unguarded pits, if any, containing fluids will be fenced until they have dried and been levelled.
- C. If the proposed well is non-productive, all rehabilitation and/or vegetation requirements of the BLM will be complied with and will be accomplished as expeditiously as possible. All pits will be filled level within 90 days after abandonment.

11. SURFACE OWNERSHIP: Federal administered by the BLM, Roswell, NM.

12. OTHER INFORMATION:

- A. Topography: Refer to the existing archaeological report for a description of the topography, flora, fauna, soil characteristics, dwellings, historical and cultural sites.
- B. The primary surface use is for grazing.

13. OPERATOR'S REPRESENTATIVE

A. Through A.P.D. Approval:

Clifton R. May, Permit Agent
Yates Petroleum Corporation
105 South Fourth Street
Artesia, New Mexico 88210
Phone (505) 748-1471

B. Through Drilling Operations,
Completions and Production:

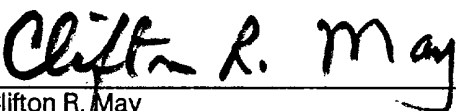
Mike Slater, Operations Manager
Yates Petroleum Corporation
105 South Fourth Street
Artesia, New Mexico 88210
Phone (505) 748-1471

14. CERTIFICATION:

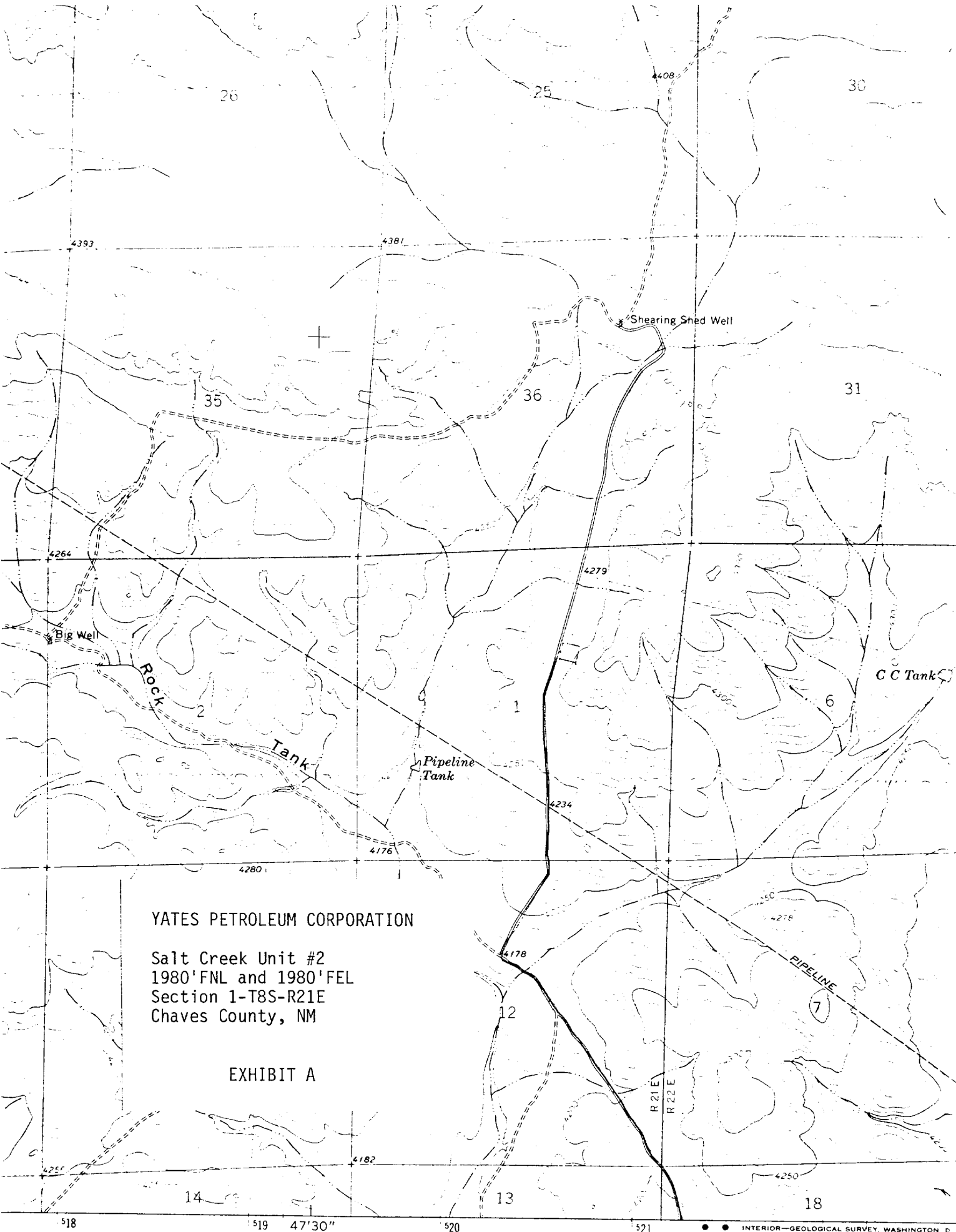
I hereby certify that I, or persons under my direct supervision, have inspected the proposed drillsite and access route, that I am familiar with the conditions which presently exist; that the statements made in this plan are to the best of my knowledge, true and correct; and, that the work associated with the operations proposed herein will be performed by Yates Petroleum Corporation and its contractors and subcontractors in conformity with this plan and the terms and conditions under which it is approved. This statement is subject to the provisions of 18 U.S.C. 1001 for the filing of a false statement.

2-6-91

Date



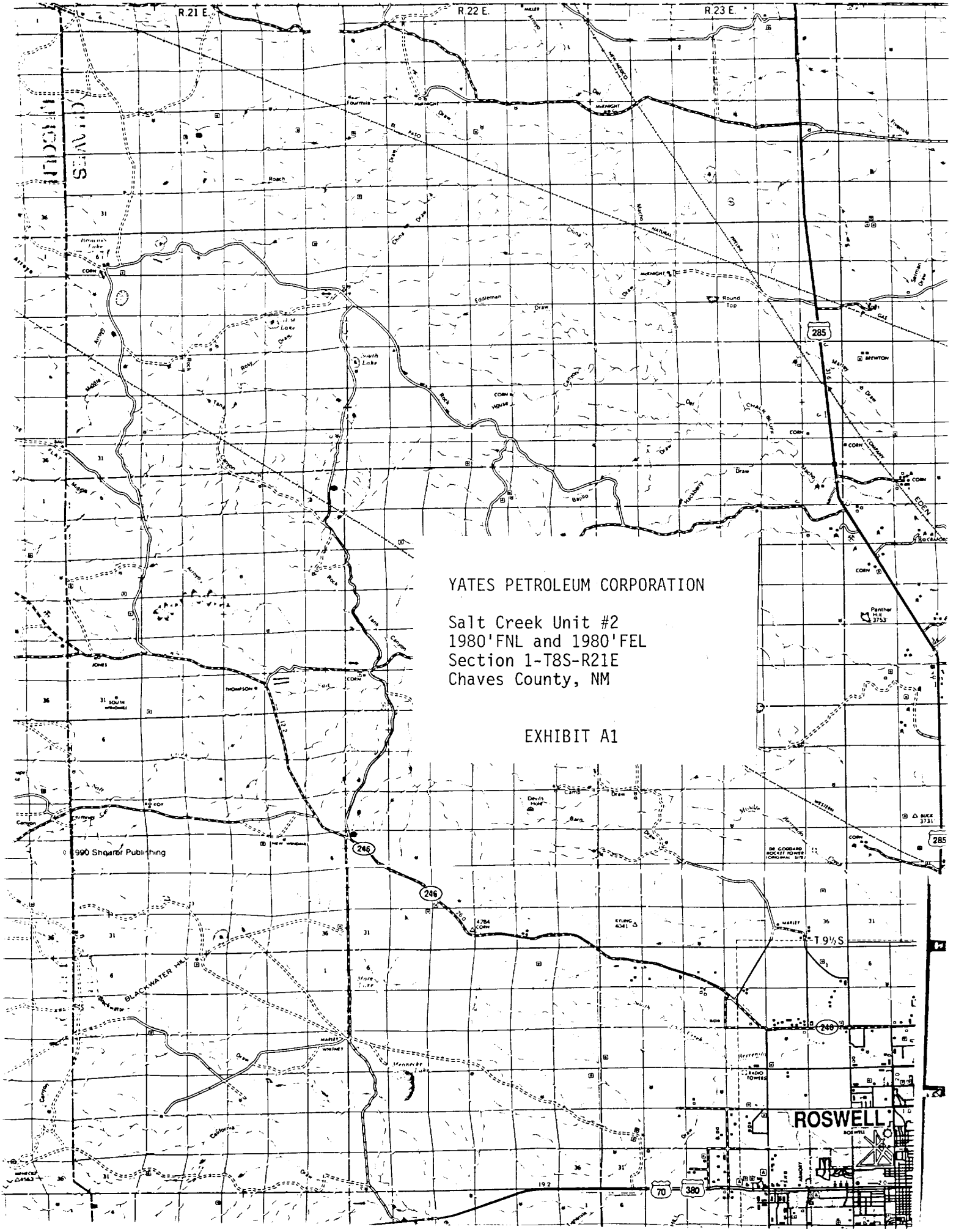
Clifton R. May
Permit Agent



YATES PETROLEUM CORPORATION

Salt Creek Unit #2
1980'FNL and 1980'FEL
Section 1-T8S-R21E
Chaves County, NM

EXHIBIT A



YATES PETROLEUM CORPORATION

Salt Creek Unit #2
1980'FNL and 1980'FEL
Section 1-T8S-R21E
Chaves County, NM

EXHIBIT A1

ROSWELL

YATES PETROLEUM CORPORATION

EXHIBIT B

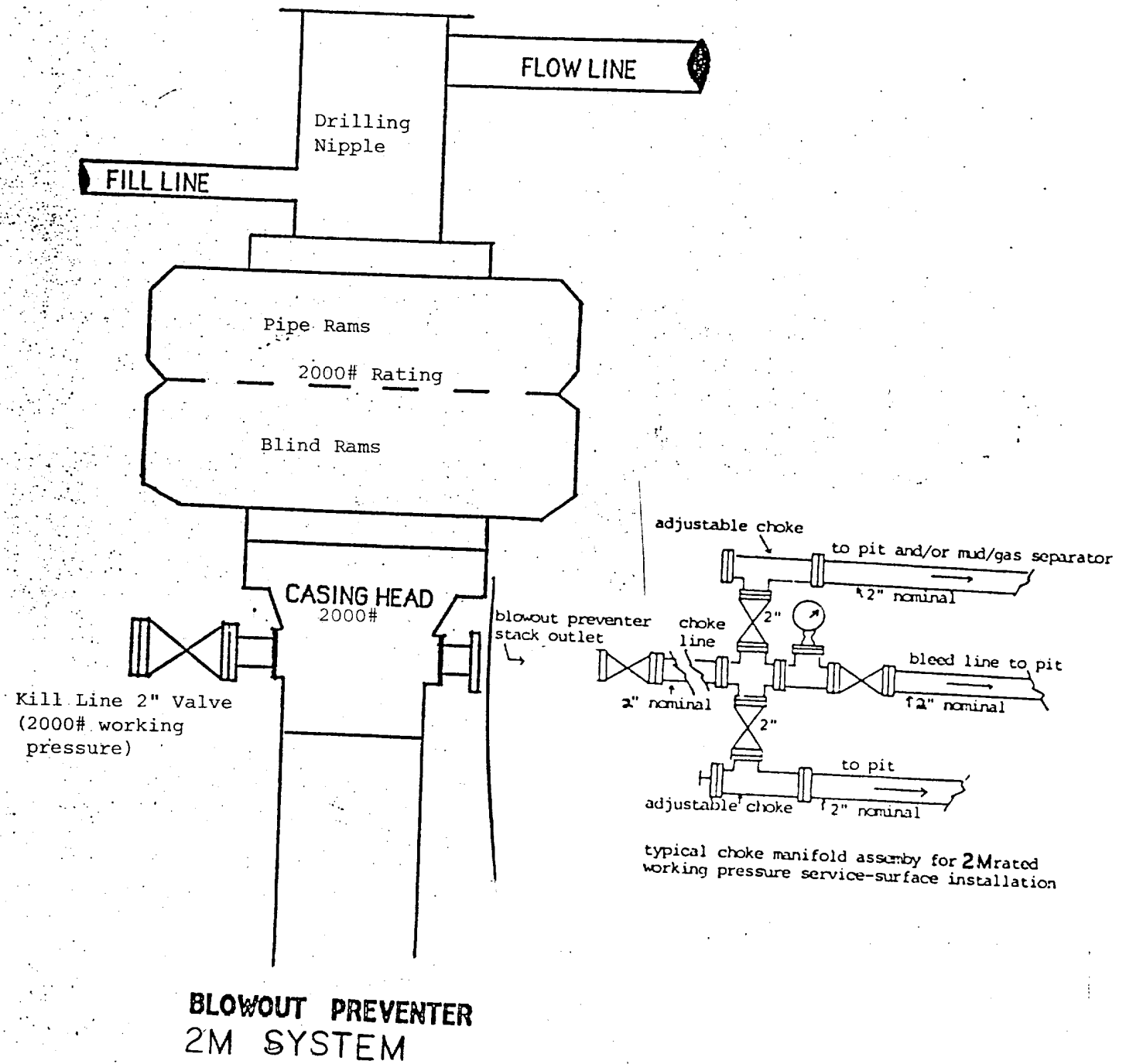
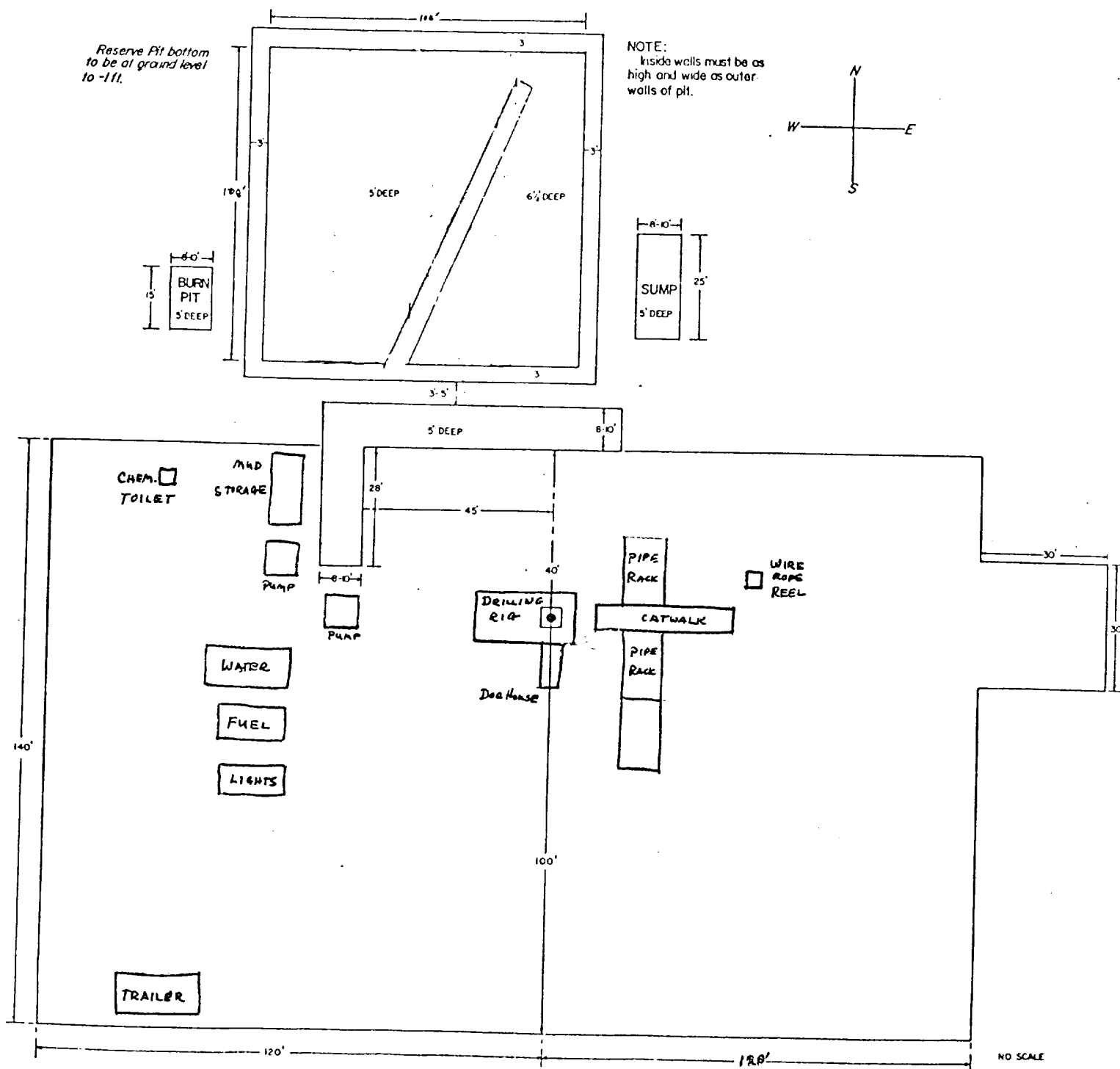
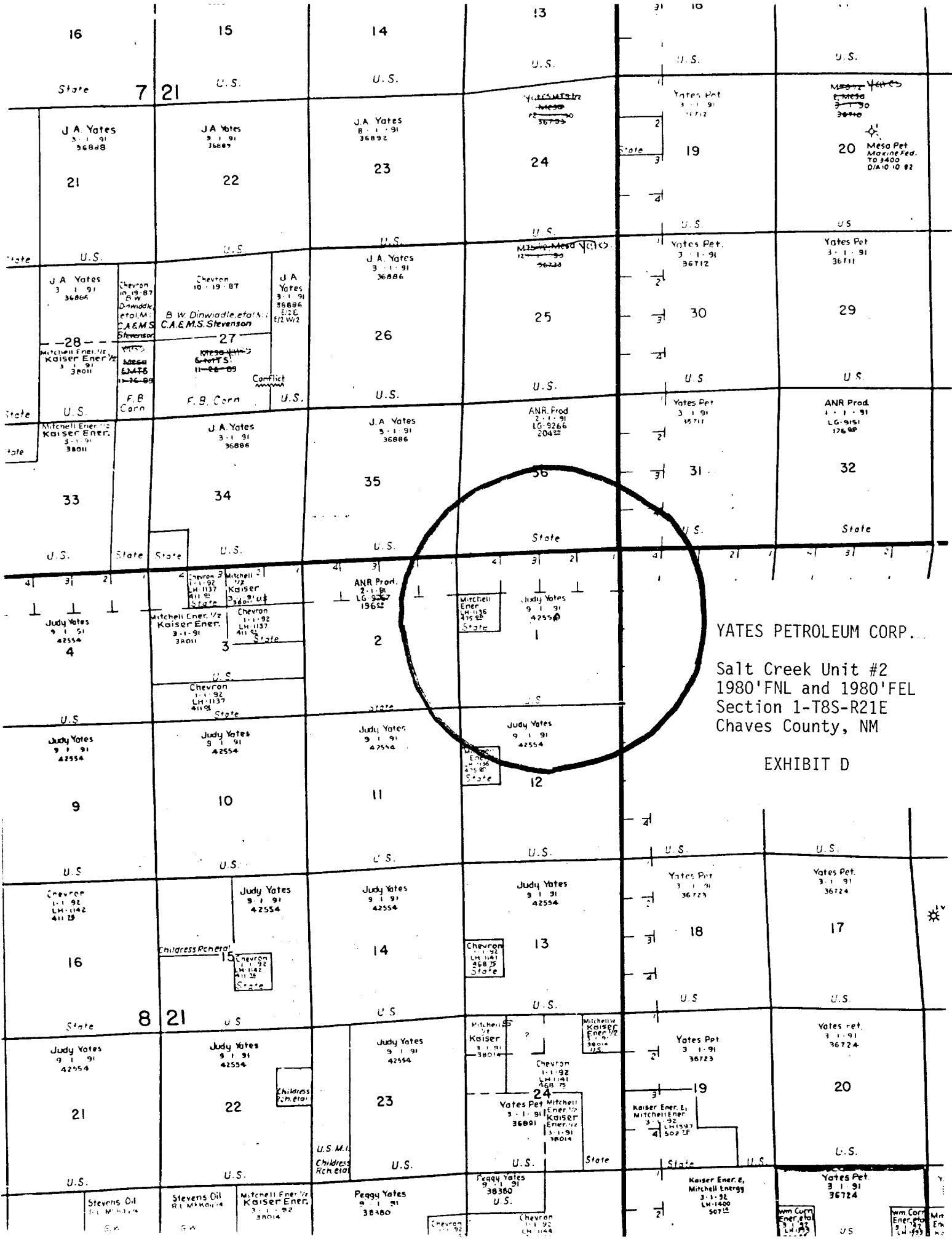


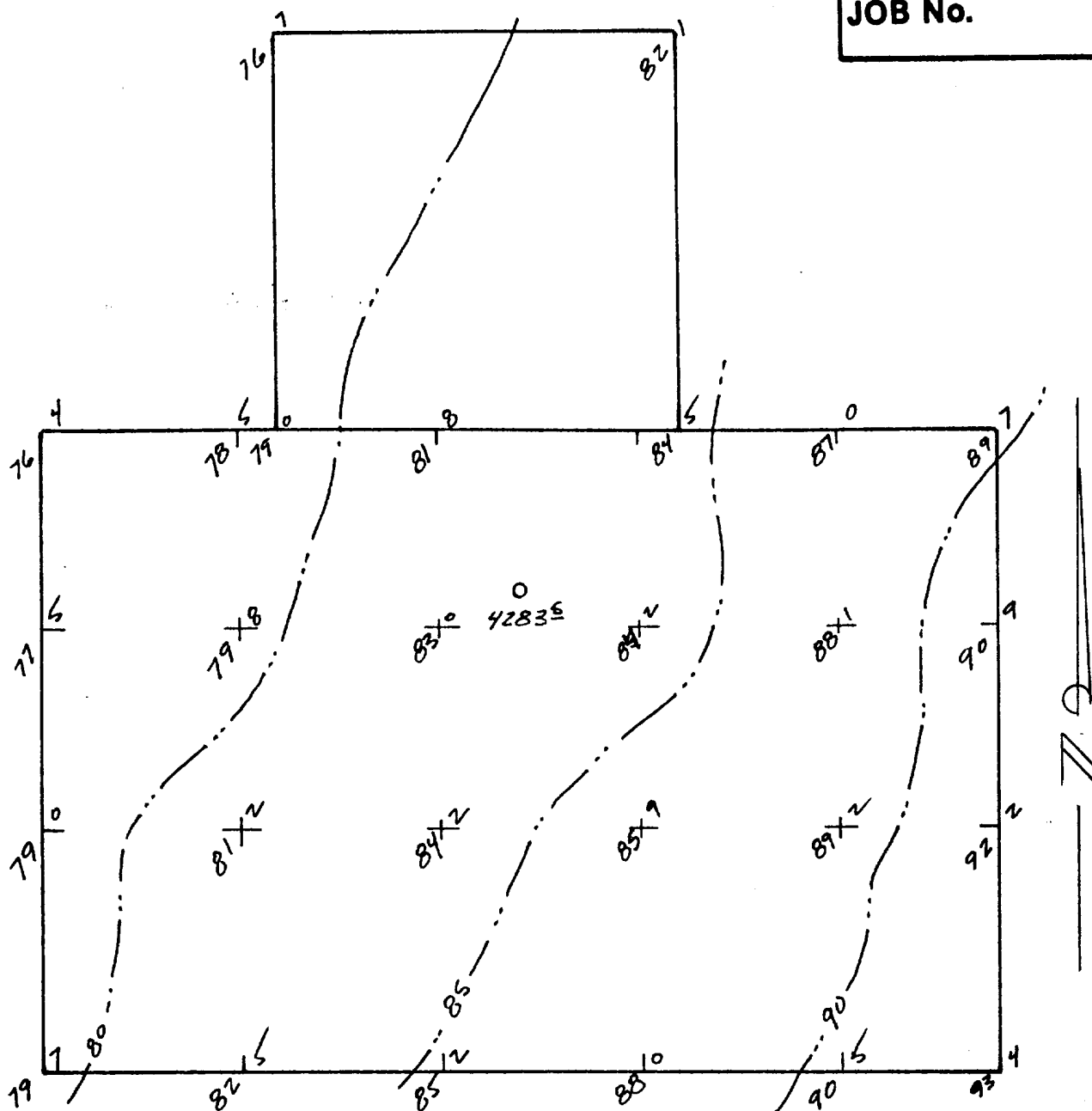
EXHIBIT C





YATES PETROLEUM CORP.
Salt Creek Unit #2
1980'FNL and 1980'FEL
Section 1-T8S-R21E
Chaves County, NM

EXHIBIT D



THE PREPARATION OF THIS PLAT AND THE PERFORMANCE OF THE SURVEY UPON WHICH IT IS BASED WERE DONE UNDER MY DIRECTION AND THE PLAT ACCURATELY DEPICTS THE RESULTS OF SAID SURVEY AND MEETS THE REQUIREMENTS OF THE STANDARDS FOR LAND SURVEYS IN NEW MEXICO AS ADOPTED BY THE NEW MEXICO STATE BOARD OF REGISTRATION FOR PROFESSIONAL ENGINEERS AND LAND SURVEYORS.


HERSCHEL L. JONES

Lovington, New Mexico 88260

SCALE: " = ' 1/4"	DRAWN BY: ERB
DATE:	SHEET OF