

Submit to Appropriate
District Office
State Lease - 6 copies
Fee Lease - 5 copies

State of New Mexico
Energy, Minerals and Natural Resources Department

Form C-101
Revised 1-1-89

C17
Bum
of

DISTRICT I
P.O. Box 1980, Hobbs, NM 88240

DISTRICT II
P.O. Drawer DD, Artesia, NM 88210

DISTRICT III
1000 Rio Brazos Rd., Aztec, NM 87410

OIL CONSERVATION DIVISION

P.O. Box 2088
Santa Fe, New Mexico 87504-2088

RECEIVED

JUL 20 1992

API NO. (assigned by OCD on New Wells)

30-015-62900

5. Indicate Type of Lease

STATE ☐ FEE ☒

6. State Oil & Gas Lease No.
N/A

7. Lease Name or Unit Agreement Name

Geneva UI

8. Well No.
3

9. Pool name or Wildcat
☒ Pecos Slope Abo

APPLICATION FOR PERMIT TO DRILL, DEEPEN, OR PLUG BACK

1a. Type of Work:

DRILL ☒ RE-ENTER ☐ DEEPEN ☐ PLUG BACK ☐

b. Type of Well:

OIL WELL ☐ GAS WELL ☒ OTHER ☐ SINGLE ZONE ☐ MULTIPLE ZONE ☐

2. Name of Operator
Yates Petroleum Corporation

3. Address of Operator
105 South Fourth Street, Artesia, NM 88210

4. Well Location
Unit Letter E : 1980 Feet From The North Line and 660 Feet From The West Line
Section 21 Township 6 South Range 25 East NMPM Chaves County

10. Proposed Depth
4150'

11. Formation
Abo

12. Rotary or C.T.
Rotary

13. Elevations (Show whether DF, RT, GR, etc.)
3856' GR

14. Kind & Status Plug Bond
Blanket

15. Drilling Contractor
Undesignated

16. Approx. Date Work will start
ASAP

17. PROPOSED CASING AND CEMENT PROGRAM

SIZE OF HOLE	SIZE OF CASING	WEIGHT PER FOOT	SETTING DEPTH	SACKS OF CEMENT	EST. TOP
17 1/2"	13 3/8"	545 #	650'	700 sx	Circulate
12 1/4"	8 5/8"	24# J-55	1500'	800 sx	Circulate
7 7/8"	4 1/2"	9.5# J-55	TD	350 sx	

Yates proposes to drill and test the Abo and intermediate formations. Approximately 650' of surface casing will be set and cement circulated. Approximately 1500' of intermediate casing will be set and cement circulated. If commercial, production casing will be run and cemented with adequate cover, perforated and stimulated as needed for production.

MUD PROGRAM: FW GEL/LCM to 1500', Cut Brine to 3200', Starch/Drispak to TD

BOP PROGRAM: BOP will be installed at the offset and tested daily for operational.

GAS NOT DEDICATED:

APPROVAL VALID FOR 180 DAYS
PERMIT EXPIRES 1/20/93
UNLESS DRILLING UNDERWAY

IN ABOVE SPACE DESCRIBE PROPOSED PROGRAM: IF PROPOSAL IS TO DEEPEN OR PLUG BACK, GIVE DATA ON PRESENT PRODUCTIVE ZONE AND PROPOSED NEW PRODUCTIVE ZONE. GIVE BLOWOUT PREVENTER PROGRAM, IF ANY.

I hereby certify that the information above is true and complete to the best of my knowledge and belief.

SIGNATURE Clifton R. May TITLE Permit Agent DATE 7/16/92

TYPE OR PRINT NAME Clifton R. May TELEPHONE NO. 748-1471

(This space for State Use)

ORIGINAL SIGNED BY
MIKE WILLIAMS
SUPERVISOR, DISTRICT II

APPROVED BY _____ TITLE _____ DATE JUL 20 1992

CONDITIONS OF APPROVAL, IF ANY:

Post ID-1
7-24-92
New Line & APE

Submit to Appropriate
District Office
State Lease - 4 copies
Fee Lease - 3 copies

State of New Mexico
Energy, Minerals and Natural Resources Department

Form C-102
Revised 1-1-89

OIL CONSERVATION DIVISION

DISTRICT I
P.O. Box 1980, Hobbs, NM 88240

P.O. Box 2088

Santa Fe, New Mexico 87504-2088

DISTRICT II
P.O. Drawer DD, Artesia, NM 88210

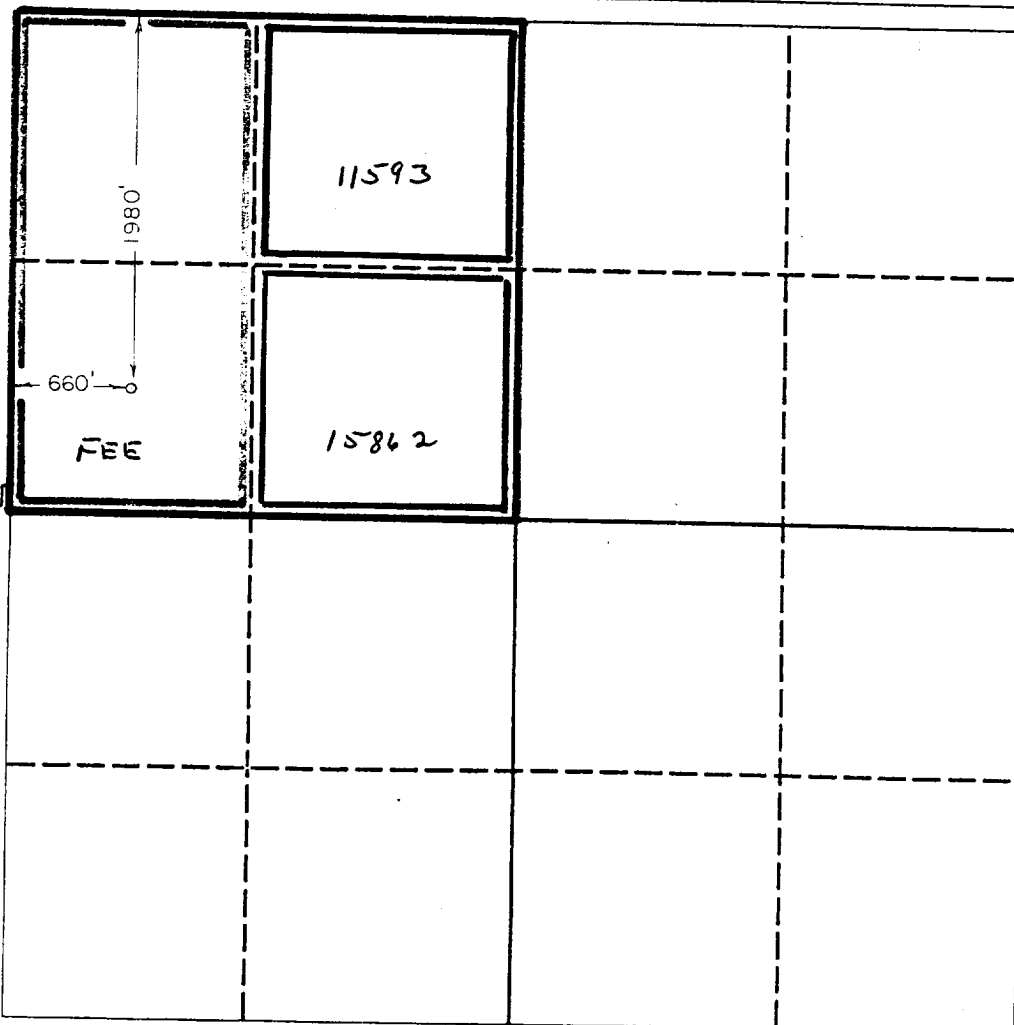
DISTRICT III
1000 Rio Brazos Rd., Aztec, NM 87410

WELL LOCATION AND ACREAGE DEDICATION PLAT

All Distances must be from the outer boundaries of the section

Operator YATES PETROLEUM CORPORATION			Lease GENEVA "UI" COM		Well No. 3
Unit Letter E	Section 21	Township 6 SOUTH	Range 25 EAST	County CHAVES	
Actual Footage Location of Well: 1980 feet from the NORTH line and 660 feet from the WEST line					
Ground level Elev. 3856	Producing Formation Abo		Pool PECOS SLOPE Abo	Dedicated Acreage: 160 Acres	

1. Outline the acreage dedicated to the subject well by colored pencil or hatchure marks on the plat below.
2. If more than one lease is dedicated to the well, outline each and identify the ownership thereof (both as to working interest and royalty).
3. If more than one lease of different ownership is dedicated to the well, have the interest of all owners been consolidated by communitization, unitization, force-pooling, etc.?
☐ Yes ☐ No If answer is "yes" type of consolidation _____
If answer is "no" list the owners and tract descriptions which have actually been consolidated. (Use reverse side of this form if necessary).
No allowable will be assigned to the well until all interests have been consolidated (by communitization, unitization, forced-pooling, or otherwise) or until a non-standard unit, eliminating such interest, has been approved by the Division.



OPERATOR CERTIFICATION

I hereby certify that the information contained herein is true and complete to the best of my knowledge and belief.

Signature *Clifton R. May*
Printed Name CLIFTON R. MAY
Position PERMIT AGENT
Company YATES PETROLEUM CORP.
Date 7-17-92

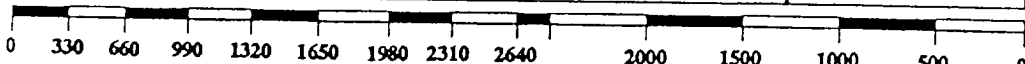
SURVEYOR CERTIFICATION

I hereby certify that the well location shown on this plat was plotted from field notes of actual surveys made by me or under my supervision, and that the same is true and correct to the best of my knowledge and belief.

Date Surveyed
6/30/92

Signature & Seal of
Professional Surveyor

Herschel K. Jones
Certificate No. 3640
REGISTERED LAND SURVEYOR
STATE OF NEW MEXICO



YATES PETROLEUM CORPORATION

