

UNITED STATES  
DEPARTMENT OF THE INTERIOR  
BUREAU OF LAND MANAGEMENT

APPLICATION FOR PERMIT TO DRILL, DEEPEN, OR PLUG BACK

1a. TYPE OF WORK

DRILL ☒

DEEPEN ☐

PLUG BACK ☐

b. TYPE OF WELL

OIL WELL ☒

GAS WELL ☐

OTHER ☐

SINGLE ZONE ☒

MULTIPLE ZONE ☐

2. NAME OF OPERATOR

Topat Oil Corporation

3a. Area Code & Phone No.

(915) 682-6340

3. ADDRESS OF OPERATOR

505 N. Big Spring - Ste. 204 - Midland, TX 79701

4. LOCATION OF WELL (Report location clearly and in accordance with any State requirements.)

At surface

1980 FSL, 1980 FWL

At proposed prod. zone

Same

14. DISTANCE IN MILES AND DIRECTION FROM NEAREST TOWN OR POST OFFICE

15 Miles East of Roswell, New Mexico

15. DISTANCE FROM PROPOSED\*

LOCATION TO NEAREST  
PROPERTY OR LEASE LINE, FT.  
(Also to nearest drlg. unit line, if any)

660' 1st line

18. DISTANCE FROM PROPOSED LOCATION\*

TO NEAREST WELL, DRILLING, COMPLETED,  
OR APPLIED FOR, ON THIS LEASE, FT.

none

16. NO. OF ACRES IN LEASE

691.15 Acres

19. PROPOSED DEPTH

900

17. NO. OF ACRES ASSIGNED  
TO THIS WELL

40

20. ROTARY OR CABLE TOOLS

To Be Determined. \*

21. ELEVATIONS (Show whether DF, RT, GR, etc.)

3689 GL

22. APPROX. DATE WORK WILL START\*

23.

PROPOSED CASING AND CEMENTING PROGRAM

| HOLE SIZE | CASING SIZE | WEIGHT/FOOT | GRADE | THREAD TYPE | SETTING DEPTH | QUANTITY OF CEMENT               |
|-----------|-------------|-------------|-------|-------------|---------------|----------------------------------|
| 7-7/8"    | 5-1/2"      | 15.5        | J-55  | ST & C      | 900           | 250 sx C1 "C"                    |
| 12 1/4"   | 8 5/8"      | 24          | .     | .           | 200'          | (110% xcess)<br>Cmt. to surface. |

- 1) Stake location, perform archeological survey and BLM approval on location and access to same, dig pits and outlined in attached drilling plan.
- 2) Move in cable tool or rotary - according to attached drilling plan.
- 3) Drill to 900', set 900' 5-1/2" 15.5\* J-55 casing and cement to surface using 250 sx C1 C (110% xcess)
- 4) Log well with GRN and perforate Queen formation as determined by geologist.
- 5) Acidize well with 750 gls. 15% HFE HCL, frac with 45,000# sand, 24,000 gls. gelled KCL.
- 6) Put well on production.

IN ABOVE SPACE DESCRIBE PROPOSED PROGRAM: If proposal is to deepen or plug back, give data on present productive zone and proposed new productive zone. If proposal is to drill or deepen directionally, give pertinent data on subsurface locations and measured and true vertical depths. Give blowout preventer program, if any.

24.

SIGNED

TITLE President

DATE 6-10-92

(This space for Federal or State office use)

PERMIT NO.

APPROVAL DATE

APPROVED BY

TITLE Area Manager

DATE 8/4/92

CONDITIONS OF APPROVAL, IF ANY:

\* Have included pit diagram on both rotary air rig and cable tool rig.

\*See Instructions On Reverse Side

Submit to Appropriate  
District Office  
State Lease - 4 copies  
Fee Lease - 3 copies

State of New Mexico  
Energy, Minerals and Natural Resources Department

Form C-102  
Revised 1-1-89

OIL CONSERVATION DIVISION

P.O. Box 2088  
Santa Fe, New Mexico 87504-2088

DISTRICT I  
P.O. Box 1980, Hobbs, NM 88240

DISTRICT II  
P.O. Drawer DD, Artesia, NM 88210

DISTRICT III  
1000 Rio Brazos Rd., Aztec, NM 87410

WELL LOCATION AND ACREAGE DEDICATION PLAT

All Distances must be from the outer boundaries of the section

|                                   |                     |                              |                         |                    |
|-----------------------------------|---------------------|------------------------------|-------------------------|--------------------|
| Operator<br>Topat Oil Corp.       |                     | Lease<br>Patricia Federal    |                         | Well No.<br>1      |
| Unit Letter<br>K                  | Section<br>20       | Township<br>11- S            | Range<br>27 - E<br>NMPM | County<br>Chaves   |
| Actual Footage Location of Well:  |                     |                              |                         |                    |
| 1980 feet from the South line and |                     | 1980 feet from the West line |                         | Dedicated Acreage: |
| Ground level Elev.<br>3689        | Producing Formation | Pool                         | 40 Acres                |                    |

1. Outline the acreage dedicated to the subject well by colored pencil or hatchure marks on the plat below.

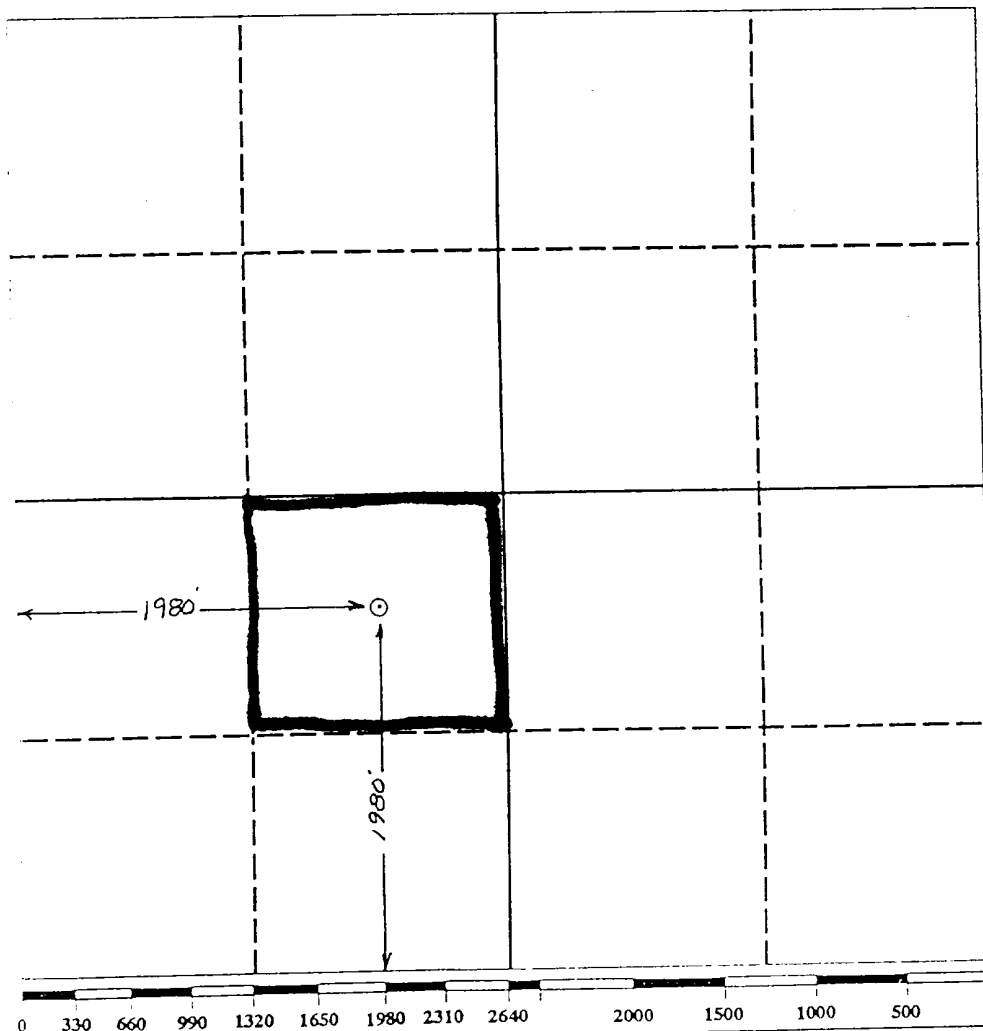
2. If more than one lease is dedicated to the well, outline each and identify the ownership thereof (both as to working interest and royalty).

3. If more than one lease of different ownership is dedicated to the well, have the interest of all owners been consolidated by communitization, unitization, force-pooling, etc.?

☐ Yes ☐ No If answer is "yes" type of consolidation

If answer is "no" list the owners and tract descriptions which have actually been consolidated. (Use reverse side of this form if necessary.)

No allowable will be assigned to the well until all interests have been consolidated (by communitization, unitization, forced-pooling, or otherwise) or until a non-standard unit, eliminating such interest, has been approved by the Division.



OPERATOR CERTIFICATION

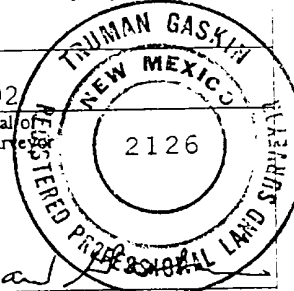
I hereby certify that the information contained herein is true and complete to the best of my knowledge and belief.

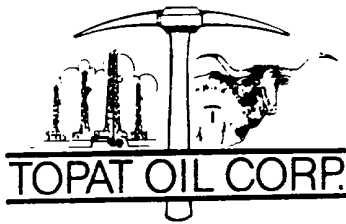
Signature  
Printed Name  
Position  
Company  
Date  
6/22/92

SURVEYOR CERTIFICATION

I hereby certify that the well location shown on this plat was plotted from field notes of actual surveys made by me or under my supervision, and that the same is true and correct to the best of my knowledge and belief.

Date Surveyed  
5/13/92  
Signature & Seal of Professional Surveyor  
Certificate No.  
2126





505 NORTH BIG SPRING STREET  
SUITE 204 ENERGY SQUARE  
MIDLAND, TEXAS 79701-8602  
(915) 682-6340

SUPPLEMENT DATA  
APPLICATION FOR PERMIT TO DRILL, DEEPEN, OR PLUG BACK

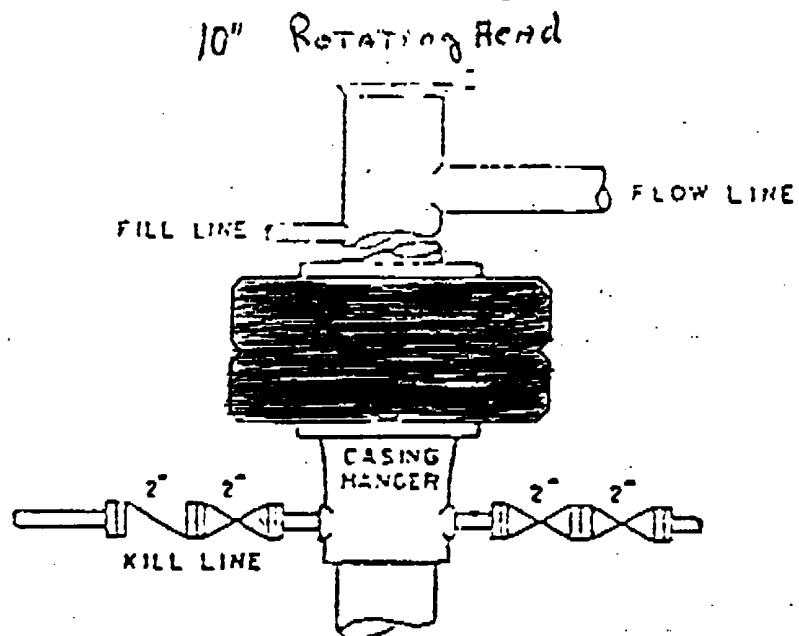
Patricia Federal # 1  
Coyote Queen  
Sec 20, T 11 S, R 27 E  
Chaves County, New Mexico

Geological Tops:

|            |       |       |
|------------|-------|-------|
| Yates      | 100'  | (+ -) |
| Queen      | 600'  | (+ -) |
| San Andres | 1150' | (+ -) |

Surface Casing: 200' of 8-5/8" surface casing will be  
set and cement circulated.

Thomas Schneider  
Operator Representative



10" ROTATING HEAD

