

Submit to Appropriate
District Office
State Lease - 6 copies
Fee Lease - 5 copies

State of New Mexico
Energy, Minerals and Natural Resources Department

Form C-101
Revised 1-1-89

OIL CONSERVATION DIVISION

P.O. Box 2088
Santa Fe, New Mexico 87504-2088

DISTRICT I
P.O. Box 1980, Hobbs, NM 88240

DISTRICT II
P.O. Drawer DD, Artesia, NM 88210

DISTRICT III
1000 Rio Brazos Rd., Aztec, NM 87410

RECEIVED
AUG 10 1993

API NO. (assigned by OCD on New Wells)

30-005-62980

5. Indicate Type of Lease

STATE ☒ FEE ☐

6. State Oil & Gas Lease No.

VA 0831-1

APPLICATION FOR PERMIT TO DRILL, DEEPEN, OR PLUG BACK

1a. Type of Work:

DRILL ☒

RE-ENTER ☐

DEEPEN ☐

PLUG BACK ☐

b. Type of Well:

OIL
WELL ☒

GAS
WELL ☐

OTHER ☐

SINGLE
ZONE ☐

MULTIPLE
ZONE ☐

7. Lease Name or Unit Agreement Name

Charlie State

2. Name of Operator

Hanagan Petroleum Corporation

8. Well No.

1

3. Address of Operator

P.O. Box 1737-Roswell, NM 88202

9. Pool name or Wildcat

Wildcat / DEVONIAN

4. Well Location

Unit Letter

G

: 1910

Feet From The

North

Line and

2015

Feet From The

East

Line

Section 7

Township

13 South

Range

28 East

NMPM

Chaves

County

10. Proposed Depth

8100'

11. Formation

Devonian

12. Rotary or C.T.

Rotary

13. Elevations (Show whether DF, RT, GR, etc.)

3646 GR

14. Kind & Status Plug. Bond

Blanket

15. Drilling Contractor

Peterson

16. Approx. Date Work will start

8/93 - Immed.

17.

PROPOSED CASING AND CEMENT PROGRAM

SIZE OF HOLE	SIZE OF CASING	WEIGHT PER FOOT	SETTING DEPTH	SACKS OF CEMENT	EST. TOP
12 1/4"	8 5/8"	24#	1550	1300	Circ.
7 7/8"	5 1/2"	15.50 & 17#	8100	as necessary	
17 1/2"	13 3/8"	48 #	300	400	CIRC.

1. Set ^{300'} 1 joint 13 3/8" conductor pipe. WOC ^{12'} 8' - pressure test to 600 # / 30"
2. Drill 12 1/4" hole 30' into San Andres @ approx. 1520-1550'.
3. Run 8 5/8" 24# K-55 casing to TD. Cement w/approx. 1150 sx. lite cement, tail in w/250 sx. Class "C". Cement will be circulated. WOC as per option 1 or 2 of regs.
4. Nipple up 3000# WP BOPE. Pressure test casing to 1500# max. for 30".
5. Drill 7 7/8" hole to TD of approx. 8100'.
6. Run 5 1/2" 15.50/17# production casing as needed or plug & abandon as per OCD instructions.

10-1
8-13-93
4-7-93

IN ABOVE SPACE DESCRIBE PROPOSED PROGRAM: IF PROPOSAL IS TO DEEPEN OR PLUG BACK, GIVE DATA ON PRESENT PRODUCTIVE ZONE AND PROPOSED NEW PRODUCTIVE ZONE. GIVE BLOWOUT PREVENTER PROGRAM IF ANY.

I hereby certify that the information above is true and complete to the best of my knowledge and belief.

SIGNATURE

Michael G. Hanagan

TITLE

Vice Pres.

DATE

8/10/93

TYPE OR PRINT NAME

Michael G. Hanagan

TELEPHONE NO. 623-5053

(This space for State Use)

ORIGINAL SIGNED BY
MIKE WILLIAMS
SUPERVISOR, DISTRICT II

APPROVED BY

TITLE

DATE

AUG 16 1993

CONDITIONS OF APPROVAL, IF ANY:

VALID FOR 180 DAYS
EXPIRES 2-12-94
UNLESS DRILLING UNDERWAY

Submit to Appropriate
District Office
State Lease - 4 copies
Fee Lease - 3 copies

State of New Mexico
Energy, Minerals and Natural Resources Department

Form C-102
Revised 1-1-89

OIL CONSERVATION DIVISION

P.O. Box 2088
Santa Fe, New Mexico 87504-2088

DISTRICT I

P.O. Box 1980, Hobbs, NM 88240

DISTRICT II

P.O. Drawer DD, Artesia, NM 88210

DISTRICT III

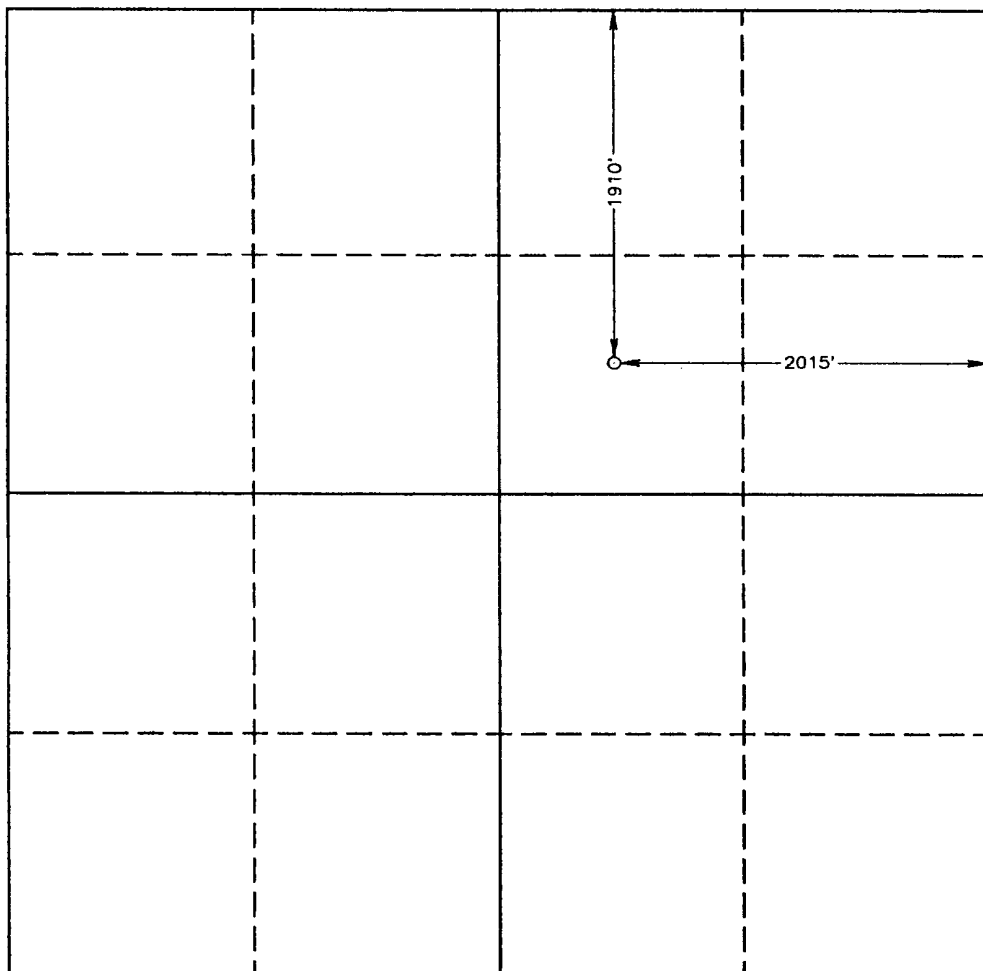
1000 Rio Brazos Rd., Artec, NM 87410

WELL LOCATION AND ACREAGE DEDICATION PLAT

All Distances must be from the outer boundaries of the section

Operator HANAGAN PETROLEUM CORP.		Lease CHARLIE STATE		Well No. 1
Unit Letter G	Section 7	Township 13 SOUTH	Range 28 EAST NMPM	County CHAVES
Actual Footage Location of Well: 1910 feet from the NORTH line and 2015 feet from the EAST line				
Ground Level Elev. 3646.2'	Producing Formation N/A	Pool WILDCAT	Dedicated Acreage: 40 Acres	

- Outline the acreage dedicated to the subject well by colored pencil or hachure marks on the plat below.
- If more than one lease is dedicated to the well, outline each and identify the ownership thereof (both as to working interest and royalty).
- If more than one lease of different ownership is dedicated to the well, have the interest of all owners been consolidated by communitization, unitization, force-pooling, etc.?
☐ Yes ☐ No If answer is "yes" type of consolidation _____
If answer is "no" list of owners and tract descriptions which have actually been consolidated. (Use reverse side of this form necessary.)
No allowable will be assigned to the well unit all interests have been consolidated (by communitization, unitization, forced-pooling, otherwise) or until a non-standard unit, eliminating such interest, has been approved by the Division.



OPERATOR CERTIFICATION

I hereby certify the the information
contained herein is true and complete to the
best of my knowledge and belief.

Signature
Michael G. Hanagan
Printed Name
MICHAEL G. HANAGAN
Position
VICE PRESIDENT
Company
HANAGAN Petroleum Corp.
Date
8/10/93

SURVEYOR CERTIFICATION

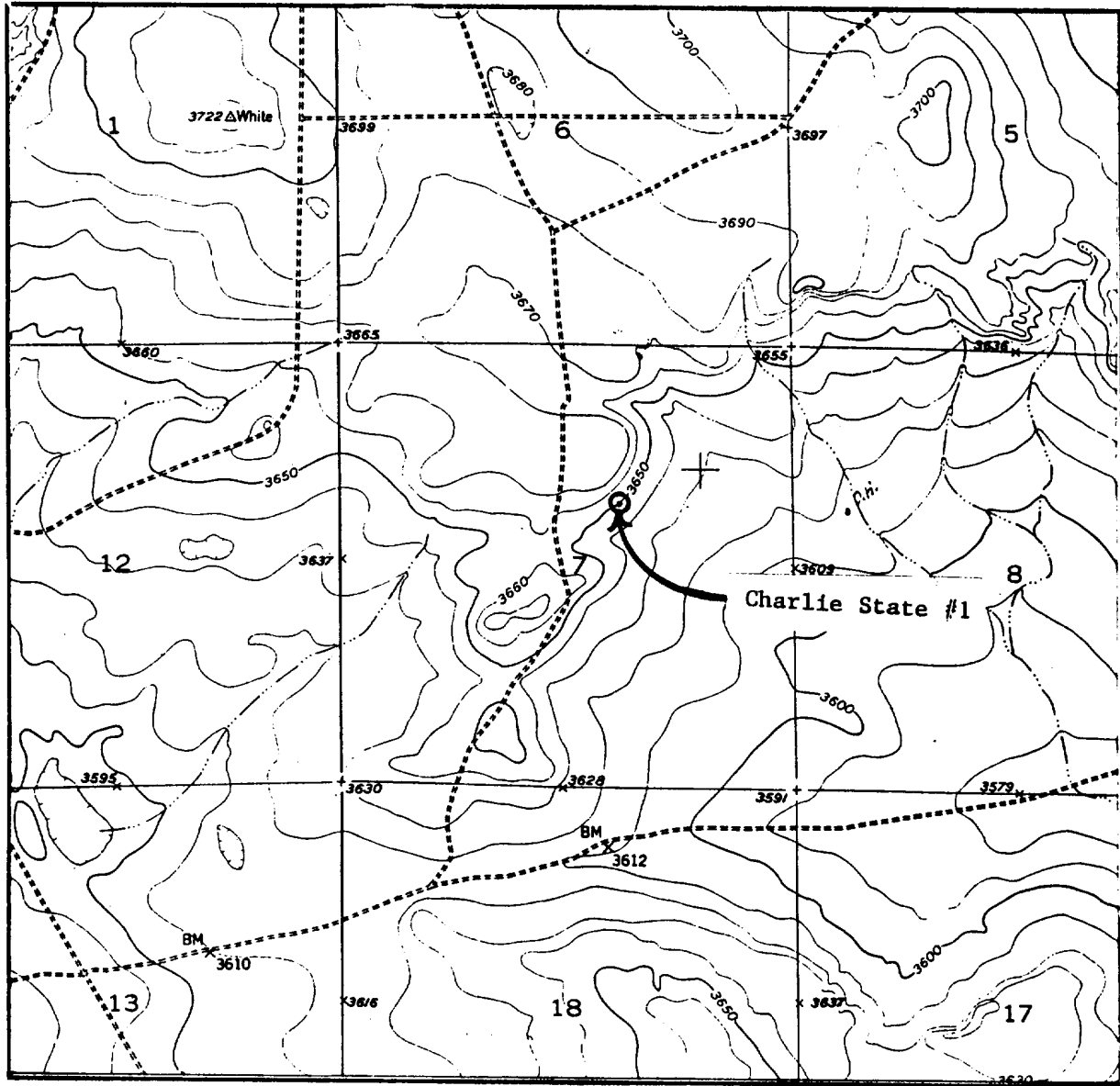
I hereby certify that the well location shown
on this plat was plotted from field notes of
actual surveys made by me or under my
supervision, and that the same is true and
correct to the best of my knowledge and
belief.

Date Surveyed
AUGUST 7, 1993

Signature & Seal of
Professional Surveyor

Donald J. Elson
Certificate No. **1235**
JOHN W. WEST, 876
DONALD J. ELSON, 3239
MELODY L. BROWN, 7977
93-40-1-48

LOCATION VERIFICATION MAP



SCALE: 1" = 2000'

CONTOUR INTERVAL 10'

SEC. 7 TWP. 13S RGE. 28E

SURVEY N.M.P.M.

COUNTY Chaves STATE NM

DESCRIPTION 1910' FNL & 2015' FEL

ELEVATION 3646.2'

OPERATOR Hanagan Petroleum Corp.

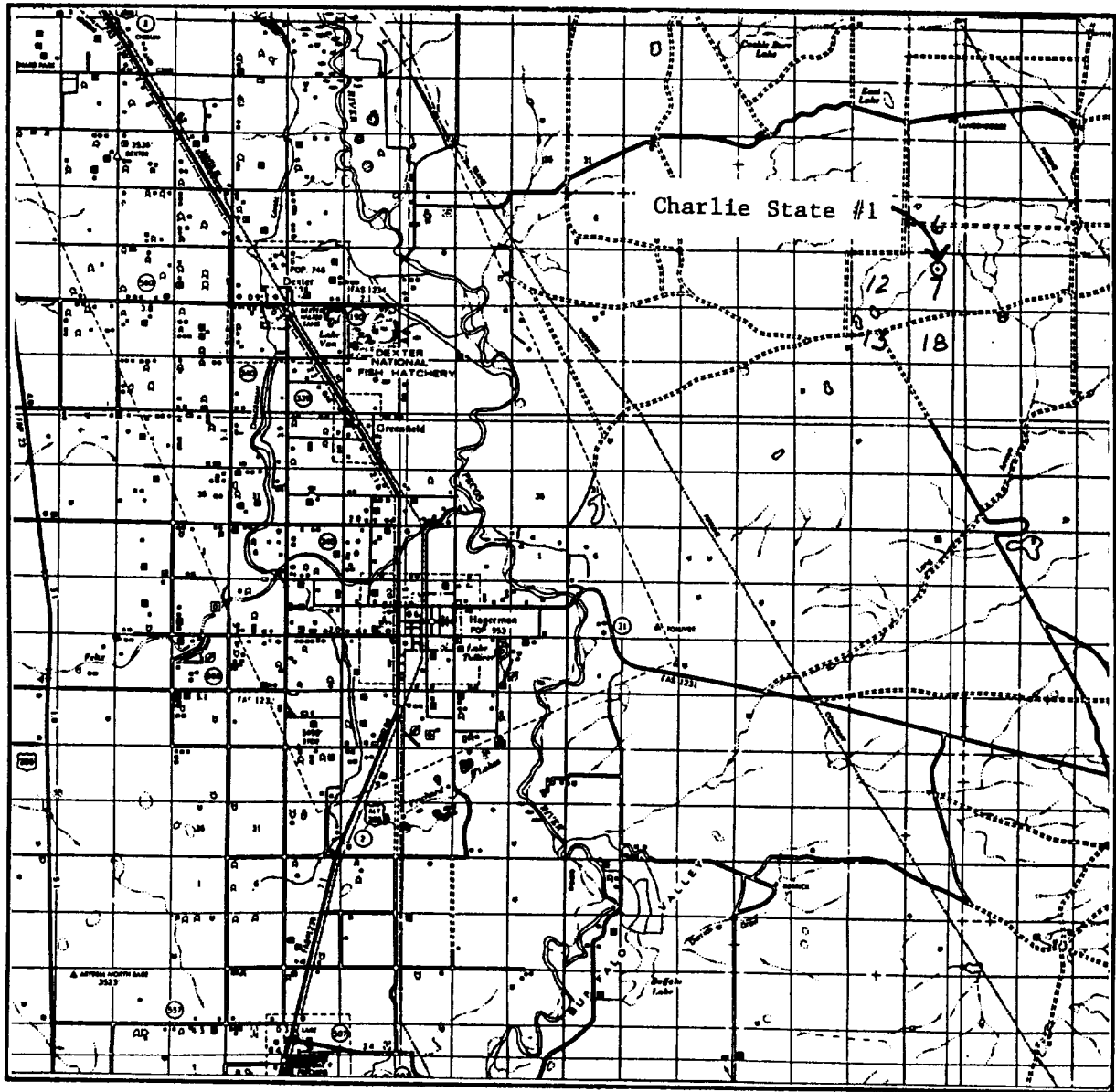
LEASE Charlie State #1

U.S.G.S. TOPOGRAPHIC MAP

Bar C Bar Ranch, NM

JOHN WEST ENGINEERING
HOBBS, NEW MEXICO
(505) 393-3117

VICINITY MAP



SCALE: 1" = 3 MILES

SEC. 7 TWP. 13S RGE. 28E

SURVEY N.M.P.M.

COUNTY Chaves STATE NM

DESCRIPTION 1910' FNL & 2015' FEL

ELEVATION 3646.2'

OPERATOR Hanagan Petroleum Corp.

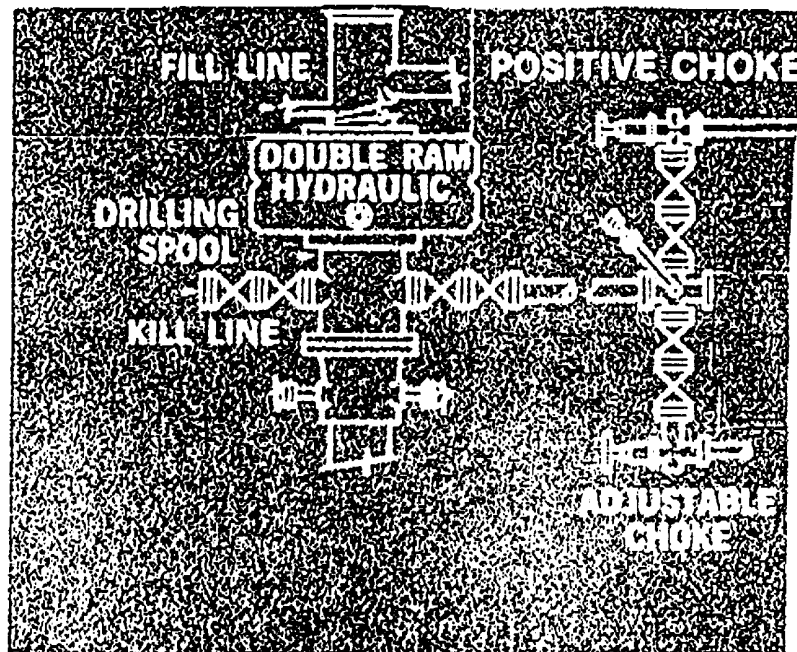
LEASE Charlie State #1

JOHN WEST ENGINEERING
HOBBS, NEW MEXICO
(505) 393-3117

BOP Description

Peterson Drilling Company

Rig #2



Working Pressure - 3000 psi