

Submit to Appropriate
District Office
State Lease-4 copies
Fee Lease-3 copies

State of New Mexico
Energy, Minerals and Natural Resources Department

Form C-102
Revised 1-1-89

OIL CONSERVATION DIVISION

P.O. Box 2088
Santa Fe, New Mexico 87504-2088

DISTRICT I
P.O. Box 1980, Hobbs, NM 88240

DISTRICT II
P.O. Drawer DD, Artesia, NM 88210

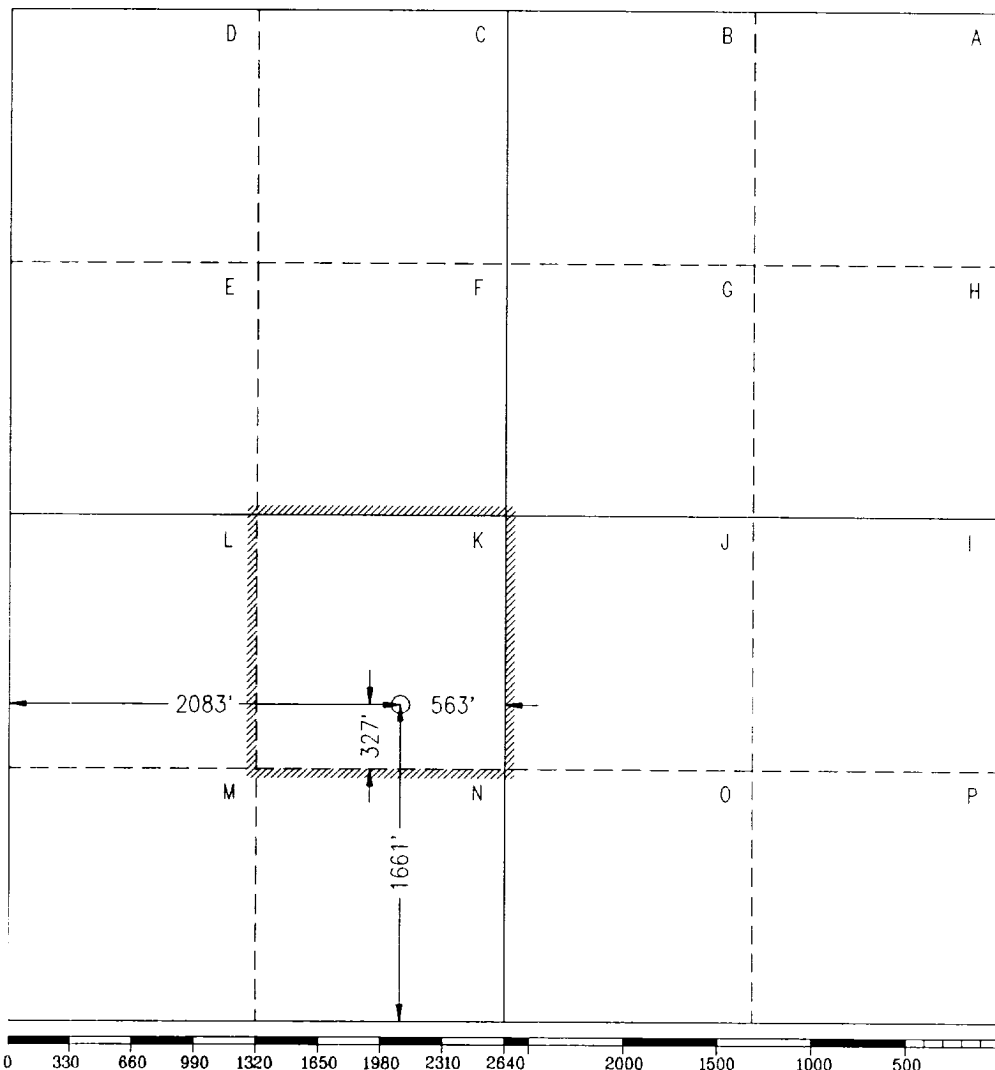
DISTRICT III
1000 Rio Brazos Rd., Aztec, NM 87410

WELL LOCATION AND ACREAGE DEDICATION PLAT

All distances must be from the outer boundaries of the Section.

Operator Hanagan Petroleum Corporation		Lease Lobo Federal		Well No. 1
Unit Letter K	Section 33	Township 13S	Range 29E NMPM	County Chaves
Actual Footage Location of Well: 1661 feet from the South line and 2083 feet from the West line.				
Ground level Elev. 3704	Producing Formation Devonian	Pool 1.1ND Lone Wolf Devonian South	Dedicated Acreage: 40 Acres	

- Outline the acreage dedicated to the subject well by colored pencil or hachure marks on the plat below.
- If more than one lease is dedicated to the well, outline each and identify the ownership thereof (both as to working interest and royalty).
- If more than one lease of different ownership is dedicated to the well, have the interest of all owners been consolidated by communitization, unitization, force-pooling, etc.?
☐ Yes ☐ No If answer is "yes", type of consolidation _____
If answer is "no", list the owners and tract descriptions which have actually been consolidated. (Use reverse side of this form if necessary.) _____
No allowable will be assigned to the well until all interests have been consolidated (by communitization, unitization, forced-pooling, or otherwise) or until a non-standard unit, eliminating such interest, has been approved by the Division.



OPERATOR CERTIFICATION

I hereby certify that the information contained herein is true and complete to the best of my knowledge and belief.

Signature

Michael G. Hanagan

Printed Name

Michael G. Hanagan

Position

Vice President

Company

Hanagan Petroleum Corporation

Date

February 11, 1994

SURVEYOR CERTIFICATION

I hereby certify that the well location shown on this plat was plotted from field notes of actual surveys made by me or under my supervision, and that the same is true and correct to the best of my knowledge and belief.

Date Surveyed

February 10, 1994

Signature

Professional Surveyor

Certificate No.

10324

15 Miles East of Hagerman, New Mexico.

File No. A-0338