

UNITED STATES
DEPARTMENT OF THE INTERIOR
BUREAU OF LAND MANAGEMENT

APPLICATION FOR PERMIT TO DRILL OR DEEPEN

1a. TYPE OF WORK

DRILL ☒DEEPEN ☐

b. TYPE OF WELL

OIL WELL ☐GAS WELL ☒OTHER ☐SINGLE ZONE ☐MULTIPLE ZONE ☐

2. NAME OF OPERATOR

YATES PETROLEUM CORPORATION

3. ADDRESS AND TELEPHONE NO.

105 South Fourth Street, Artesia, New Mexico 88210

4. LOCATION OF WELL (Report location clearly and in accordance with any State requirements)

At surface

Unit Letter O; 660' FSL and 1980' FEL

At proposed prod. zone

Same

14. DISTANCE IN MILES AND DIRECTION FROM NEAREST TOWN OR POST OFFICE*

30 miles Northeast of Roswell, New Mexico

15. DISTANCE FROM PROPOSED*

LOCATION TO NEAREST
PROPERTY OR LEASE LINE, FT.
(Also to nearest drlg. unit line, if any)

16. NO. OF ACRES IN LEASE

720

17. NO. OF ACRES ASSIGNED
TO THIS WELL

160

18. DISTANCE FROM PROPOSED LOCATION*
TO NEAREST WELL, DRILLING, COMPLETED,
OR APPLIED FOR, ON THIS LEASE, FT.

19. PROPOSED DEPTH

4250'

20. ROTARY OR CABLE TOOLS

Rotary

21. ELEVATIONS (Show whether DF, RT, GR, etc.)

3726' GR

22. APPROX. DATE WORK WILL START*

ASAP

PROPOSED CASING AND CEMENTING PROGRAM

SIZE OF HOLE	GRADE, SIZE OF CASING	WEIGHT PER FOOT	SETTING DEPTH	QUANTITY OF CEMENT
14.75"	9.625" J-55	36#	900'	700 SX
* 8.75"	7.0" J-55	23#	1500'	250 SX
7.875"	4.5" J-55	10.5#	TD	350 SX

Yates Petroleum Corporation proposes to drill and test the Abo and intermediate formation. Approximately 900' of surface casing will be set and cement circulated to the surface. (* If lost circulation is encountered, 7" casing will be set to approximately 1500'. Hole size will be reduced to 6.125".) If commercial, production casing will be run and cemented with adequate cover, perforated and stimulated as needed for production.

MUD PROGRAM: Spud to 900' with FW Gel/LCM; 900' to 3500' with cut brine; 3500' to TD.

BOPE PROGRAM: BOPE will be installed on the 9.625' casing and tested daily for operational.

GAS NOT DEDICATED.

PLEASE BE ADVISED THAT THERE WILL BE NO EXCAVATION OF FEDERALLY OWNED MINERAL MATERIAL FOR CONSTRUCTION OF THE ACCESS ROAD OR PAD WITHOUT PAYMENT IN ADVANCE.

Post FD-1
10-14-94
Near Line 4
API

IN ABOVE SPACE DESCRIBE PROPOSED PROGRAM: If proposal is to deepen, give data on present productive zone and proposed new productive zone. If proposal is to drill or deepen directionally, give pertinent data on subsurface locations and measured and true vertical depths. Give blowout preventer program, if any.

24.

SIGNED

Clifton R. May

TITLE

PERMIT AGENT

DATE

8/11/94

(This space for Federal or State office use)

PERMIT NO.

APPROVAL DATE

Application approval does not warrant or certify that the applicant holds legal or equitable title to those rights in the subject lease which would entitle the applicant to conduct operations thereon.

CONDITIONS OF APPROVAL, IF ANY:

APPROVED BY

J. H. Spain

TITLE

Acting AM

DATE

9-30-94

*See Instructions On Reverse Side

District I
PO Box 1980, Hobbs, NM 88241-1980
District II
PO Drawer DD, Artesia, NM 88211-0719
District III
1000 Rio Brazos Rd., Aztec, NM 87410
District IV
PO Box 2088, Santa Fe, NM 87504-2088

State of New Mexico
Energy, Minerals & Natural Resources Department

OIL CONSERVATION DIVISION
PO Box 2088
Santa Fe, NM 87504-2088

Form C-102
Revised February 10, 1994
Instructions on back
Submit to Appropriate District Office
State Lease - 4 Copies
Fee Lease - 3 Copies

☐ AMENDED REPORT

WELL LOCATION AND ACREAGE DEDICATION PLAT

1 API Number 30-005-63026		2 Pool Code 82730		3 Pool Name PECOS SLOPE ABO			
4 Property Code		5 Property Name YANKEE "ANK" FEDERAL COM.				6 Well Number 1	
7 OGRID No.		8 Operator Name YATES PETROLEUM CORPORATION				9 Elevation 3726	

10 Surface Location

UL or lot no.	Section	Township	Range	Lot Idn	Feet from the	North/South line	Feet from the	East/West line	County
0	11	7S	25E		660	South	1980	East	Chaves

11 Bottom Hole Location If Different From Surface

UL or lot no.	Section	Township	Range	Lot Idn	Feet from the	North/South line	Feet from the	East/West line	County

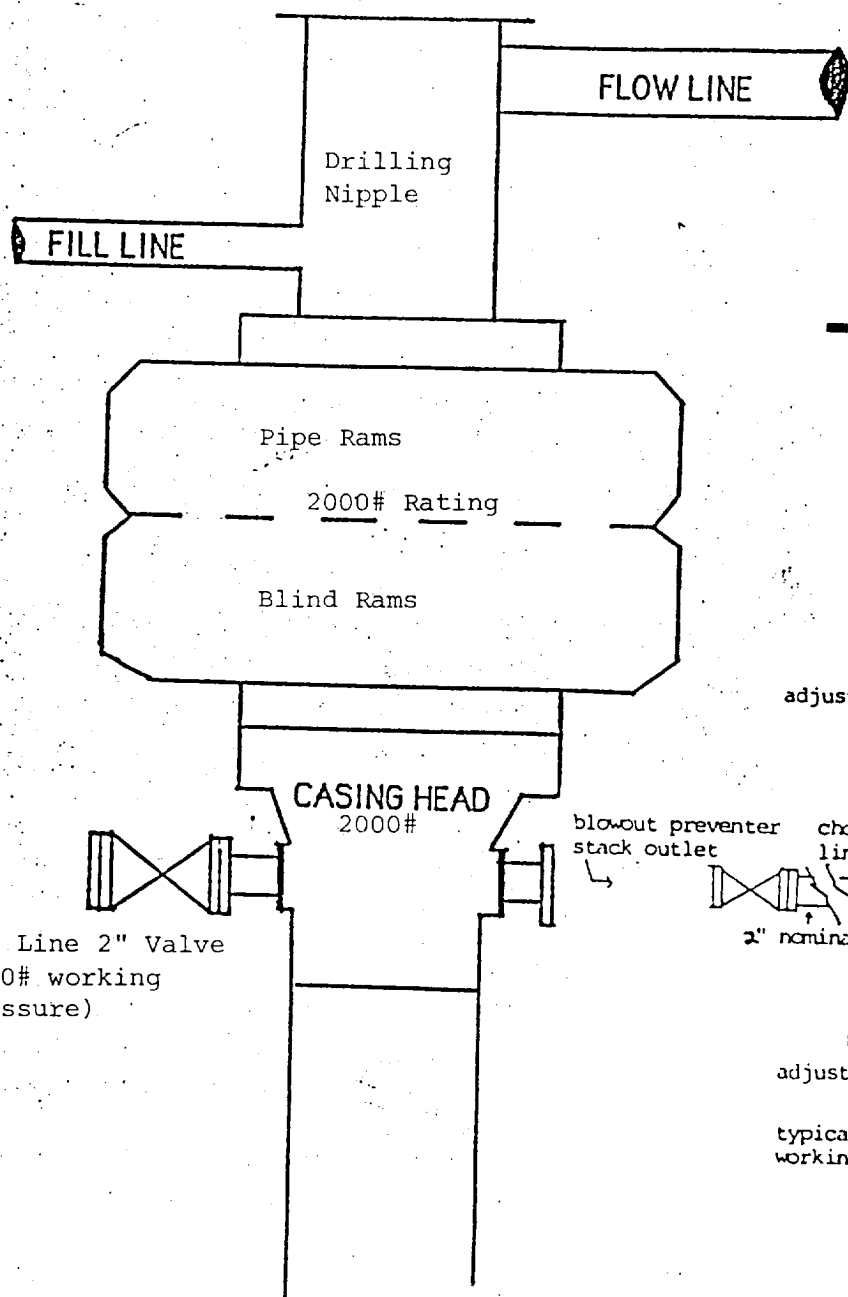
12 Dedicated Acres 160	13 Joint or Infill	14 Consolidation Code	15 Order No.
---------------------------	--------------------	-----------------------	--------------

NO ALLOWABLE WILL BE ASSIGNED TO THIS COMPLETION UNTIL ALL INTERESTS HAVE BEEN CONSOLIDATED
OR A NON-STANDARD UNIT HAS BEEN APPROVED BY THE DIVISION

16					17 OPERATOR CERTIFICATION I hereby certify that the information contained herein is true and complete to the best of my knowledge and belief. Clifton R. May Signature CLIFTON R. MAY Printed Name Permit Agent Title August 11, 1994 Date
					18 SURVEYOR CERTIFICATION I hereby certify that the well location shown on this plat was plotted from field notes of actual surveys made by me or under my supervision, and that the same is true and correct to the best of my belief. 5/05/94 Date of Survey Signature of Professional Surveyor HERSCHEL L. JONES 3640 Certificate Number 3640

YATES PETROLEUM CORPORATION

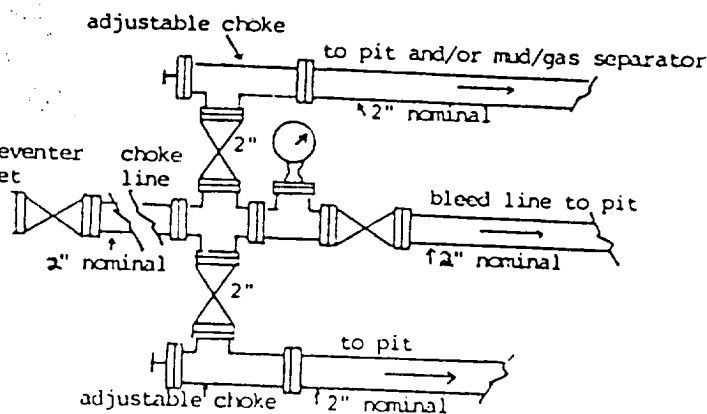
RECEIVED
AUG 12 8 21 AM '94
BUREAU OF REVENUE
ROSBARRE SOURCE
FBI



Yates Petroleum Corporation
105 SOUTH 4th STREET
ARTESIA, NEW MEXICO 88210

YANKEE ANK FEDERAL COM #1
660' FSL and 1980' FEL
Sec. 11-T7S-R25E
Chaves County, New Mexico

EXHIBIT B



typical choke manifold assembly for 2M rated
working pressure service-surface installation

**BLOWOUT PREVENTER
2M SYSTEM**