

District I
PO Box 1980, Hobbs, NM 88241-1980
District II
PO Drawer DD, Artesia, NM 88211-0719
District III
1000 Rio Brazos Rd., Aztec, NM 87410
District IV
PO Box 2088, Santa Fe, NM 87504-2088

State of New Mexico
Energy, Minerals & Natural Resources Department

OIL CONSERVATION DIVISION
PO Box 2088
Santa Fe, NM 87504-2088

Form C-101
Revised February 10, 1994
Instructions on back
Submit to Appropriate District Office
State Lease - 6 Copies
Fee Lease - 5 Copies

☐ AMENDED REPORT

APPLICATION FOR PERMIT TO DRILL, RE-ENTER, DEEPEN, PLUGBACK, OR ADD A ZONE

Operator Name and Address: Primero Operating, Inc. P. O. Box 1433 Roswell, NM 88202-1433		OGRID Number 018100
Property Code 16298		Property Name Moriah
API Number 30-005-63035		Well No. 1

7 Surface Location

UL or lot no.	Section	Township	Range	Lot Ida	Feet from the	North/South line	Feet from the	East/West line	County
A	18	10-S	29-E		330	North	349	East	Chaves

8 Proposed Bottom Hole Location If Different From Surface

UL or lot no.	Section	Township	Range	Lot Ida	Feet from the	North/South line	Feet from the	East/West line	County
Proposed Pool 1 Wildcat, Devonian					Proposed Pool 2 66101 96036				

Work Type Code N	Well Type Code 0	Cable/Rotary R	Lense Type Code P	Ground Level Elevation 3891
Multiple No	Proposed Depth 8300	Formation Devonian	Contractor Unknown	Sand Date January 1, 1995

21 Proposed Casing and Cement Program

Hole Size	Casing Size	Casing weight/foot	Setting Depth	Sacks of Cement	Estimated TOC
12 $\frac{1}{4}$	8-5/8	24	2200	1000	Surface
7-7/8	5-1/2	15.5 & 17#	TD	800	2200

Describe the proposed program. If this application is to DEEPEN or PLUG BACK give the data on the present productive zone and proposed new productive zone. Describe the blowout prevention program, if any. Use additional sheets if necessary.

We propose to drill a 12-1/4" hole to 2200' (top of San Andres) and set 8-5/8 24# API csg with 11 centralizers, float collar and shoe. We will circulate cement. WOC 18 hrs and drill a 7-7/8" hole to TD and log the hole. If the well is un-commercial we will plug and abandon following NMOC Rules and Regulations. If the well looks commercial, we will run 5-1/2" csg and complete as an oil well.

SEE ATTACHED BOP DIAGRAM

Post ID-1
12-23-94
New Loc & API

I hereby certify that the information given above is true and complete to the best of my knowledge and belief Signature: _____		OIL CONSERVATION DIVISION	
Printed name: Phelps White		Approved by: _____	
Title: President		Title: _____	
Date: 11/23/94		Approval Date: _____	Expiration Date: _____
Phone: 505-622-1001		Conditions of Approval: Attached <input type="checkbox"/>	

OIL CONSERVATION DIVISION

P.O. Box 2088
Santa Fe, New Mexico 87504-2088

DISTRICT I

P.O. Box 1980, Hobbs, NM 88240

DISTRICT II

P.O. Drawer DD, Artesia, NM 88210

DISTRICT III

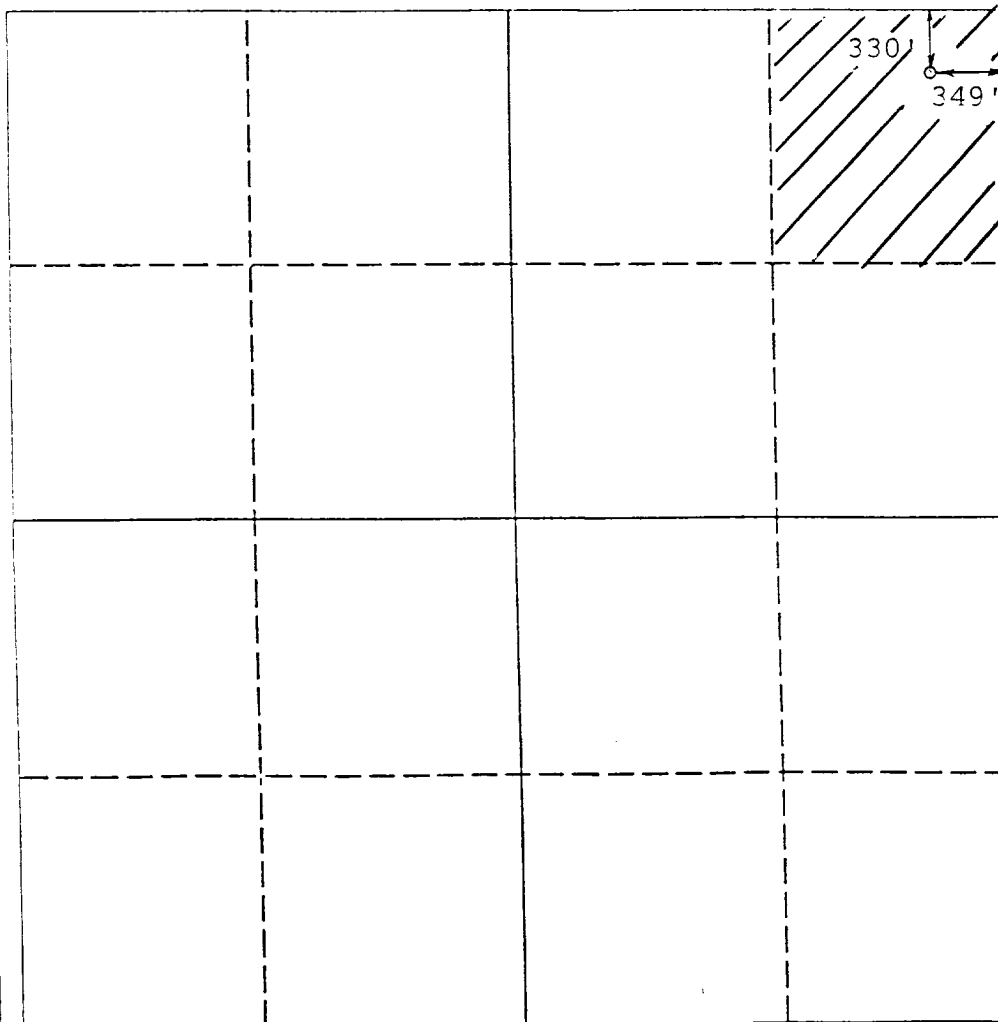
1000 Rio Brazos Rd., Aztec, NM 87410

WELL LOCATION AND ACREAGE DEDICATION PLAT

All Distances must be from the outer boundaries of the section

Operator Primero Operating, Inc.			Lease Moriah		Well No. 1
Unit Letter A	Section 18	Township 10 South	Range 29 East	County Chaves	
Actual Footage Location of Well: 330 feet from the North line and 349 feet from the East line					
Ground level Elev. 3891	Producing Formation DEVONIAN		Pool WILDCAT	Dedicated Acreage: 40 Acres	

- Outline the acreage dedicated to the subject well by colored pencil or hatchure marks on the plat below.
- If more than one lease is dedicated to the well, outline each and identify the ownership thereof (both as to working interest and royalty).
- If more than one lease of different ownership is dedicated to the well, have the interest of all owners been consolidated by communitization, unitization, force-pooling, etc?
☒ Yes ☐ No If answer is "yes" type of consolidation COMMUNITIZATION
If answer is "no" list the owners and tract descriptions which have actually been consolidated. (Use reverse side of this form if necessary.)
No allowable will be assigned to the well until all interests have been consolidated (by communitization, unitization, forced-pooling, or otherwise) or until a non-standard unit, eliminating such interest, has been approved by the Division.



OPERATOR CERTIFICATION

I hereby certify that the information contained herein is true and complete to the best of my knowledge and belief.

Signature

Printed Name
PHELPS WHITE

Position
PRESIDENT

Company
PRIMERO OPERATING

Date
12/9/94

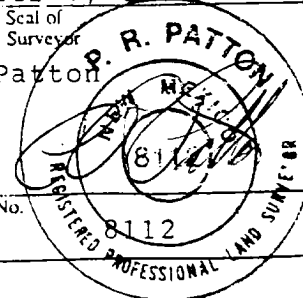
SURVEYOR CERTIFICATION

I hereby certify that the well location shown on this plat was plotted from field notes of actual surveys made by me or under my supervision, and that the same is true and correct to the best of my knowledge and belief.

Date Surveyed
December 7, 1994

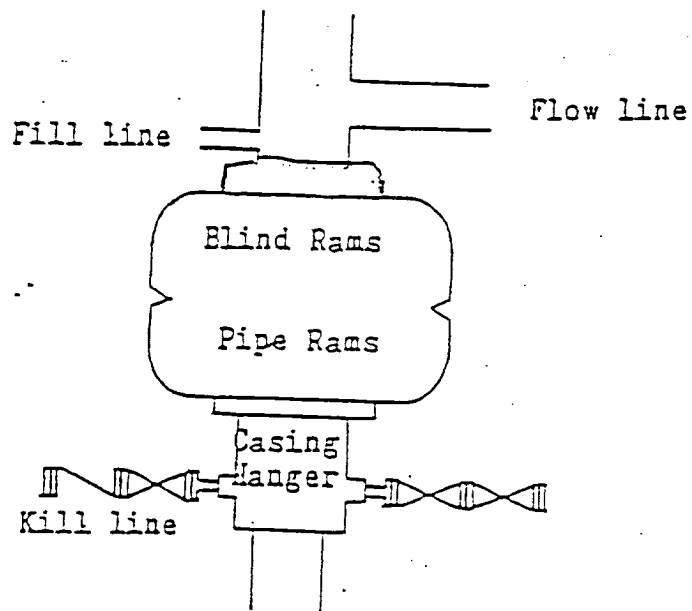
Signature & Seal of
Professional Surveyor
P.R. Patton

Certificate No.
8112



PRIMERO OPERATING, INC.

MORIAH #1



Blowout Preventer
3000 psi working pressure