

UNITED STATES  
DEPARTMENT OF THE INTERIOR  
BUREAU OF LAND MANAGEMENT

APPLICATION FOR PERMIT TO DRILL, DEEPEN, OR PLUG BACK

1a. TYPE OF WORK

DRILL ☒

DEEPEN ☐

PLUG BACK ☐

b. TYPE OF WELL

OIL  
WELL ☒

GAS  
WELL ☐

OTHER ☐

SINGLE  
ZONE ☐

MULTIPLE  
ZONE ☐

2. NAME OF OPERATOR

Marbob Energy Corporation

14049

3a. Area Code & Phone No.

505-748-3303

3. ADDRESS OF OPERATOR

P. O. Drawer 217, Artesia, NM 88210

4. LOCATION OF WELL (Report location clearly and in accordance with any State requirements.)\*

At surface

2588 FSL 2309 FEL  
At proposed prod. zone

SAME

Unit (3)

14. DISTANCE IN MILES AND DIRECTION FROM NEAREST TOWN OR POST OFFICE\*

FROM DEXTER, PROCEED EAST ON WICHITA ROAD APPX. 3.6 MILES

10. DISTANCE FROM PROPOSED\*

LOCATION TO NEAREST  
PROPERTY OR LEASE LINE, FT.  
(Also to nearest drlg. unit line, if any)

2309'

16. NO. OF ACRES IN LEASE

2280

17. NO. OF ACRES ASSIGNED  
TO THIS WELL

160

13. DISTANCE FROM PROPOSED LOCATION\*

TO NEAREST WELL, DRILLING, COMPLETED,  
OR APPLIED FOR, ON THIS LEASE, FT.

first well  
on lease

19. PROPOSED DEPTH

7700'

20. ROTARY OR CABLE TOOLS

ROTARY

21. ELEVATIONS (Show whether DF, RT, GR, etc.)

3599'

22. APPROX. DATE WORK WILL START\*

MAY 10, 1995

PROPOSED CASING AND CEMENTING PROGRAM

HOLE SIZE	CASING SIZE	WEIGHT/FOOT	GRADE	THREAD TYPE	SETTING DEPTH	QUANTITY OF CEMENT
17 1/2"	13 3/8"	54#	H-40	STC R-3	225'	375 SX
12 1/4"	8 5/8"	24#	J-55	STC R-3	1475'	1400 SX
7 7/8"	5 1/2"	17#	J-55	LTC R-3	7700'	CMT AS NECESSARY

Pay zone will be selectively perforated and stimulated  
as needed for optimum production.

Attached are: 1. Location & Acreage Dedication Plat  
2. Supplemental Drilling Data  
3. Surface Use Plan

RECEIVED

Post LD /  
MAY - 8 1995 5-12-95  
New Loc & API.  
OIL CON. DIV.  
DIST. 2

PLEASE BE ADVISED THAT THERE WILL BE NO EXCAVATION  
OF FEDERALLY OWNED MINERAL MATERIAL FOR CONSTRUCTION  
OF THE ACCESS ROAD OR PAD WITHOUT PAYMENT  
IN ADVANCE.

APPROVAL OF THIS APPLICATION DOES NOT WARRANT OR  
CERTIFY THAT THE APPLICANT HOLDS LEGAL OR EQUITABLE  
TITLE TO THOSE RIGHTS IN THE SUBJECT LEASE WHICH WOULD  
ENTITLE THE APPLICANT TO CONDUCT OPERATIONS THEREON.

IN ABOVE SPACE DESCRIBE PROPOSED PROGRAM: If proposal is to deepen or plug back, give data on present productive zone and proposed new productive zone. If proposal is to drill or deepen directionally, give pertinent data on subsurface locations and measured and true vertical depths. Give blowout preventer program, if any.

24.

SIGNED Robin Smith

TITLE Production Clerk

DATE 4/4/95

(This space for Federal or State office use)

PERMIT NO. \_\_\_\_\_

APPROVAL DATE \_\_\_\_\_

APPROVED BY T.L. Keagan

TITLE Area Manager

DATE 5/5/95

CONDITIONS OF APPROVAL, IF ANY:

NSL # R-10352

4/13/95

\*See Instructions On Reverse Side

District I  
PO Box 1586, Hobbs, NM 88241-1980

District II  
PO Drawer DD, Artesia, NM 88211-0719

District III  
1000 Rio Brasos Rd., Aztec, NM 87410

District IV  
PO Box 2088, Santa Fe, NM 87504-2088

State of New Mexico  
Energy, Minerals & Natural Resources Department

Form C-102  
Revised February 10, 1994  
Submit to Appropriate District Office  
State Lease - 4 Copies  
Fee Lease - 3 Copies

OIL CONSERVATION DIVISION

PO Box 2088  
Santa Fe, NM 87504-2088

AMENDED REPORT

WELL LOCATION AND ACREAGE DEDICATION PLAT

1 API Number <b>30-005-63069</b>	2 Pool Code <b>96035</b>	3 Pool Name <b>Wildcat ; Group 4</b>
4 Property Code	5 Property Name <b>Havasu Federal</b>	6 Well Number <b>1</b>
7 OGRID No. <b>014049</b>	8 Operator Name <b>Marbob Energy</b>	9 Elevation <b>3599</b>

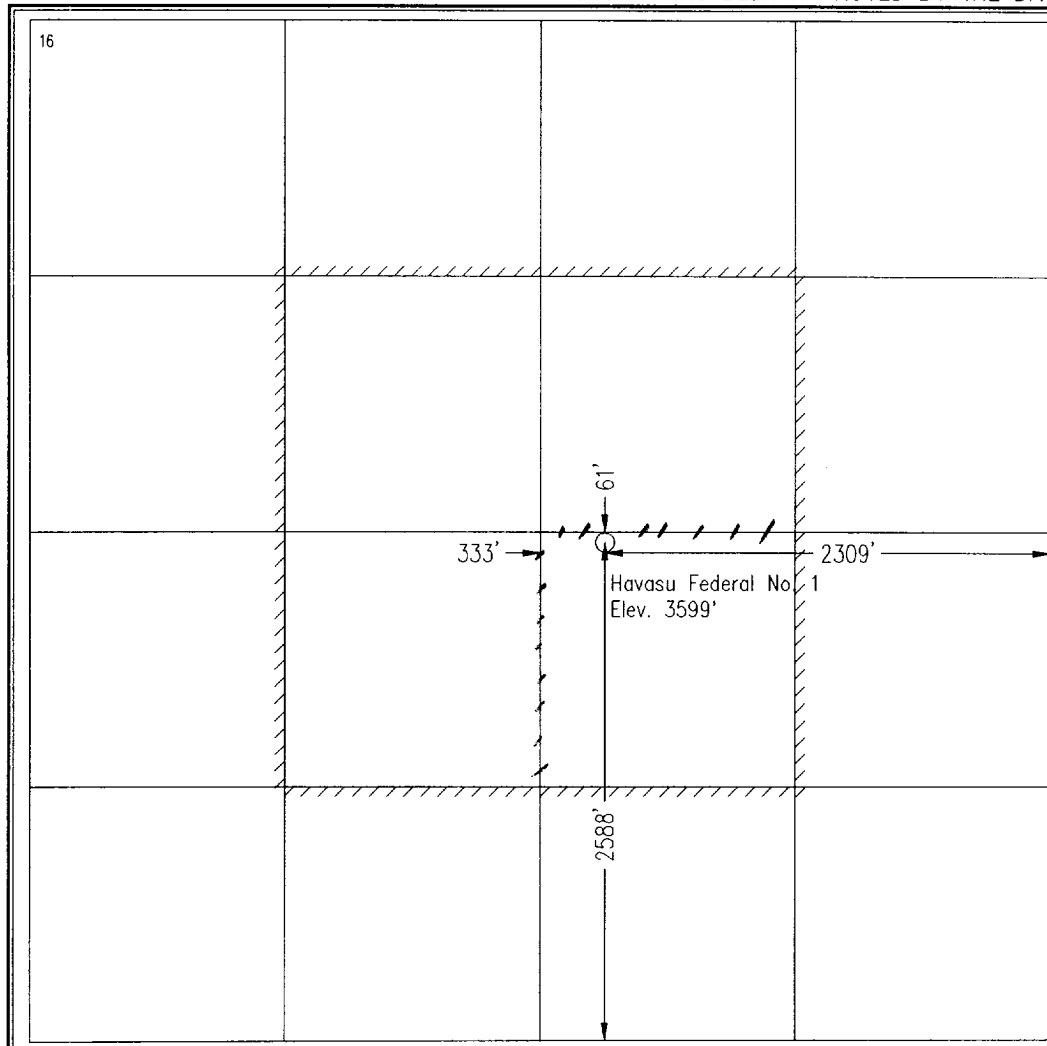
Surface Location

UL or lot no. <b>J</b>	Section <b>11</b>	Township <b>13 S</b>	Range <b>27 E</b>	Lot Idn	Feet from the <b>2588</b>	North/South line <b>South</b>	Feet from the <b>2309</b>	East/West line <b>East</b>	County <b>Chaves</b>
---------------------------	----------------------	-------------------------	----------------------	---------	------------------------------	----------------------------------	------------------------------	-------------------------------	-------------------------

Bottom Hole Location If Different From Surface

UL or lot no.	Section	Township	Range	Lot Idn	Feet from the	North/South line	Feet from the	East/West line	County
12 Dedicated Acres <b>1.40</b>	13 Joint or Infill	14 Consolidation Code	15 Order No.						

NO ALLOWABLE WILL BE ASSIGNED TO THIS COMPLETION UNITL ALL INTERESTS HAVE BEEN CONSOLIDATED  
OR A NON-STANDARD UNIT HAS BEEN APPROVED BY THE DIVISION



OPERATOR CERTIFICATION

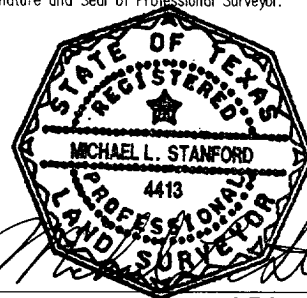
I hereby certify that the information  
contained herein is true and complete to the  
best of my knowledge and belief.

Robin Smith  
Signature  
**Robin Smith**  
Printed Name  
**Production Clerk**  
Title  
**4/4/95**  
Date

SURVEYOR CERTIFICATION

I hereby certify that the well location shown on this plat  
was plotted from field notes of actual surveys made by  
me or under my supervision, and that the same is true  
and correct to the best of my belief.

**February 28, 1995**  
Date of Survey  
Signature and Seal of Professional Surveyor.



Certificate Number **10324**

New Mexico Oil Conservation Division  
C-102 Instructions

IF THIS IS AN AMENDED REPORT, CHECK THE BOX LABELED  
"AMENDED REPORT" AT THE TOP OF THIS DOCUMENT.

Surveyors shall use the latest United States government survey or  
depended resurvey. Well locations will be in reference to the New  
Mexico Principal Meridian. If the land is not surveyed contact the  
appropriate OCD district office. Independent subdivision surveys will  
not be acceptable.

1. The OCD assigned API number for this well
2. The pool code for this (proposed) completion
3. The pool name for this (proposed) completion
4. The property code for this (proposed) completion
5. The property name (well name) for this (proposed)  
completion
6. The well number of this (proposed) completion
7. Operator's OGRID number
8. The Operator's name
9. The ground level elevation of this well
10. The surveyed surface location of this well measured from  
the section lines, NOTE: if the United States government  
survey designates a Lot Number for this location use that  
number in the "UL or Lot no." box. Otherwise use the OCD  
unit letter.
11. Proposed bottom hole location. If this is a horizontal hole  
indicate the location of the end of the hole.
12. The calculated acreage dedicated to this completion to the  
nearest hundredth of an acre.
13. Put a Y if more than one completion will be sharing this  
same acreage or N if this is the only completion of this  
acreage
14. If more than one lease of different ownership has been  
dedicated to the well show the consolidation code from  
the following table:

C	Communitization
U	Unitization
F	Forced pooling
O	Other
P	Consolidation pending

NO ALLOWABLE WILL BE ASSIGNED TO THIS COMPLETION UNTIL  
ALL INTERESTS HAVE BEEN CONSOLIDATED OR A NON-STANDARD  
UNIT HAS BEEN APPROVED BY THE DIVISION!

15. Write in the OCD order(s) approving a non-standard  
location, non-standard spacing, or directional or horizontal  
drilling

16. This grid represents a standard section. You may  
superimpose a non-standard section over this grid. Outline  
the dedicated acreage and the separate leases within that  
dedicated acreage. Show the well surface location and  
bottom hole location, if it is directionally drilled with the  
dimensions from the section lines in the cardinal directions.  
(Note: A legal location is determined from the perpendicular  
distance to the edge of the tract.) If this is a high angle or  
horizontal hole show that portion of the well bore that is  
open within this pool.

Show all lots, lot numbers, and their respective acreage.

If more than one lease has been dedicated to the  
completion, outline each one and identify the ownership as  
to both working interest and royalty.

17. The signature, printed name, and title of the person  
authorized to make this report, and the date this document  
was signed.
18. The registered surveyors certification. This section does  
not have to be completed if this form has been previously  
accepted by the OCD and is being filed for a change of pool  
or dedicated acreage.

EXHIBIT #1

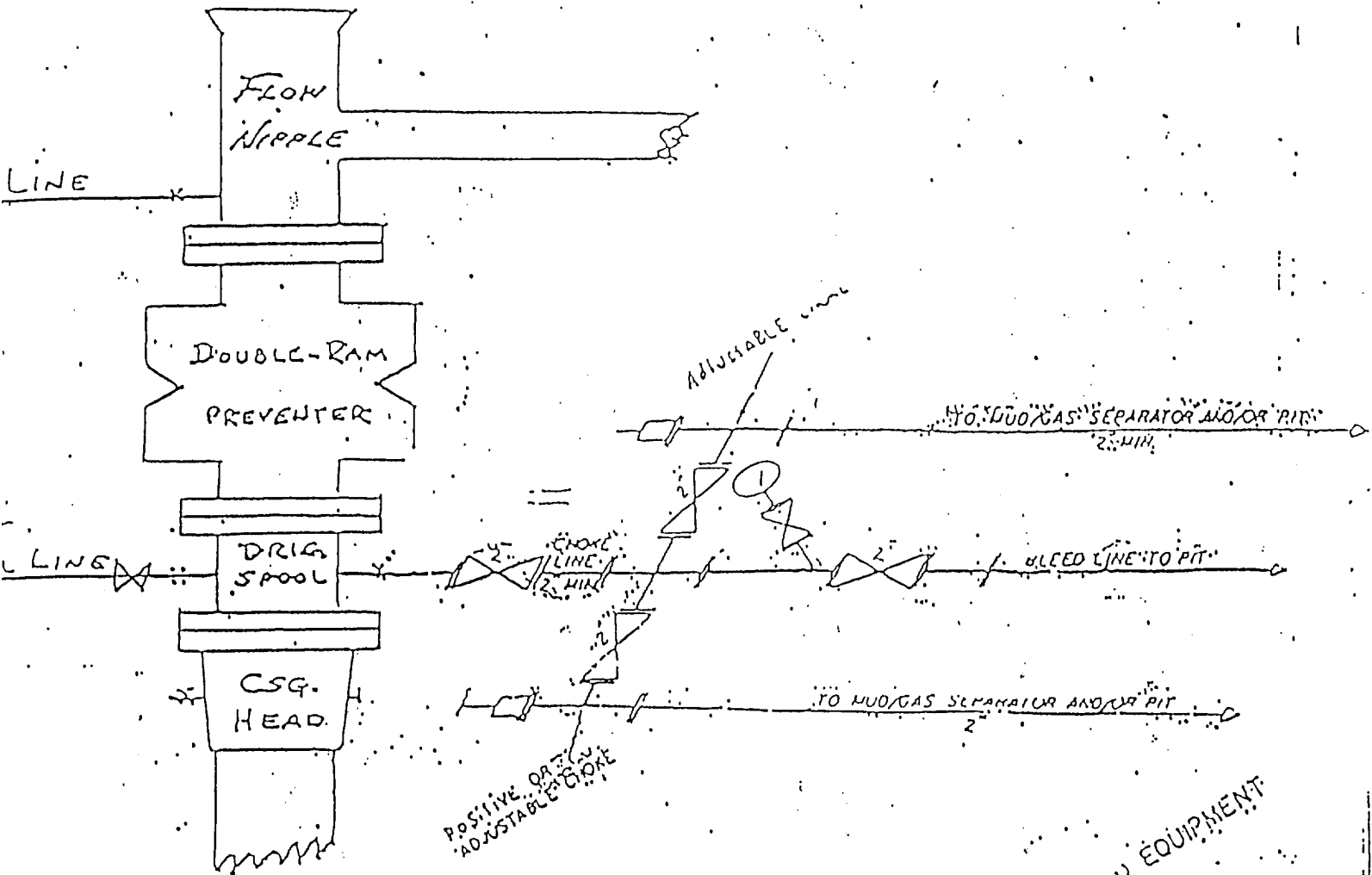
# B O P & CHOKE MANIFOLD

10"/900 Cameron SS Space Saver

3000# Working Pressure

3,000# Working Pressure Choke Manifold

*Used as a 2M system.*



MARBOB ENERGY CORPORATION

Exhibit #1 BOPE Diagram

Havasu Federal No. 1

2588' FSL & 2309' FEL

Section 11 - T13S - R27E

Chaves County, New Mexico

2 1/2" CHOKE MANIFOLD EQUIPMENT