

District I
PO Box 1980, Hobbs, NM 88241-1980
District II
PO Drawer DD, Artesia, NM 88211-0719
District III
1000 Rio Brazos Rd., Aztec, NM 87410
District IV
PO Box 2088, Santa Fe, NM 87504-2088

State of New Mexico
Energy, Minerals & Natural Resources Department

OIL CONSERVATION DIVISION
PO Box 2088
Santa Fe, NM 87504-2088

Form C-101
Revised February 10, 1994
Instructions on back
Submit to Appropriate District Office
State Lease - 6 Copies
Fee Lease - 5 Copies

☒ AMENDED REPORT

APPLICATION FOR PERMIT TO DRILL, RE-ENTER, DEEPEN, PLUGBACK, OR ADD A ZONE

Operator Name and Address. McKay Oil Corporation P.O. Box 2014 Roswell, New Mexico 88202		OGRID Number 014424
Property Code 20094	Property Name Remmele "B" State Com.	API Number 30-005-63115
		Well No. 9

7 Surface Location

UL or lot no.	Section	Township	Range	Lot Ida	Feet from the	North/South line	Feet from the	East/West line	County
G	27	6S	22E	SW/4NE/4	2250'	North	2000'	East	Chaves

8 Proposed Bottom Hole Location If Different From Surface

UL or lot no.	Section	Township	Range	Lot Ida	Feet from the	North/South line	Feet from the	East/West line	County

9 Proposed Pool 1

10 Proposed Pool 2

W. Pecos Slope Abo Gas 82740	
------------------------------	--

11 Work Type Code	12 Well Type Code	13 Cable/Rotary	14 Lease Type Code	15 Ground Level Elevation
16 Multiple	17 Proposed Depth	18 Formation	19 Contractor	20 Spud Date

21 Proposed Casing and Cement Program

Hole Size	Casing Size	Casing weight/foot	Setting Depth	Sacks of Cement	Estimated TOC

Describe the proposed program. If this application is to DEEPEN or PLUG BACK give the data on the present productive zone and proposed new productive zone. Describe the blowout prevention program, if any. Use additional sheets if necessary.

This amended report is to change the drillsite location for the well. All other information remains the same.

22 I hereby certify that the information given above is true and complete to the best of my knowledge and belief.

Signature:

Bill J. Milstead

Printed name:

Bill J. Milstead

Title:

Vice President - Land and Legal

Date:

9/26/97

Phone:

(505) 623-4735

OIL CONSERVATION DIVISION

Approved by:

ORIGINAL SIGNED BY TIM W. GUM

Title:

DISTRICT II SUPERVISOR

Approval Date:

OCT 28 1997

Expiration Date:

Conditions of Approval:

Attached ☐

OIL CONSERVATION DIVISION

P.O. Box 2088
Santa Fe, New Mexico 87504-2088

04, NM 88240

05, NM 88210

06, NM 87410

WELL LOCATION AND ACREAGE DEDICATION PLAT

All Distances must be from the outer boundaries of the section

L CORP.		Lease REMMELE STATE COM "B"		Well No. 9
Section 27	Township 6S	Range 22E	County CHAVES	
Location of Well: feet from the NORTH line and 2000 feet from the EAST line		Dedicated Acreage: Acres		
Producing Formation		Pool		

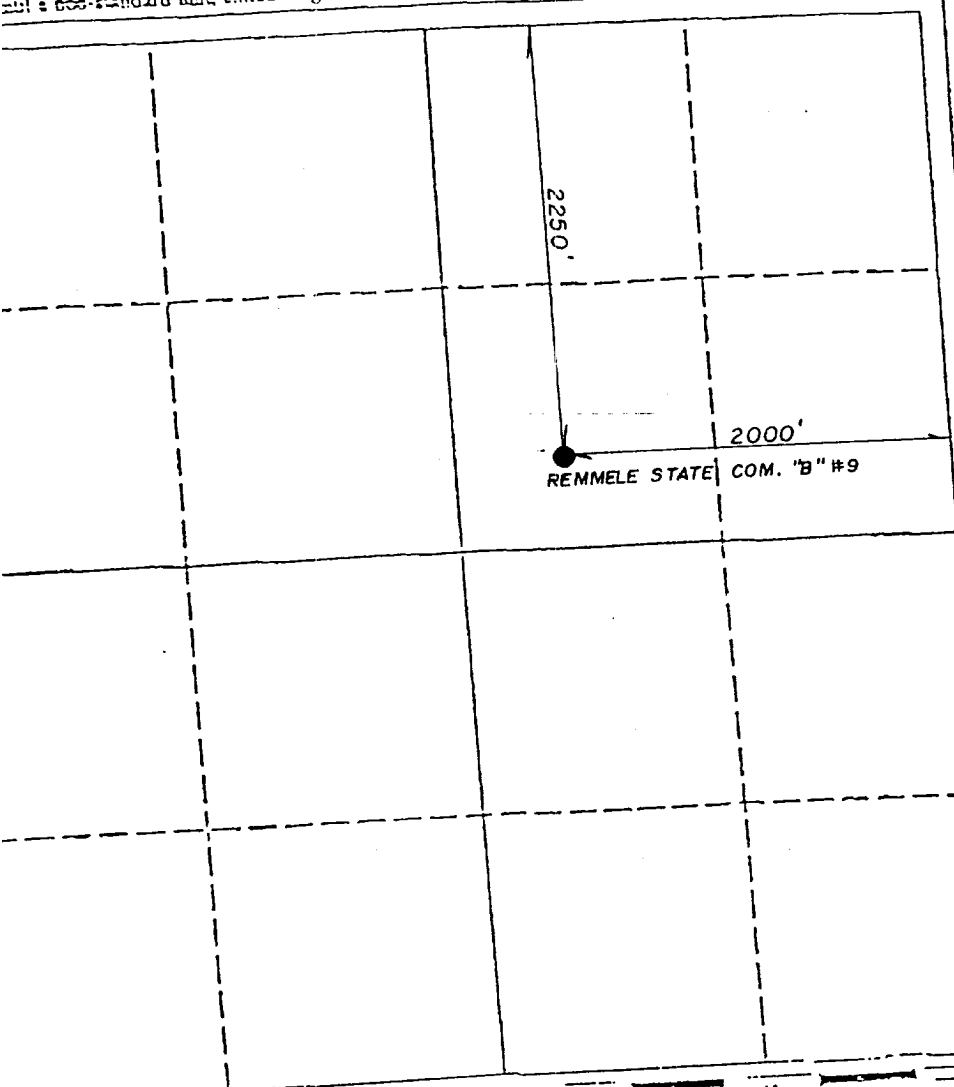
Line the acreage dedicated to the subject well by colored pencil or fasture marks on the plat below.

more than one lease is dedicated to the well, outline each and identify the ownership thereof (both as to working interest and royalty).

more than one lease of different ownership is dedicated to the well, have the interest of all owners been consolidated by communitization, unitization, force-pooling, etc.?

☐ Yes ☐ No If answer is "yes" type of consolidation
If answer is "no" list the owners and tract descriptions which have actually been consolidated. (Use reverse side of form if necessary.)

Allowable will be assigned to the well until all interests have been consolidated (by communitization, unitization, force-pooling, or otherwise)
unit is non-standard unit, eliminating such interest, has been approved by the Division.



OPERATOR CERTIFICATION

I hereby certify that the information contained herein is true and complete to the best of my knowledge and belief.

Signature
Bill J. Milstead

Printed Name
Bill J. Milstead

Position
Vice President

Company
McKay Oil Corporation

Date
9/26/97

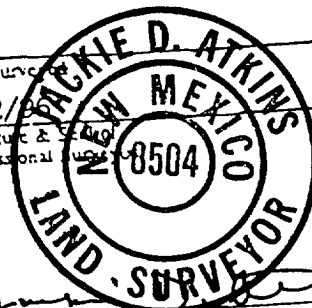
SURVEYOR CERTIFICATION

I hereby certify that the well location shown on this plat was plotted from field notes of actual surveys made by me or under my supervision, and that the same is true and correct to the best of my knowledge and belief.

Date Surveyed

12/97

Signature & Professional Seal



Certificate No.

LS 8504