

District I  
PO Box 1980, Hobbs, NM 88241-1980  
District II  
PO Drawer DD, Aztec, NM 88211-0719  
District III  
1000 Rio Brazos Rd., Aztec, NM 87410  
District IV  
PO Box 2088, Santa Fe, NM 87504-2088

State of New Mexico  
Energy, Minerals & Natural Resources Department

OIL CONSERVATION DIVISION  
PO Box 2088  
Santa Fe, NM 87504-2088

Form C-101  
Revised February 10, 1994  
Instructions on back  
Submit to Appropriate District Office  
State Lease - 6 Copies  
Fee Lease - 5 Copies

JAN 21 1997 ☐ AMENDED REPORT

APPLICATION FOR PERMIT TO DRILL, RE-ENTER, DEEPEN, PLUGBACK, OR ADD A ZONE

Operator Name and Address. MARBOB ENERGY CORPORATION P. O. BOX 227 ARTESIA, NM 88210		OIL CON. DIV. DIST. 2	OGRID Number 14049
Property Code 19665	Property Name KATIE ELDER STATE	API Number 30-005-63117	
		Well No. 2	

Surface Location

UL or lot no.	Section	Township	Range	Lot Ida	Feet from the	North/South line	Feet from the	East/West line	County
G	36	11S	27E	SWNE	2270	NORTH	2200	EAST	CHAVES

Proposed Bottom Hole Location If Different From Surface

UL or lot no.	Section	Township	Range	Lot Ida	Feet from the	North/South line	Feet from the	East/West line	County
Proposed Pool 1 CHISUM SAN ANDRES, SOUTH 96656					Proposed Pool 2				

Work Type Code N	Well Type Code O	Cable/Rotary R	Lense Type Code S	Ground Level Elevation 3742' GR
Multiple N	Proposed Depth 2900'	Formation SAN ANDRES	Contractor L&M	Spud Date 1/27/97

Proposed Casing and Cement Program

Hole Size	Casing Size	Casing weight/foot	Setting Depth	Sacks of Cement	Estimated TOC
12 1/4"	8 5/8"	24#	250'	325 SX	CIRC
7 7/8"	5 1/2"	17#	2900'	SUFFICIENT TO	ISOLATE
				PRODUCTION ZONE	
				500' min	

Describe the proposed program. If this application is to DEEPEN or PLUG BACK give the data on the present productive zone and proposed new productive zone. Describe the blowout prevention program, if any. Use additional sheets if necessary.

DRILL 12 1/4" HOLE TO 250', SET 8 5/8" CSG & CIRC CMT TO SURF, DRILL 7 7/8" HOLE TO 2900', SHOULD SHOW WARRANT - RUN 5 1/2" PROD CSG.

Posted ID-1  
H L & A P I  
1-30-97

I hereby certify that the information given above is true and complete to the best of my knowledge and belief.

Signature:

Printed name:

RHONDA NELSON

Title:

PRODUCTION CLERK

Date:

1/21/97

Phone:

748-3303

OIL CONSERVATION DIVISION

Approved by:

Jim W. Bunn BGA

Title:

District Supervisor

Approval Date:

1-22-97

Expiration Date:

1-22-98

Conditions of Approval:

Attached ☐

DISTRICT I  
P.O. Box 1980, Hobbs, NM 88241-1980

DISTRICT II  
P.O. Drawer DD, Artesia, NM 88211-0719

DISTRICT III  
1000 Rio Brazos Rd., Aztec, NM 87410

DISTRICT IV  
P.O. BOX 2088, SANTA FE, N.M. 87504-2088

State of New Mexico  
Energy, Minerals and Natural Resources Dep

Form C-102  
Revised February 10, 1994  
Submit to Appropriate District Office  
State Lease - 4 Copies  
Fee Lease - 3 Copies

# OIL CONSERVATION DIVISION

P.O. Box 2088  
Santa Fe, New Mexico 87504-2088

☐ AMENDED REPORT

## WELL LOCATION AND ACREAGE DEDICATION PLAT

API Number <b>30-005-63117</b>	Pool Code <b>96656</b>	Pool Name <b>CHSIUM; SAN ANDRES SOUTH</b>
Property Code <b>19665</b>	Property Name <b>KATIE ELDER STATE</b>	Well Number <b>2</b>
OGRID No. <b>14049</b>	Operator Name <b>MARBOB ENERGY CORPORATION</b>	Elevation <b>3742</b>

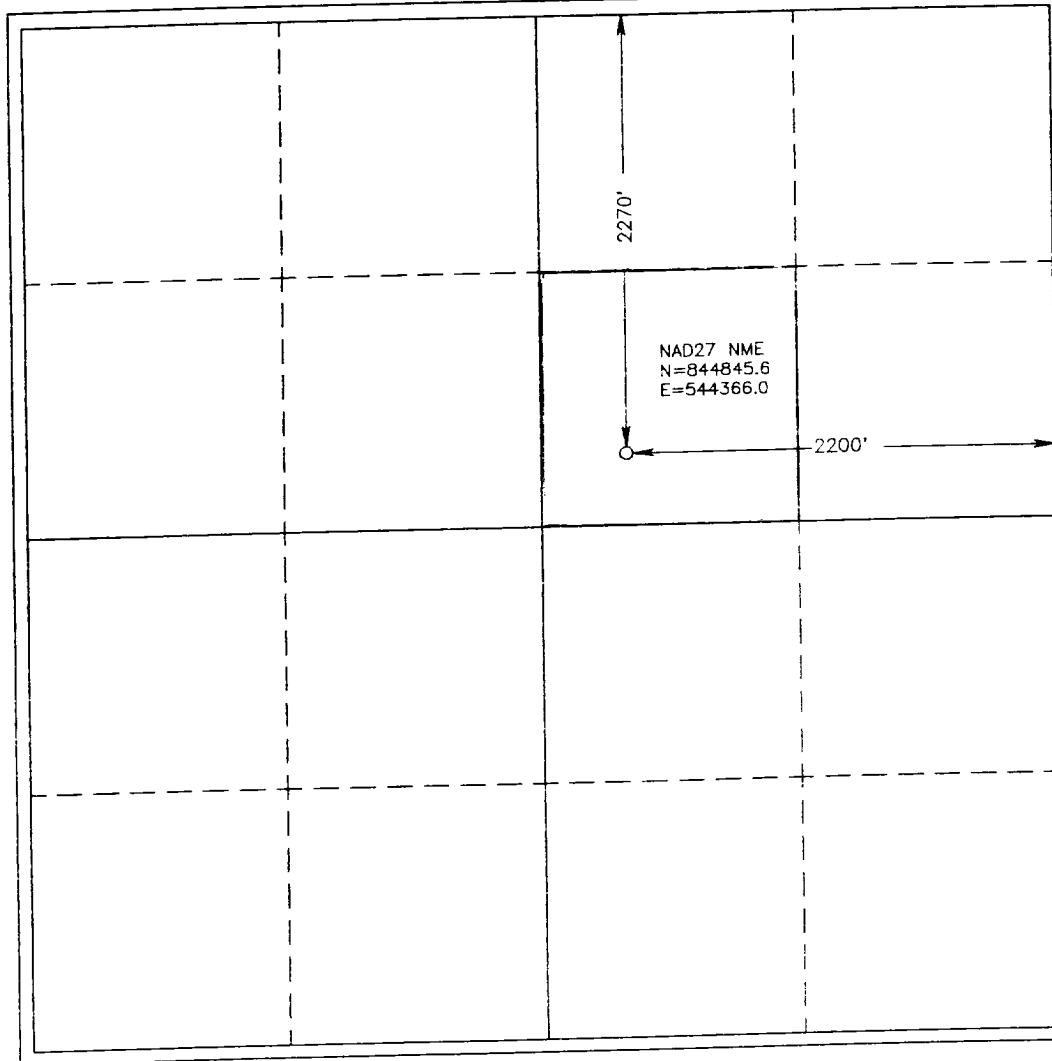
### Surface Location

UL or lot No.	Section	Township	Range	Lot Idn	Feet from the	North/South line	Feet from the	East/West line	County
<b>G</b>	<b>36</b>	<b>11 S</b>	<b>27 E</b>		<b>2270</b>	<b>NORTH</b>	<b>2200</b>	<b>EAST</b>	<b>CHAVES</b>

### Bottom Hole Location If Different From Surface

UL or lot No.	Section	Township	Range	Lot Idn	Feet from the	North/South line	Feet from the	East/West line	County
Dedicated Acres <b>40</b>	Joint or Infill	Consolidation Code	Order No.						

NO ALLOWABLE WILL BE ASSIGNED TO THIS COMPLETION UNTIL ALL INTERESTS HAVE BEEN CONSOLIDATED  
OR A NON-STANDARD UNIT HAS BEEN APPROVED BY THE DIVISION



### OPERATOR CERTIFICATION

I hereby certify the the information  
contained herein is true and complete to the  
best of my knowledge and belief

*Rhonda Nelson*  
Signature

**RHONDA NELSON**  
Printed Name

**PRODUCTION CLERK**  
Title

**JANUARY 22, 1997**  
Date

### SURVEYOR CERTIFICATION

I hereby certify that the well location shown  
on this plat was plotted from field notes of  
actual surveys made by me or under my  
supervision and that the same is true and  
correct to the best of my belief

**JANUARY 17, 1997**

Date Surveyed DSP

Signature  
Professional Surveyor

*Ronald G. Gibson*  
RONALD GIBSON  
97-11-0100

Certificate No. JOHN W. WEST 676  
RONALD GIBSON 3239  
GARY ROSEN 12641