

District I
P. O. Box 1980, Hobbs, NM 88241-1980
District II
P. O. Drawer DD, Artesia, NM 88211-0719
District III
1000 Rio Brazos Rd., Aztec, NM 87410
District IV
P. O. Box 2088, Santa Fe, NM 87504-2088

State of New Mexico
Energy, Minerals & Natural Resources Department

OIL CONSERVATION DIVISION
P. O. Box 2088
Santa Fe, NM 87504-2088

Form C-101

Revised February 10, 1994

Instructions on back

Submit to Appropriate District Office

State Lease - 6 Copies

Fee Lease - 5 Copies

☐ AMENDED REPORT

APPLICATION FOR PERMIT TO DRILL, RE-ENTER, DEEPEN, PLUGBACK, OR ADD A ZONE

¹ Operator Name and Address. Gothic Production Corporation 5727 S. Lewis, Tulsa, OK 74105 c/o J. O. Easley, Inc., P. O. Box 245, Artesia, NM 88211-0245		² OGRID Number 169650169680 163768
⁴ Property Code 23803	⁵ Property Name McClellan MOC Com	³ API Number 30-15 30-225-63179
		⁶ Well No. 15

⁷ Surface Location									
UL or lot no. N	Section 28	Township 5S	Range 25E	Lot Idn N	Feet from the 660'	North/South Line South	Feet from the 1980'	East/West line West	County Chaves

⁸ Proposed Bottom Hole Location If Different From Surface									
UL or lot no.	Section	Township	Range	Lot Idn	Feet from the	North/South Line	Feet from the	East/West line	County

⁹ Proposed Pool 1 Pecos Slope Abo (82730)	¹⁰ Proposed Pool 2
---	-------------------------------

¹¹ Work Type Code N	¹² Well Type Code G	¹³ Cable/Rotary Rotary	¹⁴ Lease Type Code P	¹⁵ Ground Level Elevation 3776'
¹⁶ Multiple No	¹⁷ Proposed Depth 4,050'	¹⁸ Formation Abo	¹⁹ Contractor	²⁰ Spud Date ASAP

²¹ Proposed Casing and Cement Program

Hole size	Casing Size	Casing weight/foot	Setting Depth	Sacks of Cement	Estimated TOC
17 1/2"	13 3/8"	48#	40'	To Surface	Post ID-1
12 1/4"	8 5/8"	24#	900'	550	10-16-98
7 7/8"	4 1/2"	10.5#	4050'	475	API & Loc
18 Hours WCC on 8 5/8" casing					

²² Describe the proposed program. If this application is to DEEPEN or PLUG BACK give the data on the present productive zone and proposed new productive zone. Describe the blowout prevention program, if any. Use additional sheets if necessary.

Exhibit "A" - C101
Exhibit "B" - Drilling Program
Exhibit "C" - BOP Layout

Notify NMOCC in sufficient
time to witness cementing
the 8 5/8" casing

²³ I hereby certify that the information given above is true and complete to the best of my knowledge and belief. Signature: <i>Michael R. Burch</i> Printed name: Michael R. Burch, CPL Title: Permit Agent for Gothic Production Corporation Date: 8-28-98		OIL CONSERVATION DIVISION Approved by: <i>Signer</i> Title: District Supervisor Approval Date: 10-13-98 Expiration Date: 10-13-99 Conditions of Approval: Attached <input type="checkbox"/>	
Phone: 505-746-1070			

RECEIVED
JAN 10 1964
U.S. DEPARTMENT OF AGRICULTURE
WASHINGTON, D.C.

1

DISTRICT I
P.O. Box 1980, Hobbs, NM 88241-1980

DISTRICT II
P.O. Drawer DD, Artesia, NM 88211-0719

DISTRICT III
1000 Rio Brazos Rd., Aztec, NM 87410

DISTRICT IV
P.O. BOX 2088, SANTA FE, N.M. 87504-2088

State of New Mexico
Energy, Minerals and Natural Resources Department

Form C-102
Revised February 10, 1994
Submit to Appropriate District Office
State Lease - 4 Copies
Fee Lease - 3 Copies

OIL CONSERVATION DIVISION
P.O. Box 2088
Santa Fe, New Mexico 87504-2088

☐ AMENDED REPORT

WELL LOCATION AND ACREAGE DEDICATION PLAT

API Number 30-15-	Pool Code 82730	Pool Name Pecos Slope Abo
Property Code	Property Name McCLELLAN MOC FEDERAL COM	Well Number 15
OGRID No. 169680	Operator Name GOTHIC ENERGY CORP.	Elevation 3776

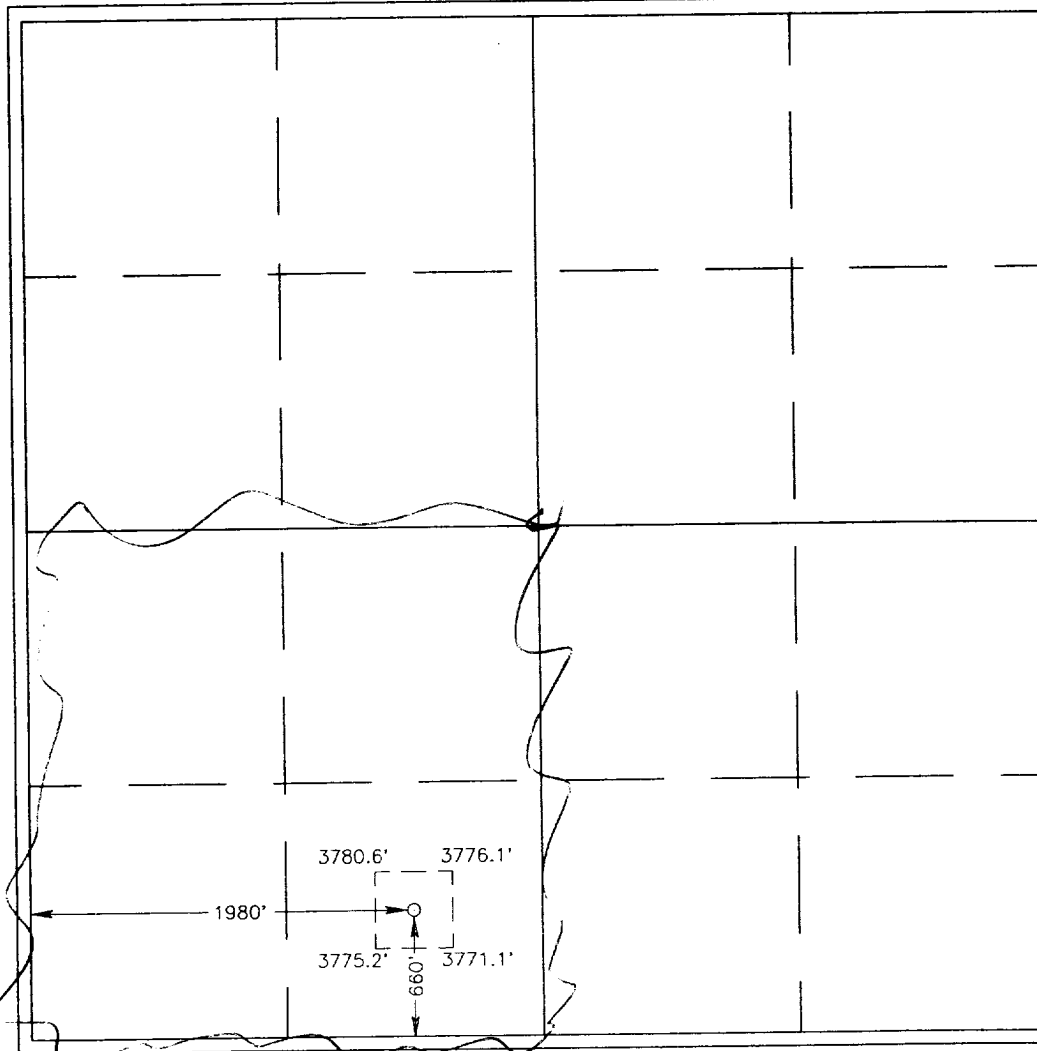
Surface Location

UL or lot No.	Section	Township	Range	Lot Idn	Feet from the	North/South line	Feet from the	East/West line	County
N	28	5 S	25 E		660	SOUTH	1980	WEST	CHAVES

Bottom Hole Location If Different From Surface

UL or lot No.	Section	Township	Range	Lot Idn	Feet from the	North/South line	Feet from the	East/West line	County
Dedicated Acres 160	Joint or Infill	Consolidation Code	Order No.						

NO ALLOWABLE WILL BE ASSIGNED TO THIS COMPLETION UNTIL ALL INTERESTS HAVE BEEN CONSOLIDATED
OR A NON-STANDARD UNIT HAS BEEN APPROVED BY THE DIVISION



OPERATOR CERTIFICATION

I hereby certify the the information
contained herein is true and complete to the
best of my knowledge and belief.

Michael R. Burch
Signature

Michael R. Burch, CPL

Printed Name Agent for

Gothic Energy Corporation

Title
8-28-98

Date

SURVEYOR CERTIFICATION

I hereby certify that the well location shown
on this plat was plotted from field notes of
actual surveys made by me or under my
supervision, and that the same is true and
correct to the best of my belief.

AUGUST 13, 1998

Date Surveyed DMCC

Signature & Seal of
Professional Surveyor

Ronald J. Gibson
RONALD J. GIBSON
8-19-98
88-11-11425

Certificate No. RONALD J. GIBSON 3239
GARY EIDSON 12641
MACON MCDONALD 12185

EXHIBIT "B"
McClellan MOC Com #15

DRILLING PROGRAM

I. The geological surface formation is recent Permian with quaternary alluvium and other surficial deposits.

II. Estimated Tops of Geological Markers:

<u>FORMATION</u>	<u>DEPTH</u>
San Andres	560'
Glorietta	1550'
Tubb	3000'
Abo	3640'
TD	4050'

III. Estimated depths at which water, oil, gas, or other mineral-bearing formations are expected to be encountered:

<u>SUBSTANCE</u>	<u>DEPTH</u>
Fresh Water	None anticipated
Oil	None anticipated
Gas	3700' (1 st gas)

IV. A. Proposed Casing Program:

<u>HOLE SIZE</u>	<u>CASING SIZE</u>	<u>GRADE</u>	<u>WEIGHT PER FOOT</u>	<u>DEP TH</u>
17 1/2"	13 3/8"	H-40	48#	40'
12 1/4"	8 5/8"	J-55	24#	900'
7 7/8"	4 1/2"	J-55	10.5#	4050'

B. Proposed Cement Program:

13 3/8"	Cement with Ready-Mix to surface.
8 5/8"	Cement with 350 sx Halliburton light with 2% CaCl ₂ and 200 sx Class "C" with 2% CaCl ₂ . Circulate to surface.
4 1/2"	Cement with 475 sx Class "C" 50/50 POZ, 2% Gel, 6# SaH, .3% CR2-2, .3% Hallno 4.

V. Proposed Mud Program:

Fresh water and natural mud to top of Abo @ 3640'. Mud up 100' above Abo with 15 cc water loss, 9.5# / gal mud weight and 35 viscosity mud.

VI. Proposed Control Equipment:

Will install Shaeffer type E 10" series 900 hydraulic BOP. See Exhibit "C" for BOP layout.

VII. Auxiliary Equipment:

Blowout preventor, gas detector, kelly cock, pit level monitor, flow sensors, and stabbing valve.

VIII A. Testing Program:

Drill Stem Tests: If necessary

B. Logging Program:

CNLD & Dual Lateral with Gamma Ray

C. Coring Program:

None planned

IX. No abnormal pressures or temperatures are anticipated. In the event abnormal pressures are encountered, however, the proposed mud program will be modified to increase the mud-weight.

X. H2S: None anticipated as none encountered in previously drilled wells in the vicinity.

