

District I
PO Box 1980, Hobbs, NM 88240-1980

District II
811 South First, Artesia, NM 88210

District III
1000 Rio Brazos Rd., Aztec, NM 87410

District IV
2040 South Pacheco, Santa Fe, NM 87505

State of New Mexico
Energy, Minerals & Natural Resources Department

Form C-101

Revised October 18, 1994

Instructions on back

Submit to Appropriate District Office

State Lease - 6 Copies

Fee Lease - 5 Copies

OIL CONSERVATION DIVISION

2040 South Pacheco

Santa Fe, NM 87505

☐ AMENDED REPORT

APPLICATION FOR PERMIT TO DRILL, RE-ENTER, DEEPEN, PLUGBACK, OR ADD A ZONE

| | | |
|---|--|----------------------------|
| Operator Name and Address HANAGAN PETROLEUM CORPORATION P.O. BOX 1737 ROSWELL, NEW MEXICO 88202-1737 | | OGRID Number 009911 |
| Property Code 23391 | | API Number 30-005-63189 |
| Property Name TWIN LAKES SAN ANDRES UNIT | | Well No. 326 |

Surface Location

| UL or lot no. | Section | Township | Range | Lot Idn | Feet from the | North/South line | Feet from the | East/West Line | County |
|---------------|---------|----------|-------|---------|---------------|------------------|---------------|----------------|--------|
| N | 31 | 8s | 29e | | 110 | SOUTH | 2410 | WEST | CHAVES |

Proposed Bottom Hole Location If Different From Surface

| UL or lot no. | Section | Township | Range | Lot Idn | Feet from the | North/South line | Feet from the | East/West Line | County |
|---|---------|----------|-------|---------|-----------------|------------------|---------------|----------------|--------|
| Proposed Pool 1 TWIN LAKES SAN ANDRES (ASSOCIATED) | | | | | Proposed Pool 2 | | | | |

| | | | | |
|---------------------|------------------------|-------------------------|----------------------------|--------------------------------|
| Work Type Code N | Well Type Code O | Cable/Rotary R | Lease Type Code P | Ground Level Elevation 4003 |
| Multiple No | Proposed Depth 3000 | Formation SAN ANDRES | Contractor UNITED DRLG. | Spud Date 11-18-98 |

Proposed Casing and Cement Program

| Hole Size | Casing Size | Casing weight/foot | Setting Depth | Sacks of Cement | Estimated TOC |
|-----------|-------------|--------------------|---------------|-----------------|---------------|
| 12.25" | 8.625" | 24 #/FT | 120' | 11yds Redi-Mix | SURFACE |
| 7.875" | 5.5" | 14 #/FT | 3000' | 1100sx | SURFACE |
| | | | | | |
| | | | | | |
| | | | | | |

Describe the proposed program. If this application is to DEEPEN or PLUG BACK give the data on the present productive zone and proposed new productive zone. Describe the blowout prevention program, if any. Use additional sheets if necessary.

Set 3jts of 24#/ft-8.625" casing in 12.25" hole to 120' (+/- 10') and cement with 11yds redi-mix - MIRU United Drilling, NU BOPE and drill 7.875" hole to TD - set 14-15.5 #/ft-5.5" casing to TD and cement with sufficient cement to circulate to surface (approx. 1100sx).
MIRU pulling unit, run GR-Neutron log and tie in log, perforate productive interval and acidize as necessary.

I hereby certify that the information given above is true and complete to the best of my knowledge and belief.

Signature: 

Printed name: Michael G. Hanagan

Title: President

Date: 11-12-98

Phone: 623-5053

OIL CONSERVATION DIVISION

Approved By:

ORIGINAL SIGNED BY TIM W. GUM
DISTRICT II SUPERVISOR

Title:

Approval Date:

11-18-98

Expiration Date:

11-18-99

Conditions of Approval:

Attached: ☐

DISTRICT I
P.O. Box 1980, Hobbs, NM 88241-1980

DISTRICT II
P.O. Drawer DD, Artesia, NM 88211-0719

DISTRICT III
1000 Rio Brazos Rd., Aztec, NM 87410

DISTRICT IV
P.O. BOX 2088, SANTA FE, N.M. 87504-2088

State of New Mexico
Energy, Minerals and Natural Resources Department

Form C-102
Revised February 10, 1994
Submit to Appropriate District Office
State Lease - 4 Copies
Fee Lease - 3 Copies

OIL CONSERVATION DIVISION

P.O. Box 2088
Santa Fe, New Mexico 87504-2088

☐ AMENDED REPORT

WELL LOCATION AND ACREAGE DEDICATION PLAT

| | | |
|---------------|--|--------------------|
| API Number | Pool Code | Pool Name |
| Property Code | Property Name TWIN LAKES SAN ANDRES UNIT | Well Number 326 |
| OGRID No. | Operator Name HANAGAN PETROLEUM CORPORATION | Elevation 4003' |

Surface Location

| | | | | | | | | | |
|---------------|---------|----------|-------|---------|---------------|------------------|---------------|----------------|--------|
| UL or lot No. | Section | Township | Range | Lot Idn | Feet from the | North/South line | Feet from the | East/West line | County |
| N | 31 | 8 S | 29 E | | 110 | SOUTH | 2410 | WEST | CHAVES |

Bottom Hole Location If Different From Surface

| | | | | | | | | | |
|-----------------|-----------------|--------------------|-----------|---------|---------------|------------------|---------------|----------------|--------|
| UL or lot No. | Section | Township | Range | Lot Idn | Feet from the | North/South line | Feet from the | East/West line | County |
| | | | | | | | | | |
| Dedicated Acres | Joint or Infill | Consolidation Code | Order No. | | | | | | |

NO ALLOWABLE WILL BE ASSIGNED TO THIS COMPLETION UNTIL ALL INTERESTS HAVE BEEN CONSOLIDATED
OR A NON-STANDARD UNIT HAS BEEN APPROVED BY THE DIVISION

| | | | | | | | | | |
|--------------------|--|--|--|--|--|--|--|--|--|
| LOT 1 38.75 AC. | | | | | | | | | |
| LOT 2 38.73 AC. | | | | | | | | | |
| LOT 3 38.74 AC. | | | | | | | | | |
| LOT 4 38.70 AC. | | | | | | | | | |

2410' 110'

OPERATOR CERTIFICATION

I hereby certify the the information contained herein is true and complete to the best of my knowledge and belief.

[Signature]
Signature
Michael G Hanagan
Printed Name
Resident
Title
11/12/98
Date

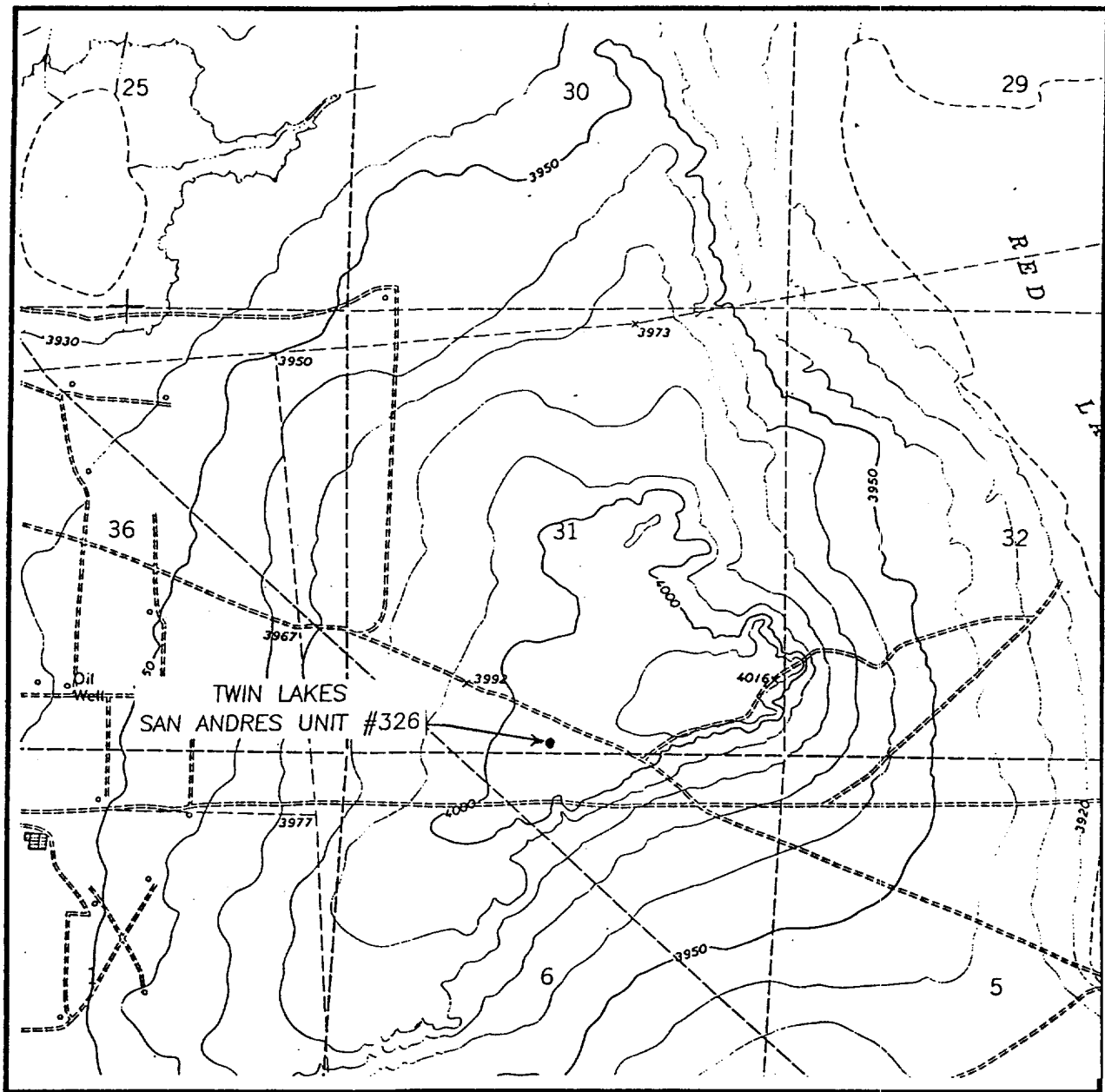
SURVEYOR CERTIFICATION

I hereby certify that the well location shown on this plat was plotted from field notes of actual surveys made by me or under my supervision, and that the same is true and correct to the best of my belief.

NOVEMBER 3, 1998

Date Surveyed
Signature & Seal
Professional Surveyor
NEW MEXICO
98-11-1420
Cert. No. RONALD S. EDSON 3239 12641

LOCATION VERIFICATION MAP



SCALE: 1" = 2000'

CONTOUR INTERVAL - 10'

SEC. 31 TWP. 8-S RGE. 29-E

SURVEY N.M.P.M.

COUNTY CHAVES

DESCRIPTION 110' FSL & 2410' FWL

ELEVATION 4003'

OPERATOR HANAGAN PETROLEUM CORPORATION

LEASE TWIN LAKES SAN ANDRES UNIT

U.S.G.S. TOPOGRAPHIC MAP

SARDINE LAKE, NM

**JOHN WEST SURVEYING CO.
HOBBS, NEW MEXICO**

(505) 393-3117