

# N. M. Oil Cons. Div.

811 S. 1ST ST.

ARTESIA, NM 88210-3804 (Other instructions on back side)

Form 3160-3  
(July 1992)

## UNITED STATES DEPARTMENT OF THE INTERIOR BUREAU OF LAND MANAGEMENT

FORM APPROVED  
OMB NO. 1004-0136  
Expires: February 28, 1995

### APPLICATION FOR PERMIT TO DRILL OR DEEPEN

1a. TYPE OF WORK

DRILL ☒

DEEPEN ☐

b. TYPE OF WELL

OIL WELL ☐

GAS WELL ☒

OTHER ☐

SINGLE ZONE ☐

MULTIPLE ZONE ☐

2. NAME OF OPERATOR

McKay Oil Corporation

3. ADDRESS AND TELEPHONE NO.

P.O. Box 2014, Roswell, NM 88201

(505) 623-4735

4. LOCATION OF WELL (Report location clearly and in accordance with any State requirements.)\*  
At surface

1740' FNL & 2350' FWL

At proposed prod. zone

14. DISTANCE IN MILES AND DIRECTION FROM NEAREST TOWN OR POST OFFICE\*

Approximately 25 miles north of Roswell, NM

15. DISTANCE FROM PROPOSED\*

LOCATION TO NEAREST  
PROPERTY OR LEASE LINE, FT.  
(Also to nearest drig. unit line, if any)

1740'

16. NO. OF ACRES IN LEASE

2560.00

17. NO. OF ACRES ASSIGNED  
TO THIS WELL

160.00

18. DISTANCE FROM PROPOSED LOCATION\*

TO NEAREST WELL, DRILLING, COMPLETED,  
OR APPLIED FOR, ON THIS LEASE, FT.

1100'

19. PROPOSED DEPTH

3000'

20. ROTARY OR CABLE TOOLS

Rotary

21. ELEVATIONS (Show whether DF, RT, GR, etc.)

4195' GL

22. APPROX. DATE WORK WILL START\*

September 9, 1998

23. PROPOSED CASING AND CEMENTING PROGRAM

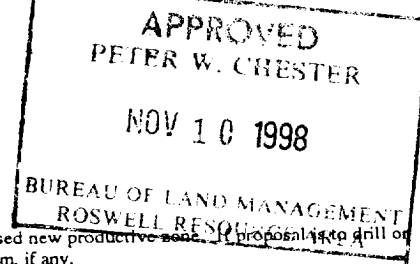
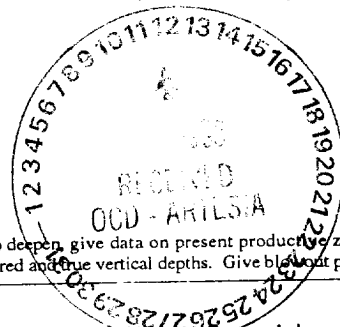
SIZE OF HOLE	GRADE SIZE OF CASING	WEIGHT PER FOOT	SETTING DEPTH	QUANTITY OF CEMENT
12 1/4"	8 5/8"	23 X-42	900+	800+ cf cemented & circulated
7 7/8"	4 1/2"	10.5 J-55	TD	1200 cf cemented

McKay Oil Corporation proposes to drill and test the ABO Formation. Approximately 900' of surface casing will be set and cemented to surface. If commercial, 4 1/2" production casing will be set and cemented with adequate cover, perforated and stimulated as needed for production.

MUD PROGRAM: See Supplemental Drilling Data which is attached.

BOP PROGRAM: BOP will be installed on 8 5/8" casing and tested daily.

Gas is not dedicated.



IN ABOVE SPACE DESCRIBE PROPOSED PROGRAM: If proposal is to deepen, give data on present productive zone and proposed new productive zone. If proposal is to drill or deepen directionally, give pertinent data on subsurface locations and measured and true vertical depths. Give blowout preventer program, if any.

24.

SIGNED

*Bill G. Milstead*

TITLE

Vice President

DATE

10/29/98

(This space for Federal or State office use)

PERMIT NO.

APPROVAL DATE

Application approval does not warrant or certify that the applicant holds legal or equitable title to those rights in the subject lease which would entitle the applicant to conduct operations thereon.  
CONDITIONS OF APPROVAL, IF ANY:

APPROVED BY

TITLE

DATE

\*See Instructions On Reverse Side

Title 18 U.S.C. Section 1001, makes it a crime for any person knowingly and willfully to make to any department or agency of the United States any false, fictitious or fraudulent statements or representations as to any matter within its jurisdiction.

# OIL CONSERVATION DIVISION

P.O. Box 2023  
Santa Fe, New Mexico 87504-2023

## DISTRICT I

P.O. Box 1980, Hobbs, NM 88240

## DISTRICT II

P.O. Drawer DD, Aztec, NM 88210

## DISTRICT III

1600 Rio Arriba Rd., Aztec, NM 87410

## WELL LOCATION AND ACREAGE DEDICATION PLAT

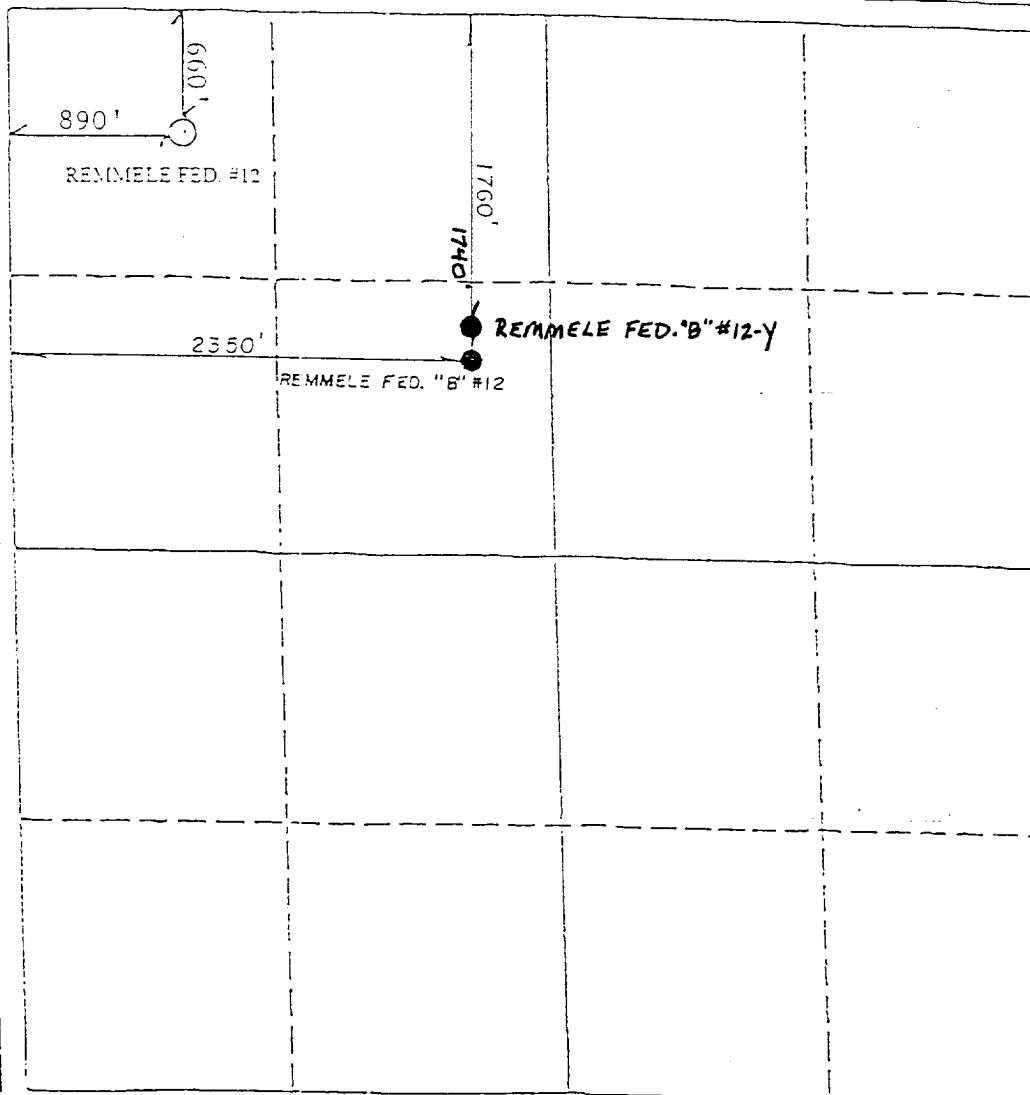
All Distances must be from the outer boundaries of the section

Operator <b>McKAY OIL CORP.</b>			Lease <b>REMMELE FED "B"</b>		Well No. <b>12-Y</b>
Well Letter <b>F</b>	Section <b>27</b>	Township <b>6S</b>	Range <b>22E</b>	County <b>CHAVES</b>	

Actual Footage Location of Well:

<b>1760 1740</b> feet from the <b>NORTH</b> line and <b>2350</b> feet from the <b>WEST</b> line			
Ground level Elev. <b>4195</b>	Producing Formation <b>ABO</b>	Pool <b>W. Pecos Slope Abo</b>	Dedicated Acreage <b>160</b> Acres

- Outline the acreage dedicated to the subject well by colored pencil or hatchure marks on the plat below.
- If more than one lease is dedicated to the well, outline each and identify the ownership thereof (both as to working interest and royalty).
- If more than one lease of different ownership is dedicated to the well, have the interest of all owners been consolidated by communitization, unitization, force-pooling, etc?  
☐ Yes ☐ No If answer is "yes" type of consolidation \_\_\_\_\_  
If answer is "no" list the owners and their descriptions which have actually been consolidated. (Use reverse side of this form if necessary.)  
No allowable will be assigned to the well until all interests have been consolidated (by communitization, unitization, force-pooling, or otherwise) or until a non-standard unit, eliminating such interests, has been approved by the Division.



### OPERATOR CERTIFICATION

I hereby certify that the information contained herein is true and complete to the best of my knowledge and belief.

Signature <i>Bill J. Milstead</i>
Printed Name <b>Bill J. Milstead</b>
Position <b>Vice President</b>
Company <b>McKay Oil Corporation</b>
Date <b>12-20-96</b>

### SURVEYOR CERTIFICATION

I hereby certify that the well location shown on this plat was plotted from field notes of actual surveys made by me or under my supervision, and that the same is true and correct to the best of my knowledge and belief.

Date <b>12-20-96</b>
Signature & Seal <i>Thom D. Atkins</i> <b>THOMAS D. ATKINS</b> <b>NEW MEXICO</b> <b>LAND SURVEYOR</b> <b>(2504)</b>
Certificate No. <b>LS 8504</b>