

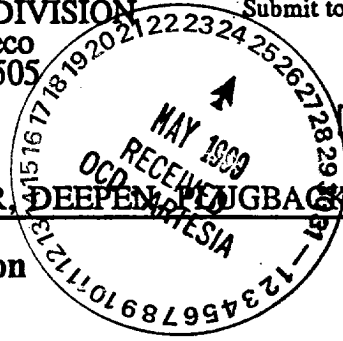
District I  
 PO Box 1980, Hobbs, NM 88241-1980  
 District II  
 811 South First, Artesia, NM 88210  
 District III  
 1000 Rio Brazos Rd., Aztec, NM 87410  
 District IV  
 2040 South Pacheco, Santa Fe, NM 87505

State of New Mexico  
 Energy, Minerals & Natural Resources Department

Form C-101  
 Revised October 18, 1994

OIL CONSERVATION DIVISION  
 2040 South Pacheco  
 Santa Fe, NM 87505

Submit to Appropriate District Office  
 State Lease - 6 Copies  
 Fee Lease - 5 Copies



AMENDED REPORT

APPLICATION FOR PERMIT TO DRILL, RE-ENTER, ~~DEEPEN~~ PLUG BACK, OR ADD A ZONE

<sup>1</sup> Operator Name and Address. <b>Yates Petroleum Corporation</b> 105 S. 4th Street Artesia, New Mexico 88210		<sup>2</sup> OGRID Number 025575
		<sup>3</sup> API Number 30-008-63208
<sup>4</sup> Property Code 24663	<sup>5</sup> Property Name Getty "PS" 17	<sup>6</sup> Well No. 2

<sup>7</sup> Surface Location

UL or lot no.	Section	Township	Range	Lot Ida	Feet from the	North/South line	Feet from the	East/West line	County
I	17	6S	26E		1980'	South	660'	East	Chaves

<sup>8</sup> Proposed Bottom Hole Location If Different From Surface

UL or lot no.	Section	Township	Range	Lot Ida	Feet from the	North/South line	Feet from the	East/West line	County
									Best ID-1
<sup>9</sup> Proposed Pool 1 Pecos Slope Abo 82730					<sup>10</sup> Proposed Pool 2 5-28-99 API & Loc				

<sup>11</sup> Work Type Code N	<sup>12</sup> Well Type Code G	<sup>13</sup> Cable/Rotary R	<sup>14</sup> Lease Type Code P	<sup>15</sup> Ground Level Elevation 3625'
<sup>16</sup> Multiple No	<sup>17</sup> Proposed Depth 4230'	<sup>18</sup> Formation Abo	<sup>19</sup> Contractor Undesignated	<sup>20</sup> Spud Date ASAP

Minimum WOC time | 8 hrs. <sup>21</sup> Proposed Casing and Cement Program

Hole Size	Casing Size	Casing weight/foot	Setting Depth	Sacks of Cement	Estimated TOC
12 3/4"	9 5/8"	36#	900'	400 sx	Circulate
8 3/4"	7" *	20#	1500'	350 sx	TOC 800'
7 7/8"	4 1/2"	10.5#	4230'	350 sx	500' above the Abo.

<sup>22</sup> Describe the proposed program. If this application is to DEEPEN or PLUG BACK give the data on the present productive zone and proposed new productive zone. Describe the blowout prevention program, if any. Use additional sheets if necessary.  
 Yates Petroleum Corporation proposes to drill and test the Abo and intermediate formations. Approximately 900' of surface casing will be set and cement circulated to the surface. \*(If lost circulation is encountered 8 5/8" casing will be set to approximately 1500'. Hole size will be reduced to 7 7/8"). If commercial, production casing will be run and cemented with adequate cover, perforated and stimulated as needed for production.

**MUD PROGRAM:** 0-900' FW Gel/Paper/LCM; 900'-1500' Brine; 1500'-3600' Brine; 3600'-TD Polyachrilamide.

**BOPE PROGRAM:** BOPE will be installed on the 9 5/8" casing and tested daily.

<sup>23</sup> I hereby certify that the information given above is true and complete to the best of my knowledge and belief.

Signature:

*Ken Beardemphl*

Printed name:

KEN BEARDEMPHL

Title:

LANDMAN

Date:

May 25, 1999

Phone:

505-748-4348

OIL CONSERVATION DIVISION

Approved by:

**ORIGINAL SIGNED BY TIM W. SUE**  
**DISTRICT II SUPERVISOR**

Title:

Approval Date:

5-26-99

Expiration Date:

5-26-00

Conditions of Approval:

Attached

**Notify N.M.O.C.C. in sufficient**

time to witness cementing

the 9 5/8" casing.

Call at Spud

chf  
 BLM  
 of

DISTRICT I  
P.O. Box 1980, Hobbs, NM 88240

State of New Mexico  
Energy, Minerals and Natural Resources Department

Form C-102  
Revised February 10, 1994  
Instruction on back  
Submit to Appropriate District Office  
State Lease - 4 Copies  
Fee Lease - 3 Copies

DISTRICT II  
P.O. Drawer DD, Artesia, NM 88210

OIL CONSERVATION DIVISION  
P.O. Box 2088  
Santa Fe, New Mexico 87504-2088

DISTRICT III  
1000 Rio Brazos Ed., Aztec, NM 87410

AMENDED REPORT

WELL LOCATION AND ACREAGE DEDICATION PLAT

API Number	Pool Code	Pool Name Pecos Slope Abo
Property Code	Property Name GETTY "PS" 17	Well Number 2
OGRID No. 025575	Operator Name YATES PETROLEUM CORPORATION	Elevation 3625

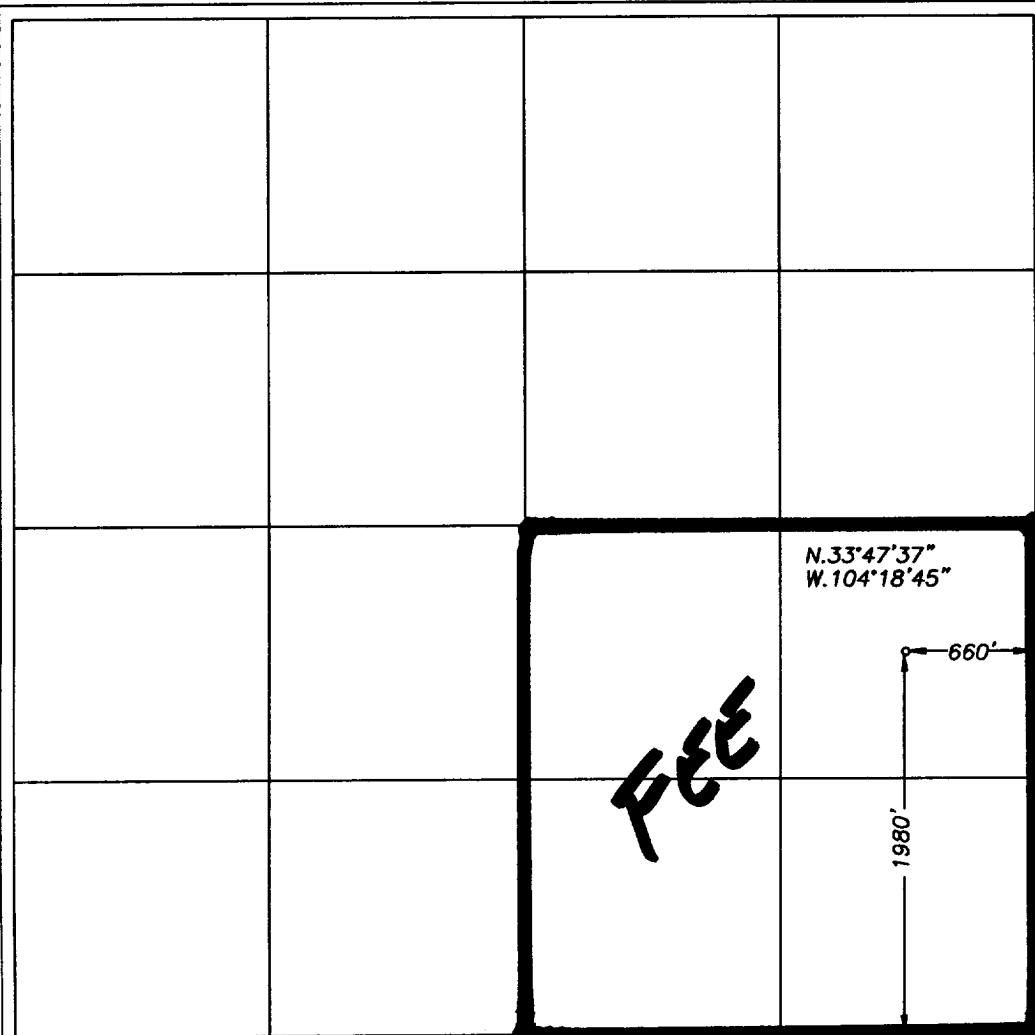
Surface Location

UL or lot No.	Section	Township	Range	Lot Idn	Feet from the	North/South line	Feet from the	East/West line	County
1	17	6S	26E		1980	SOUTH	660	EAST	CHAVES

Bottom Hole Location If Different From Surface

UL or lot No.	Section	Township	Range	Lot Idn	Feet from the	North/South line	Feet from the	East/West line	County
Dedicated Acres 160	Joint or Infill	Consolidation Code	Order No.						

NO ALLOWABLE WILL BE ASSIGNED TO THIS COMPLETION UNTIL ALL INTERESTS HAVE BEEN CONSOLIDATED  
OR A NON-STANDARD UNIT HAS BEEN APPROVED BY THE DIVISION



**OPERATOR CERTIFICATION**

I hereby certify the the information contained herein is true and complete to the best of my knowledge and belief.

*Ken Beardemphl*  
Signature

Ken Beardemphl  
Printed Name

Landman  
Title

May 25, 1999  
Date

---

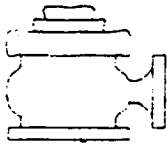
**SURVEYOR CERTIFICATION**

I hereby certify that the well location shown on this plat was plotted from field notes of actual surveys made by me or under my supervision, and that the same is true and correct to the best of my belief.

Date Surveyed  
Signature & Seal of Professional Surveyor  
3640

**MERSCHEL L. JONES**  
5106799  
REGISTERED PROFESSIONAL SURVEYOR  
STATE OF NEW MEXICO

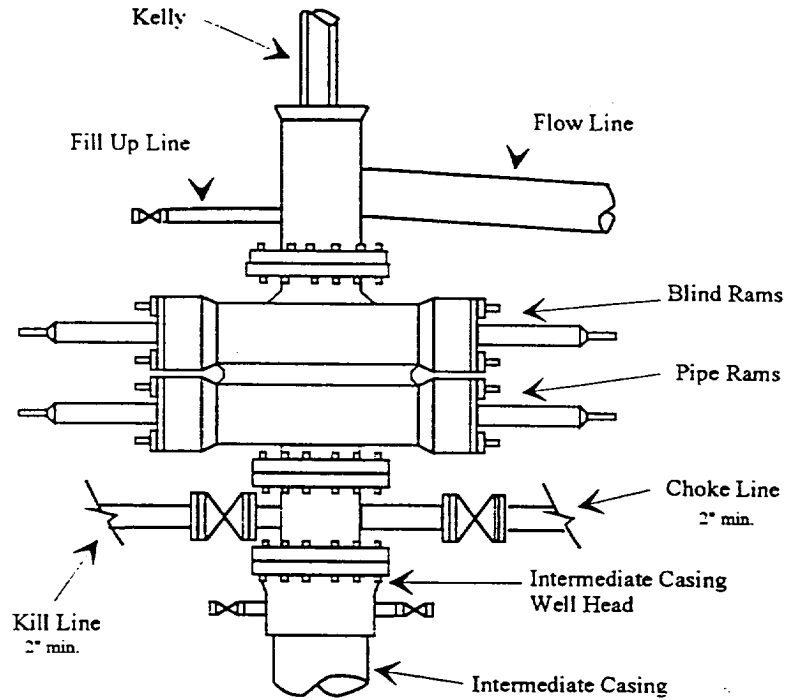
Certificate No. Merschel L. Jones RLS 3640  
GETTY17-2 DISK 12  
GENERAL SURVEYING COMPANY



# Yates Petroleum Corporation

BOP-2

## Typical 2,000 psi Pressure System Schematic Double Ram Preventer Stack



Typical 2,000 psi choke manifold assembly with at least these minimum features

