

FORM APPROVED
OMB NO. 1004-0136
Expires: February 28, 1995

Title 18 U.S.C. Section 1001, makes it a crime for any person knowingly and willfully to make to any department or agency of the United States any false, fictitious or fraudulent statements or representations as to any matter within its jurisdiction.



DISTRICT I
P.O. Box 1960, Hobbs, NM 88240

State of New Mexico
Energy, Minerals and Natural Resources Department

Form C-102
Revised February 10, 1994
Instruction on back
Submit to Appropriate District Office
State Lease - 4 Copies
Fee Lease - 3 Copies

DISTRICT II
P.O. Drawer DD, Artesia, NM 88210

OIL CONSERVATION DIVISION
P.O. Box 2088
Santa Fe, New Mexico 87504-2088

DISTRICT III
1000 Rio Brazos Rd., Aztec, NM 87410

☐ AMENDED REPORT

WELL LOCATION AND ACREAGE DEDICATION PLAT

API Number	Pool Code	Pool Name Pecos Slope Abo
Property Code	Property Name CROSBY "TV" FEDERAL	Well Number 2
OGRID No. 025577	Operator Name YATES PETROLEUM CORPORATION	Elevation 3627

Surface Location

UL or lot No. F	Section 15	Township 8S	Range 25E	Lot Idn	Feet from the 1610	North/South line NORTH	Feet from the 1980	East/West line WEST	County CHAVES
--------------------	---------------	----------------	--------------	---------	-----------------------	---------------------------	-----------------------	------------------------	------------------

Bottom Hole Location If Different From Surface

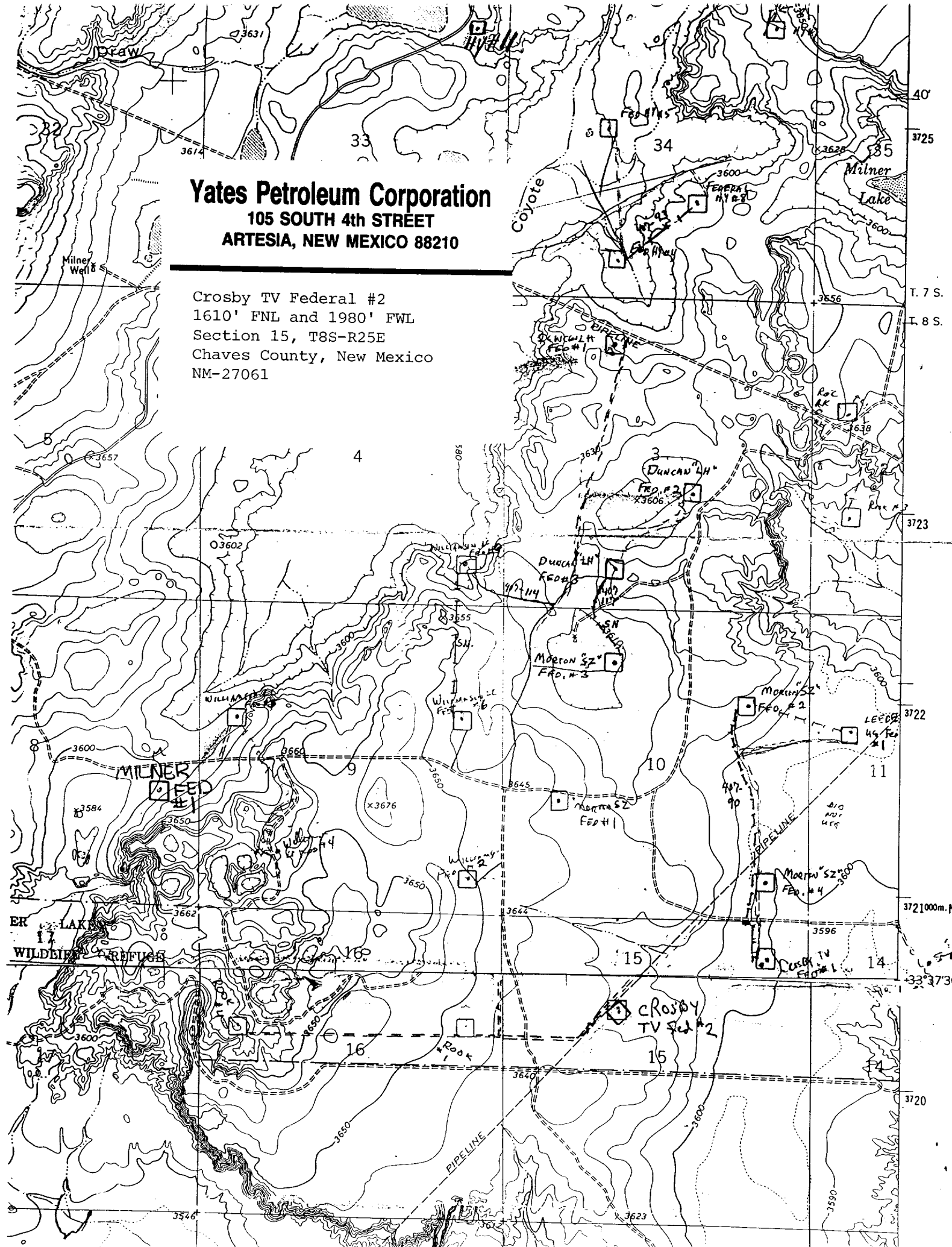
UL or lot No.	Section	Township	Range	Lot Idn	Feet from the	North/South line	Feet from the	East/West line	County
Dedicated Acres 160	Joint or Infill	Consolidation Code	Order No.						

NO ALLOWABLE WILL BE ASSIGNED TO THIS COMPLETION UNTIL ALL INTERESTS HAVE BEEN CONSOLIDATED
OR A NON-STANDARD UNIT HAS BEEN APPROVED BY THE DIVISION

				<p>OPERATOR CERTIFICATION</p> <p>I hereby certify the the information contained herein is true and complete to the best of my knowledge and belief.</p> <p>Signature: </p> <p>Printed Name: Ken Beardemphl</p> <p>Title: Landman</p> <p>Date: May 21, 1999</p>	
				<p>SURVEYOR CERTIFICATION</p> <p>I hereby certify that the well location shown on this plat was plotted from field notes of actual surveys made by me or under my supervision, and that the same is true and correct to the best of my belief.</p> <p>Date Surveyed: 5/15/99</p> <p>Signature: </p> <p>Professional Surveyor</p> <p>NEIS 3640</p> <p>Certified by: </p> <p>GENERAL SURVEYING COMPANY</p>	

Yates Petroleum Corporation
105 SOUTH 4th STREET
ARTESIA, NEW MEXICO 88210

Crosby TV Federal #2
1610' FNL and 1980' FWL
Section 15, T8S-R25E
Chaves County, New Mexico
NM-27061





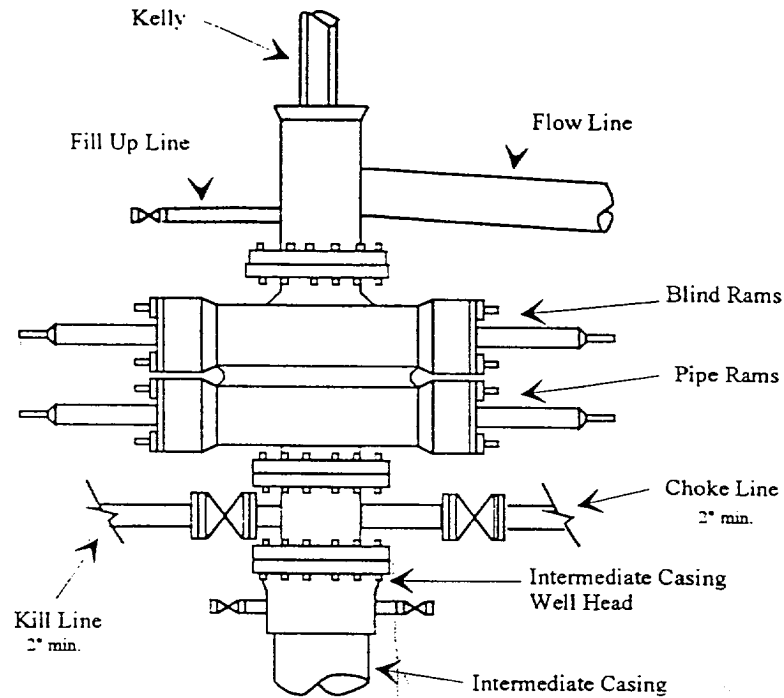
Yates Petroleum Corporation

BOP-2

Typical 2,000 psi Pressure System Schematic Double Ram Preventer Stack

Yates Petroleum Corporation
105 SOUTH 4th STREET
ARTESIA, NEW MEXICO 88210

Crosby TV Federal #2
1610' FNL and 1980' FWL
Section 15, T8S-R25E
Chaves County, New Mexico
NM-27061



Typical 2,000 psi choke manifold assembly with at least these minimum features

