

District I
PO Box 1980 Hobbs, NM 88241-1980

District II
811 South First, Artesia, NM 88210

District III
1000 Rio Brazos Rd., Aztec, NM 87410

District IV
2040 South Pacheco, Santa Fe, NM 87505

State of New Mexico
Energy, Minerals & Natural Resources Department

OIL CONSERVATION DIVISION
2040 South Pacheco
Santa Fe, NM 87505

Form C-101

Revised October 18, 1994

Instructions on back

Submit to Appropriate District Office

State Lease - 6 Copies

Fee Lease - 5 Copies

AMENDED REPORT

APPLICATION FOR PERMIT TO DRILL, RE-ENTER, DEEPEN, PLUG BACK OR ADD A ZONE

Operator Name and Address MARBOB ENERGY CORPORATION P.O. BOX 227 ARTESIA, NM 88210		OGRID Number 14049
Property Code 19665		API Number 30-005-63222
Property Name KATIE ELDER STATE		Well No. 4

Surface Location

UL or lot no.	Section	Township	Range	Lot lcn	Feet from the	North/South line	Feet from the	East/West Line	County
I	36	11S	27E		1980	SOUTH	990	EAST	CHAVES

Proposed Bottom Hole Location If Different From Surface

UL or lot no.	Section	Township	Range	Lot lcn	Feet from the	North/South line	Feet from the	East/West Line	County
Proposed Pool 1 CHISUM SAN ANDRES, SOUTH					Proposed Pool 2				

Work Type Code N	Well Type Code O	Cable/Rotary R	Lease Type Code S	Ground Level Elevation 3742
Multiple No	Proposed Depth 3000	Formation SAN ANDRES	Contractor UNITED	Spud Date 09-01-99

Minimum WOC time 8 hrs Proposed Casing and Cement Program

Hole Size	Casing Size	Casing weight/foot	Setting Depth	Sacks of Cement	Estimated TOC
12 1/4"	8 5/8"	24#/FT, J-55	250'	325 SX	SURF
7 7/8"	5 1/2"	17#/FT, J-55	2900'	100 SX	1400'
					Post ID-1
					8-27-99
					API & Loc

Describe the proposed program. If this application is to DEEPEN or PLUG BACK give the data on the present productive zone and proposed new productive zone. Describe the blowout prevention program, if any. Use additional sheets if necessary.

DRILL 12 1/4" HOLE TO 250' - SET 24#/FT J-55 8 5/8" CSG TO TD & CMT W/SUFFICIENT CMT TO CIRC CMT TO THE SURF (EST 175 SX), NU 3000# BOPE & DRILL 7 7/8" HOLE TO 2900', EITHER RUN 5 1/2" PRODUCTION TEST & STIMULATED AS NECESSARY OR PLUG & ABANDON AS PER NMOCD - ARTESIA ORDERS.

I hereby certify that the information given above is true and complete to the best of my knowledge and belief.

Signature:

Robin Cockrum

Printed name:

ROBIN COCKRUM

Title:

PRODUCTION ANALYST

Date:

08-23-99

Phone:

748-3303

OIL CONSERVATION DIVISION

Approved By:

ORIGINAL SIGNED BY TIM W. GUM

Title:

DISTRICT II SUPERVISOR

Approval Date:

8-24-99

Expiration Date:

8-24-00

Conditions of Approval:

Attached: ☐

DISTRICT I
P.O. Box 1980, Hobbs, NM 88241-1980

State of New Mexico
Energy, Minerals and Natural Resources Department

Form C-102
Revised February 10, 1994
Submit to Appropriate District Office
State Lease - 4 Copies
Fee Lease - 3 Copies

DISTRICT II
P.O. Drawer DD, Artesia, NM 88211-0719

DISTRICT III
1000 Rio Brazos Rd., Aztec, NM 87410

DISTRICT IV
P.O. BOX 2088, SANTA FE, N.M. 87504-2088

OIL CONSERVATION DIVISION

P.O. Box 2088
Santa Fe, New Mexico 87504-2088

☐ AMENDED REPORT

WELL LOCATION AND ACREAGE DEDICATION PLAT

API Number	Pool Code 96656	Pool Name SOUTH CHISUM SAN ANDRES
Property Code 19665	Property Name KATIE ELDER	Well Number 4
OGRID No. 14049	Operator Name MARBOB ENERGY CORPORATION	Elevation 3742

Surface Location

UL or lot No.	Section	Township	Range	Lot Idn	Feet from the	North/South line	Feet from the	East/West line	County
1	36	11 S	27 E		1980	SOUTH	990	EAST	CHAVES

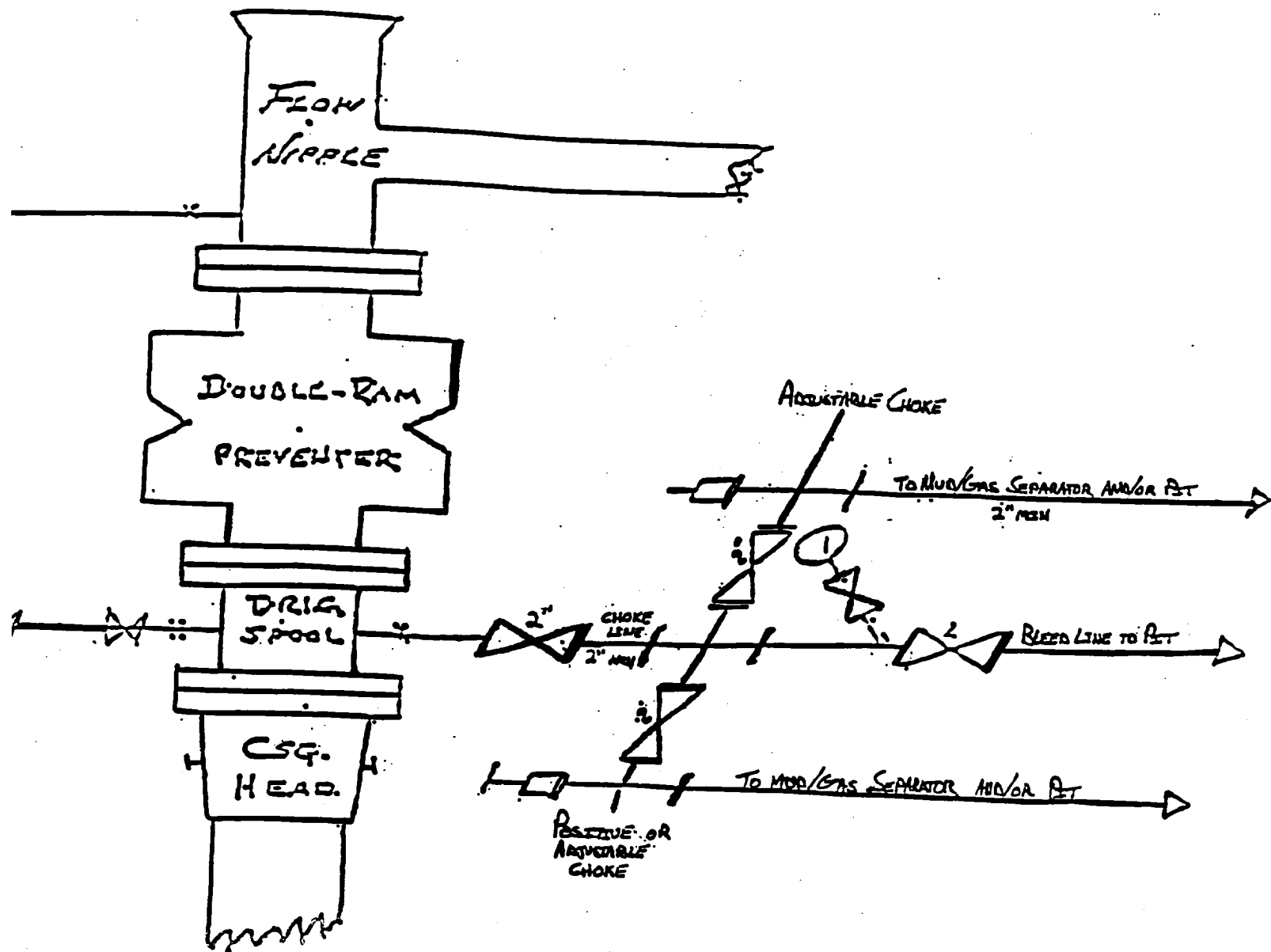
Bottom Hole Location If Different From Surface

UL or lot No.	Section	Township	Range	Lot Idn	Feet from the	North/South line	Feet from the	East/West line	County
Dedicated Acres 40	Joint or Infill	Consolidation Code	Order No.						

NO ALLOWABLE WILL BE ASSIGNED TO THIS COMPLETION UNTIL ALL INTERESTS HAVE BEEN CONSOLIDATED
OR A NON-STANDARD UNIT HAS BEEN APPROVED BY THE DIVISION

	OPERATOR CERTIFICATION I hereby certify the the information contained herein is true and complete to the best of my knowledge and belief. Signature ROBIN COCKRUM Printed Name PRODUCTION ANALYST Title 8/23/99 Date
	SURVEYOR CERTIFICATION I hereby certify that the well location shown on this plat was plotted from field notes of actual surveys made by me or under my supervision, and that the same is true and correct to the best of my belief. AUGUST 19, 1999 Date Surveyed DMCC Signature of Seal Professional Surveyor Certificate No. RONALD J. EDSON 3239 GARY EDSON 12641 RONALD J. EDSON 12185

BELOW WITHOUT PREVENTER AND CHOKE MANIFOLD



10"/900 Cameron SS Space Saver
3000# Working Pressure
3000# Working Pressure Choke Manifold