

District I  
PO Box 1980, Hobbs, NM 88241-1980  
District II  
811 South First, Artesia, NM 88210  
District III  
1000 Rio Brazos Rd., Aztec, NM 87410  
District IV  
2040 South Pacheco, Santa Fe, NM 87505

State of New Mexico  
Oil, Minerals & Natural Resources Department

OIL CONSERVATION DIVISION  
2040 South Pacheco  
Santa Fe, NM 87505

Form C-101  
Revised October 18, 1994  
Instructions on back  
Submit to Appropriate District Office  
State Lease - 6 Copies  
Fee Lease - 5 Copies

☐ AMENDED REPORT

APPLICATION FOR PERMIT TO DRILL, RE-ENTER, DEEPEN, PLUG BACK OR ADD A ZONE

<sup>1</sup> Operator Name and Address. YATES PETROLEUM CORPORATION 105 South Fourth Street Artesia, New Mexico 88210		<sup>2</sup> OGRID Number 025575
		<sup>3</sup> API Number 30-005-63232
<sup>4</sup> Property Code 12354	<sup>5</sup> Property Name Harvest ABR State	<sup>6</sup> Well No. 2

<sup>7</sup> Surface Location

UL or lot no.	Section	Township	Range	Lot Ida	Feet from the	North/South line	Feet from the	East/West line	County
C	36	9S	24E		660'	North	2139'	West	Chaves

<sup>8</sup> Proposed Bottom Hole Location If Different From Surface

UL or lot no.	Section	Township	Range	Lot Ida	Feet from the	North/South line	Feet from the	East/West line	County
<sup>9</sup> Proposed Pool 1 Pecos Slope Abo GAS 82730					<sup>10</sup> Proposed Pool 2				

<sup>11</sup> Work Type Code N	<sup>12</sup> Well Type Code G	<sup>13</sup> Cable/Rotary R	<sup>14</sup> Lease Type Code S	<sup>15</sup> Ground Level Elevation 3561'
<sup>16</sup> Multiple No	<sup>17</sup> Proposed Depth 3800'	<sup>18</sup> Formation Abo	<sup>19</sup> Contractor Undesignated	<sup>20</sup> Spud Date ASAP

Minimum WOC time 8 hrs. <sup>21</sup> Proposed Casing and Cement Program

Hole Size	Casing Size	Casing weight/foot	Setting Depth	Sacks of Cement	Estimated TOC
17 3/4"	8 5/8"	24#	900'	450 sx	Circulate Surface
7 7/8"	4.5"	10.5#	3800'	350 sx	TOC 2800'

<sup>22</sup> Describe the proposed program. If this application is to DEEPEN or PLUG BACK give the data on the present productive zone and proposed new productive zone. Describe the blowout prevention program, if any. Use additional sheets if necessary.

Yates Petroleum Corporation proposes to drill and test the Abo and intermediate formations. Approximately 900' of surface casing will be set and cement circulated to the surface. If commercial, production casing will be run and cemented with adequate cover, perforated and stimulated as needed for production.

MUD PROGRAM: 0-900' FW Gel/Paper/LCM; 900'-3350' Brine; 3350'-TD Polyachrilamide.

BOPE PROGRAM: BOPE will be installed on the 8 5/8" casing and tested daily for operational.

<sup>23</sup> I hereby certify that the information given above is true and complete to the best of my knowledge and belief.

Signature:

Printed name:

KEN BEARDEMPHL

Title:

LANDMAN

Date:

November 1, 1999

Phone:

505-748-4348

OIL CONSERVATION DIVISION

Approved by:

ORIGINAL SIGNED BY TIM W. GUM  
DISTRICT H SUPERVISOR

Approval Date:

2-7-00

Expiration Date:

2-7-01

Conditions of Approval:

Attached ☐

Notify OCD at SPUD & TIME  
to witness cementing the

8 5/8"

casing.

DISTRICT I  
P.O. Box 1980, Hobbs, NM 88240

DISTRICT II  
P.O. Drawer DD, Artesia, NM 88210

DISTRICT III  
1000 Rio Brazos Rd., Artec, NM 87410

State of New Mexico  
Energy, Minerals and Natural Resources Department

Form C-102  
Revised February 10, 1994  
Instruction on back  
Submit to Appropriate District Office  
State Lease - 4 Copies  
Fee Lease - 3 Copies

OIL CONSERVATION DIVISION  
P.O. Box 2088  
Santa Fe, New Mexico 87504-2088

☐ AMENDED REPORT

WELL LOCATION AND ACREAGE DEDICATION PLAT

API Number	Pool Code	Pool Name Pecos Slope Abo
Property Code	Property Name HARVEST "ABR" STATE	Well Number 2
OGRID No. 025575	Operator Name YATES PETROLEUM CORPORATION	Elevation 3561

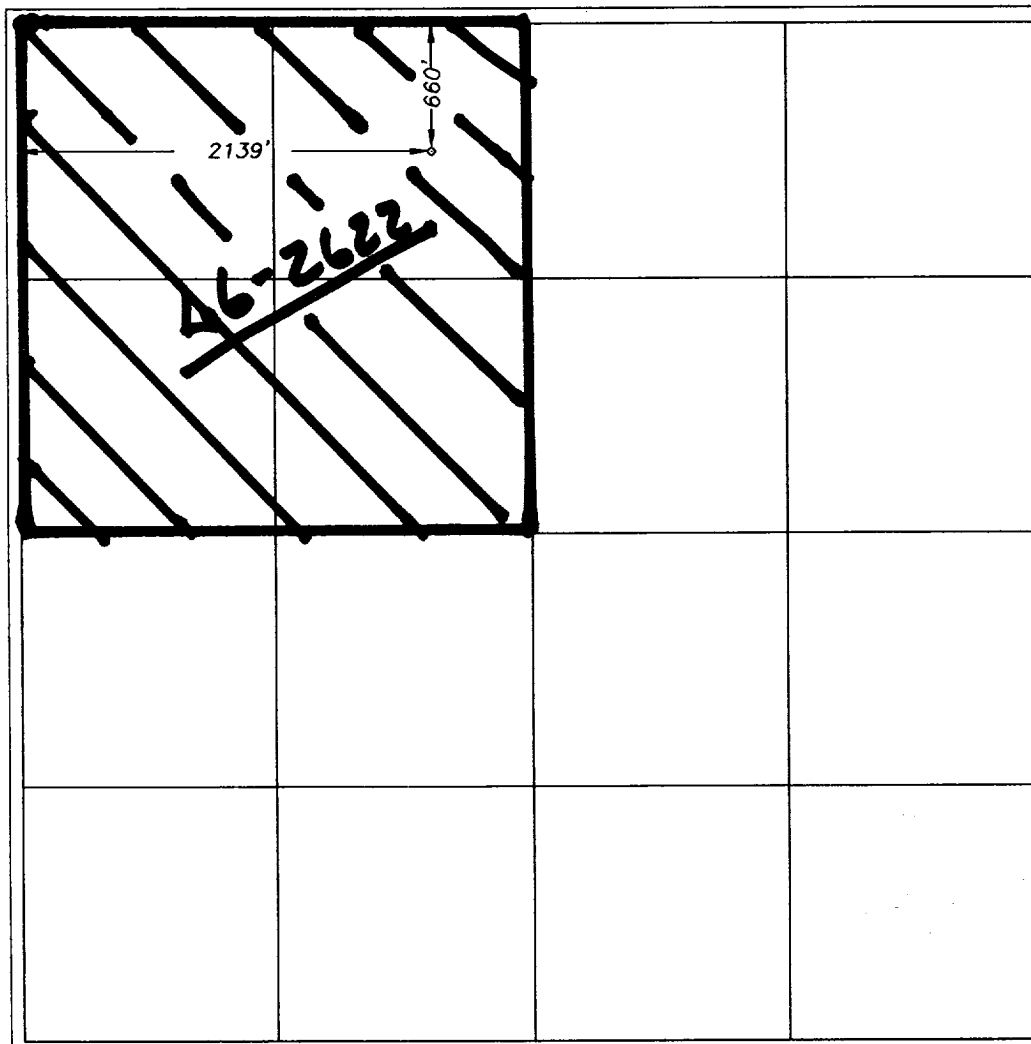
Surface Location

UL or lot No. C	Section 36	Township 9S	Range 24E	Lot Idn	Feet from the 660	North/South line NORTH	Feet from the 2139	East/West line WEST	County CHAVES
--------------------	---------------	----------------	--------------	---------	----------------------	---------------------------	-----------------------	------------------------	------------------

Bottom Hole Location If Different From Surface

UL or lot No.	Section	Township	Range	Lot Idn	Feet from the	North/South line	Feet from the	East/West line	County
Dedicated Acres 160	Joint or Infill	Consolidation Code	Order No.						

NO ALLOWABLE WILL BE ASSIGNED TO THIS COMPLETION UNTIL ALL INTERESTS HAVE BEEN CONSOLIDATED  
OR A NON-STANDARD UNIT HAS BEEN APPROVED BY THE DIVISION



OPERATOR CERTIFICATION

I hereby certify the the information  
contained herein is true and complete to the  
best of my knowledge and belief.

Signature

Ken Beardemphl  
Printed Name

Landman  
Title

November 1, 1999  
Date

SURVEYOR CERTIFICATION

I hereby certify that the well location shown  
on this plat was plotted from field notes of  
actual surveys made by me or under my  
supervision, and that the same is true and  
correct to the best of my belief.

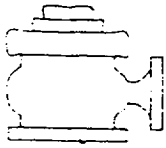
10/28/99  
Date Surveyed

Signature & Seal of  
Professional Surveyor

3640

H. H. Jones

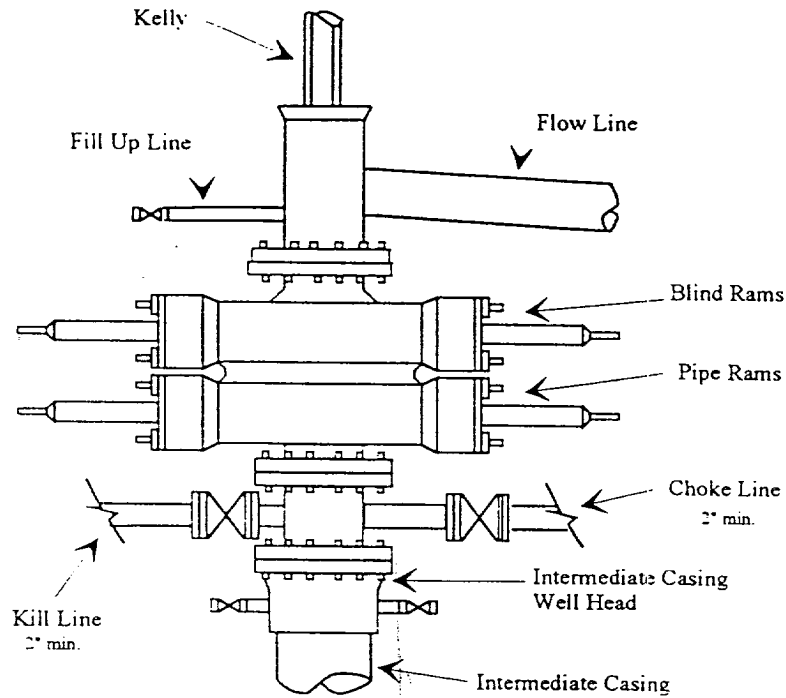
Certificate No. H. H. Jones RLS 3640  
DISK 16  
GENERAL SURVEYING COMPANY



# Yates Petroleum Corporation

BOP-2

## Typical 2,000 psi Pressure System Schematic Double Ram Preventer Stack



Typical 2,000 psi choke manifold assembly with at least these minimum features

