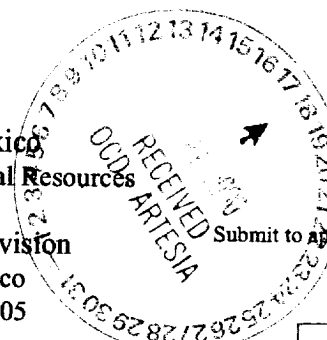


District I
1625 N. French Dr., Hobbs, NM 88240
District II
811 South First, Artesia, NM 88210
District III
1000 Rio Brazos Road, Aztec, NM 87410
District IV
2040 South Pacheco, Santa Fe, NM 87505

State of New Mexico
Energy Minerals and Natural Resources

Oil Conservation Division
2040 South Pacheco
Santa Fe, NM 87505



Form C-100
Revised March 17, 1999

Submit to appropriate District Office
State Lease - 6 Copies
Fee Lease - 5 Copies

☐ AMENDED REPORT

APPLICATION FOR PERMIT TO DRILL, RE-ENTER, DEEPEN, PLUGBACK, OR ADD A ZONE

¹ Operator Name and Address Reliance Energy, Inc. P.O. Box 10946, Midland, Texas 79702		² OGRID Number 149441
⁴ Property Code 25901	⁵ Property Name Willow Spring "34" State	³ API Number 30 - 005 - 63251
		⁶ Well No. 1

⁷ Surface Location

UL or lot no.	Section	Township	Range	Lot Idn	Feet from the	North/South line	Feet from the	East/West line	County
F	34	4S	25E		1980	North	1980	West	Chaves

⁸ Proposed Bottom Hole Location If Different From Surface

UL or lot no.	Section	Township	Range	Lot Idn	Feet from the	North/South line	Feet from the	East/West line	County
⁹ Proposed Pool 1 Pecos Slope Abo					¹⁰ Proposed Pool 2				

¹¹ Work Type Code N	¹² Well Type Code G	¹³ Cable Rotary R	¹⁴ Lease Type Code S	¹⁵ Ground Level Elevation 3786'
¹⁶ Multiple N	¹⁷ Proposed Depth 4250'	¹⁸ Formation Abo	¹⁹ Contractor United Drilg	²⁰ Spud Date June 15, 2000

²¹ Proposed Casing and Cement Program

Hole Size	Casing Size	Casing weight/foot	Setting Depth	Sacks of Cement	Estimated TOC
14-3/4"	11-3/4"	38#	800'	350	surface
11"	8-5/8"	24#	1800'	350	1200'
7-7/8"	5-1/2"	15.5#	4250'	350	3250'

²² Describe the proposed program. If this application is to DEEPEN or PLUG BACK, give the data on the present productive zone and proposed new productive zone.
Describe the blowout prevention program, if any. Use additional sheets if necessary. Approximately 800' surface casing will be set and cemented to shut off gravel. 11" hole will be air drilled with intermediate casing set at 1800'. 7-7/8" hole will be air drilled to TD @ 4250'. Production casing will be set at TD and cemented. The Abo will be stimulated as needed.

BOP Program: 1000 psi annular preventor will be installed on 8-5/8"; rotating head used while air drilling.

²³ I hereby certify that the information given above is true and complete to the best of my knowledge and belief. Signature: <u>Clyde C. Wheeler</u> Printed name: <u>CLYDE C. WHEELER</u> Title: <u>Petroleum Engineer</u> Date: <u>5-15-00</u>		<p>OIL CONSERVATION DIVISION</p> <p>Approved by: ORIGINAL SIGNED BY TIM W. GUM Box DISTRICT II SUPERVISOR</p> <p>Title:</p> <p>Approval Date: <u>MAY 18 2000</u> Expiration Date: <u>MAY 18 2001</u> Conditions of Approval: <u>Notify OCD at SPUD & TIME to witness cementing the 11 3/4" casing.</u></p> <p>Attached <input type="checkbox"/></p>	
Phone: <u>(915) 683-4816</u>			

DISTRICT I
P. O. Box 1980
Hobbs, NM 88241-1980

State of New Mexico
Energy, Minerals, and Natural Resources Department

Form C-102
Revised 02-10-94

Instructions on back

DISTRICT II
P. O. Drawer DD
Artesia, NM 88211-0719

OIL CONSERVATION DIVISION
P. O. Box 2088
Santa Fe, New Mexico 87504-2088

Submit to the Appropriate
District Office
State Lease - 4 copies
Fee Lease - 3 copies

☐ AMENDED REPORT

DISTRICT III
1000 Rio Brazos Rd.
Aztec, NM 87410

DISTRICT IV
P. O. Box 2088
Santa Fe, NM 87507-2088

WELL LOCATION AND ACREAGE DEDICATION PLAT

1 API Number		2 Pool Code		3 Pool Name Pecos Slope Abo			
4 Property Code		5 Property Name WILLOW SPRING '34' STATE				6 Well Number 1	
7 OGRID No. 149441		8 Operator Name RELIANCE ENERGY INCORPORATED				9 Elevation 3786'	

10 SURFACE LOCATION

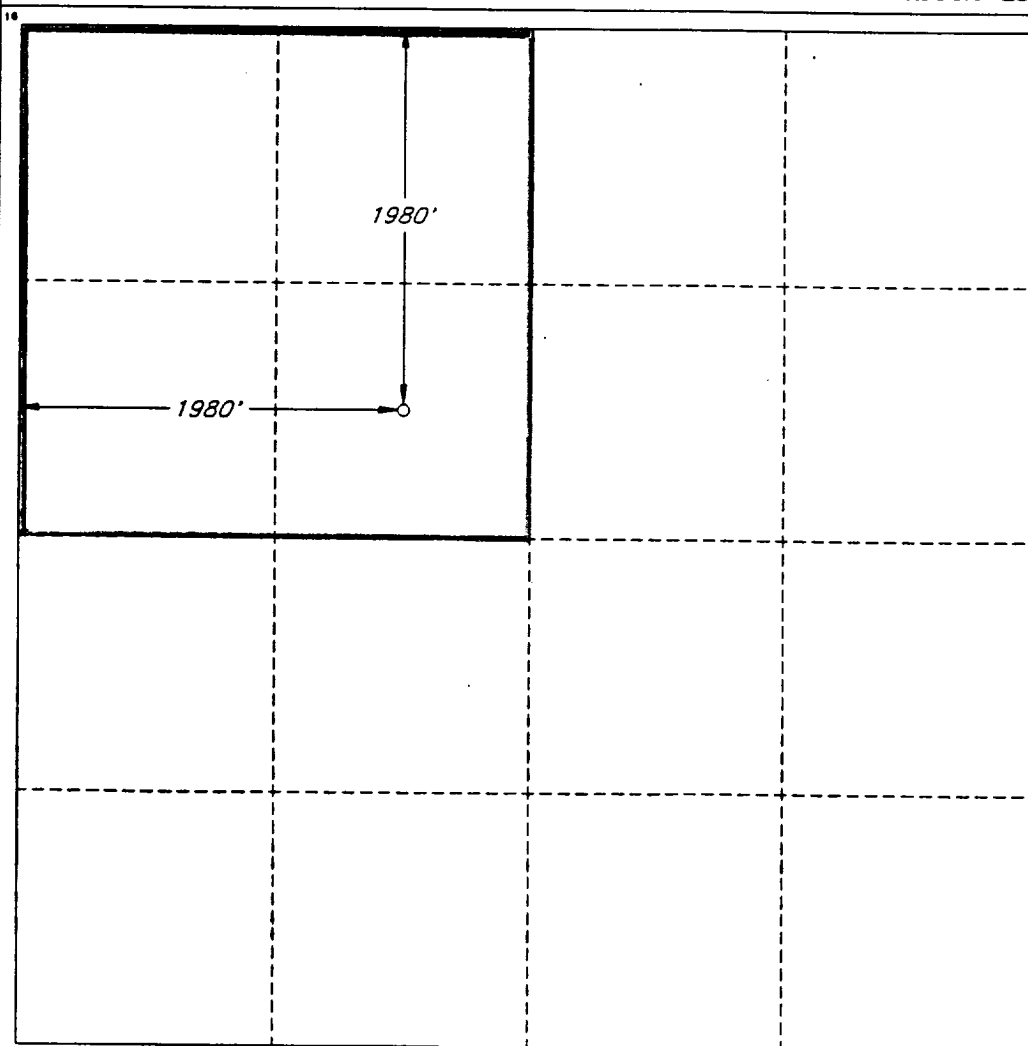
UL or lot no. F	Section 34	Township 4 SOUTH	Range 25 EAST, N.M.P.M.	Lot Ida	Feet from the 1980'	North/South line NORTH	Feet from the 1980'	East/West line WEST	County CHAVES
--------------------	---------------	---------------------	----------------------------	---------	------------------------	---------------------------	------------------------	------------------------	------------------

"BOTTOM HOLE LOCATION IF DIFFERENT FROM SURFACE

UL or lot no.	Section	Township	Range	Lot Ida	Feet from the	North/South line	Feet from the	East/West line	County
---------------	---------	----------	-------	---------	---------------	------------------	---------------	----------------	--------

12 Dedicated Acres 160.0	13 Joint or Infill N	14 Consolidation Code	15 Order No.
-----------------------------	-------------------------	-----------------------	--------------

NO ALLOWABLE WELL BE ASSIGNED TO THIS COMPLETION UNTIL ALL INTERESTS HAVE BEEN CONSOLIDATED OR A NON-STANDARD UNIT HAS BEEN APPROVED BY THE DIVISION



OPERATOR CERTIFICATION

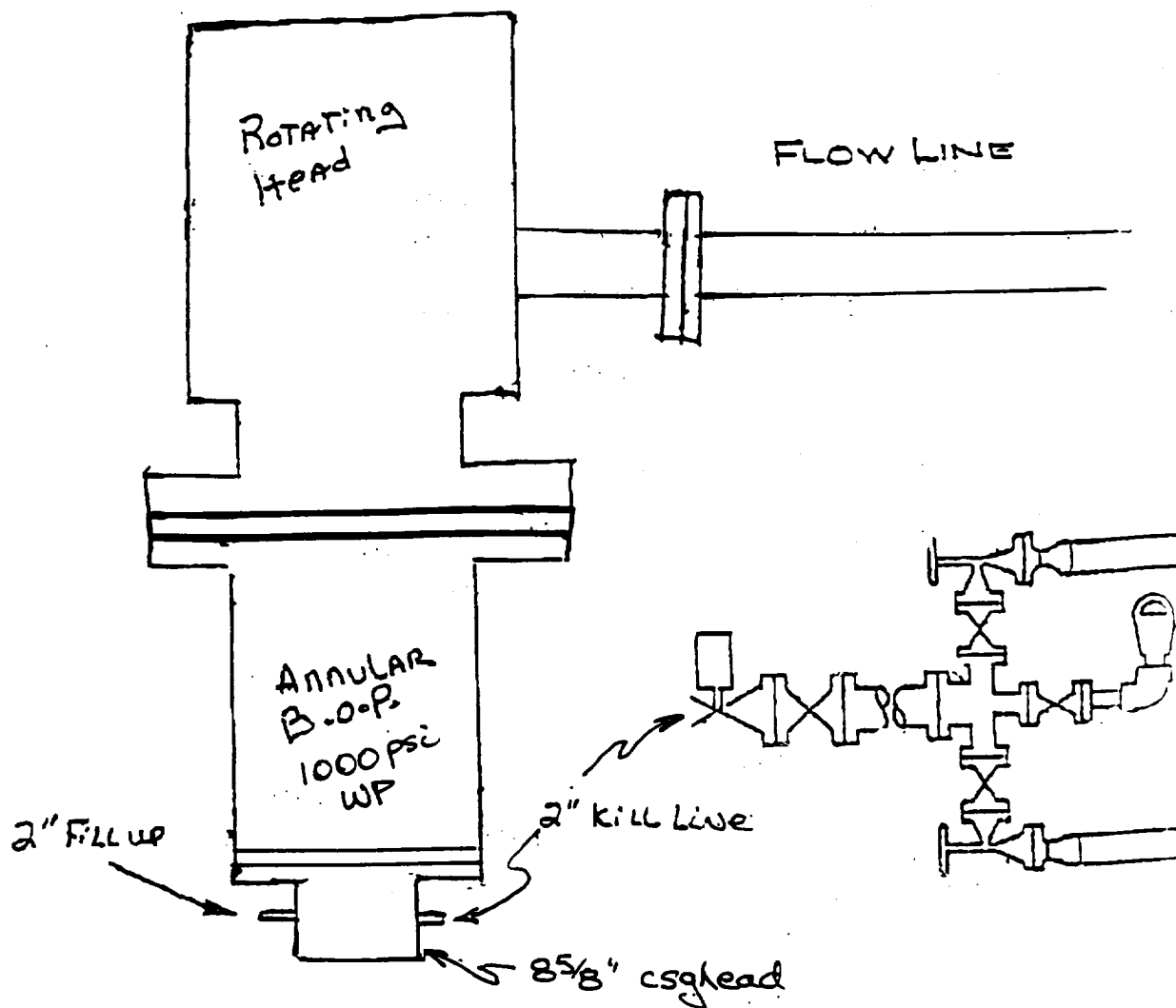
I hereby certify that the information contained herein is true and complete to the best of my knowledge and belief.

Signature
Clyde C. Wheeler
Printed Name
CLYDE C. WHEELER
Title
Petroleum Engineer
Date
5-15-00

SURVEYOR CERTIFICATION

I hereby certify that the well location shown on this plat was plotted from field notes of actual surveys made by me or under my supervision, and that the same is true and correct to the best of my belief.

Date of Survey
MAY 3, 2000
Signature and Seal of Professional Surveyor
V. L. BEZNER 5-4-2000
Certificate No.
V. L. BEZNER R.P.S. #7920
JOB #68944 / 200 NE / V.H.B.



Reliance Energy, Inc.
Willow Spring" 34" State No. 1
Chaves County, NM.

CCW 5/15/00