

0147  
BLM  
SL  
OP

District I  
1625 N. French Dr., Hobbs, NM 88240  
District II  
811 South First, Artesia, NM 88210  
District III  
1000 Rio Brazos Road, Aztec, NM 87410  
District IV  
2040 South Pacheco, Santa Fe, NM 87505

State of New Mexico  
Energy Minerals and Natural Resources

Oil Conservation Division  
2040 South Pacheco  
Santa Fe, NM 87505

Form C-101  
Revised March 17, 1999

Submit to appropriate District Office  
State Lease - 6 Copies  
Fee Lease - 5 Copies

☐ AMENDED REPORT

**APPLICATION FOR PERMIT TO DRILL, RE-ENTER, DEEPEN, PLUGBACK, OR ADD A ZONE**

|  |  |   |
|--|--|---|
| <sup>1</sup> Operator Name and Address<br>Reliance Energy, Inc.<br>P. O. Box 10946, Midland, Texas |  | <sup>2</sup> OGRID Number<br>149441         |
|  |  | <sup>3</sup> API Number<br>30 - 00S - 63263 |
| <sup>4</sup> Property Code<br>26232  | <sup>5</sup> Property Name<br>Willow Spring "27" State | <sup>6</sup> Well No.<br>1                  |

| <sup>7</sup> Surface Location |         |          |       |         |               |                  |               |                |        |
|-------------------------------|---------|----------|-------|---------|---------------|------------------|---------------|----------------|--------|
| UL or lot no.                 | Section | Township | Range | Lot Idn | Feet from the | North/South line | Feet from the | East/West line | County |
| L                             | 27      | 4S       | 25E   |         | 1980          | South            | 660           | West           | Chaves |

| <sup>8</sup> Proposed Bottom Hole Location If Different From Surface |         |          |       |         |                               |                  |               |                |        |
|--|---------|----------|-------|---------|-------------------------------|------------------|---------------|----------------|--------|
| UL or lot no.  | Section | Township | Range | Lot Idn | Feet from the                 | North/South line | Feet from the | East/West line | County |
| <sup>9</sup> Proposed Pool 1<br>Undes.<br>Pecos Slope Abo            |         |          |       |         | <sup>10</sup> Proposed Pool 2 |                  |               |                |        |

|                                   |                                      |                                 |  |  |
|-----------------------------------|--------------------------------------|---------------------------------|--|--|
| <sup>11</sup> Work Type Code<br>N | <sup>12</sup> Well Type Code<br>G    | <sup>13</sup> Cable Rotary<br>R | <sup>14</sup> Lease Type Code<br>S       | <sup>15</sup> Ground Level Elevation<br>3797 |
| <sup>16</sup> Multiple<br>N       | <sup>17</sup> Proposed Depth<br>4250 | <sup>18</sup> Formation<br>Abo  | <sup>19</sup> Contractor<br>United Drlg. | <sup>20</sup> Spud Date<br>August 1, 2000    |

**Minimum WOC time 18 hrs. <sup>21</sup> Proposed Casing and Cement Program**

| Hole Size | Casing Size | Casing weight/foot | Setting Depth | Sacks of Cement | Estimated TOC |
|-----------|-------------|--------------------|---------------|-----------------|---------------|
| 14-3/4"   | 11-3/4"     | 38#                | 800'          | 350 sxs         | surface       |
| 11"       | 8-5/8"      | 24#                | 1800'         | 350 sxs         | 1200'         |
| 7-7/8"    | 5-1/2"      | 15.5#              | 4250'         | 250 sxs         | 3000'         |

Cement to cover all oil, gas & water bearing zones. Abo

<sup>22</sup> Describe the proposed program. If this application is to DEEPEN or PLUG BACK, give the data on the present productive zone and proposed new productive zone.

Describe the blowout prevention program, if any. Use additional sheets if necessary. Approximately 800' surface casing will be set and cemented to shut off gravel. 11" hole will be air drilled with intermediate casing set at 1800'. 7-7/8" hole will be air drilled to TD @ 4250'. Production casing will be set at TD and cemented. The Abo will be stimulated as needed.

BOP Program: 1000 psi annular preventor will be installed on 8-5/8"; rotating head used while air drilling.

|  |                       |   |  |
|--|-----------------------|---|--|
| <sup>23</sup> I hereby certify that the information given above is true and complete to the best of my knowledge and belief. |                       | OIL CONSERVATION DIVISION   |  |
| Signature: <u>Clyde C. Wheeler</u>   |                       | Approved by: <b>ORIGINAL SIGNED BY TIM W. GUM</b> B64                 |  |
| Printed name: Clyde C. Wheeler   |                       | Title: <b>DISTRICT II SUPERVISOR</b>                                  |  |
| Title: Petroleum Engineer  |                       | Approval Date: <b>JUL 12 2000</b> Expiration Date: <b>JUL 12 2001</b> |  |
| Date: 7-11-2000  | Phone: (915) 683-4816 | Notify OGD at SPUD & TIME to witness cementing the casing.            |  |
|  |                       | Attached <input type="checkbox"/>                                     |  |

113/4"

188. 2000 2000 1970 200 10 10 1900 20 2000 20

DISTRICT I  
P. O. Box 1980  
Hobbs, NM 88241-1980

State of New Mexico  
Energy, Minerals, and Natural Resources Department

Form C-102  
Revised 02-10-94

Instructions on back

DISTRICT II  
P. O. Drawer DD  
Artesia, NM 88211-0719

DISTRICT III  
1000 Rio Brazos Rd.  
Aztec, NM 87410

DISTRICT IV  
P. O. Box 2088  
Santa Fe, NM 87507-2088

OIL CONSERVATION DIVISION

P. O. Box 2088  
Santa Fe, New Mexico 87504-2088

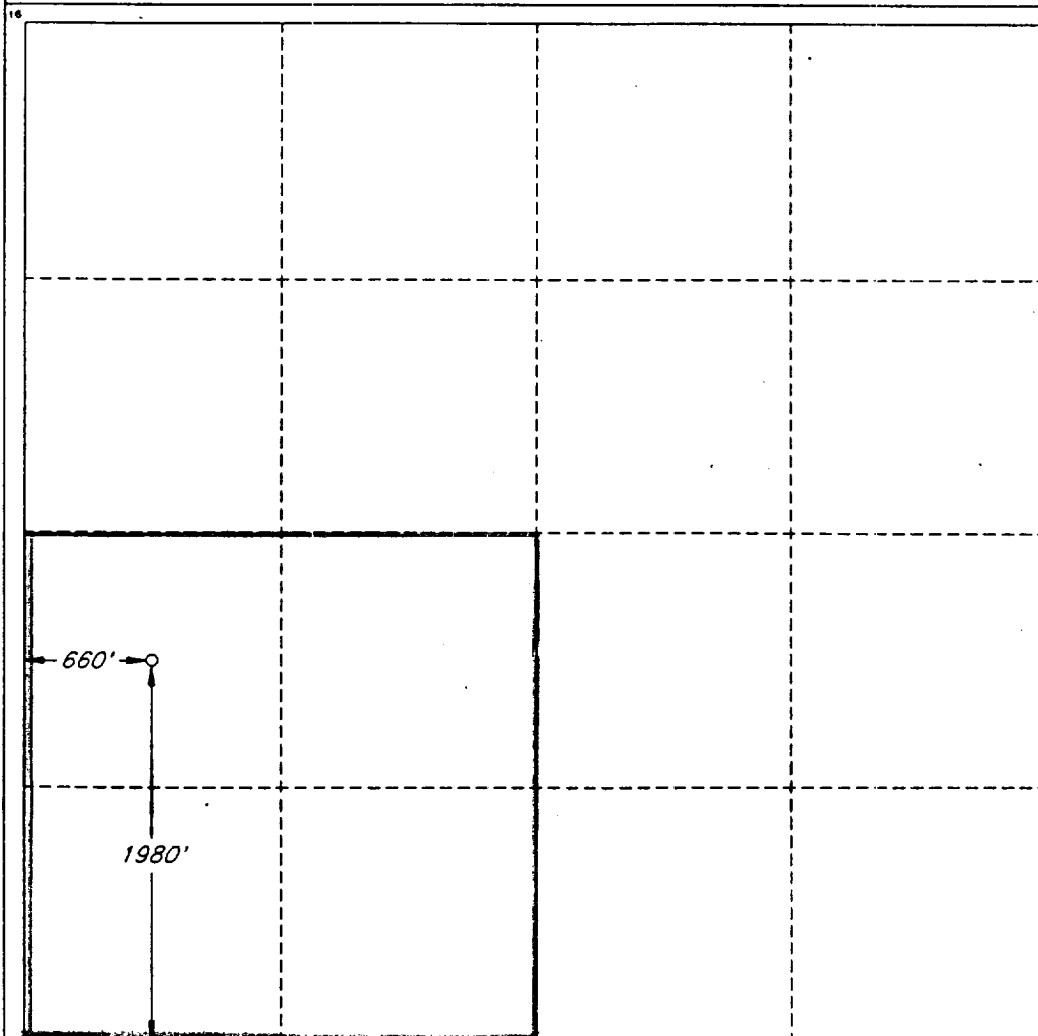
Submit to the Appropriate  
District Office  
State Lease - 4 copies  
Fee Lease - 3 copies

AMENDED REPORT

WELL LOCATION AND ACREAGE DEDICATION PLAT

|   |               |   |                            |                                |                        |                           |                       |                        |                  |
|---|---------------|---|----------------------------|--------------------------------|------------------------|---------------------------|-----------------------|------------------------|------------------|
| 1 API Number                                    |               | 2 Pool Code                                     |                            | 3 Pool Name<br>Pecos Slope Abo |                        |                           |                       |                        |                  |
| 4 Property Code                                 |               | 5 Property Name<br>WILLOW SPRING '27' STATE     |                            |                                |                        |                           |                       | 6 Well Number<br>1     |                  |
| 7 OGRID No.<br>149441                           |               | 8 Operator Name<br>RELIANCE ENERGY INCORPORATED |                            |                                |                        |                           |                       | 9 Elevation<br>3797'   |                  |
| 10 SURFACE LOCATION                             |               |   |                            |                                |                        |                           |                       |                        |                  |
| UL or lot no.<br>L                              | Section<br>27 | Township<br>4 SOUTH                             | Range<br>25 EAST, N.M.P.M. | Lot Ida                        | Feet from the<br>1980' | North/South line<br>SOUTH | Feet from the<br>660' | East/West line<br>WEST | County<br>CHAVES |
| "BOTTOM HOLE LOCATION IF DIFFERENT FROM SURFACE |               |   |                            |                                |                        |                           |                       |                        |                  |
| UL or lot no.                                   | Section       | Township  | Range                      | Lot Ida                        | Feet from the          | North/South line          | Feet from the         | East/West line         | County           |
| 12 Dedicated Acres<br>160.0                     |               | 13 Joint or Infill<br>N                         |                            | 14 Consolidation Code          |                        | 15 Order No.              |                       |                        |                  |

NO ALLOWABLE WELL BE ASSIGNED TO THIS COMPLETION UNTIL ALL INTERESTS HAVE BEEN  
CONSOLIDATED OR A NON-STANDARD UNIT HAS BEEN APPROVED BY THE DIVISION



OPERATOR CERTIFICATION

I hereby certify that the information  
contained herein is true and complete  
to the best of my knowledge and belief.

Signature

Clyde C. Wheeler

Printed Name

CLYDE C. WHEELER

Title

Petroleum Engineer

Date

6-5-00

SURVEYOR CERTIFICATION

I hereby certify that the well  
location shown on this plat was  
plotted from field notes of actual  
surveys made by me or under  
my supervision, and that the  
same is true and correct to the  
best of my belief.

Date of Survey

MAY 3, 2000

Signature and Seal of  
Professional Surveyor

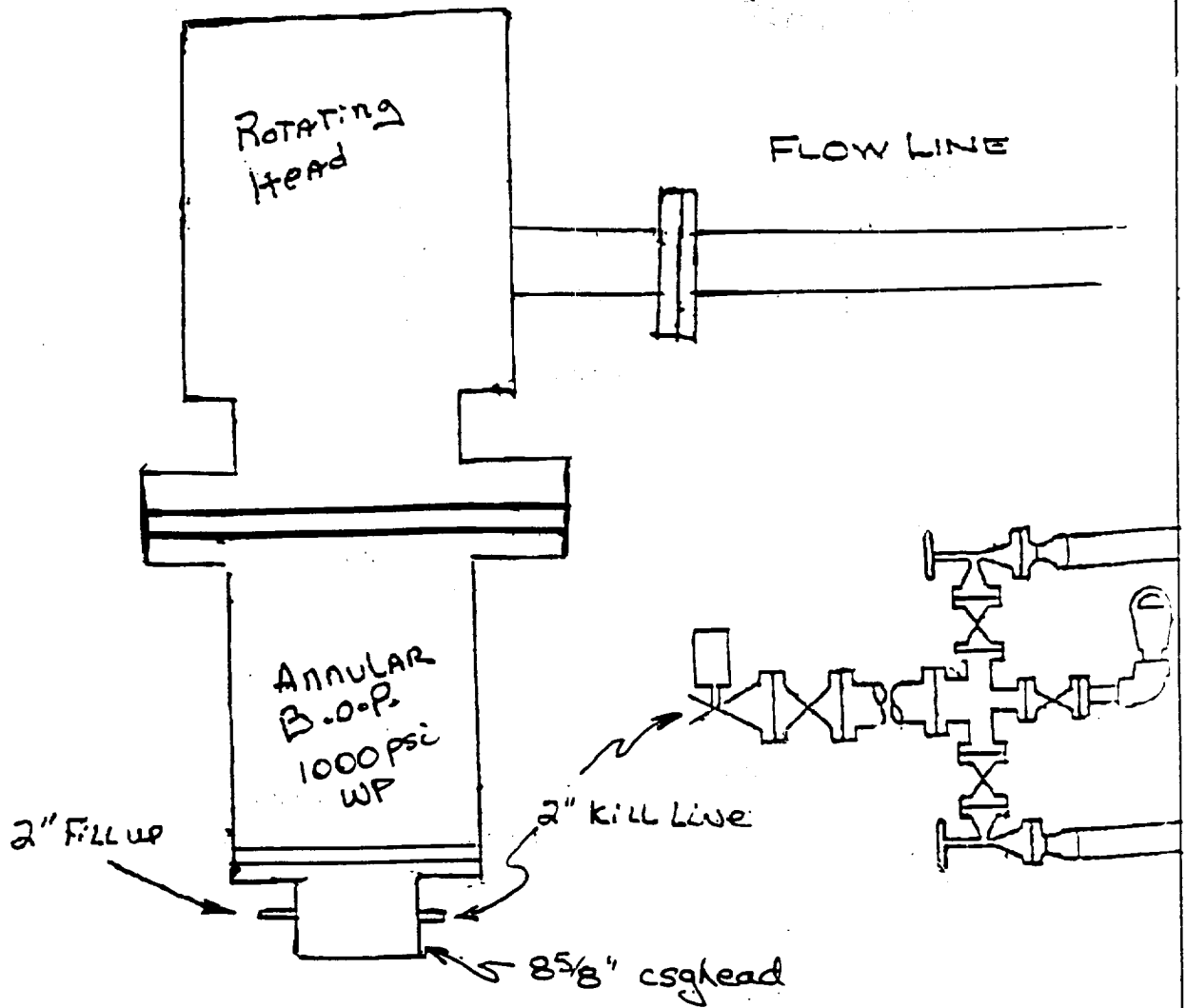
V. L. BEZNER 5-4-2000

Certificate No.

V. L. BEZNER

R.P.S. #7920

JOB #68949 / 200 NE / V.H.B.



Reliance Energy, Inc.  
Willow Spring "27" State No. 1  
Chaves County, NM.

CCW 5/15/00